

CRSP/COMPUSTAT MERGED DATABASE RELEASE NOTES

APRIL 2008 QUARTERLY UPDATE

INTRODUCTION

These release notes accompany the April 2008 monthly cut of the CRSP/Compustat Merged Database (CCM). The CCM files are updated monthly based on Compustat's final research cuts and shipped monthly, quarterly or annually. Files are delivered on a single compressed CD-ROM and installed using an InstallShield wizard. Please refer to our website for CRSPAccess Release Notes for full product information and for Documents and Guides for all CRSP products at:

<http://www.crsp.chicagogsb.edu/support/documentation>

UPDATE ON NEW CCM DATABASE DELIVERY

CRSP expects to deliver the new CCM database created from the Xpressfeed process by September 2008. Our annual and quarterly subscribers will receive a shipment of the CST annual-cut data in the new CCM format. Our monthly subscribers will receive a new CCM-format database that will be the same cut as the most recent CST-format database. Tools in CRSPSift and CRSPAccess will be shipped for users to access the new Xpressfeed data items in the CCM-format database.

CCM DATA CREATED FROM XPRESSFEED INPUTS

CRSP is now creating the CRSP/Compustat Merged database using new Xpressfeed inputs from Compustat. In this first phase of the transition, the format of the CCM databases is unchanged (CST) and it will continue to work with your existing tools.

ABOUT THE APRIL 2008

CRSP/COMPUSTAT MERGED DATABASE:

The Compustat cut date for this release is April 11, 2008. The database is shipped in its entirety with historical edits for restatements and corrections for each release.

The CD label for the CCM database is CPZ.

CPZ: CRSP Stock and Indices with Compustat data. PDE market data is for listed and research companies.

The database is delivered and supported on three platforms: Windows, Linux and Solaris. It has been tested on CRSPAccess 2.97 and is supported on CRSPAccess versions 2.91 and higher.

PARAMETERS:

- The number of CRSP Securities in the CPZ database is 23,823.
- The number of GVKEYs in the CPZ database is 33,231.
- The number of links in the CPZ database is 55,158.
- Database size is approximately 2.35 Gb.

CALENDARS

The CCM database utilizes the CRSP stock calendars to align properly with CRSP data. Data in the CRSP daily Stock (and Indices) file use daily and annual calendars.

Data in the monthly files use monthly, quarterly and annual calendars.

Calendar	Date Range	Date Index Range
Daily trading calendar	19251231-20080411	1-21842
Month-end trading calendar	19251231-20091231	1-1009
Year-end trading calendar	19251231-20091231	1-85
Quarter-end trading calendar	19251231-20091231	1-337
Weekly trading calendar	19260102-20080411	1-4293



CENTER FOR RESEARCH IN SECURITY PRICES

A Research Center at ChicagoGSB

DATA EDITS

APRIL 2008 DATA EDITS

GVKEY 107965 (QUATERRA RESOURCES INC)

OLD:

LINKDT	LINKENDDT	PERMNO	PERMCO	LINKTYPE	LINKFLAG
20051021	99999999	0	0	NR	XXX

NEW:

LINKDT	LINKENDDT	PERMNO	PERMCO	LINKTYPE	LINKFLAG
20051021	20080302	0	0	NR	XXX
20080303	99999999	92607	52980	LC	BBB

GVKEY 179066 (TREMISIS ENERGY ACQ CORP II)

OLD:

LINKDT	LINKENDDT	PERMNO	PERMCO	LINKTYPE	LINKFLAG
20071208	99999999	0	0	NR	XXX

NEW:

LINKDT	LINKENDDT	PERMNO	PERMCO	LINKTYPE	LINKFLAG
20071208	20080304	0	0	NR	XXX
20080305	99999999	92610	52906	LC	BBB

GVKEY 179305 (OVERTURE ACQUISITION CORP)

OLD:

LINKDT	LINKENDDT	PERMNO	PERMCO	LINKTYPE	LINKFLAG
20080209	99999999	0	0	NR	XXX

NEW:

LINKDT	LINKENDDT	PERMNO	PERMCO	LINKTYPE	LINKFLAG
20070419	20080302	0	0	NR	XXX
20080303	99999999	92613	52943	LC	BBB

GVKEY 16784 (COMMERCE BANCORP INC/NJ)

OLD:

LINKDT	LINKENDDT	PERMNO	PERMCO	LINKTYPE	LINKFLAG
19840101	19841017	0	0	NU	XXX
19841018	99999999	86845	7263	LU	BBB

NEW:

LINKDT	LINKENDDT	PERMNO	PERMCO	LINKTYPE	LINKFLAG
19840101	19841017	0	0	NR	XXX
19841018	20080328	86845	7263	LC	BBB

GVKEY 155735 (AMIS HOLDINGS INC)

OLD:

LINKDT	LINKENDDT	PERMNO	PERMCO	LINKTYPE	LINKFLAG
20000101	20030923	0	0	NR	XXX
20030924	99999999	89830	44377	LC	BBB

NEW:

LINKDT	LINKENDDT	PERMNO	PERMCO	LINKTYPE	LINKFLAG
20000101	20030923	0	0	NR	XXX
20030924	20080317	89830	44377	LC	BBB

GVKEY 14385 (RESPIRONICS INC)

OLD:

LINKDT	LINKENDDT	PERMNO	PERMCO	LINKTYPE	LINKFLAG
19870630	19880511	0	0	NU	XXX
19880512	99999999	11927	9777	LU	BBB

NEW:

LINKDT	LINKENDDT	PERMNO	PERMCO	LINKTYPE	LINKFLAG
19870630	19880511	0	0	NR	XXX
19880512	20080314	11927	9777	LC	BBB

GVKEY 30584 (A S V INC)

OLD:

LINKDT	LINKENDDT	PERMNO	PERMCO	LINKTYPE	LINKFLAG
19930101	19940810	0	0	NU	XXX
19940811	20080304	80798	13255	LU	BBB

NEW:

LINKDT	LINKENDDT	PERMNO	PERMCO	LINKTYPE	LINKFLAG
19930101	19940810	0	0	NR	XXX
19940811	20080303	80798	13255	LC	BBB

GVKEY 7991 (TEREX CORP)

OLD:

LINKDT	LINKENDDT	PERMNO	PERMCO	LINKTYPE	LINKFLAG
19620101	19731106	0	0	NU	XXX
19731107	99999999	58318	3302	LU	BBB

NEW:

LINKDT	LINKENDDT	PERMNO	PERMCO	LINKTYPE	LINKFLAG
19620101	19731106	0	0	NR	XXX
19731107	19820708	58318	3302	LC	BBB
19820709	19821031	0	0	NR	XXX
19821101	99999999	58318	3302	LC	BBB

GVKEY 20217 (QUEST RESOURCE CORP)

OLD:

LINKDT	LINKENDDT	PERMNO	PERMCO	LINKTYPE	LINKFLAG
19830601	19900116	0	0	NR	XXX
19900117	19900914	76456	10462	LU	BBB
19900915	20060410	0	0	NR	XXX
20060411	99999999	76465	10462	LC	BBB

NEW:

LINKDT	LINKENDDT	PERMNO	PERMCO	LINKTYPE	LINKFLAG
19830601	19900116	0	0	NR	XXX
19900117	19900916	76465	10462	LC	BBB
19900917	20060410	0	0	NR	XXX
20060411	99999999	76465	10462	LC	BBB

GVKEY 65350 (SOLUTIA INC)

OLD:

LINKDT	LINKENDDT	PERMNO	PERMCO	LINKTYPE	LINKFLAG
19920101	19970902	0	0	NR	XXX
19970903	20031216	85266	32063	LC	BBB
20031217	99999999	0	0	NR	XXX

NEW:

LINKDT	LINKENDDT	PERMNO	PERMCO	LINKTYPE	LINKFLAG
19920101	19970902	0	0	NR	XXX
19970903	20031216	85266	32063	LC	BBB
20031217	20080302	0	0	NR	XXX
20080303	99999999	92505	32063	LC	BBB

GVKEY 112473 (ADAMS GOLF INC)

OLD:

LINKDT	LINKENDDT	PERMNO	PERMCO	LINKTYPE	LINKFLAG
19980710	20070418	86237	16207	LU	BBB
20070419	99999999	0	0	NU	XXX

NEW:

LINKDT	LINKENDDT	PERMNO	PERMCO	LINKTYPE	LINKFLAG
19980710	20030521	86237	16207	LC	BBB
20030522	20080312	0	0	NR	XXX
20080313	99999999	86237	16207	LC	BBB

GVKEY 1440 (AMERICAN ELECTRIC POWER CO)

OLD:

LINKDT	LINKENDDT	PERMNO	PERMCO	LINKTYPE	LINKFLAG
19510101	99999999	24109	20077	LU	BBB

NEW:

LINKDT	LINKENDDT	PERMNO	PERMCO	LINKTYPE	LINKFLAG
19510101	99999999	24109	20077	LC	BBB

GVKEY 3640 (CUCOS INC)

OLD:

LINKDT	LINKENDDT	PERMNO	PERMCO	LINKTYPE	LINKFLAG
19820701	19831214	0	0	NU	XXX
19831215	19990202	27861	6709	LU	BBB
19990203	20040122	0	0	NU	XXX

NEW:

LINKDT	LINKENDDT	PERMNO	PERMCO	LINKTYPE	LINKFLAG
19820701	19831214	0	0	NR	XXX
19831215	19990202	27861	6709	LC	BBB
19990203	99999999	0	0	NR	XXX

GVKEY 5639 (HILL-ROM HOLDINGS INC)

OLD:

LINKDT	LINKENDDT	PERMNO	PERMCO	LINKTYPE	LINKFLAG
19701201	19710627	0	0	NU	XXX
19710628	99999999	52716	20913	LU	BBB

NEW:

LINKDT	LINKENDDT	PERMNO	PERMCO	LINKTYPE	LINKFLAG
19701201	19710627	0	0	NR	XXX
19710628	20080331	52716	20913	LC	BBB
20080401	99999999	92597	52975	LN	BBB

GVKEY 9724 (SILICON VALLEY RESEARCH INC)

OLD:

LINKDT	LINKENDDT	PERMNO	PERMCO	LINKTYPE	LINKFLAG
19830429	19840508	0	0	NU	XXX
19840509	19981116	70675	7018	LU	BBB
19981117	20040219	0	0	NU	XXX

NEW:

LINKDT	LINKENDDT	PERMNO	PERMCO	LINKTYPE	LINKFLAG
19830429	19840508	0	0	NR	XXX
19840509	19920405	70675	7018	LC	BBB
19920406	19950907	0	0	NR	XXX
19950908	20080411	70675	7018	LC	BBB
20080412	99999999	0	0	NR	XXX

GVKEY 23752 (PEOPLES BANCORP AUBURN IN)

OLD:

LINKDT	LINKENDDT	PERMNO	PERMCO	LINKTYPE	LINKFLAG
19861001	19870706	0	0	NU	XXX
19870707	99999999	11493	9325	LU	BBB

NEW:

LINKDT	LINKENDDT	PERMNO	PERMCO	LINKTYPE	LINKFLAG
19861001	19870706	0	0	NR	XXX
19870707	20080327	11493	9325	LC	BBB

GVKEY 28199 (ABSOLUTE ENTERTAINMENT INC)

OLD:

LINKDT	LINKENDDT	PERMNO	PERMCO	LINKTYPE	LINKFLAG
19880101	19930429	0	0	NU	XXX
19930430	19941026	79068	12110	LU	BBB
19941027	19950630	0	0	NU	XXX

NEW:

LINKDT	LINKENDDT	PERMNO	PERMCO	LINKTYPE	LINKFLAG
19880101	19930429	0	0	NR	XXX
19930430	19941026	79068	12110	LC	BBB
19941027	99999999	0	0	NR	XXX

GVKEY 9402 (MOVIE STAR INC)

OLD:

LINKDT	LINKENDDT	PERMNO	PERMCO	LINKTYPE	LINKFLAG
19670701	19690323	0	0	NR	XXX
19690324	20071231	48020	21563	LC	BBB
20080101	99999999	0	0	NR	XXX

NEW:

LINKDT	LINKENDDT	PERMNO	PERMCO	LINKTYPE	LINKFLAG
19670701	19690323	0	0	NR	XXX
19690324	20070128	48020	21563	LC	BBB

GVKEY 3865 (MOVIE STAR INC)

OLD:

LINKDT	LINKENDDT	PERMNO	PERMCO	LINKTYPE	LINKFLAG
19790101	19801125	0	0	NR	XXX
19801126	19840626	29357	1286	LC	BBB
19840627	99999999	0	0	NR	XXX

NEW:

LINKDT	LINKENDDT	PERMNO	PERMCO	LINKTYPE	LINKFLAG
19670701	19690323	0	0	NR	XXX
19690324	20080128	48020	21563	LC	BBB

GVKEY 23752 (PEOPLES BANCORP AUBURN IN)

OLD:

LINKDT	LINKENDDT	PERMNO	PERMCO	LINKTYPE	LINKFLAG
19861001	19870706	0	0	NU	XXX
19870707	99999999	11493	9325	LU	BBB

NEW:

LINKDT	LINKENDDT	PERMNO	PERMCO	LINKTYPE	LINKFLAG
19861001	19870706	0	0	NR	XXX
19870707	20080327	11493	9325	LC	BBB

MARCH 2008 DATA EDITS**GROUP EDITS**

Researched and edited GVKEYs with link type beginning with L* and link date on 20070419. Manually updated some of the automatically generated link types. Replaced link types with NR, LS, and LC in most cases.

INDIVIDUAL EDITS**GVKEY 11929 (ACURA PHARMACEUTICALS INC)**

OLD:

LINKDT	LINKENDDT	PERMNO	PERMCO	LINKTYPE	LINKFLAG
19850101	19860313	0	0	NU	XXX
19860314	20001026	10116	8028	LC	BBB
20001027	99999999	0	0	NR	XXX

NEW:

LINKDT	LINKENDDT	PERMNO	PERMCO	LINKTYPE	LINKFLAG
19850101	19860313	0	0	NR	XXX
19860314	20000906	10116	8028	LC	BBB
20000907	20080203	0	0	NR	XXX
20080204	99999999	10116	8028	LC	BBB

GVKEY 26523 (NYFIX INC)

OLD:

LINKDT	LINKENDDT	PERMNO	PERMCO	LINKTYPE	LINKFLAG
19920101	19930630	0	0	NU	XXX
19930701	20070418	79427	12249	LU	BBB
20070419	99999999	0	0	NU	XXX

NEW:

LINKDT	LINKENDDT	PERMNO	PERMCO	LINKTYPE	LINKFLAG
19920101	19930630	0	0	NR	XXX
19930701	20051031	79427	12249	LC	BBB
20051101	20080210	0	0	NR	XXX
20080211	99999999	79427	12249	LC	BBB

GVKEY 31456 (WESTERN SIZZLIN CORP)

OLD:

LINKDT	LINKENDDT	PERMNO	PERMCO	LINKTYPE	LINKFLAG
19940101	19950124	0	0	NU	XXX
19950125	19971118	81226	13527	LU	BBB
19971119	99999999	0	0	NU	XXX

NEW:

LINKDT	LINKENDDT	PERMNO	PERMCO	LINKTYPE	LINKFLAG
19940101	19950124	0	0	NR	XXX
19950125	19971118	81226	13527	LC	BBB
19971119	20080224	0	0	NR	XXX
20080225	99999999	81226	13527	LC	BBB

GVKEY 63605 (CALPINE CORP)

OLD:

LINKDT	LINKENDDT	PERMNO	PERMCO	LINKTYPE	LINKFLAG
19900101	19960919	0	0	NU	XXX
19960920	20070418	83981	31726	LU	BBB
20070419	20080111	0	0	NU	XXX
20080112	99999999	0	0	NR	XXX

NEW:

LINKDT	LINKENDDT	PERMNO	PERMCO	LINKTYPE	LINKFLAG
19900101	19960919	0	0	NR	XXX
19960920	20051205	83981	31726	LC	BBB
20051206	20080206	0	0	NR	XXX
20080207	99999999	92530	31726	LC	BBB

GVKEY 64423 (DELTEK INC)

OLD:

LINKDT	LINKENDDT	PERMNO	PERMCO	LINKTYPE	LINKFLAG
19960101	19970225	0	0	NU	XXX
19970226	20020620	84526	15357	LU	BBB
20020621	20070418	0	0	NU	XXX
20070419	20071031	0	0	NR	XXX
20071101	99999999	92446	52865	LC	BBB

NEW:

LINKDT	LINKENDDT	PERMNO	PERMCO	LINKTYPE	LINKFLAG
19960101	19970225	0	0	NR	XXX
19970226	20020531	84526	15357	LC	BBB
20020601	20071031	0	0	NR	XXX
20071101	99999999	92446	52865	LC	BBB

GVKEY 9689 (SIERRA HEALTH SERVICES)

OLD:

LINKDT	LINKENDDT	PERMNO	PERMCO	LINKTYPE	LINKFLAG
19840101	19850410	0	0	NU	XXX
19850411	99999999	67723	21614	LU	BBB

NEW:

LINKDT	LINKENDDT	PERMNO	PERMCO	LINKTYPE	LINKFLAG
19840101	19850410	0	0	NR	XXX
19850411	20080225	67723	21614	LC	BBB

GVKEY 31062 (ALABAMA NATL BANCORPORATION)

OLD:

LINKDT	LINKENDDT	PERMNO	PERMCO	LINKTYPE	LINKFLAG
19930101	19941121	0	0	NU	XXX
19941122	99999999	81071	13443	LU	BBB

NEW:

LINKDT	LINKENDDT	PERMNO	PERMCO	LINKTYPE	LINKFLAG
19930101	19941121	0	0	NR	XXX
19941122	20080222	81071	13443	LC	BBB

GVKEY 15633 (ROYAL BANK OF CANADA)

OLD:

LINKDT	LINKENDDT	PERMNO	PERMCO	LINKTYPE	LINKFLAG
20060925	20070418	0	0	NR	XXX
20070419	99999999	82654	29151	LU	BBB

NEW:

LINKDT	LINKENDDT	PERMNO	PERMCO	LINKTYPE	LINKFLAG
19951016	99999999	82654	29151	LC	BBB

GVKEY 24689 (BRADLEY PHARMACEUTICL -CL A)

OLD:

LINKDT	LINKENDDT	PERMNO	PERMCO	LINKTYPE	LINKFLAG
19900101	19911111	0	0	NU	XXX
19911112	99999999	77207	11198	LU	BBB

NEW:

LINKDT	LINKENDDT	PERMNO	PERMCO	LINKTYPE	LINKFLAG
19900101	19911111	0	0	NR	XXX
19911112	20080221	77207	11198	LC	BBB

GVKEY 6376 (KELLWOOD CO)

OLD:

LINKDT	LINKENDDT	PERMNO	PERMCO	LINKTYPE	LINKFLAG
19621101	19690101	0	0	NU	XXX
19690102	99999999	57437	21042	LU	BBB

NEW:

LINKDT	LINKENDDT	PERMNO	PERMCO	LINKTYPE	LINKFLAG
19621101	19690101	0	0	NR	XXX
19690102	20080219	57437	21042	LC	BBB

GVKEY 63385 (VENTANA MEDICAL SYSTEM INC)

OLD:

LINKDT	LINKENDDT	PERMNO	PERMCO	LINKTYPE	LINKFLAG
19950101	19960725	0	0	NU	XXX
19960726	99999999	83807	14851	LU	BBB

NEW:

LINKDT	LINKENDDT	PERMNO	PERMCO	LINKTYPE	LINKFLAG
19950101	19960725	0	0	NR	XXX
19960726	20080220	83807	14851	LC	BBB

GVKEY 126297 (IBASIS INC-OLD)

OLD:

LINKDT	LINKENDDT	PERMNO	PERMCO	LINKTYPE	LINKFLAG
19960101	19991109	0	0	NR	XXX
19991110	20021113	87392	17324	LC	BBB
20021114	20060620	0	0	NR	XXX
20060621	99999999	87392	17324	LC	BBB

NEW:

LINKDT	LINKENDDT	PERMNO	PERMCO	LINKTYPE	LINKFLAG
19960101	19991109	0	0	NR	XXX
19991110	20021113	87392	17324	LC	BBB
20021114	20060620	0	0	NR	XXX
20060621	20070928	87392	17324	LC	BBB

GVKEY 30012 (POINT THERAPEUTICS INC)

OLD:

LINKDT	LINKENDDT	PERMNO	PERMCO	LINKTYPE	LINKFLAG
19930101	19940406	0	0	NR	XXX
19940407	19980113	80452	12980	LC	BBB
19980114	20040401	0	0	NR	XXX
20040402	99999999	80452	12980	LC	BBB

NEW:

LINKDT	LINKENDDT	PERMNO	PERMCO	LINKTYPE	LINKFLAG
19930101	19940406	0	0	NR	XXX
19940407	19980113	80452	12980	LC	BBB
19980114	20040401	0	0	NR	XXX
20040402	20080212	80452	12980	LC	BBB

GVKEY 9402 (MOVIE STAR INC)

OLD:

LINKDT	LINKENDDT	PERMNO	PERMCO	LINKTYPE	LINKFLAG
19670701	19690323	0	0	NR	XXX
19690324	20080128	48020	21563	LC	BBB

NEW:

LINKDT	LINKENDDT	PERMNO	PERMCO	LINKTYPE	LINKFLAG
19670701	19690323	0	0	NR	XXX
19690324	20071231	48020	21563	LC	BBB
20080101	99999999	0	0	NR	XXX

GVKEY 15465 (HEALTHCARE TECHNOLOGIES LTD)

OLD:

LINKDT	LINKENDDT	PERMNO	PERMCO	LINKTYPE	LINKFLAG
19880129	19890215	0	0	NU	XXX
19890216	99999999	78698	26124	LU	BBB

NEW:

LINKDT	LINKENDDT	PERMNO	PERMCO	LINKTYPE	LINKFLAG
19880129	19890215	0	0	NR	XXX
19890216	20080221	78698	26124	LC	BBB

GROUP EDITS

Researched and edited gvkeys with LU and NU linktype end dates on 20070418 and LC and NR linktype begin dates on 20070419. For most cases, we changed LU and NU to LC and NR, respectively.

INDIVIDUAL EDITS

GVKEY 9402 (MOVIE STAR INC)

OLD:

LINKDT	LINKENDDT	PERMNO	PERMCO	LINKTYPE	LINKFLAG
19670701	19690323	0	0	NU	XXX
19690324	99999999	48020	21563	LU	BBB

NEW:

LINKDT	LINKENDDT	PERMNO	PERMCO	LINKTYPE	LINKFLAG
19670701	19690323	0	0	NR	XXX
19690324	20080128	48020	21563	LC	BBB

GVKEY 7504 (MGI PHARMA INC)

OLD:

LINKDT	LINKENDDT	PERMNO	PERMCO	LINKTYPE	LINKFLAG
19800701	19820610	0	0	NU	XXX
19820611	99999999	54798	5545	LU	BBB

NEW:

LINKDT	LINKENDDT	PERMNO	PERMCO	LINKTYPE	LINKFLAG
19800701	19820610	0	0	NR	XXX
19820611	20080128	54798	5545	LC	BBB

GVKEY 20423 (HARRAHS ENTERTAINMENT INC)

OLD:

LINKDT	LINKENDDT	PERMNO	PERMCO	LINKTYPE	LINKFLAG
19880101	19900225	0	0	NR	XXX
19900226	99999999	76090	26032	LC	BBB

NEW:

LINKDT	LINKENDDT	PERMNO	PERMCO	LINKTYPE	LINKFLAG
19880101	19900225	0	0	NR	XXX
19900226	20080125	76090	26032	LC	BBB

GVKEY 16843 (FIRST INDIANA CORP)

OLD:

LINKDT	LINKENDDT	PERMNO	PERMCO	LINKTYPE	LINKFLAG
19830101	19830801	0	0	NU	XXX
19830802	20080103	35829	6246	LU	BBB

NEW:

LINKDT	LINKENDDT	PERMNO	PERMCO	LINKTYPE	LINKFLAG
19830101	19830801	0	0	NR	XXX
19830802	20080102	35829	6246	LC	BBB

GVKEY 16769 (CHITTENDEN CORP)

OLD:

LINKDT	LINKENDDT	PERMNO	PERMCO	LINKTYPE	LINKFLAG
19820101	20080102	23326	991	LU	BBB

NEW:

LINKDT	LINKENDDT	PERMNO	PERMCO	LINKTYPE	LINKFLAG
19820101	20071231	23326	991	LC	BBB

GVKEY 16245 (PEOPLE'S UNITED FINL INC)

OLD:

LINKDT	LINKENDDT	PERMNO	PERMCO	LINKTYPE	LINKFLAG
19880101	19880705	0	0	NU	XXX
19880706	99999999	12073	9847	LU	BBB

NEW:

LINKDT	LINKENDDT	PERMNO	PERMCO	LINKTYPE	LINKFLAG
19880101	19880705	0	0	NR	XXX
19880706	99999999	12073	9847	LC	BBB

GVKEY 1712 (ARABIAN AMERICAN DEVELOPMENT)

OLD:

LINKDT	LINKENDDT	PERMNO	PERMCO	LINKTYPE	LINKFLAG
19760101	20070418	14761	352	LU	BBB
20070419	99999999	0	0	NU	XXX

NEW:

LINKDT	LINKENDDT	PERMNO	PERMCO	LINKTYPE	LINKFLAG
19760101	19830116	14761	352	LC	BBB
19830117	19830126	0	0	NR	XXX
19830127	20001011	14761	352	LC	BBB
20001012	20080128	0	0	NR	XXX
20080129	99999999	14761	352	LC	BBB

GVKEY 13407 (WELLMAN INC)

OLD:

LINKDT	LINKENDDT	PERMNO	PERMCO	LINKTYPE	LINKFLAG
19860101	19870602	0	0	NU	XXX
19870603	99999999	11384	9227	LU	BBB

NEW:

LINKDT	LINKENDDT	PERMNO	PERMCO	LINKTYPE	LINKFLAG
19860101	19870602	0	0	NR	XXX
19870603	20071207	11384	9227	LC	BBB
20071208	99999999	0	0	NR	XXX

GVKEY 64844 (MIDWAY GOLD CORP)

OLD:

LINKDT	LINKENDDT	PERMNO	PERMCO	LINKTYPE	LINKFLAG
20051223	99999999	0	0	NR	XXX

NEW:

LINKDT	LINKENDDT	PERMNO	PERMCO	LINKTYPE	LINKFLAG
20080103	99999999	92540	52932	LC	BBB

DATA INSTALLATION

Instructions and screen shots for installation are written for Windows. Differences related to Linux and Sun are noted.

WINDOWS:

To install data, insert your CD into the drive and from the Start Menu, select Run `d:\setupwin32.exe`. Click OK.

SUN SOLARIS:

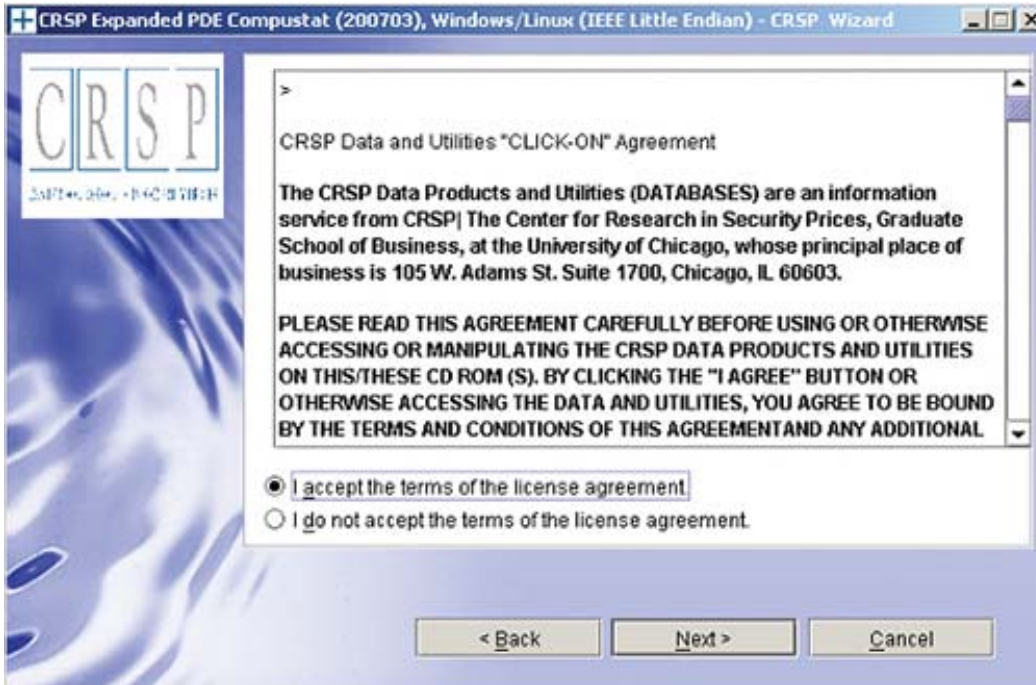
After inserting the CD, a terminal will open with the file, `setupsolaris.bin`. Double click on this setup file to begin the installation process.

LINUX:

Upon insertion of the CD, a terminal will open with the file, `setuplinux.bin`. Double click on this setup file and open a terminal to begin the installation process.



After you have clicked **Next** on the Welcome screen, scroll through and read the CRSP Data and Utilities Agreement. Click to accept the terms of the license agreement, and assuming you do, click **Next**.

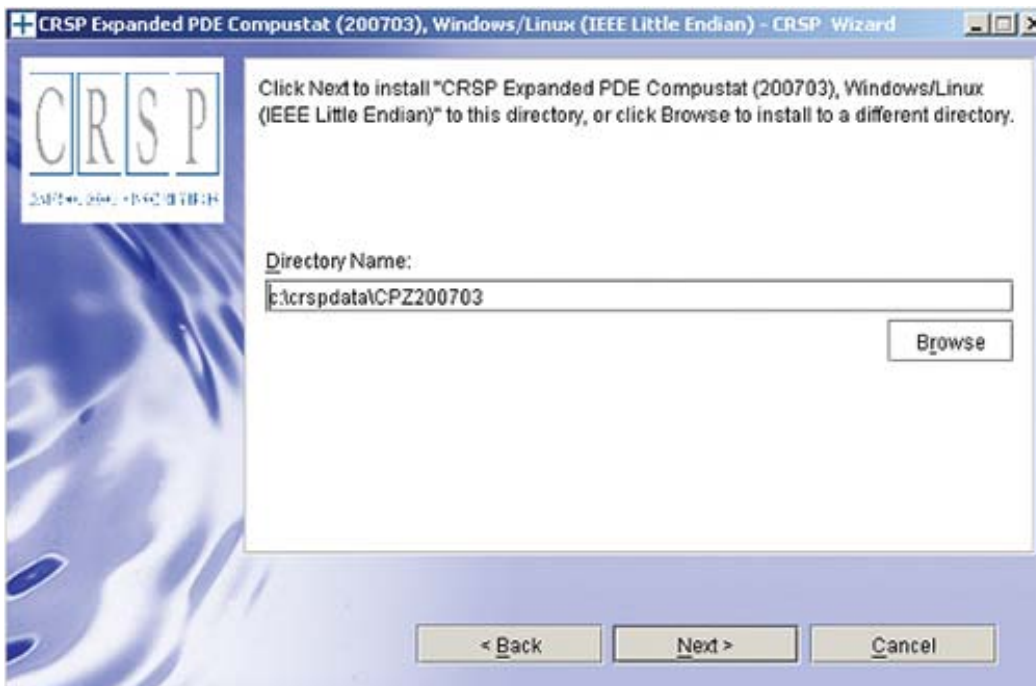


WINDOWS:

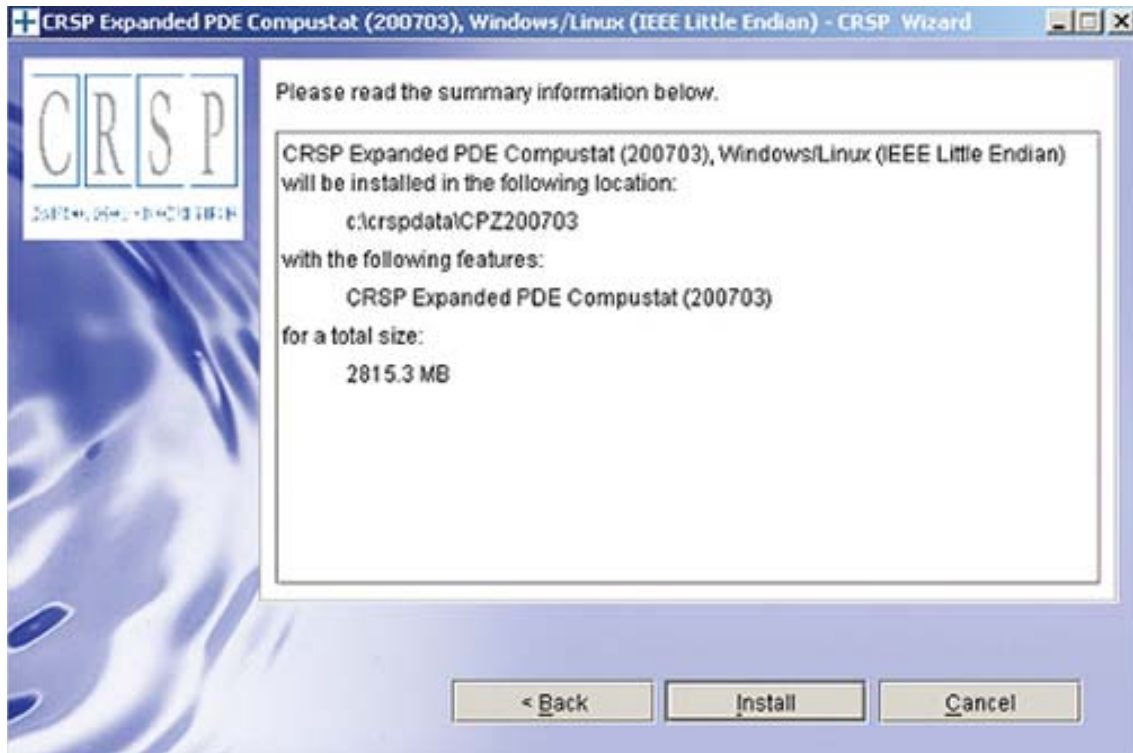
The default directory for the data installation is `c:\crspdata\cczyyyymm`. You may accept or modify it. Click **Next**. **Note:** InstallShield does not verify available space. Please see the database parameters on page 1 for space required for installation.

SUN SOLARIS & LINUX:

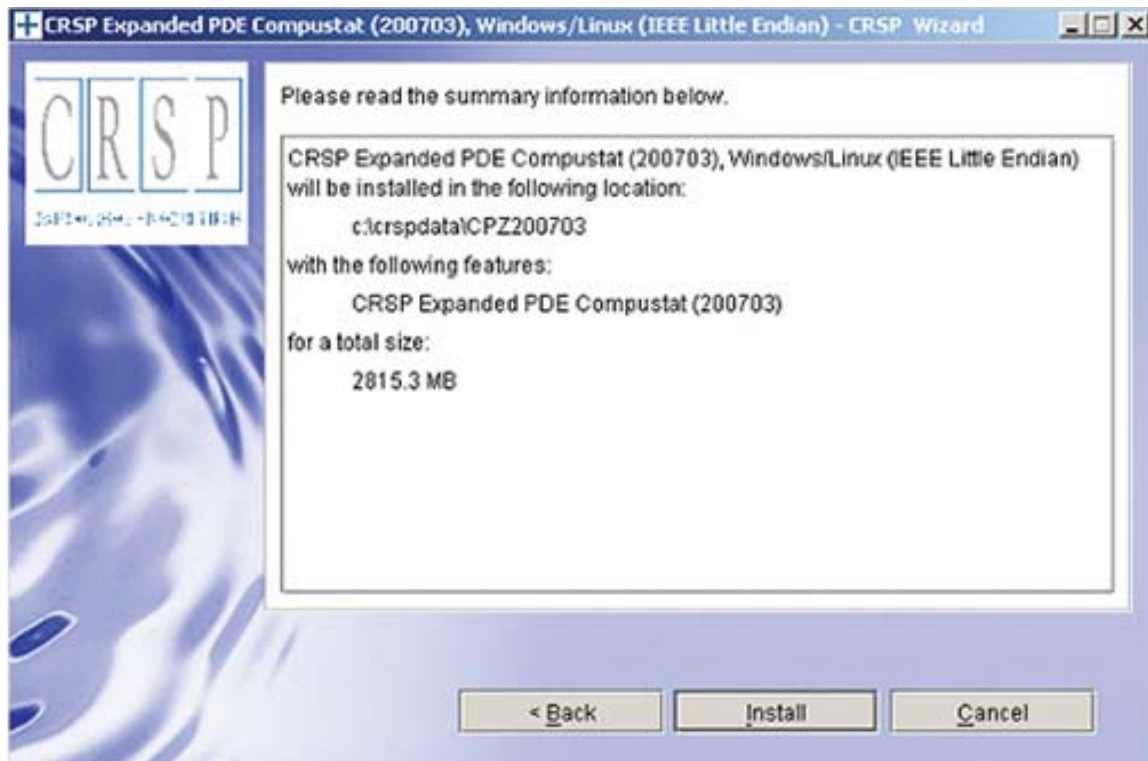
The default directory for the data installation is `/crspdata`. You must have write permission to the directory you specify, for example, `/home/username/crspdata`. **Note:** InstallShield does not verify available space. Please see the database parameters on page 1 for space required for installation.



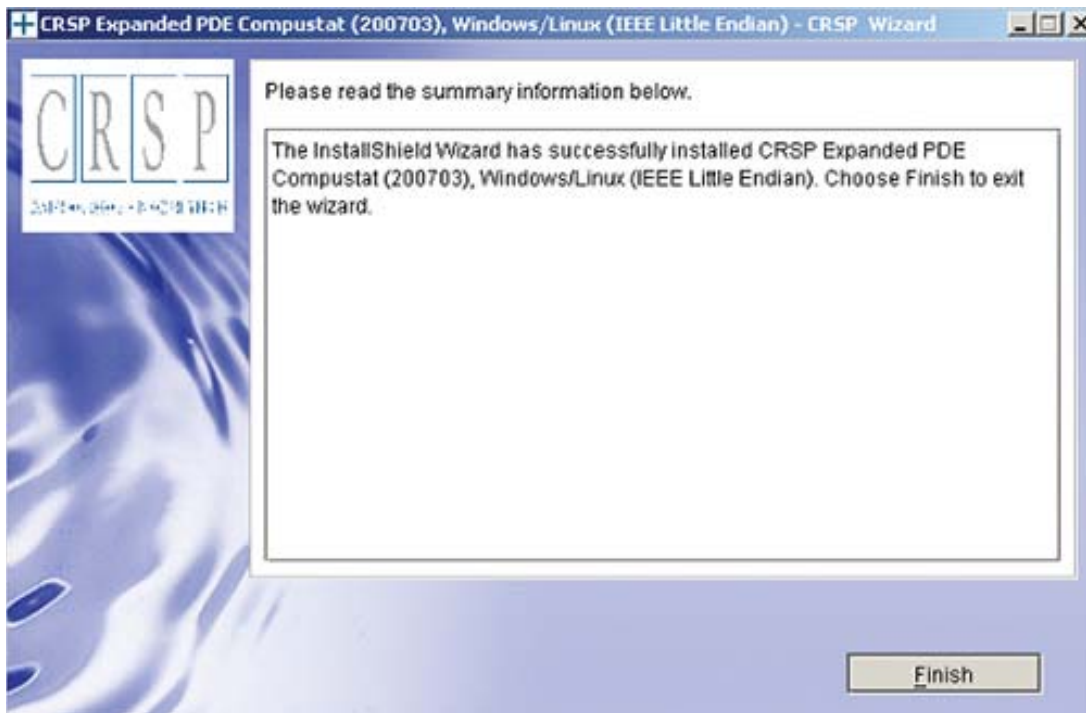
Summary information is displayed: Location, data components and the amount of space that is required for the data. Click on **Install** to proceed.



The screen will display the status of your installation.



A message indicating the success of the installation appears when the process is complete. Click **Finish**.



SUN SOLARIS & LINUX:

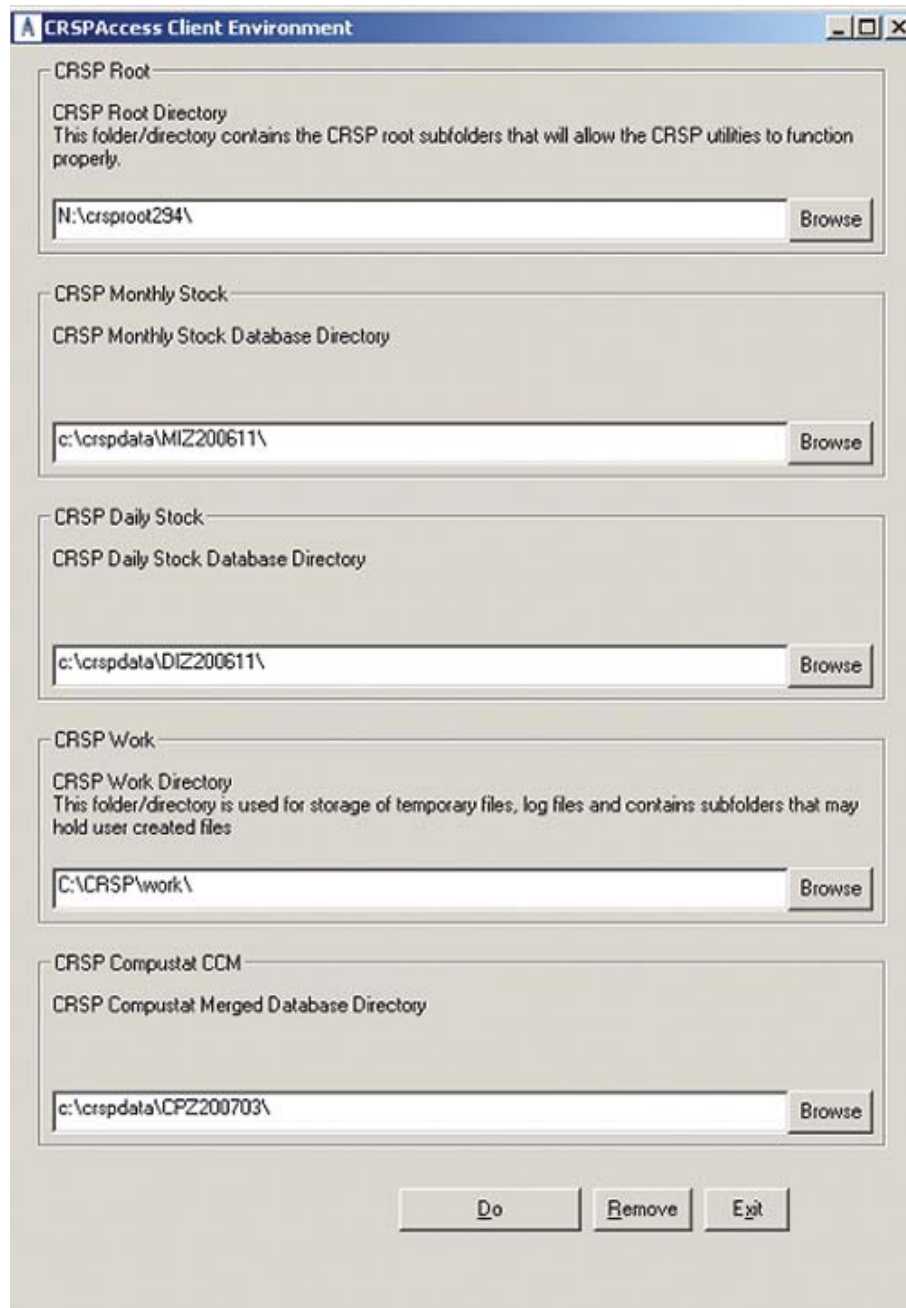
After clicking Finish, a file named `crsp.kshrc` must be run to set the local environment variable for the database. At the prompt, type:

```
>. ./crsp.kshrc <enter>
```

Note: If you are not using `ksh`, modifications will be necessary. Check with your Unix administrator.

WINDOWS:

Location of the software and data may be checked by opening **CRSP Client Environment** from the CRSPAccess menu. This new utility provides users a quick and simple way of both checking and switching environment variables if necessary. Where, in the past, users had to go through the Control Panel to manipulate the environment variables, this can now be done by quick editing of the Client Environment screen.

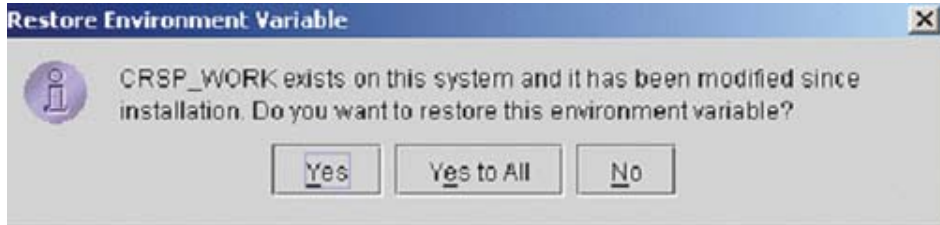


UNINSTALL

For each data install, an uninstall is created on the CRSPAccess menu. Data uninstalls do not touch software. Likewise, software uninstalls do not touch data. Each uninstall is done separately. As with the install, the uninstall is wizard-driven. When installation of either software or data is complete, users may be prompted with an option to either reboot the computer or wait until later.

Uninstall & CRSP Client Environment

Each time a path is modified in client environment, the action is recorded. Upon running `uninstall`, a *Restore Environment Variable* prompt will appear:



This prompt appears for each variable for each modification. Answer each prompt and continue cycling through. **Yes** is the default, which will restore environment variables back to what they were prior to the install.