

These release notes pertain to the April 2011 Monthly release of the CRSP US Stock and Index databases.

### APRIL 2011 DATA EDITS

PERMNO	COMPANY NAME	BEGIN DATE	END DATE	DESCRIPTION
84650	ASIA PACIFIC WIRE & CBLE CORP LT	20011231	20110428	Added zero nameline to reflect off-exchange activity for 20011231-20110428.
91376	ATLAS ENERGY L P			Changed sharecode from 72 to 71 for entire history.
87835	BROADBAND HOLDERS TRUST	20070212	20070212	Changed distribution code to 3753 from 3763 for stock distribution on ex-date 20070212
88872	EUROPE 2001 HOLDERS TR	20020610	20020610	Changed dividend amount to 0.0056 from 0.0168 for stock distribution on ex-date 20020610
88872	EUROPE 2001 HOLDERS TR	20020614	20020614	Changed distribution code to 3753 from 3888 and dividend amount to 0.2024 from 0.0000 for stock distribution on ex-date 20020614
89252	FIVE STAR QUALITY CARE INC	20011217	20020101	Changed exchange code to 32 from 2 for 20011217-20020101
16432	GOODYEAR TIRE & RUBBER CO			Changed name to GOODYEAR TIRE & RUBBER CO from GOODYEAR TIRE & RUBR CO throughout entire history
93208	GRAIL ADVISORS ETF TRUST	20100503	20110301	Changed distribution code to 1222 from 1223 for ex-dates 20100503, 20100601, 20100701, 20100802, 20100901, 20101001, 20101101, 20110201, and 20110301. Changed distribution code to 1262 from 1263 for ex-date 20101227.
92837	ISHARES TRUST	20110302	20110302	Changed distribution code to 1222 from 1232 for ex-date 20110302.
88488	MARKET 2000 HOLDERS TR	20051201	20051201	Changed distribution code to 3753 from 3763 for stock distribution on ex-date 20051201
85621	METTLER TOLEDO INTERNATIONAL INC			Changed sharecode from 12 to 11 for entire history.
54181	MILLIPORE CORP	20020228	20020228	Changed distribution code to 3753 from 3763 for stock distribution on ex-date 20020228
88929	NUVEEN CA DIVIDEND ADV MUNI FD 2			Changed name to NUVEEN CA DIVIDEND ADV MUNI FD 2 from NUVEEN CA DIVIDEND ADV MUN FD 2 throughout entire history
89163	NUVEEN CA DIVIDEND ADV MUNI FD 3			Changed name to NUVEEN CA DIVIDEND ADV MUNI FD 3 from NUVEEN CALIF DIV ADV MUN FD 3 throughout entire history
88930	NUVEEN NJ DIVIDEND ADV MUNI FD			Changed name to NUVEEN NJ DIVIDEND ADV MUNI FD from NUVEEN N J DIVIDEND ADV MUN FD throughout entire history
77205	ONCOTHYREON INC	20071211	20110331	Changed sharecode from 12 to 11 on 12/11/2007-present.
85524	RADIOLOGIX INC	20061116	20061116	Changed dividend amount to 2.70 from 2.80 for delisting stock distribution on ex-date 20061116
12717	SPDR SERIES TRUST			Added entire history (from non-subscriber PERMNO 93563)
93034	SPDR SERIES TRUST	20091229	20110301	Changed distribution code to 1223 from 1222 for ex-dates 20091102, 20091201, 20091229, 20100201, 20100301, 20100401, 20100503, 20100601, 20100701, 20100802, 20100901, 20101001, 20101101, 20101201, 20110201, and 20110301. Changed distribution code to 1263 from 1262 for ex-date 20101229.
84650	SYNGENTA A G	20001113	20001113	Changed exchange code to 31 from 1 on 20001113
88822	SYNGENTA A G			Changed name to SYNGENTA A G from SYNGENTA AG throughout entire history
88823	SYNGENTA AG			Removed entire history from subscriber database (and added it to non-subscriber PERMNO -88822)
88317	UTILITIES HOLDERS TRUST	20030724	20030724	Changed distribution code to 3753 from 3763 for stock distribution on ex-date 20030724
88827	WIRELESS HOLDERS TRUST	20051212	20051212	Changed distribution code to 3753 from 3763 for stock distribution on ex-date 20051212

## FILE VERSION SPECIFICS

This table contains version specific information for the CRSP Stock Files with data ending April 2011. It contains the number of securities and information about the maximums of the event arrays.

FILE CODE	# OF SECURITIES	MAX NAMES	MAX DIST	MAX SHARES	MAX DELISTS	MAX GROUPS	MAX NASDIN	FIRST PERMNO	LAST PERMNO
DAZ	28874	39	1304	998	1	4	2241	10000	93436
MAZ	28845	39	1304	998	1	4	2241	10000	93436

CALENDAR	DATE RANGE	DATE INDEX RANGE
Daily trading calendar	19251231-2011428	1-22611
Month-end trading calendar	19251231-2011428	1-1025
Year-end trading calendar	19251231-20121231	1-88
Quarter-end trading calendar	19251231-20121231	1-349
Weekly trading calendar	19260102-2011428	1-4452

## CRSPACCESS PRODUCT INFORMATION

To simplify installation for our subscribers, data are bundled into product groups. Information relevant to each product group is listed in the table below.

PRODUCT NAME	DATABASE	MEDIA	SIZE	INDEXES	PORTFOLIOS	COMPONENTS & DESCRIPTION
CRSP 1925 US Stock and Index Database	FIZyyyyymm	DVD	3.5 GB	All CRSP indexes and portfolio assignments	All portfolios	DI - 1925 Daily US Stock & Index Database MI - 1925 Monthly US Stock & Index Database IF - CRSP Supplemental US Indexes
CRSP 1925 US Stock	FAZyyyyymm	DVD	3.2 GB	CRSP NYSE/ AMEX/ NASDAQ Value-weighted Market, CRSP NYSE/ AMEX/ NASDAQ Equal-weighted Market, S&P 500 Composite, NASDAQ Composite	NYSE/ AMEX/ NASDAQ Capitalization Deciles	DA - 1925 Daily US Stock MA - 1925 Monthly US Stock IN - CRSP Limited US Indexes
CRSP 1962 US Stock	A6Zyyyyymm	DVD	2.8 GB	CRSP NYSE/ AMEX/ NASDAQ Value-weighted Market, CRSP NYSE/ AMEX/ NASDAQ Equal-weighted Market, S&P 500 Composite, NASDAQ Composite	NYSE/ AMEX/ NASDAQ Capitalization Deciles	D6 - 1962 Daily US Stock M6 - 1962 Monthly US Stock IN - CRSP Limited US Indexes
CRSP 1962 US Stock and Index Database	AXZyyyyymm	DVD	3.1 GB	See FIZ	All portfolios	DX - 1962 Daily US Stock & Index Database MX - 1962 Monthly US Stock & Index Database IF - CRSP Supplemental US Indexes
CRSP 1925 US Indexes	IFZyyyyymm	DVD	114 MB			IF - CRSP Supplemental US Indexes
CRSP/Compustat Merged Database	CMZyyyyymm	DVD	7.2 GB			CM - Compustat Data formatted in CRSPAccess Database
Daily & Monthly Treasuries in CRSPSift	TRZyyyyymm	DVD	147 MB			TR - Database format for use with CRSPSift
Daily & Monthly Treasuries Files	TFZyyyyymm	DVD	778 MB			TF - New expanded daily and monthly files in EXCEL, SAS, and ASCII formats

PRODUCT NAME	DATABASE	MEDIA	SIZE	INDEXES	PORTFOLIOS	COMPONENTS & DESCRIPTION
Daily & Monthly Legacy Treasuries Files	TLZyymm	DVD	1.09 GB			TL - Legacy daily and monthly files in EXCEL, SAS, and ASCII formats
Mutual Fund Database	MFZyyyyymm	DVD	4.9 GB			MF - Mutual Funds
CRSP/Ziman Daily & Monthly REIT	RAZyyyyymm	DVD	164 MB			RD - Daily REITs RM - Monthly REITs
CRSP/Ziman Monthly REIT	RMZyyyyymm	DVD	8 MB			RM - Monthly REITs

## DATA INSTALLATION

Instructions and screen shots for installation are written for Windows. Differences related to Linux and Sun or media are noted.

### WINDOWS:

To install data, insert your DVD into the drive and from the Start Menu, select Run d:\setupwin32.exe. Click OK.

### SUN SOLARIS (DVD INSTALL):

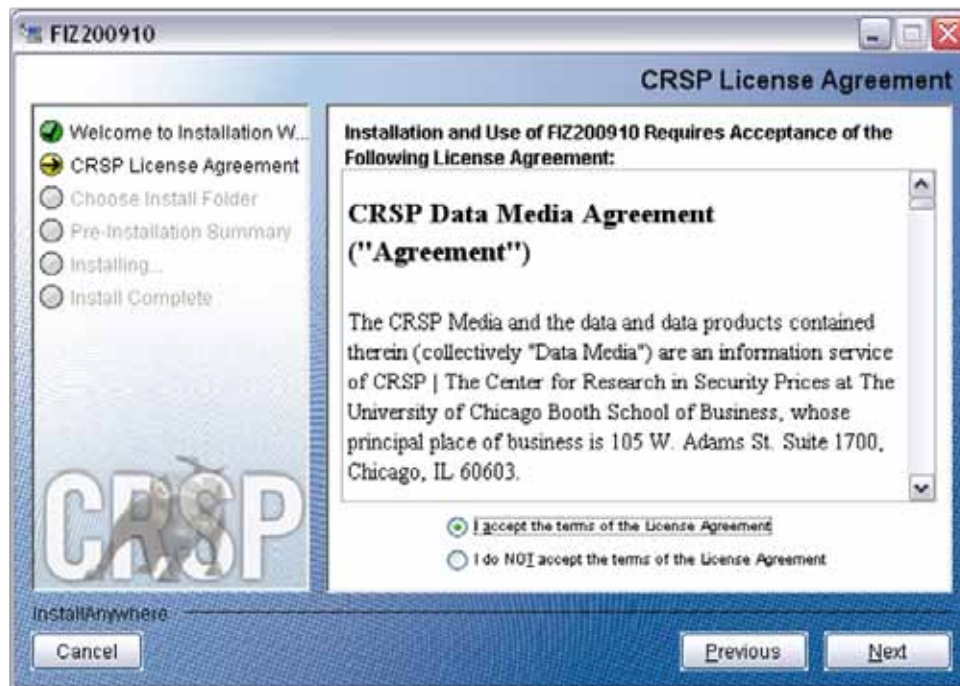
After inserting the DVD, a file manager will open with the file, `setupsolaris.bin`. Double click on this setup file to begin the installation process.

### LINUX(DVD INSTALL):

Upon insertion of the DVD, a file manager will open with the file, `setuplinux.bin`. Double click on this setup file to begin the installation process.



After clicking on **Next** on the Welcome screen, scroll through and read the CRSP Data and Utilities Agreement. Click to accept the terms of the license agreement. Click **Next**.



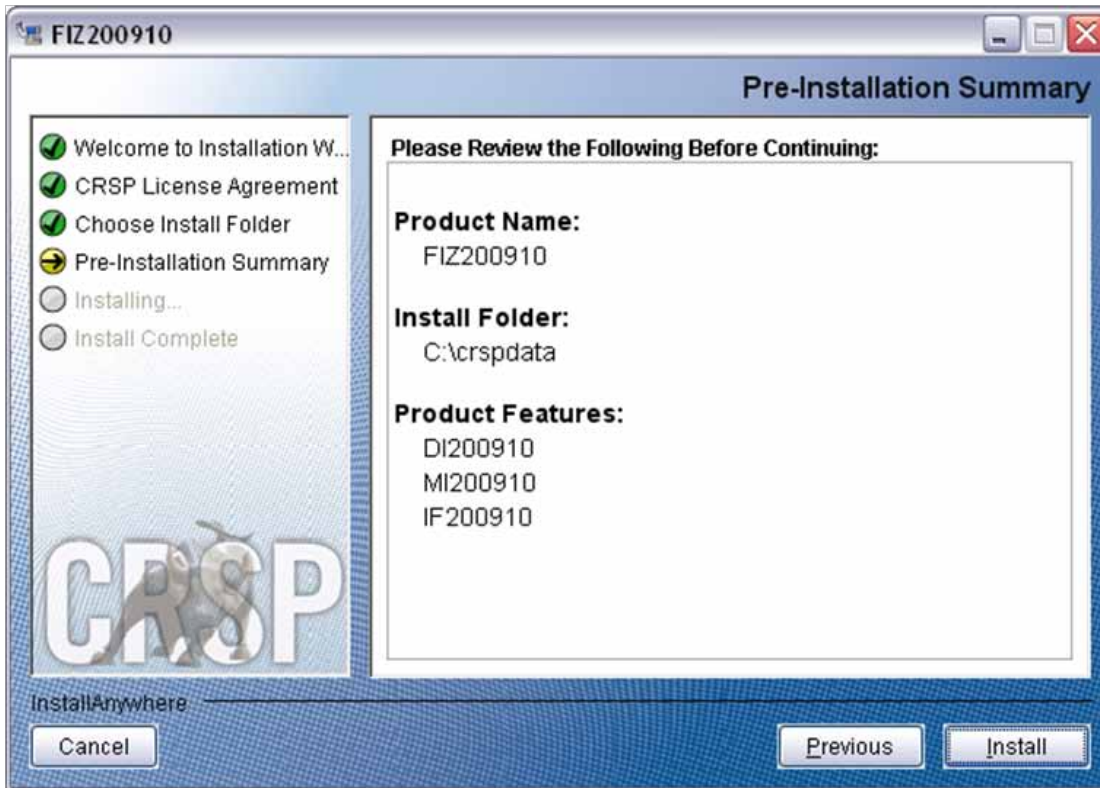
**WINDOWS:** The default directory for the data installation is `c:\crspdata`. You may accept or modify it. Click **Next**.

**SUN SOLARIS & LINUX:** The default directory for the data installation is `/crspdata`. You must have write permission to the directory you specify, for example, `/home/username/crspdata`.

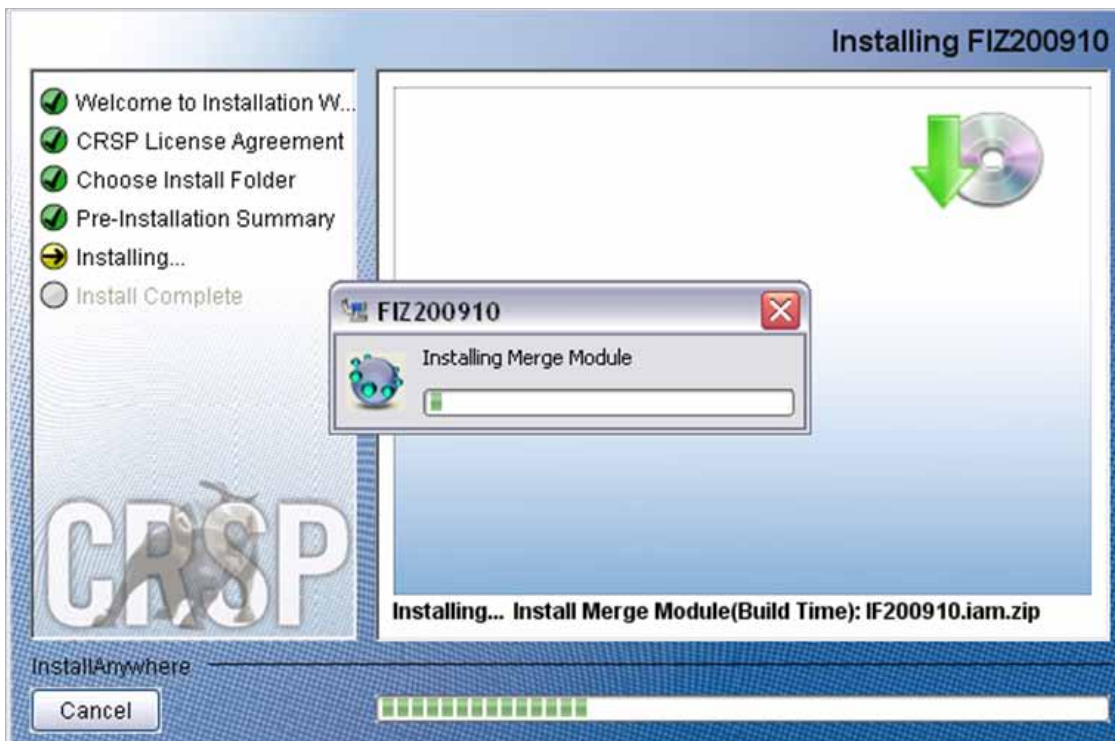




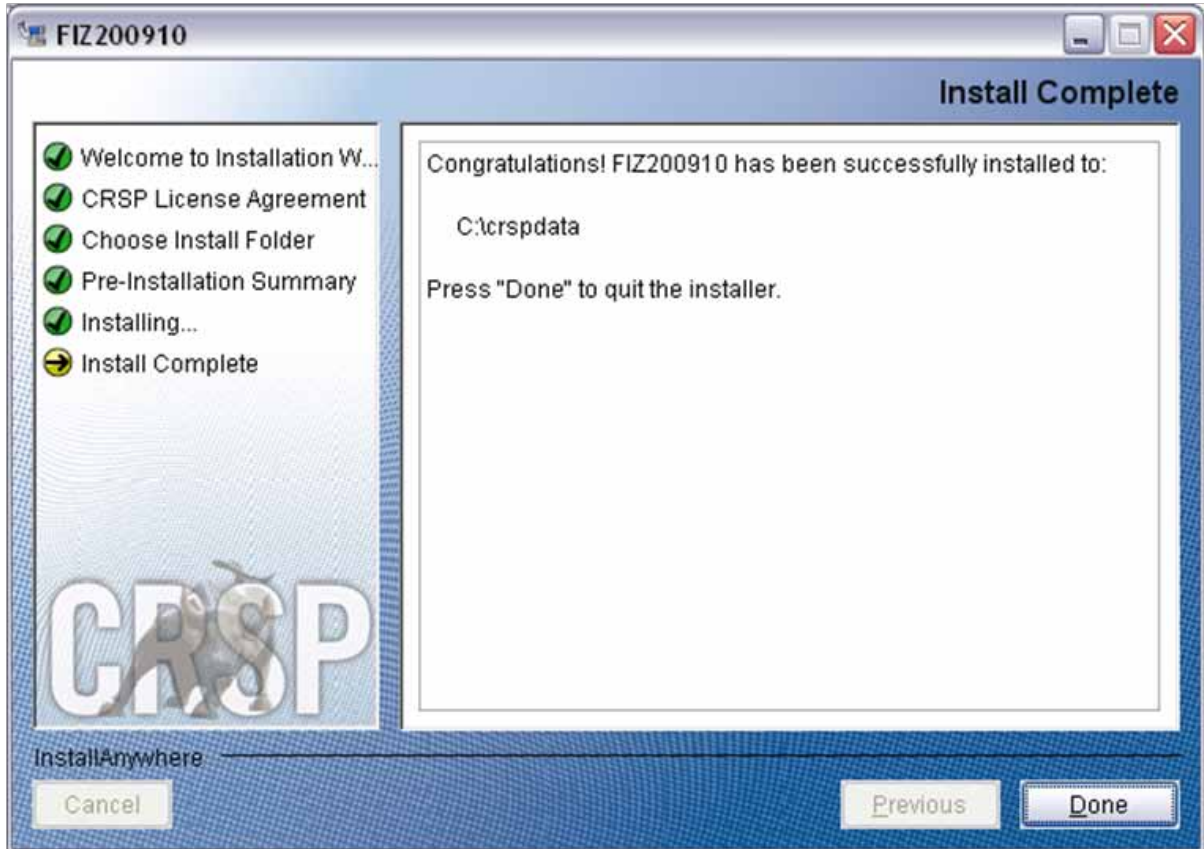
Summary information is displayed: Location, data components and the amount of space that is required for the data. Click on **Install** to proceed.



The screen will display the status of the installation.



A message indicating the success of the installation appears when the process is complete. Click **Done**.



## LINUX AND SUN SOLARIS ENVIRONMENT VARIABLES

### Important Change for Sun Solaris & Linux Installations:

Following previous installs, the `crsp.kshrc` file was run upon completion to set both environment variables and software alias values. This new version of InstallAnywhere sets the environment variables directly on the system when the software is installed. The `crsp.kshrc` file must still be run to set the aliases.

A user may wish to revert back to a previous cut of data or a previous version of the software. In order to do so, CRSP provides shell scripts for users to run that will create a custom-named `kshrc` file that the user may run to set environment variables at the session level. This process also provides a way for a system administrator to create a script that can be put into the system login process so that the environment variables are seen by all users.

To use a shell script for generating an initialization script file, follow these steps:

1. `cd` to the root directory where program files have been loaded.

```
cd accbin
```

2. If you are running `csh` shell, enter

```
source crsp_setup.csh
```

If you are running `ksh` or `bash` shell, enter

```
./ crsp_setup.sh
```

- 3. The script will prompt for data, root, and log directories. Follow the instructions on the prompts in terms of trailing slashes in directory names.

The script will create new scripts, `mycrsp.cshrc` in `csh` or `mycrsp.kshrc` in `ksh`. `mycrsp` is the default that may be changed.

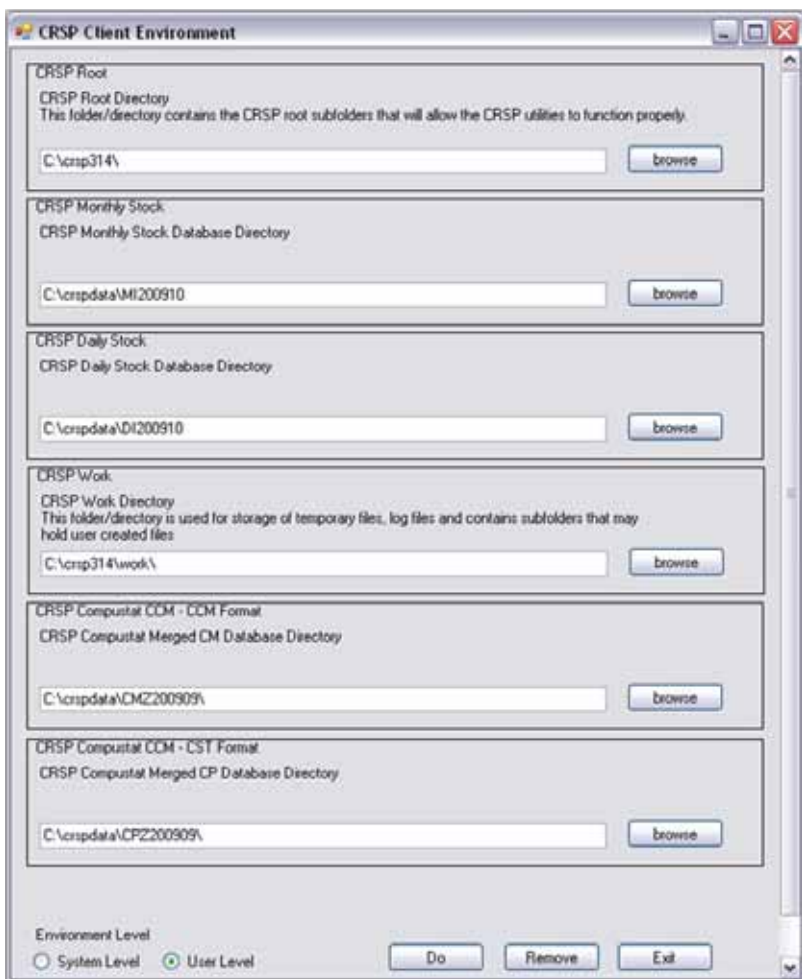
Note: When creating a custom `kshrc` file, be aware that it will overwrite a like-named file if one exists rather than create a new version. The `kshrc` file will overwrite all environment variables, so must be completely filled in.

`env | grep CRSP` can be used to check the CRSP environment variables set.

### WINDOWS:

Location of the software and data may be checked by opening CRSP Client Environment from the CRSPAccess menu. This new utility provides users a quick and simple way of both checking and switching environment variables if necessary. Where, in the past, users had to go through the Control Panel to manipulate the environment variables, this can now be done by quick editing of the Client Environment screen.

Note: For subscribers of the CRSP Compustat Merged database, additional CCM database environments will be displayed for the location of the Compustat data.



## UNINSTALL

To uninstall the data, go through Start > Control Panel > Add or Remove Programs. The data will appear in the Add or Remove Programs list as the volume label and cut date of the database. For example, the October cut of the 1925 US Stock and Index Database will be displayed as FIZ200910. Highlight your selection, click on the Change/Remove button and follow the prompts.