

CRSP/COMPUSTAT MERGED DATABASE RELEASE NOTES

AUGUST 2008 MONTHLY UPDATE

INTRODUCTION

These release notes accompany the August 2008 monthly cut of the CRSP/Compustat Merged Database (CCM). The CCM files are updated monthly based on Compustat's final research cuts and shipped monthly, quarterly or annually. Files are delivered on a single compressed CD-ROM and installed using an InstallShield wizard. Please refer to our website for CRSPAccess Release Notes for full product information and for Documents and Guides for all CRSP products at:

<http://www.crsp.chicagogsb.edu/support/documentation>

NEW CCM DATABASE TO SHIP IN NOVEMBER

In November, CRSP will ship the CRSP/Compustat database in the new CCM format that contains many additional items available through Compustat's Xpressfeed format. Quarterly and monthly subscribers will get two cuts of the October 2008 cut database, one in the old CST format and a second in the new CCM format. CRSPSift for Windows and CRSPAccess versions will also be shipped that will include new utilities to support the new CCM database.

UPCOMING BANK FILE CHANGE

October's shipment will hold the last of the data from the FTP Compustat Bank Files. Bank data are now a part of the Xpressfeed delivery and will be included in the new CCM database that will begin shipping in November. After the October shipment, the bank data in the CST format database will be frozen. Subscribers should expect to access the new CCM database for the most current bank files. Please feel free to contact CRSP Support if there are lingering concerns.

ABOUT THE AUGUST 2008

CRSP/COMPUSTAT MERGED DATABASE:

The Compustat cut date for this release is August 9, 2008. The database is shipped in its entirety with historical edits for restatements and corrections for each release.

The CD label for the CCM database is CPZ.

CPZ: CRSP Stock and Indices with Compustat data. PDE market data is for listed and research companies.

The database is delivered and supported on three platforms: Windows, Linux and Solaris. It has been tested on CRSPAccess 2.97 and is supported on CRSPAccess versions 2.91 and higher.

PARAMETERS:

- The number of CRSP Securities in the CPZ database is 23,945.
- The number of GVKEYs in the CPZ database is 33,478.
- The number of links in the CPZ database is 55,476.
- Database size is approximately 2.40 Gb.

CALENDARS

The CCM database utilizes the CRSP stock calendars to align properly with CRSP data. Data in the CRSP daily Stock (and Indices) file use daily and annual calendars.

Data in the monthly files use monthly, quarterly and annual calendars.

Calendar	Date Range	Date Index Range
Daily trading calendar	19251231-20080808	1-21925
Month-end trading calendar	19251231-20121231	1-1045
Year-end trading calendar	19251231-20091231	1-85
Quarter-end trading calendar	19251231-20091231	1-337
Weekly trading calendar	19260102-20080808	1-4310



CENTER FOR RESEARCH IN SECURITY PRICES

A Research Center at ChicagoGSB

DATA EDITS

A small number of GVKEYs were inadvertently missing from the Compustat Xpressfeed files used to create this September cut of the CRSP\Compustat Merged Database. These GVKEYs will be present again in the full history production of the database that will be cut in September and shipped in early October. The following GVKEYs are missing:

005417	Hudson United Bancorp
001458	American Fletcher Corp
001524	American National Corp - Delaware
001556	American Security Corp
001842	Atlantic Bancorporation
001998	Bank One Corp
001999	Bancal Tri-State Corp
002003	BancOhio Corp
002004	BancOklahoma Corp
002014	BankBoston Corp
002017	Bank of New England Corp
002021	Bank South Corp
004764	FleetBoston Financial Corp
004796	Florida National Banks of Florida
005324	Greater Jersey Bancorp
005591	Heritage Bancorporation
005619	Hibernia Corp – Class A
005702	Horizon Bancorp
011856	BB&T Corp
015582	Bank of Nova Scotia
114737	Citigroup Inc – Pro Forma
136204	Polyone Corp – Pro Forma
136224	Intl Paper Co – Pro Forma
137190	Devon Energy Corp – Pro Forma
137450	WPP Corp PLC – Pro Forma
141296	FleetBoston Financial – Pro Forma
141297	Microchip Tech – Pro Forma
160213	GSI Technology Inc
165075	Stealthgas Inc

GVKEY 4839 (FORD MOTOR CO)

OLD:

LINKDT	LINKENDDT	PERMNO	PERMCO	LINKTYPE	LINKFLAG
19500101	19560328	0	0	NR	XXX
19560329	20000802	25785	20750	LC	BBB
20000803	20000808	0	0	NR	XXX
20000809	99999999	88394	20750	LC	BBB

NEW:

LINKDT	LINKENDDT	PERMNO	PERMCO	LINKTYPE	LINKFLAG
19500101	19560306	0	0	NR	XXX
19560307	99999999	25785	20750	LC	BBB

GVKEY 3105 (CLEAR CHANNEL COMMUNICATIONS)

OLD:

LINKDT	LINKENDDT	PERMNO	PERMCO	LINKTYPE	LINKFLAG
19830101	19840418	0	0	NU	XXX
19840419	99999999	24046	6996	LU	BBB

NEW:

LINKDT	LINKENDDT	PERMNO	PERMCO	LINKTYPE	LINKFLAG
19830101	19840418	0	0	NR	XXX
19840419	20080730	24046	6996	LC	BBB

GVKEY 11056 (AQUILA INC)

OLD:

LINKDT	LINKENDDT	PERMNO	PERMCO	LINKTYPE	LINKFLAG
19580930	99999999	26606	21848	LU	BBB

NEW:

LINKDT	LINKENDDT	PERMNO	PERMCO	LINKTYPE	LINKFLAG
19620131	20080714	26606	21848	LC	BBB

GVKEY 6334 (GREAT PLAINS ENERGY INC)

OLD:

LINKDT	LINKENDDT	PERMNO	PERMCO	LINKTYPE	LINKFLAG
19510101	99999999	24432	21032	LU	BBB

NEW:

LINKDT	LINKENDDT	PERMNO	PERMCO	LINKTYPE	LINKFLAG
19620131	99999999	24432	21032	LC	BBB

GVKEY 1111 (ACTIVISION INC)

OLD:

LINKDT	LINKENDDT	PERMNO	PERMCO	LINKTYPE	LINKFLAG
19820129	19830608	0	0	NU	XXX
19830609	19910328	10701	6060	LU	BBB
19910329	19931021	0	0	NU	XXX
19931022	20080710	79678	12499	LU	BBB

NEW:

LINKDT	LINKENDDT	PERMNO	PERMCO	LINKTYPE	LINKFLAG
19820129	19830608	0	0	NR	XXX
19830609	19910328	10701	6060	LC	BBB
19910329	19931021	0	0	NR	XXX
19931022	20080710	79678	12499	LC	BBB

GVKEY 180405 (ACTIVISION BLIZZARD INC)

OLD:

LINKDT	LINKENDDT	PERMNO	PERMCO	LINKTYPE	LINKFLAG
20080712	99999999	0	0	NR	XXX

NEW:

LINKDT	LINKENDDT	PERMNO	PERMCO	LINKTYPE	LINKFLAG
20080710	99999999	79678	12499	LC	BBB

GVKEY 63196 (GETTY IMAGES INC)

OLD:

LINKDT	LINKENDDT	PERMNO	PERMCO	LINKTYPE	LINKFLAG
19950101	19960701	0	0	NR	XXX
19960702	19980210	83757	14790	LC	BBB
19980211	20080703	85824	15963	LC	BBB

NEW:

LINKDT	LINKENDDT	PERMNO	PERMCO	LINKTYPE	LINKFLAG
19950101	19960701	0	0	NR	XXX
19960702	19980210	83757	14790	LC	BBB
19980211	20080702	85824	15963	LC	BBB

GVKEY 180272 (LENDER PROCESSING SERVICES)

OLD:

LINKDT	LINKENDDT	PERMNO	PERMCO	LINKTYPE	LINKFLAG
20080712	99999999	0	0	NR	XXX

NEW:

LINKDT	LINKENDDT	PERMNO	PERMCO	LINKTYPE	LINKFLAG
20080630	20080702	0	0	NR	XXX
20080703	99999999	92697	53037	LC	BBB

GVKEY 64323 (SCPIE HOLDINGS INC)

OLD:

LINKDT	LINKENDDT	PERMNO	PERMCO	LINKTYPE	LINKFLAG
19910101	19970129	0	0	NU	XXX
19970130	20080701	84395	31904	LU	BBB

NEW:

LINKDT	LINKENDDT	PERMNO	PERMCO	LINKTYPE	LINKFLAG
19910101	19970129	0	0	NR	XXX
19970130	20080630	84395	31904	LC	BBB

GVKEY 3555 (COUNTRYWIDE FINANCIAL CORP)

OLD:

LINKDT	LINKENDDT	PERMNO	PERMCO	LINKTYPE	LINKFLAG
19740301	19750130	0	0	NU	XXX
19750131	20080701	64565	796	LU	BBB

NEW:

LINKDT	LINKENDDT	PERMNO	PERMCO	LINKTYPE	LINKFLAG
19740301	19790329	0	0	NR	XXX
19790330	20080630	64565	796	LC	BBB

GVKEY 7647 (BANK OF AMERICA CORP)

OLD:

LINKDT	LINKENDDT	PERMNO	PERMCO	LINKTYPE	LINKFLAG
19580101	19721213	0	0	NR	XXX
19721214	99999999	59408	3151	LC	BBB

NEW:

LINKDT	LINKENDDT	PERMNO	PERMCO	LINKTYPE	LINKFLAG
19580101	19721228	0	0	NR	XXX
19721229	99999999	59408	3151	LC	BBB

GVKEY 14285 (BENTLEY PHARMACEUTICALS)

OLD:

LINKDT	LINKENDDT	PERMNO	PERMCO	LINKTYPE	LINKFLAG
19860701	19880201	0	0	NU	XXX
19880202	99999999	10574	9674	LU	BBB

NEW:

LINKDT	LINKENDDT	PERMNO	PERMCO	LINKTYPE	LINKFLAG
19860701	19880201	0	0	NR	XXX
19880202	20080722	10574	9674	LC	BBB

GVKEY 25216 (MEDQUIST INC)

OLD:

LINKDT	LINKENDDT	PERMNO	PERMCO	LINKTYPE	LINKFLAG
19910101	19920504	0	0	NU	XXX
19920505	20070418	77575	11501	LU	BBB
20070419	99999999	0	0	NU	XXX

NEW:

LINKDT	LINKENDDT	PERMNO	PERMCO	LINKTYPE	LINKFLAG
19910101	19920504	0	0	NR	XXX
19920505	20040615	77575	11501	LC	BBB
20040616	20080716	0	0	NR	XXX
20080717	99999999	77575	11501	LC	BBB

GVKEY 4364 (CENTRUM INDUSTRIES INC)

OLD:

LINKDT	LINKENDDT	PERMNO	PERMCO	LINKTYPE	LINKFLAG
19800401	19810331	0	0	NU	XXX
19810401	19920723	32716	3980	LU	BBB
19920724	20020221	0	0	NU	XXX

NEW:

LINKDT	LINKENDDT	PERMNO	PERMCO	LINKTYPE	LINKFLAG
19800401	19810331	0	0	NR	XXX
19810401	19920723	32716	3980	LC	BBB
19920724	99999999	0	0	NR	XXX

GVKEY 8438 (PENN PACIFIC CORP)

OLD:

LINKDT	LINKENDDT	PERMNO	PERMCO	LINKTYPE	LINKFLAG
19781001	19910121	61947	3644	LU	BBB
19910122	19951231	0	0	NU	XXX

NEW:

LINKDT	LINKENDDT	PERMNO	PERMCO	LINKTYPE	LINKFLAG
19781031	19860402	61947	3644	LC	BBB
19860403	19861112	0	0	NR	XXX
19861113	19910121	61947	3644	LC	BBB
19910122	99999999	0	0	NR	XXX

GVKEY 13531 (HANCOCK FABRICS INC)

OLD:

LINKDT	LINKENDDT	PERMNO	PERMCO	LINKTYPE	LINKFLAG
19860201	19870521	0	0	NU	XXX
19870522	99999999	75066	20872	LU	BBB

NEW:

LINKDT	LINKENDDT	PERMNO	PERMCO	LINKTYPE	LINKFLAG
19860201	19870521	0	0	NR	XXX
19870522	20070321	75066	20872	LC	BBB
20070322	20080808	0	0	NR	XXX

GVKEY 16436 (CABLE & WIRELESS PLC)

OLD:

LINKDT	LINKENDDT	PERMNO	PERMCO	LINKTYPE	LINKFLAG
19880401	19890926	0	0	NU	XXX
19890927	20060518	75807	22103	LU	BBB

NEW:

LINKDT	LINKENDDT	PERMNO	PERMCO	LINKTYPE	LINKFLAG
19880401	19890926	0	0	NR	XXX
19890927	20051213	75807	22103	LC	BBB
20051214	99999999	0	0	NR	XXX

GVKEY 19387 (SOUTHERN PACIFIC PETROLEUM)

OLD:

LINKDT	LINKENDDT	PERMNO	PERMCO	LINKTYPE	LINKFLAG
19910101	20060720	71571	4222	LU	BBB

NEW:

LINKDT	LINKENDDT	PERMNO	PERMCO	LINKTYPE	LINKFLAG
19820129	20031121	71571	4222	LC	BBB
20031122	99999999	0	0	NR	XXX

GVKEY 23197 (ZOOM TECHNOLOGIES INC)

OLD:

LINKDT	LINKENDDT	PERMNO	PERMCO	LINKTYPE	LINKFLAG
19891229	19900926	0	0	NU	XXX
19900927	99999999	77011	10759	LU	BBB

NEW:

LINKDT	LINKENDDT	PERMNO	PERMCO	LINKTYPE	LINKFLAG
19890101	19900926	0	0	NR	XXX
19900927	99999999	77011	10759	LC	BBB

GVKEY 28386 (EZCHIP SEMICONDUCTOR LTD)

OLD:

LINKDT	LINKENDDT	PERMNO	PERMCO	LINKTYPE	LINKFLAG
19910131	19921118	0	0	NU	XXX
19921119	99999999	78168	11808	LU	BBB

NEW:

LINKDT	LINKENDDT	PERMNO	PERMCO	LINKTYPE	LINKFLAG
19910101	19921118	0	0	NR	XXX
19921119	99999999	78168	11808	LC	BBB

GVKEY 30662 (SIRIUS XM RADIO INC)

OLD:

LINKDT	LINKENDDT	PERMNO	PERMCO	LINKTYPE	LINKFLAG
19930101	19940912	0	0	NU	XXX
19940913	99999999	80924	13304	LU	BBB

NEW:

LINKDT	LINKENDDT	PERMNO	PERMCO	LINKTYPE	LINKFLAG
19930101	19940912	0	0	NR	XXX
19940913	99999999	80924	13304	LC	BBB

GVKEY 30903 (VOXEL)

OLD:

LINKDT	LINKENDDT	PERMNO	PERMCO	LINKTYPE	LINKFLAG
19890101	19941031	0	0	NU	XXX
19941101	19980331	81117	13405	LU	BBB

NEW:

LINKDT	LINKENDDT	PERMNO	PERMCO	LINKTYPE	LINKFLAG
19890101	19941031	0	0	NR	XXX
19941101	19980901	81117	13405	LC	BBB
19980902	99999999	0	0	NR	XXX

GVKEY 62403 (FLETCHER BUILDING LTD)

OLD:

LINKDT	LINKENDDT	PERMNO	PERMCO	LINKTYPE	LINKFLAG
19940701	19960313	0	0	NU	XXX
19960314	20010322	83205	31597	LC	BBB
20010323	20020613	88923	41366	LC	BBB
20020614	20030630	0	0	NR	XXX

NEW:

LINKDT	LINKENDDT	PERMNO	PERMCO	LINKTYPE	LINKFLAG
19940701	19960324	0	0	NR	XXX
19960325	20010322	83205	31597	LC	BBB
20010323	20010402	0	0	NR	XXX
20010403	20020613	88923	41366	LC	BBB
20020614	99999999	0	0	NR	XXX

GVKEY 102704 (UNITED UTILITIES GROUP PLC)

OLD:

LINKDT	LINKENDDT	PERMNO	PERMCO	LINKTYPE	LINKFLAG
19980129	99999999	85777	34642	LU	BBB

NEW:

LINKDT	LINKENDDT	PERMNO	PERMCO	LINKTYPE	LINKFLAG
19980129	20070622	85777	34642	LC	BBB
20070623	99999999	0	0	NR	XXX

GVKEY 127234 (CELERA CORP)

OLD:

LINKDT	LINKENDDT	PERMNO	PERMCO	LINKTYPE	LINKFLAG
19990506	99999999	86806	21387	LS	BBB

NEW:

LINKDT	LINKENDDT	PERMNO	PERMCO	LINKTYPE	LINKFLAG
19990430	20080630	0	0	NR	XXX
20080701	99999999	92750	53057	LC	BBB

GVKEY 16641 (AMERICA FIRST TAX EX IVS -LP)

OLD:

LINKDT	LINKENDDT	PERMNO	PERMCO	LINKTYPE	LINKFLAG
19860131	99999999	0	0	NU	XXX

NEW:

LINKDT	LINKENDDT	PERMNO	PERMCO	LINKTYPE	LINKFLAG
19860430	20080630	0	0	NR	XXX
20080701	99999999	92726	30985	LC	BBB

GVKEY 25681 (CHINA INSONLINE CORP)

OLD:

LINKDT	LINKENDDT	PERMNO	PERMCO	LINKTYPE	LINKFLAG
19910101	19920819	0	0	NR	XXX
19920820	20001023	77865	11678	LC	BBB
20001024	99999999	0	0	NR	XXX

NEW:

LINKDT	LINKENDDT	PERMNO	PERMCO	LINKTYPE	LINKFLAG
19910101	19920819	0	0	NR	XXX
19920820	20001023	77865	11678	LC	BBB
20001024	20080630	0	0	NR	XXX
20080701	99999999	77865	11678	LC	BBB

GVKEY 177895 (GT SOLAR INTL INC)

OLD:

LINKDT	LINKENDDT	PERMNO	PERMCO	LINKTYPE	LINKFLAG
20040401	99999999	0	0	NR	XXX

NEW:

LINKDT	LINKENDDT	PERMNO	PERMCO	LINKTYPE	LINKFLAG
20080724	99999999	92758	53062	LC	BBB

GVKEY 179738 (ENERGY RECOVERY INC)

OLD:

LINKDT	LINKENDDT	PERMNO	PERMCO	LINKTYPE	LINKFLAG
20080412	99999999	0	0	NR	XXX

NEW:

LINKDT	LINKENDDT	PERMNO	PERMCO	LINKTYPE	LINKFLAG
20080702	99999999	92753	53059	LC	BBB

DATA INSTALLATION

Instructions and screen shots for installation are written for Windows. Differences related to Linux and Sun are noted.

WINDOWS:

To install data, insert your CD into the drive and from the Start Menu, select Run `d:\setupwin32.exe`. Click OK.

SUN SOLARIS:

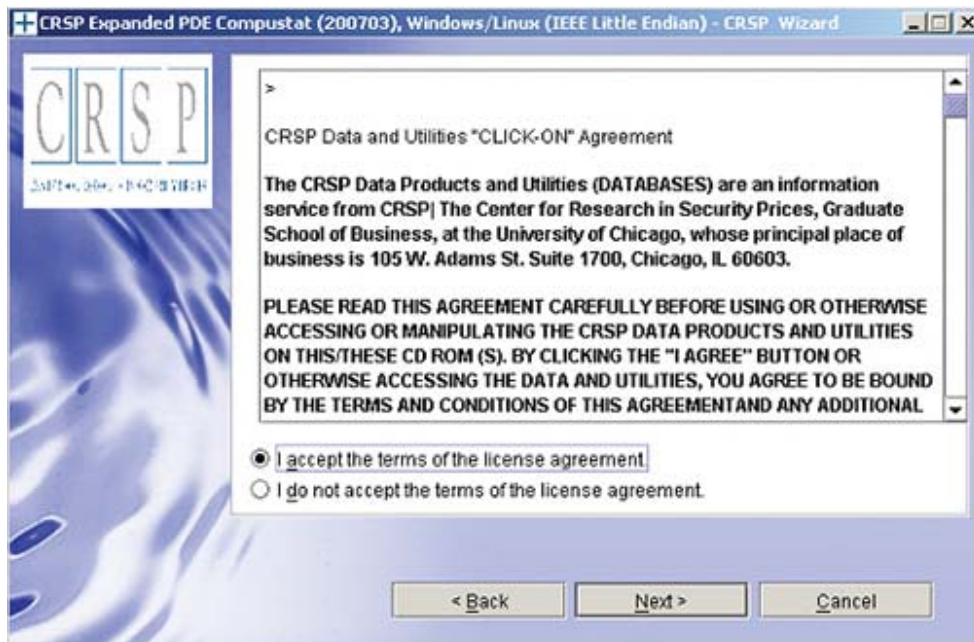
After inserting the CD, a terminal will open with the file, `setupsolaris.bin`. Double click on this setup file to begin the installation process.

LINUX:

Upon insertion of the CD, a terminal will open with the file, `setuplinux.bin`. Double click on this setup file and open a terminal to begin the installation process.



After you have clicked **Next** on the Welcome screen, scroll through and read the CRSP Data and Utilities Agreement. Click to accept the terms of the license agreement, and assuming you do, click **Next**.

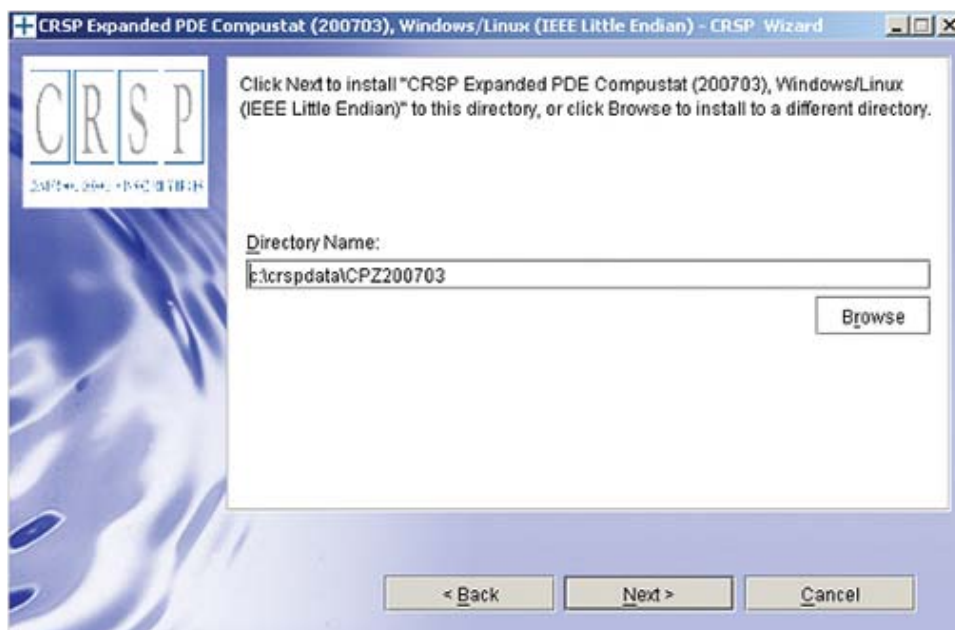


WINDOWS:

The default directory for the data installation is `c:\crspdata\cczyyyymm`. You may accept or modify it. Click **Next**. **Note:** InstallShield does not verify available space. Please see the database parameters on page 1 for space required for installation.

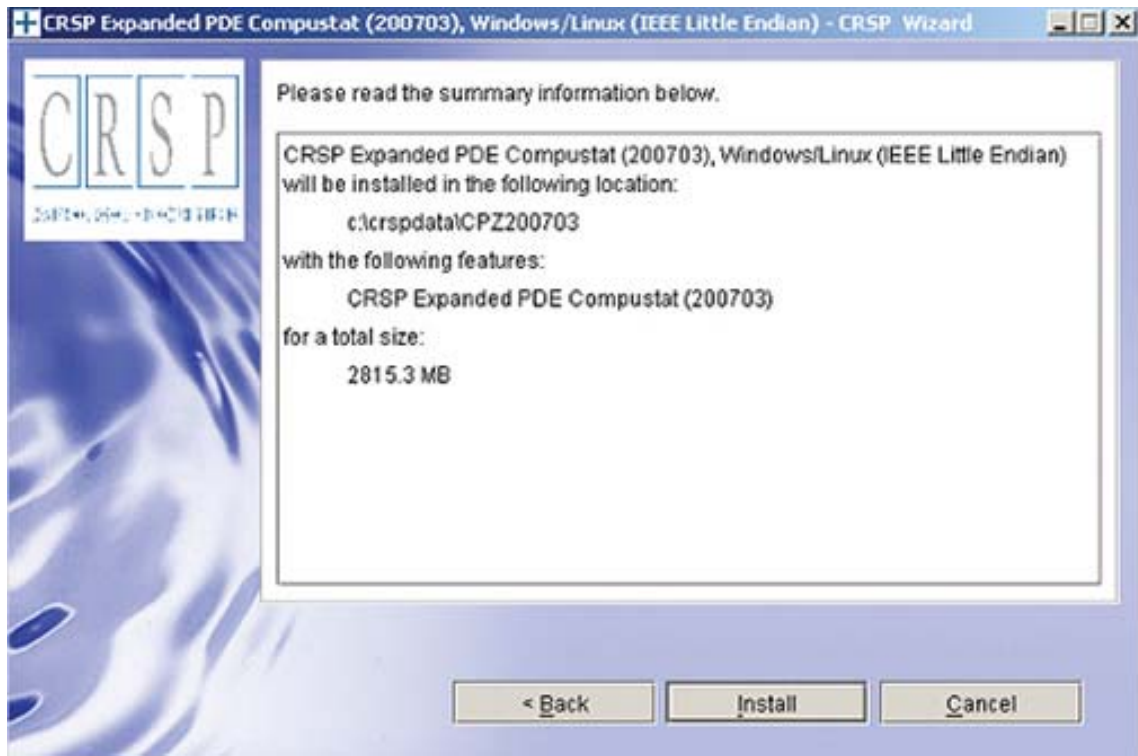
SUN SOLARIS & LINUX:

The default directory for the data installation is `/crspdata`. You must have write permission to the directory you specify, for example, `/home/username/crspdata`. **Note:** InstallShield does not verify available space. Please see the database parameters on page 1 for space required for installation.

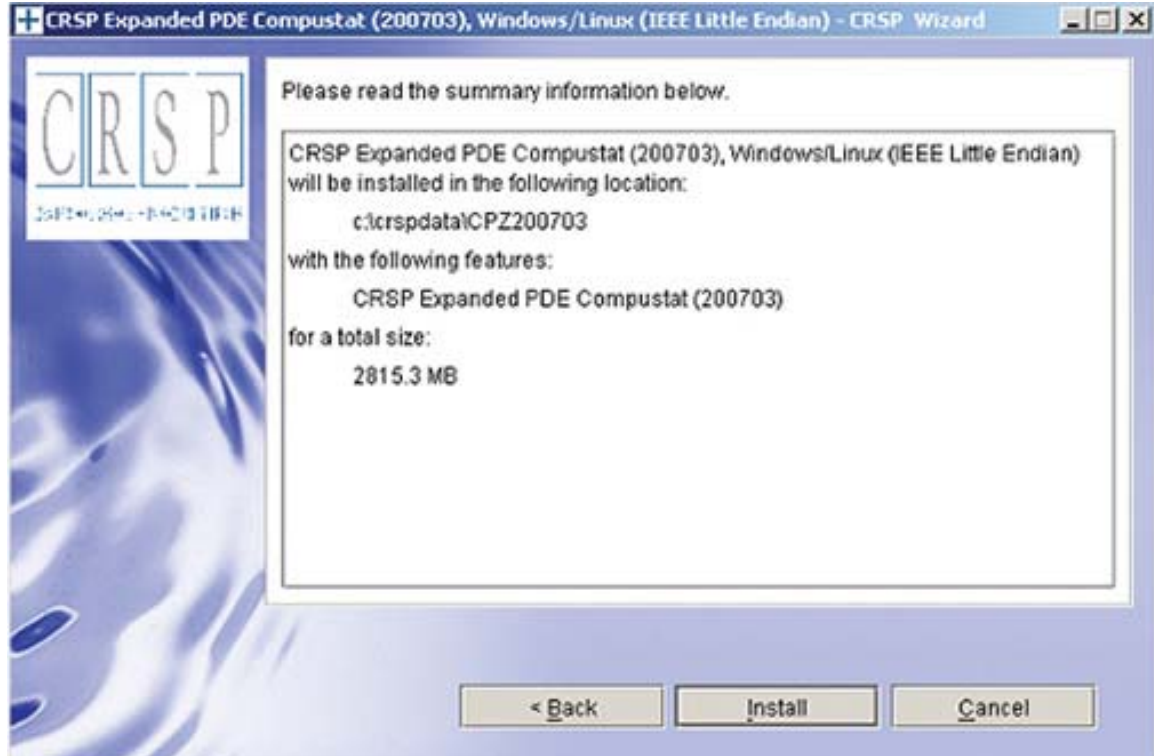


Summary information is displayed: Location, data components and the amount of space that is required for

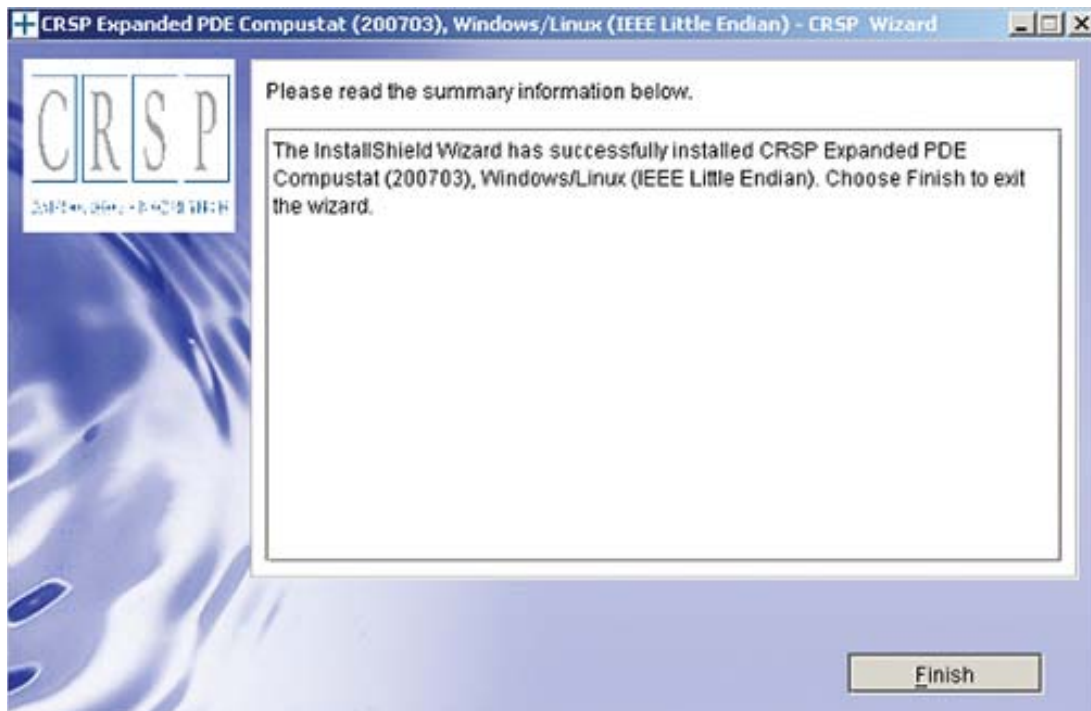
the data. Click on **Install** to proceed.



The screen will display the status of your installation.



A message indicating the success of the installation appears when the process is complete. Click **Finish**.



SUN SOLARIS & LINUX:

After clicking Finish, a file named `crsp.kshrc` must be run to set the local environment variable for the database. At the prompt, type:

```
> . ./crsp.kshrc <enter>
```

Note: If you are not using `ksh`, modifications will be necessary. Check with your Unix administrator.

WINDOWS:

Location of the software and data may be checked by opening **CRSP Client Environment** from the CRSPAccess menu. This new utility provides users a quick and simple way of both checking and switching environment variables if necessary. Where, in the past, users had to go through the Control Panel to manipulate the environment variables, this can now be done by quick editing of the Client Environment screen.

The screenshot shows a window titled "CRSPAccess Client Environment" with a standard Windows title bar. The window contains five sections, each with a label, a description, a text input field, and a "Browse" button:

- CRSP Root**
CRSP Root Directory
This folder/directory contains the CRSP root subfolders that will allow the CRSP utilities to function properly.
Input field: N:\crsprot294\
Browse button
- CRSP Monthly Stock**
CRSP Monthly Stock Database Directory
Input field: c:\crspdata\MIZ200611\
Browse button
- CRSP Daily Stock**
CRSP Daily Stock Database Directory
Input field: c:\crspdata\DIZ200611\
Browse button
- CRSP Work**
CRSP Work Directory
This folder/directory is used for storage of temporary files, log files and contains subfolders that may hold user created files
Input field: C:\CRSP\work\
Browse button
- CRSP Compustat CCM**
CRSP Compustat Merged Database Directory
Input field: c:\crspdata\CPZ200703\
Browse button

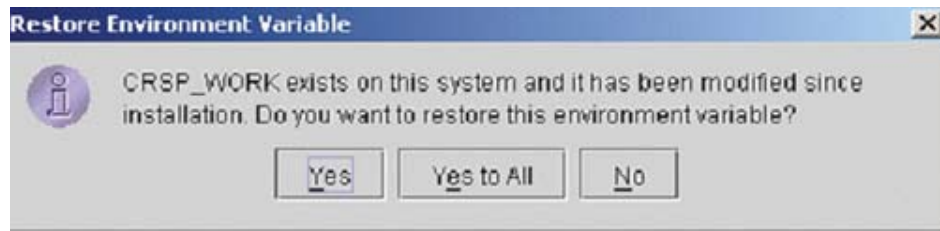
At the bottom of the window, there are three buttons: "Do", "Remove", and "Exit".

UNINSTALL

For each data install, an uninstall is created on the CRSPAccess menu. Data uninstalls do not touch software. Likewise, software uninstalls do not touch data. Each uninstall is done separately. As with the install, the uninstall is wizard-driven. When installation of either software or data is complete, users may be prompted with an option to either reboot the computer or wait until later.

Uninstall & CRSP Client Environment

Each time a path is modified in client environment, the action is recorded. Upon running `uninstall`, a *Restore Environment Variable* prompt will appear:



This prompt appears for each variable for each modification. Answer each prompt and continue cycling through. **Yes** is the default, which will restore environment variables back to what they were prior to the install.