

CRSP/COMPUSTAT MERGED DATABASE RELEASE NOTES

FEBRUARY 2008 MONTHLY UPDATE

INTRODUCTION

These release notes accompany the February 2008 monthly cut of the CRSP/Compustat Merged Database (CCM). The CCM files are updated monthly based on Compustat's final research cuts and shipped monthly, quarterly or annually. Files are delivered on a single compressed CD-ROM and installed using an InstallShield wizard. Please refer to our website for CRSPAccess Release Notes for full product information and for Documents and Guides for all CRSP products at:

<http://www.crsp.chicagosb.edu/support/documentation>

CCM DATA CREATED FROM XPRESSFEED INPUTS

CRSP is now creating the CRSP/Compustat Merged database using new Xpressfeed inputs from Compustat. In this first phase of the transition, the format of the CCM databases is unchanged (CST) and it will continue to work with your existing tools. Several issues that were identified in the previous months have been addressed.

ATTENTION MONTHLY FTP SUBSCRIBERS

CRSP is currently testing FTP delivery and planning to reintroduce it for the March data cut that will be available in April. We will include a patch and simple instructions with the data files. To successfully install the data from the FTP files, subscribers must have already installed this February data cut. Shortly before the data shipment in April, CRSP will contact our FTP subscribers by email with a reminder and relevant information.

ABOUT THE FEBRUARY 2008 CRSP/COMPUSTAT MERGED DATABASE:

The Compustat cut date for this release is February 9, 2008. The database is shipped in its entirety with historical edits for restatements and corrections for each release.

The CD label for the CCM database is CPZ.

CPZ: CRSP Stock and Indices with Compustat data. PDE market data is for listed and research companies.

The database is delivered and supported on three platforms: Windows, Linux and Solaris. It has been tested on CRSPAccess 2.97 and is supported on CRSPAccess versions 2.91 and higher.

PARAMETERS:

- The number of CRSP Securities in the CPZ database is 23,748.
- The number of GVKEYs in the CPZ database is 33,049.
- The number of links in the CPZ database is 54,932.
- Database size is approximately 2.32 Gb.

CALENDARS

The CCM database utilizes the CRSP stock calendars to align properly with CRSP data. Data in the CRSP daily Stock (and Indices) file use daily and annual calendars. Data in the monthly files use monthly, quarterly and annual calendars.

Calendar	Date Range	Date Index Range
Daily trading calendar	19251231-20080208	1-21799
Month-end trading calendar	19251231-20081231	1-997
Year-end trading calendar	19251231-20081231	1-84
Quarter-end trading calendar	19251231-20081231	1-333
Weekly trading calendar	19260102-20081231	1-4331

CONTINUED >>



CENTER FOR RESEARCH IN SECURITY PRICES

A Research Center at ChicagoGSB

DATA EDITS

FEBRUARY 2008 DATA EDITS

GROUP EDITS

Researched and edited gvkeys with LU and NU linktype end dates on 20070418 and LC and NR linktype begin dates on 20070419. For most cases, we changed LU and NU to LC and NR, respectively.

INDIVIDUAL EDITS

GVKEY 9402 (MOVIE STAR INC)

OLD:

LINKDT	LINKENDDT	PERMNO	PERMCO	LINKTYPE	LINKFLAG
19670701	19690323	0	0	NU	XXX
19690324	99999999	48020	21563	LU	BBB

NEW:

LINKDT	LINKENDDT	PERMNO	PERMCO	LINKTYPE	LINKFLAG
19670701	19690323	0	0	NR	XXX
19690324	20080128	48020	21563	LC	BBB

GVKEY 7504 (MGI PHARMA INC)

OLD:

LINKDT	LINKENDDT	PERMNO	PERMCO	LINKTYPE	LINKFLAG
19800701	19820610	0	0	NU	XXX
19820611	99999999	54798	5545	LU	BBB

NEW:

LINKDT	LINKENDDT	PERMNO	PERMCO	LINKTYPE	LINKFLAG
19800701	19820610	0	0	NR	XXX
19820611	20080128	54798	5545	LC	BBB

GVKEY 20423 (HARRAHS ENTERTAINMENT INC)

OLD:

LINKDT	LINKENDDT	PERMNO	PERMCO	LINKTYPE	LINKFLAG
19880101	19900225	0	0	NR	XXX
19900226	99999999	76090	26032	LC	BBB

NEW:

LINKDT	LINKENDDT	PERMNO	PERMCO	LINKTYPE	LINKFLAG
19880101	19900225	0	0	NR	XXX
19900226	20080125	76090	26032	LC	BBB

GVKEY 16843 (FIRST INDIANA CORP)

OLD:

LINKDT	LINKENDDT	PERMNO	PERMCO	LINKTYPE	LINKFLAG
19830101	19830801	0	0	NU	XXX
19830802	20080103	35829	6246	LU	BBB

NEW:

LINKDT	LINKENDDT	PERMNO	PERMCO	LINKTYPE	LINKFLAG
19830101	19830801	0	0	NR	XXX
19830802	20080102	35829	6246	LC	BBB

GVKEY 16769 (CHITTENDEN CORP)

OLD:

LINKDT	LINKENDDT	PERMNO	PERMCO	LINKTYPE	LINKFLAG
19820101	20080102	23326	991	LU	BBB

NEW:

LINKDT	LINKENDDT	PERMNO	PERMCO	LINKTYPE	LINKFLAG
19820101	20071231	23326	991	LC	BBB

GVKEY 16245 (PEOPLE'S UNITED FINL INC)

OLD:

LINKDT	LINKENDDT	PERMNO	PERMCO	LINKTYPE	LINKFLAG
19880101	19880705	0	0	NU	XXX
19880706	99999999	12073	9847	LU	BBB

NEW:

LINKDT	LINKENDDT	PERMNO	PERMCO	LINKTYPE	LINKFLAG
19880101	19880705	0	0	NR	XXX
19880706	99999999	12073	9847	LC	BBB

GVKEY 1712 (ARABIAN AMERICAN DEVELOPMENT)

OLD:

LINKDT	LINKENDDT	PERMNO	PERMCO	LINKTYPE	LINKFLAG
19760101	20070418	14761	352	LU	BBB
20070419	99999999	0	0	NU	XXX

NEW:

LINKDT	LINKENDDT	PERMNO	PERMCO	LINKTYPE	LINKFLAG
19760101	19830116	14761	352	LC	BBB
19830117	19830126	0	0	NR	XXX
19830127	20001011	14761	352	LC	BBB
20001012	20080128	0	0	NR	XXX
20080129	99999999	14761	352	LC	BBB

GVKEY 13407 (WELLMAN INC)

OLD:

LINKDT	LINKENDT	PERMNO	PERMCO	LINKTYPE	LINKFLAG
19860101	19870602	0	0	NU	XXX
19870603	99999999	11384	9227	LU	BBB

NEW:

LINKDT	LINKENDT	PERMNO	PERMCO	LINKTYPE	LINKFLAG
19860101	19870602	0	0	NR	XXX
19870603	20071207	11384	9227	LC	BBB
20071208	99999999	0	0	NR	XXX

GVKEY 64844 (MIDWAY GOLD CORP)

OLD:

LINKDT	LINKENDT	PERMNO	PERMCO	LINKTYPE	LINKFLAG
20051223	99999999	0	0	NR	XXX

NEW:

LINKDT	LINKENDT	PERMNO	PERMCO	LINKTYPE	LINKFLAG
20080103	99999999	92540	52932	LC	BBB

DATA INSTALLATION

Instructions and screen shots for installation are written for Windows. Differences related to Linux and Sun arenoted.

WINDOWS:

To install data, insert your CD into the drive and from the Start Menu, select Run `d:\setupwin32.exe`. Click OK.

SUN SOLARIS:

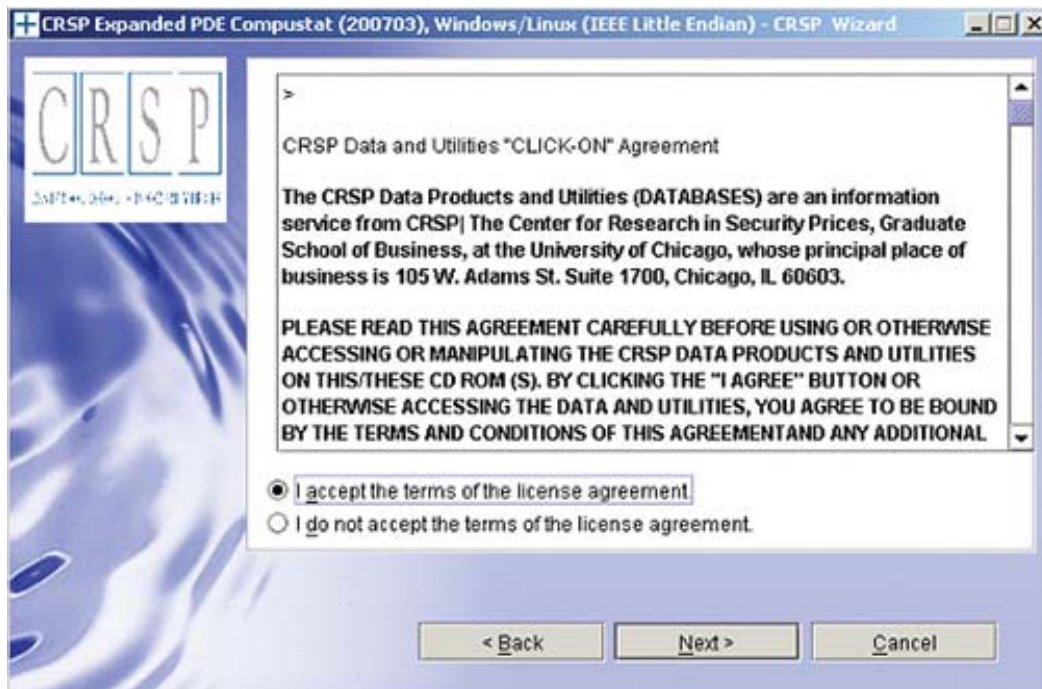
After inserting the CD, a terminal will open with the file, `setupsolaris.bin`. Double click on this setup file to begin the installation process.

LINUX:

Upon insertion of the CD, a terminal will open with the file, `setuplinux.bin`. Double click on this setup file and open a terminal to begin the installation process.



After you have clicked **Next** on the Welcome screen, scroll through and read the CRSP Data and Utilities Agreement. Click to accept the terms of the license agreement, and assuming you do, click **Next**.

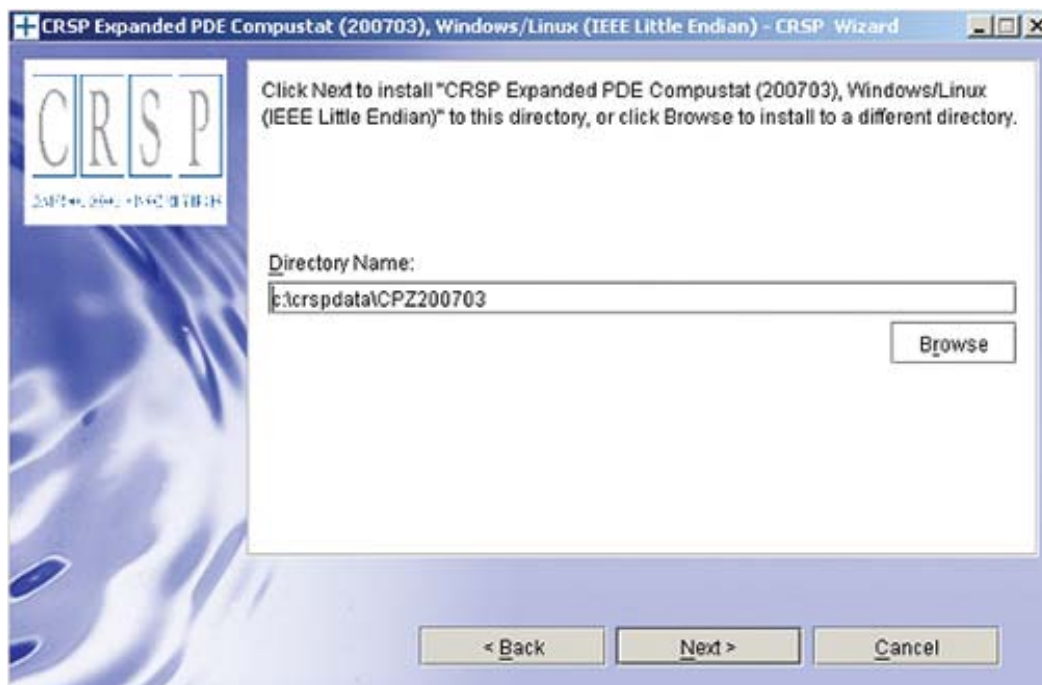


WINDOWS:

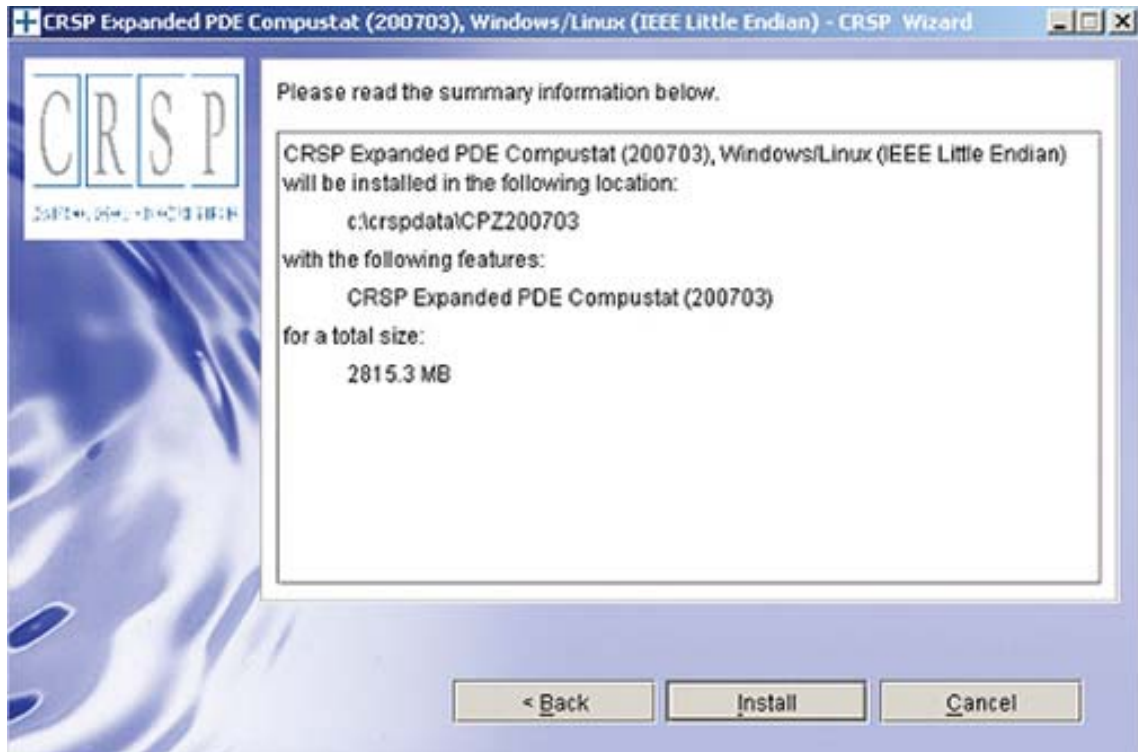
The default directory for the data installation is `c:\crspdata\cczyyyymm`. You may accept or modify it. Click **Next**. **Note:** InstallShield does not verify available space. Please see the database parameters on page 1 for space required for installation.

SUN SOLARIS & LINUX:

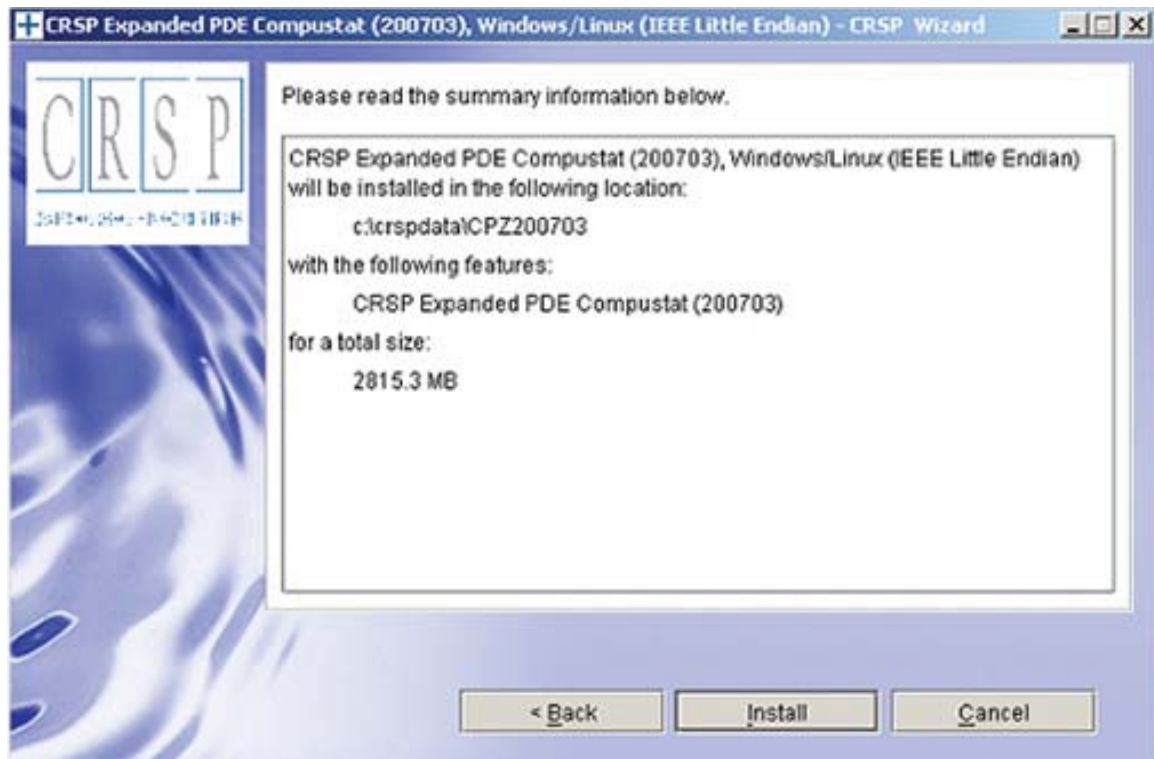
The default directory for the data installation is `/crspdata`. You must have write permission to the directory you specify, for example, `/home/username/crspdata`. **Note:** InstallShield does not verify available space. Please see the database parameters on page 1 for space required for installation.



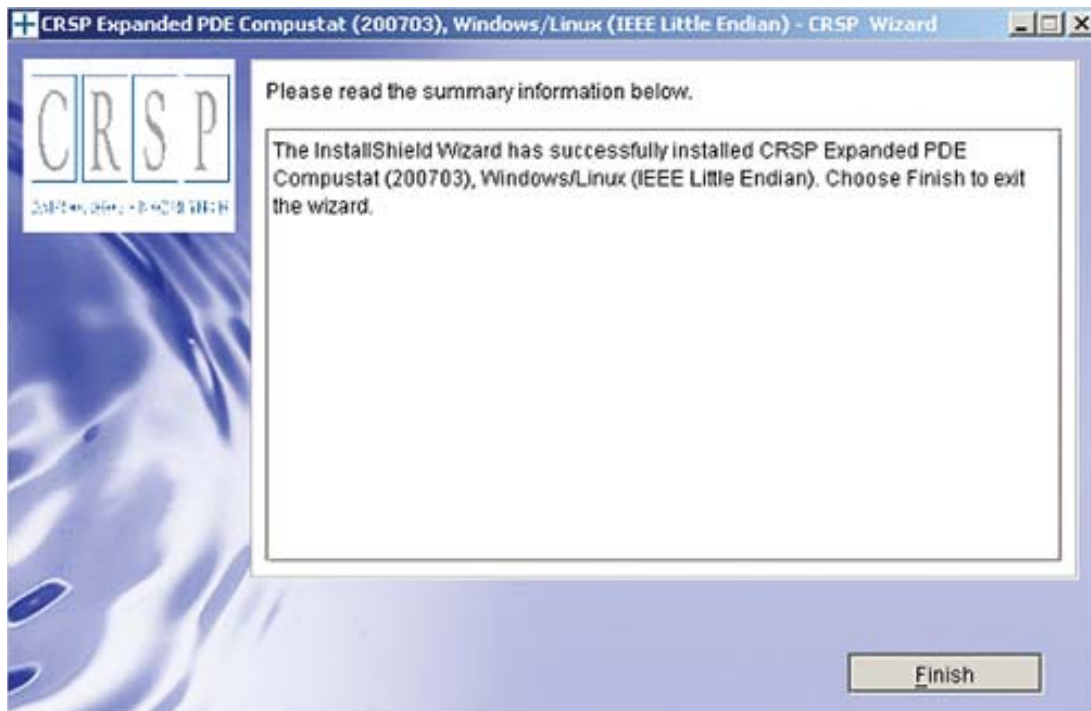
Summary information is displayed: Location, data components and the amount of space that is required for the data. Click on **Install** to proceed.



The screen will display the status of your installation.



A message indicating the success of the installation appears when the process is complete. Click **Finish**.



SUN SOLARIS & LINUX:

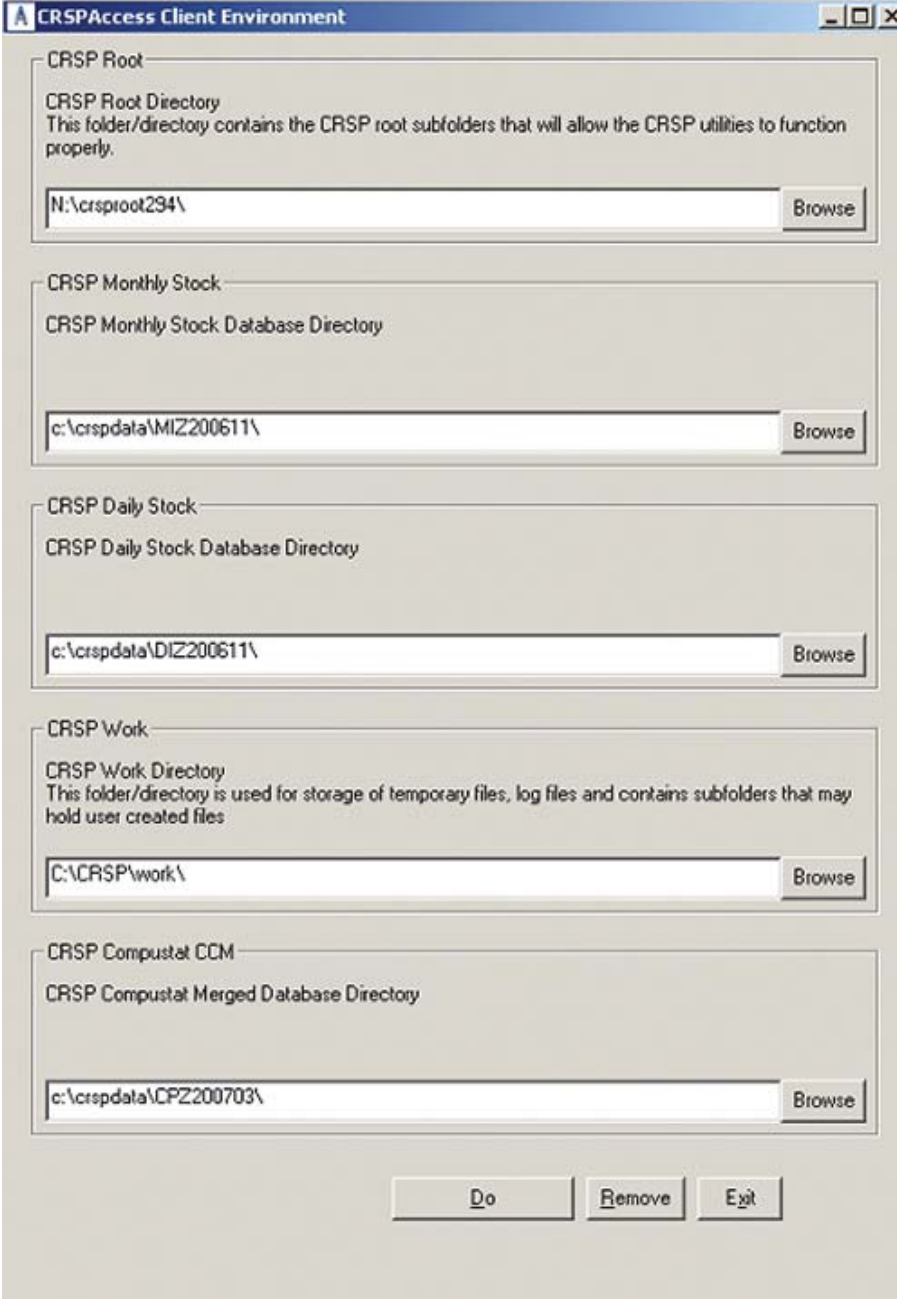
After clicking Finish, a file named `crsp.kshrc` must be run to set the local environment variable for the database. At the prompt, type:

```
> . ./crsp.kshrc <enter>
```

Note: If you are not using `ksh`, modifications will be necessary. Check with your Unix administrator.

WINDOWS:

Location of the software and data may be checked by opening **CRSP Client Environment** from the CRSPAccess menu. This new utility provides users a quick and simple way of both checking and switching environment variables if necessary. Where, in the past, users had to go through the Control Panel to manipulate the environment variables, this can now be done by quick editing of the Client Environment screen.



The screenshot shows a window titled "CRSPAccess Client Environment" with a standard Windows title bar. The window is divided into five sections, each with a title and a description, followed by a text input field and a "Browse" button:

- CRSP Root**
CRSP Root Directory
This folder/directory contains the CRSP root subfolders that will allow the CRSP utilities to function properly.
Input field: N:\crsprot294\
Browse button
- CRSP Monthly Stock**
CRSP Monthly Stock Database Directory
Input field: c:\crspdata\MIZ200611\
Browse button
- CRSP Daily Stock**
CRSP Daily Stock Database Directory
Input field: c:\crspdata\DIZ200611\
Browse button
- CRSP Work**
CRSP Work Directory
This folder/directory is used for storage of temporary files, log files and contains subfolders that may hold user created files
Input field: C:\CRSP\work\
Browse button
- CRSP Compustat CCM**
CRSP Compustat Merged Database Directory
Input field: c:\crspdata\CPZ200703\
Browse button

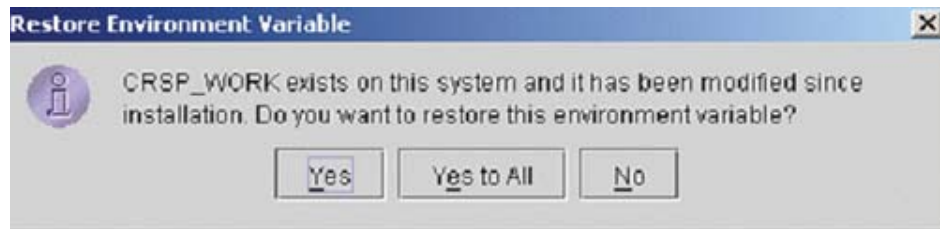
At the bottom of the window, there are three buttons: "Do", "Remove", and "Exit".

UNINSTALL

For each data install, an uninstall is created on the CRSPAccess menu. Data uninstalls do not touch software. Likewise, software uninstalls do not touch data. Each uninstall is done separately. As with the install, the uninstall is wizard-driven. When installation of either software or data is complete, users may be prompted with an option to either reboot the computer or wait until later.

Uninstall & CRSP Client Environment

Each time a path is modified in client environment, the action is recorded. Upon running `uninstall`, a *Restore Environment Variable* prompt will appear:



This prompt appears for each variable for each modification. Answer each prompt and continue cycling through. **Yes** is the default, which will restore environment variables back to what they were prior to the install.