

These release notes pertain to the June 2012 Quarterly release of the CRSP US Stock and Index databases.

### JUNE 2012 DATA EDITS

#### GROUP EDITS

BEGIN DATE	END DATE	DESCRIPTION
1962	2012	Reviewed and corrected: 1. Instances where securities with different PERMCOs and CNUMs still had identical company names and 2. Cases where securities with identical PERMCOs and CNUMs have different company names. Edits have been made to company names to satisfy name consistency rules. Project is 100% complete.

#### INDIVIDUAL EDITS

PERMNO	COMPANY NAME	BEGIN DATE	END DATE	DESCRIPTION
83239	BANKATLANTIC BANCORP INC	20090828	20090828	Changed factor to adjust prices to 0 from 2.3313 for distribution on 20090828
92944	CHINA NORTH EAST PETRO HLDGS LTD	20120229	20120531	Removed all data from 20120301-20120531 and added delisting information on 20120229.
92991	CHINA NUTRIFRUIT GROUP LTD	20120426	20120531	Removed all data from 20120427-20120531 and added delisting information on 20120426.
92300	CHINACAST EDUCATION CORP	20120330	20120531	Removed all data from 20120402-20120531 and added delisting information on 20120330
87381	CITY TELECOM H K LTD	20120510	20120510	Changed semi-annual distribution amount to 0.38643 from 0.38669 on ex-date 20120510
93133	G L G LIFE TECH CORP	20120502	20120531	Removed all data from 20120503-20120531 and added delisting information on 20120502
87233	GOLDEN TELECOM INC	20060316	20060316	Removed duplicate distribution on ex-date 20060136
85559	INTERVEST BANCSHARES CORP	19971125	20120611	Added share class A for 19971125-20120611
91411	OILSANDS QUEST INC	20111129	20120531	Removed all data from 20111129-20120531 and added delisting information on 20111128.
93383	PAX WORLD FUNDS TRUST II	20120329	20120329	Changed distribution code to 1232 from 1242 on exdate 20120329.
13247	PROSHARES TRUST	20120321	20120321	Changed distribution code to 1232 from 1262 on exdate 20120321.
13192	PROSHARES TRUST	20120321	20120321	Changed distribution code to 1232 from 1262 on exdate 20120321.
84116	SOUTHBANC SHARES INC	20120313	20120313	Removed distribution on ex-date 20120313
91949	VANGUARD BOND INDEX FUNDS	20110113	20120531	Changed name to VANGUARD BOND INDEX FUNDS from VANGUARD BOND INDEX FUNDSA for 20110113-present

### MAY 2012 DATA EDITS

#### GROUP EDITS

BEGIN DATE	END DATE	DESCRIPTION
1980	2010	Reviewed and corrected: 1. Instances where securities with different PERMCOs and CNUMs still had identical company names and 2. Cases where securities with identical PERMCOs and CNUMs have different company names. Edits have been made to company names to satisfy name consistency rules. Project is 10% complete.
2001	2012	Reviewed raw distribution data where values not found in the database. Edits consisted mainly of distribution additions and distribution code changes. Project 15% complete.

**Group Edit Note:**

We made a historical change to the S&P 500 constituent list used for INDNOs 1000510 & 1000511. PERMNO 12456 MOTOROLA MOBILITY HOLDINGS INC was added for 20110104-20120524 and PERMNO 42796 MEREDITH CORP was removed as of 20110104.

**INDIVIDUAL EDITS**

PERMNO	COMPANY NAME	BEGIN DATE	END DATE	DESCRIPTION
90780	AMERICAN ORIENTAL BIOENINRG INC	20120315	20120430	Removed all data from 20120316-20120430 and added delisting information on 20120315
59555	HONDA MOTOR LTD	19721214	20120430	Changed sharecode to 31 from 30 for entire history.
91873	ISHARES TRUST			Changed distribution code to 1222 from 1223 on exdates 20111101, 20111227, and 20120201.
61778	KYOCERA CORP	19760210	20120430	Changed sharecode to 31 from 30 for entire history.
51087	MAKITA CORP	19770131	20120430	Changed sharecode to 31 from 30 for entire history.
13028	MARKET VECTORS E T F TRUST			Changed distribution code to 1222 from 1212 on exdates 20111201, 20111228 and 20120402.
68145	NEONODE INC	20090102	20120430	Added zero namelines to reflect off-exchange activity from 20090102-20120430
88896	OIL SERVICE HOLDRS TRUST			Changed distribution code to 1214 from 2245 on exdate 20120222.
86742	QIAO XING UNIVERSAL RESOURCES	20120413	20120430	Removed all data from 20120416-20120430 and added delisting information on 20120413
51131	SONY CORP	19700917	21020430	Changed sharecode to 31 from 30 for entire history.
85635	TALISMAN ENERGY INC	20110601	20111207	Changed distribution code to 1242 from 1342 on ex-dates 20110601 & 20111207
78960	UNITED STATES ANTIMONY CORP	19910418	20120518	Added zero nameline to reflect off-exchange activity from 19910418-20120518.
11845	WPP GROUP PLC			Changed the ex date from 20010917 to 20010912

**APRIL 2012 DATA EDITS****GROUP EDITS**

BEGIN DATE	END DATE	DESCRIPTION
200912	201012	Reviewed and corrected historical 1212 distribution codes from the start of securities' distribution event histories. Changed distribution codes mainly to 1222, 1232, 1242, 1252 & 1262. Project is 10% complete

**INDIVIDUAL EDITS**

PERMNO	COMPANY NAME	BEGIN DATE	END DATE	DESCRIPTION
90493	ADVANCE AMERICA CASH ADV CTRS IN	20041216	20120330	Changed share class to class A for entire history
91194	CLOUGH GLOBAL OPPORTUNITIES FUND	20060426	20120430	Changed share code to 44 from 11 for entire history
90731	HERCULES TECHNOLOGY GRTH CAP INC	20050609	20120430	Changed share code to 14 from 11 for entire history
93209	I F M INVESTMENTS LTD	20120128	20120330	Changed share class to class A for entire history
93093	OI S A	20120330	20120330	Distribution amount changed to \$1.391444 from \$1.40754 on exdate 20120330
93049	Z S T DIGITAL NETWORKS INC	20120326	20120330	Removed halt record from 20120327-20120330 and added delist array on 20120326

## FILE VERSION SPECIFICS

This table contains version specific information for the CRSP Stock Files with data ending June 2012. It contains the number of securities and information about the maximums of the event arrays.

FILE CODE	# OF SECURITIES	MAX NAMES	MAX DIST	MAX SHARES	MAX DELISTS	MAX GROUPS	MAX NASDIN	FIRST PERMNO	LAST PERMNO
DAZ	29403	39	1464	1289	1	4	2384	10000	93436
MAZ	29351	39	1458	1289	1	4	2384	10000	93436

CALENDAR	DATE RANGE	DATE INDEX RANGE
Daily trading calendar	19251231-20120629	1-22906
Month-end trading calendar	19251231-20120629	1-1039
Year-end trading calendar	19251231-20131231	1-89
Quarter-end trading calendar	19251231-20131231	1-353
Weekly trading calendar	19260102-20120629	1-4513

## CRSPACCESS PRODUCT INFORMATION

To simplify installation for our subscribers, data are bundled into product groups. Information relevant to each product group is listed in the table below.

PRODUCT NAME	DATABASE	MEDIA	SIZE	INDEXES	PORTFOLIOS	COMPONENTS & DESCRIPTION
CRSP 1925 US Stock and Index Database	FIZyyyyymm	DVD	3.7 GB	All CRSP indexes and portfolio assignments	All portfolios	DI - 1925 Daily US Stock & Index Database MI - 1925 Monthly US Stock & Index Database IF - CRSP Supplemental US Indexes
CRSP 1925 US Stock	FAZyyyyymm	DVD	3.3 GB	CRSP NYSE/ AMEX/ NASDAQ Value-weighted Market, CRSP NYSE/ AMEX/ NASDAQ Equal-weighted Market, S&P 500 Composite, NASDAQ Composite		DA - 1925 Daily US Stock MA - 1925 Monthly US Stock IN - CRSP Limited US Indexes
CRSP 1962 US Stock	A6Zyyyyymm	DVD	2.9 GB	CRSP NYSE/ AMEX/ NASDAQ Value-weighted Market, CRSP NYSE/ AMEX/ NASDAQ Equal-weighted Market, S&P 500 Composite, NASDAQ Composite		D6 - 1962 Daily US Stock M6 - 1962 Monthly US Stock IN - CRSP Limited US Indexes
CRSP 1962 US Stock and Index Database	AXZyyyyymm	DVD	3.2 GB	See FIZ	All portfolios	DX - 1962 Daily US Stock & Index Database MX - 1962 Monthly US Stock & Index Database IF - CRSP Supplemental US Indexes
CRSP 1925 US Indexes	IFZyyyyymm	DVD	115 MB			IF - CRSP Supplemental US Indexes
CRSP/Compustat Merged Database	CMZyyyyymm	DVD	7.6 GB			CM - Compustat Data formatted in CRSPAccess Database
Daily & Monthly Treasuries in CRSPSift	TRZyyyyymm	DVD	217 MB			TR - Database format for use with CRSPSift
Daily & Monthly Treasuries Files	TFZyyyyymm	DVD	1.16 MB			TF - New expanded daily and monthly files in EXCEL, SAS, and ASCII formats

PRODUCT NAME	DATABASE	MEDIA	SIZE	INDEXES	PORTFOLIOS	COMPONENTS & DESCRIPTION
Daily & Monthly Legacy Treasuries Files	TLZyymm	DVD	1.14 GB			TL - Legacy daily and monthly files in EXCEL, SAS, and ASCII formats
Mutual Fund Database	MFZyymm	DVD	6 GB			MF - Mutual Funds
CRSP/Ziman Daily & Monthly REIT	RAZyymm	DVD	214 MB			RD - Daily REITs RM - Monthly REITs
CRSP/Ziman Monthly REIT	RMZyymm	DVD	10 MB			RM - Monthly REITs

## DATA INSTALLATION

Instructions and screen shots for installation are written for Windows. Differences related to Linux and Sun or media are noted.

### WINDOWS:

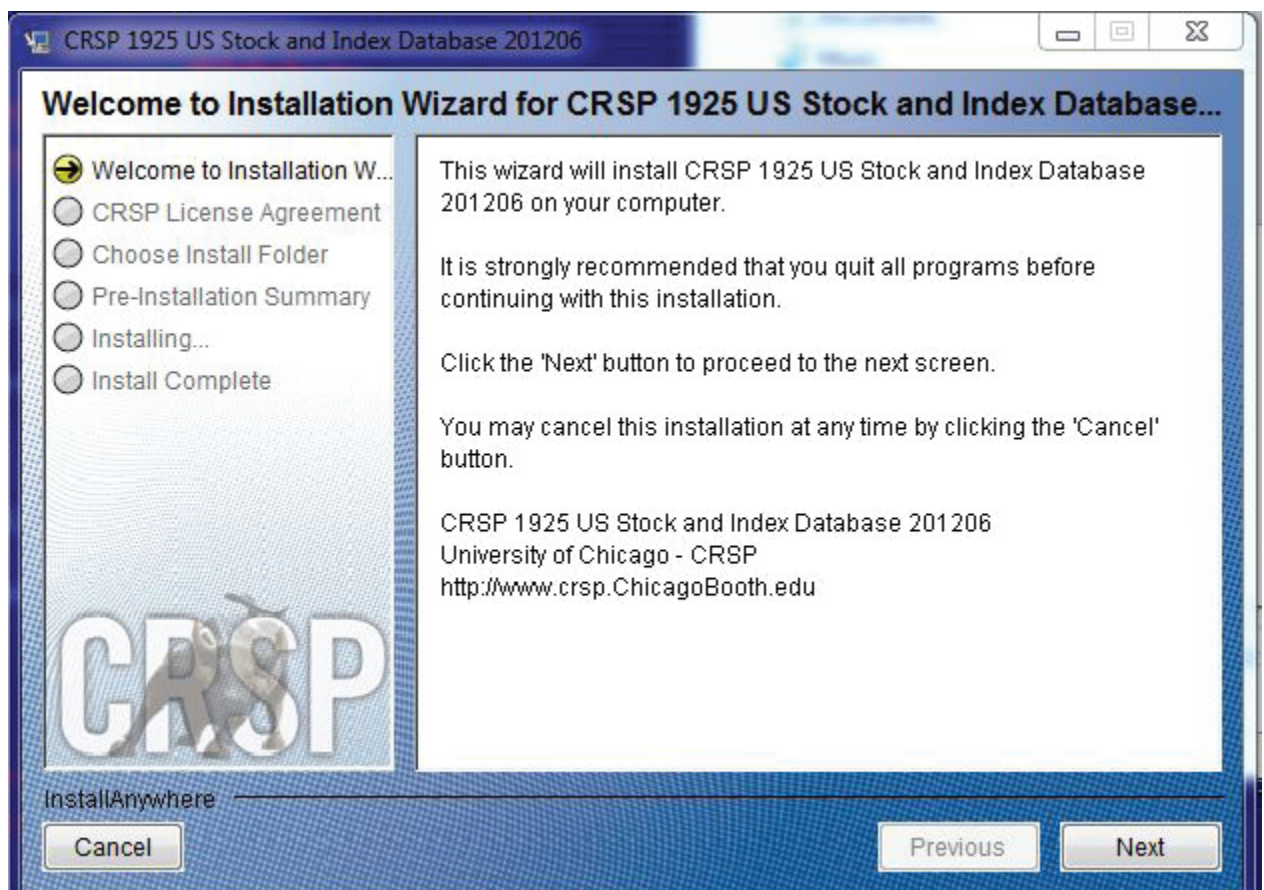
To install data, insert your DVD into the drive and from the Start Menu, select Run d:\setupwin32.exe. Click OK.

### SUN SOLARIS (DVD INSTALL):

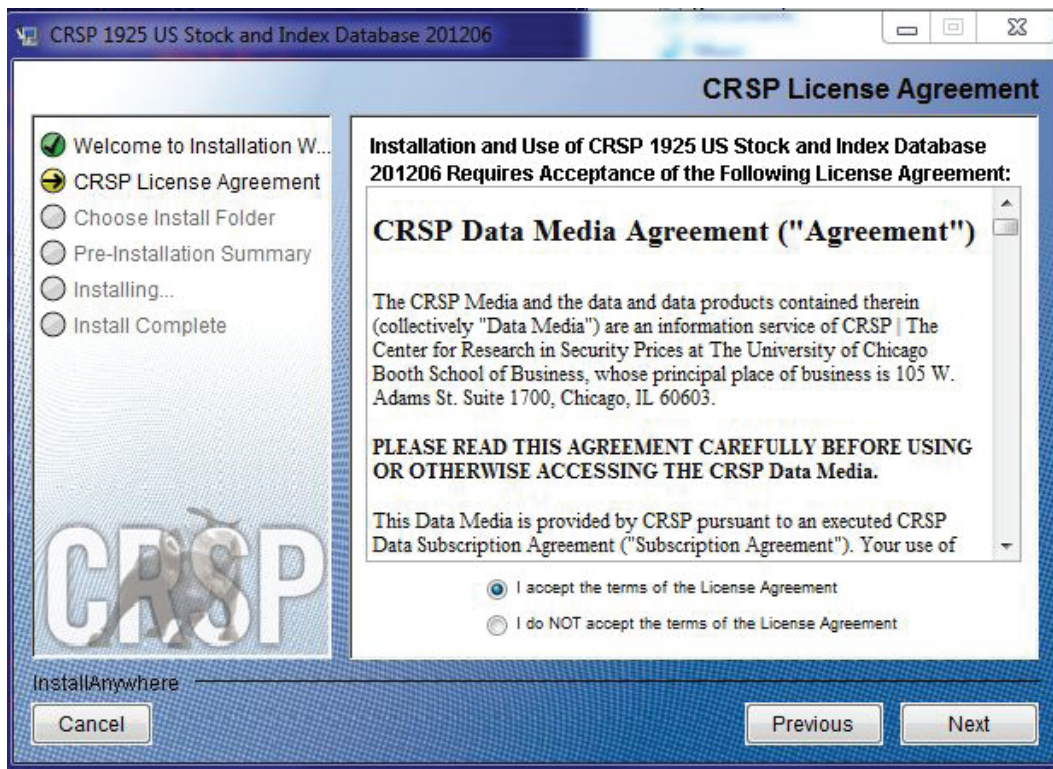
After inserting the DVD, a file manager will open with the file, `setupsolaris.bin`. Double click on this setup file to begin the installation process.

### LINUX(DVD INSTALL):

Upon insertion of the DVD, a file manager will open with the file, `setuplinux.bin`. Double click on this setup file to begin the installation process.

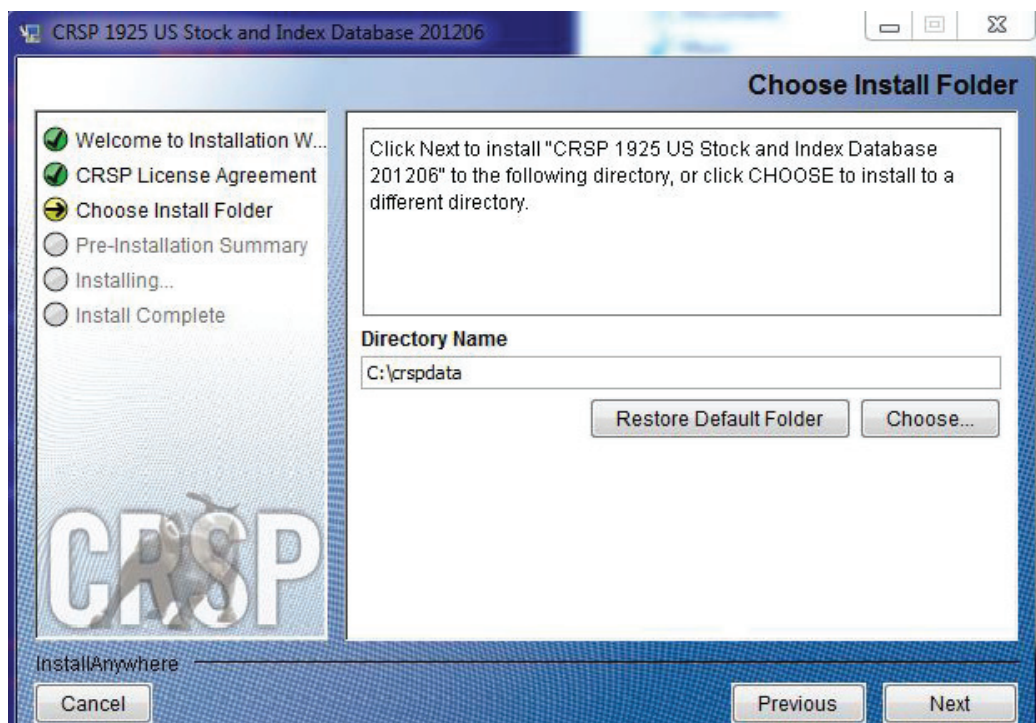


After clicking on **Next** on the Welcome screen, scroll through and read the CRSP Data and Utilities Agreement. Click to accept the terms of the license agreement. Click **Next**.

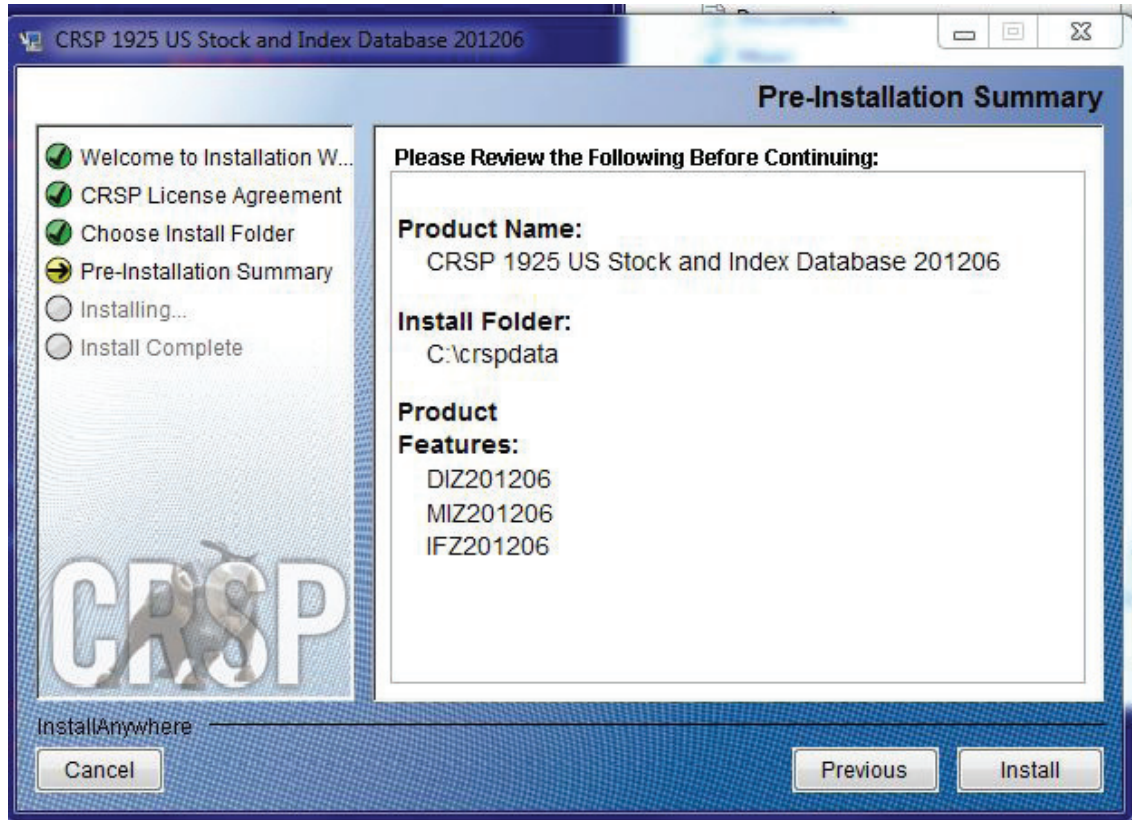


**WINDOWS:** The default directory for the data installation is `c:\crspdata`. You may accept or modify it. Click **Next**.

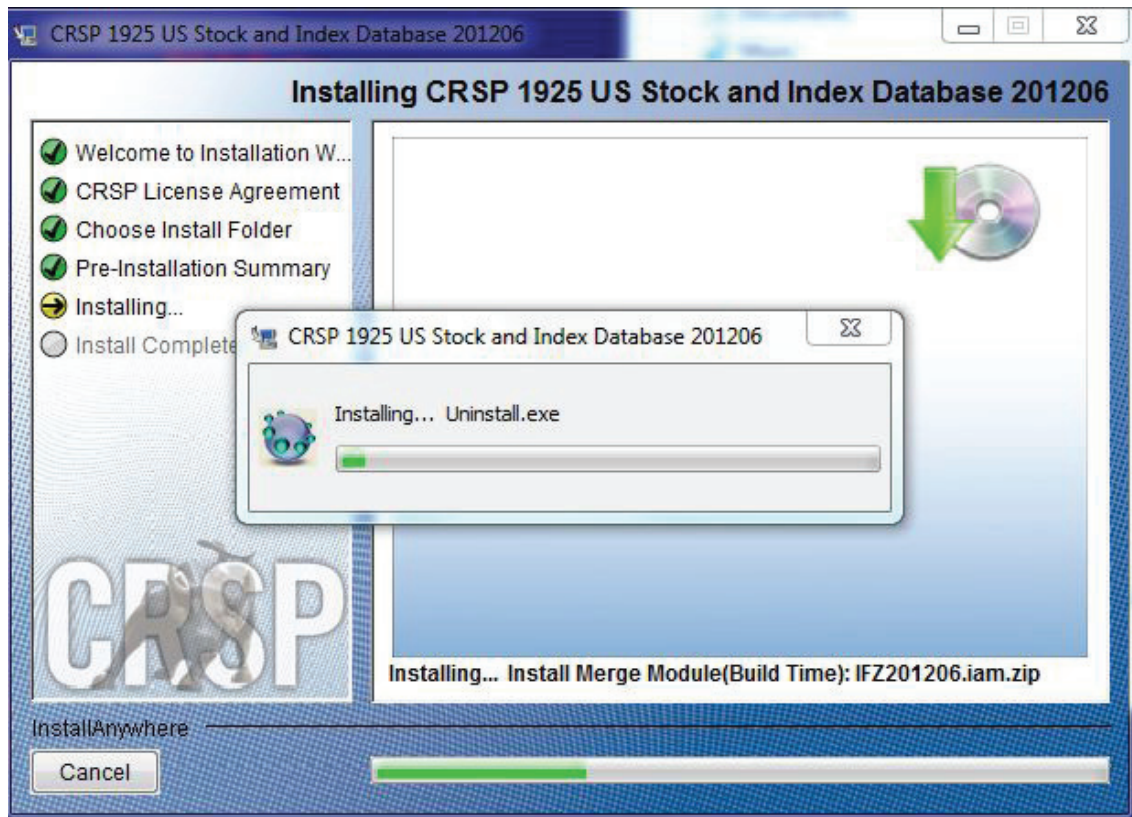
**SUN SOLARIS & LINUX:** The default directory for the data installation is `/crspdata`. You must have write permission to the directory you specify, for example, `/home/username/crspdata`.



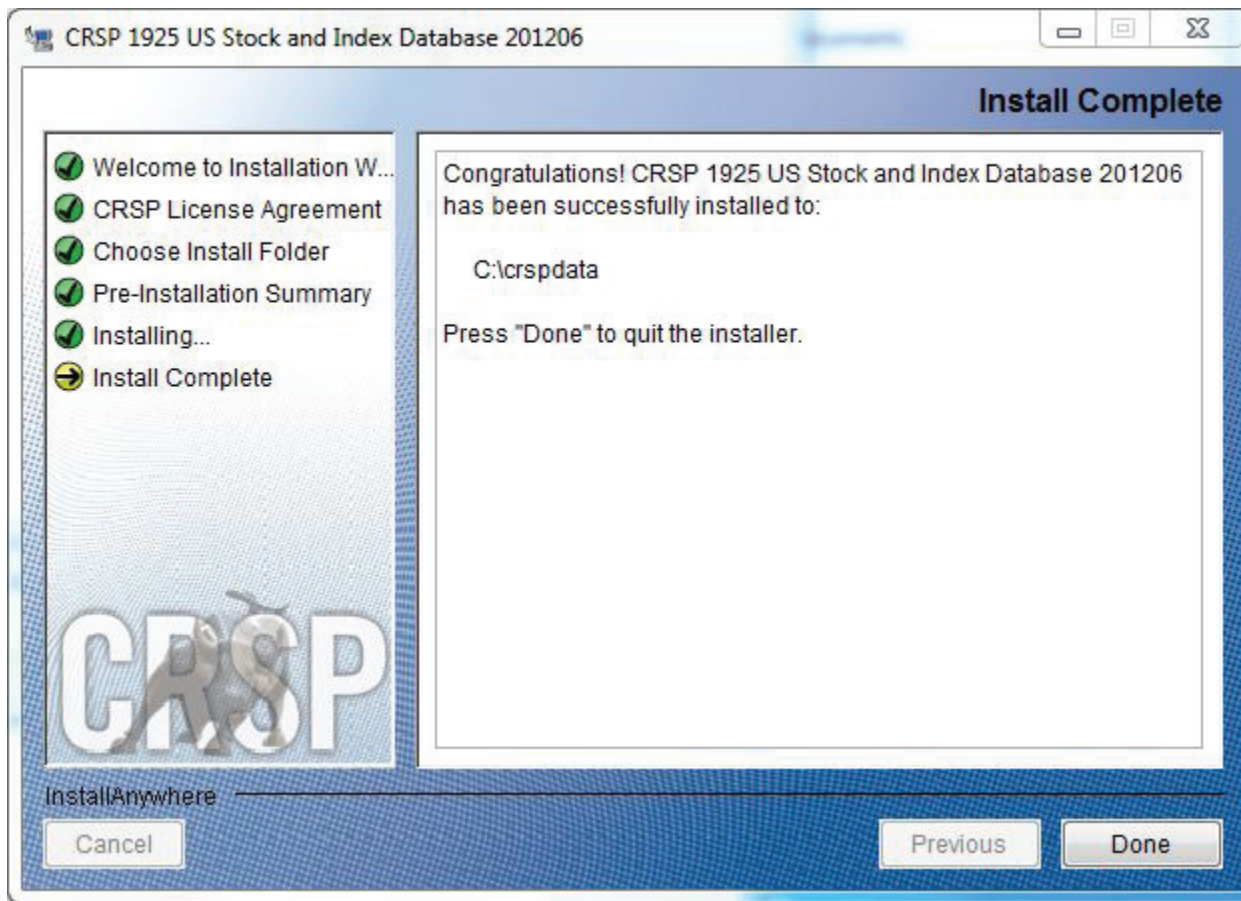
Summary information is displayed: Location, data components and the amount of space that is required for the data. Click on **Install** to proceed.



The screen will display the status of the installation.



A message indicating the success of the installation appears when the process is complete. Click **Done**.



## LINUX AND SUN SOLARIS ENVIRONMENT VARIABLES

### Important Change for Sun Solaris & Linux Installations:

Following previous installs, the `crsp.kshrc` file was run upon completion to set both environment variables and software alias values. This new version of InstallAnywhere sets the environment variables directly on the system when the software is installed. The `crsp.kshrc` file must still be run to set the aliases.

A user may wish to revert back to a previous cut of data or a previous version of the software. In order to do so, CRSP provides shell scripts for users to run that will create a custom-named `kshrc` file that the user may run to set environment variables at the session level. This process also provides a way for a system administrator to create a script that can be put into the system login process so that the environment variables are seen by all users.

To use a shell script for generating an initialization script file, follow these steps:

1. `cd` to the root directory where program files have been loaded.

```
cd accbin
```

2. If you are running `csh` shell, enter

```
source crsp_setup.csh
```

If you are running `ksh` or `bash` shell, enter

```
./ crsp_setup.sh
```

3. The script will prompt for data, root, and log directories. Follow the instructions on the prompts in

terms of trailing slashes in directory names.

The script will create new scripts, `mycrsp.cshrc` in `csh` or `mycrsp.kshrc` in `ksh`. `mycrsp` is the default that may be changed.

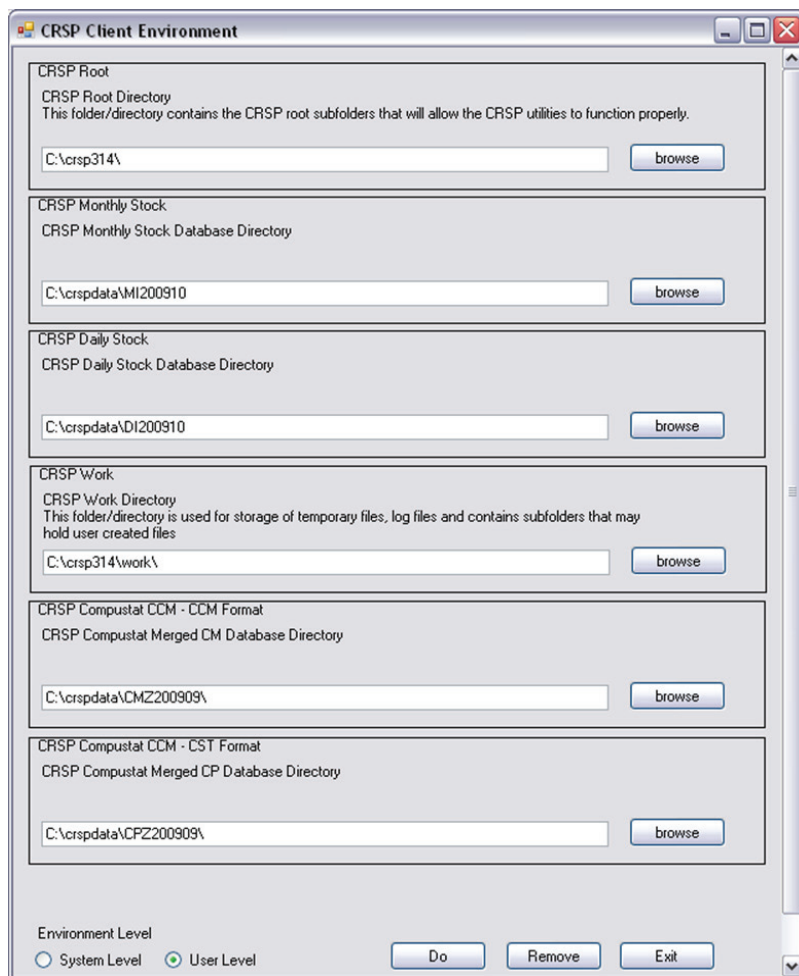
Note: When creating a custom `kshrc` file, be aware that it will overwrite a like-named file if one exists rather than create a new version. The `kshrc` file will overwrite all environment variables, so must be completely filled in.

`env | grep CRSP` can be used to check the CRSP environment variables set.

## WINDOWS:

Location of the software and data may be checked by opening CRSP Client Environment from the CRSPAccess menu. This new utility provides users a quick and simple way of both checking and switching environment variables if necessary. Where, in the past, users had to go through the Control Panel to manipulate the environment variables, this can now be done by quick editing of the Client Environment screen.

Note: For subscribers of the CRSP Compustat Merged database, additional CCM database environments will be displayed for the location of the Compustat data.





## UNINSTALL

To uninstall the data, go through Start > Control Panel > Add or Remove Programs. The data will appear in the Add or Remove Programs list as the volume label and cut date of the database. For example, the October cut of the 1925 US Stock and Index Database will be displayed as FIZ200910. Highlight your selection, click on the Change/Remove button and follow the prompts.