

CRSP/ZIMAN REAL ESTATE DATA SERIES RELEASE NOTES

MARCH 2009 QUARTERLY UPDATE

FILE VERSION SPECIFICS

- The CRSP/Ziman Real Estate Data Series contains data through March 2009.
- The data series contains 505 securities of which 150 are currently trading.
- There is one CD included with this release that may be installed on three platforms: Windows, Linux and Sun. ASCII and SAS versions of the data series are available for all three platforms, and in addition, a Microsoft Access database is available for Windows.
- Installation is done with InstallShield®. Because files are compressed, in order to access them, they must first be installed on your computer.

RESEARCH AND PROGRAMMING NOTES

- Prices and indices in this product begin in January of 1980. This is true even when the Ziman REIT Info table states that the REIT was in existence prior to 1980.
- The base year for the CRSP/Ziman Indices is 12/30/1994, at which point they are set to a value of 100. This differs from CRSP Market Indices which are set to 100 on 12/29/1972.
- Due to some inconsistent trading early in the time series, a few additional rules were implemented to improve the continuity of the portfolios used to calculate the indices. Please refer to Chapter 2 of the CRSP/Ziman Real Estate Data Series Guide for an explanation of universe and price selection criteria.

200903 REIT INDICES SUMMARY

CRSP DATABASE CHANGES:

PERMNO 52214 (WEST PPTYS INC MD) had a shares outstanding change to 21748 from 19748 for 20090227

PERMNO 79770 (LEXINGTON REALTY TRUST) had a shares outstanding change to 100642 from 100300 for 20090227

PERMNO 80381 (AVALONBAY COMMUNITIES INC) had a dividend amount change to \$0.8925 from \$2.70 for ex-date 20081224 and distribution code 1232

PERMNO 81087 (SUPERTEL HOSPITALITY INC) had a shares outstanding change to 20925 from 20924 for 20081231-20090227

PERMNO 85472 (INVESTORS REAL ESTATE TRUST) had a shares outstanding change to 59127 from 58793 for 20090130-20090227

PERMNO 91285 (VESTIN REALTY MORTGAGE II INC) had a shares outstanding change to 13799 from 14570 for 20081231-20090129 and to 13785 from 14570 from 20090130-20090227

PERMNO 91373 (VESTIN REALTY MORTGAGE I INC) had a shares outstanding change to 6631 from 6875 for 20081231-20090129 and to 6593 from 6875 from 20090130-20090227

200902 REIT INDICES SUMMARY

CRSP ADDS, DELISTS AND CHANGES

PERMNO 70818 (AMERICAN LAND LEASE INC) delisted on 20090217

CRSP DATABASE CHANGES:

PERMNO 55029 (MONMOUTH REAL ESTATE INVT CORP) had a shares outstanding change to 24765 from 24586 for 20081231-20090201

PERMNO 89823 (GLADSTONE COMMERCIAL CORP) had a shares outstanding change to 8563 from 8565 for 20081231-present

200901 REIT INDICES SUMMARY

CRSP ADDS, DELISTS AND CHANGES

PERMNO 26535 (TARRAGON CORP NEV) delisted on 20090121.

SYSTEM REQUIREMENTS

- SAS version 8 or higher, Microsoft Access, or an analytical tool of your choice
- A CD-ROM drive
- Sufficient disk space to load and manipulate the data series.*

DATA SERIES FORMAT	MONTHLY DATA SERIES	DAILY/MONTHLY DATA SERIES
ASCII	7.76 MB	164 MB
Microsoft Access	7.55 MB	141 MB
SAS V 9.1	9.11 MB	175 MB

*Additional disk space will be needed for data manipulation.

FILE NAME SPECIFICATIONS AND INSTALLATION

ASCII

All files contain variable-width records, ending with line-feeds, with pipe-delimited “|” fields. There are no header records. See Table Definitions in Chapter 3 for field order in each file.

FILE NAME	DESCRIPTION
crsp_daily_data.txt*	daily REIT security data
crsp_header.txt	security REIT header data
crsp_monthly_data.txt	monthly REIT security data
crsp_names.txt	security name history of REITS
crsp_ziman_daily_index.txt*	daily index results

FILE NAME	DESCRIPTION
crsp_ziman_monthly_index.txt	monthly index results
index_type_map.txt	definitions of REIT indexes and characteristics
price_type.txt	definitions of available price types
Property_type.txt	definitions of available REIT property types
reit_type.txt	definitions of available REIT categories
sub_property_type.txt	definitions of available REIT property subtypes
ziman_reit_info.txt	REIT information

* present in daily/monthly product only

SAS

Column names and labels are embedded in the data sets. The full descriptions for fields can be found in the table definitions section of Chapter 3.

FILE NAME	DESCRIPTION
crsp_daily_data.sas7bdat*	daily REIT security data and index
crsp_daily_data.sas7bndx*	
crsp_header.sas7bdat	security REIT header data and index
crsp_header.sas7bndx	
crsp_monthly_data.sas7bdat	monthly REIT security data and index
crsp_monthly_data.sas7bndx	
crsp_names.sas7bdat	security name history of REITS and index
crsp_names.sas7bndx	
crsp_ziman_daily_index.sas7bdat*	daily index results and index
crsp_ziman_daily_index.sas7bndx*	
crsp_ziman_monthly_index.sas7bdat	monthly index results and index
crsp_ziman_monthly_index.sas7bndx	
index_type_map.sas7bdat	definitions of REIT indexes and characteristics
price_type.sas7bdat	definitions of available price types
Property_type.sas7bdat	definitions of available REIT property types
reit_type.sas7bdat	definitions of available REIT categories
sub_property_type.sas7bdat	definitions of available REIT property subtypes
ziman_reit_info.sas7bdat	REIT information and index
ziman_reit_info.sas7bndx	

* present in Daily/Monthly product only

MSACCESS

A Microsoft Access database is provided named `reit_db.mdb` containing all data tables. The database is in Access 2000 file format. The design view menu within Access can be used to view

available fields, data types, and descriptions.

DATA INSTALLATION

Instructions and screen shots for installation are written for Windows. Differences related to Linux and Sun are noted where applicable.

WINDOWS:

To install data, insert your CD into the drive and from the Start Menu, select Run `d:\setupwin32.exe`. Click **OK** to proceed.

LINUX:

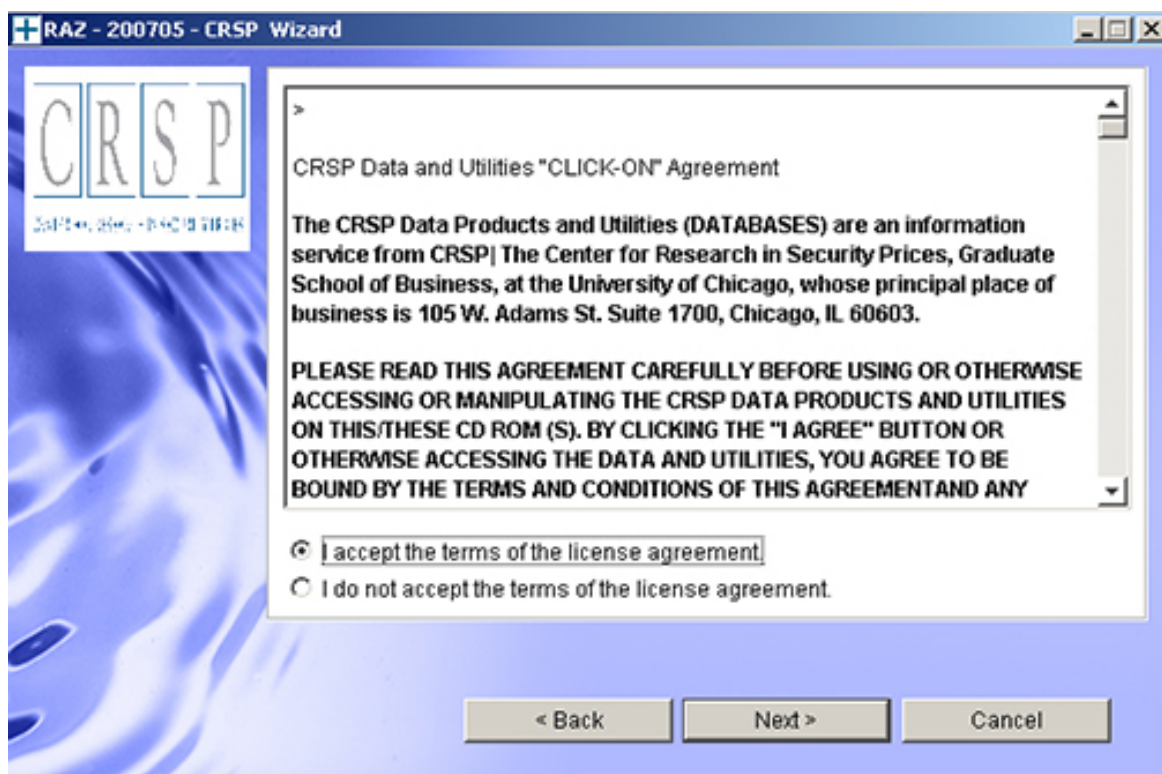
Upon insertion of the CD, a file manager will open with the file, `SETUPLINUX.BIN`. Double click on this setup file and run in a terminal to begin the installation process.

SUN:

Upon insertion of the CD, a file manager will open with the file, `SETUPSOLARIS.BIN`. Double click on this file to begin the installation process.



After clicking on **Next** on the Welcome screen, scroll through and read the CRSP Data and Utilities Agreement. Click to accept the terms and select **Next**.

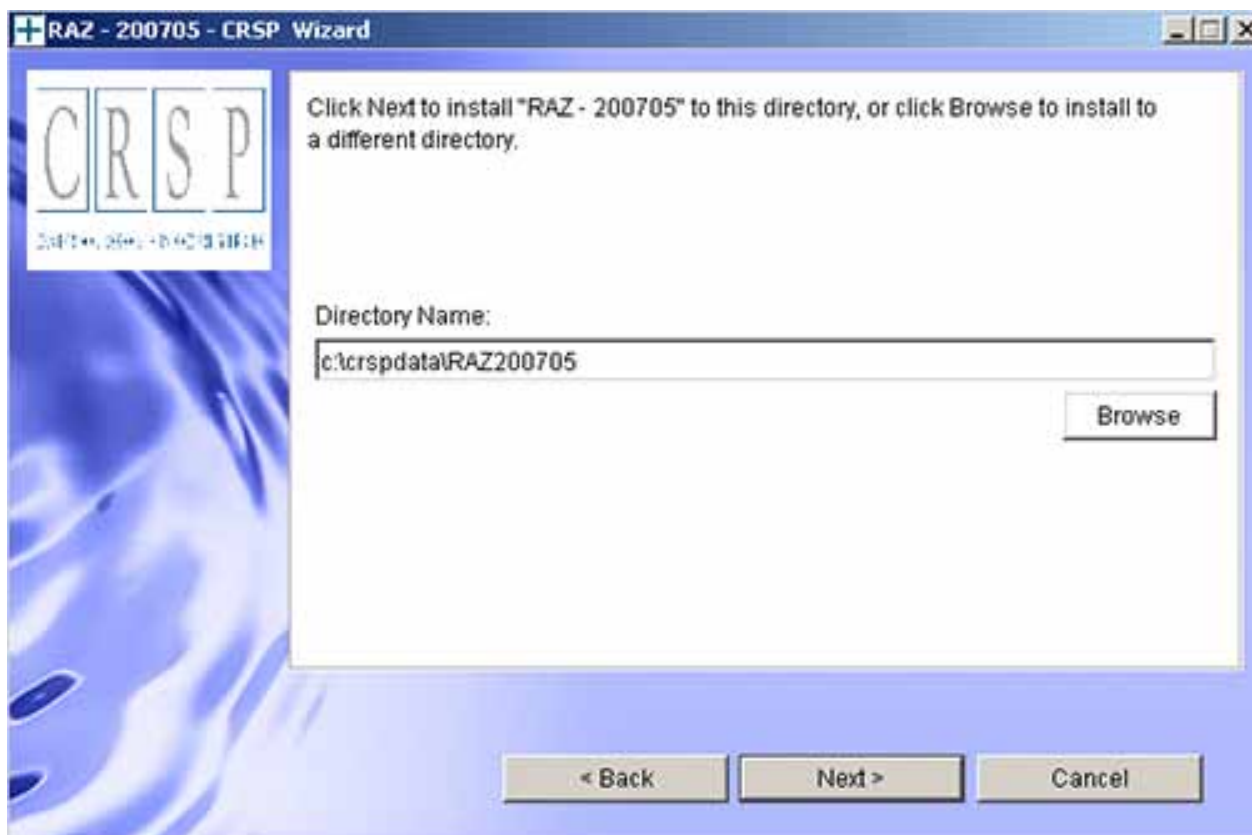


WINDOWS:

The default directory for the data installation is `c:\crspdata\RAZyyyyymm` for daily/monthly and `c:\crspdata\RMZyyyyymm` for monthly only. You may accept or modify the location. Click Next.

LINUX AND SUN:

The default directory for the data installation is `/crspdata/RA(or M)Zyyyyymm`. You must create a root directory, for example, `/home/username/crspdata/RA(or M)Zyyyyymm`.

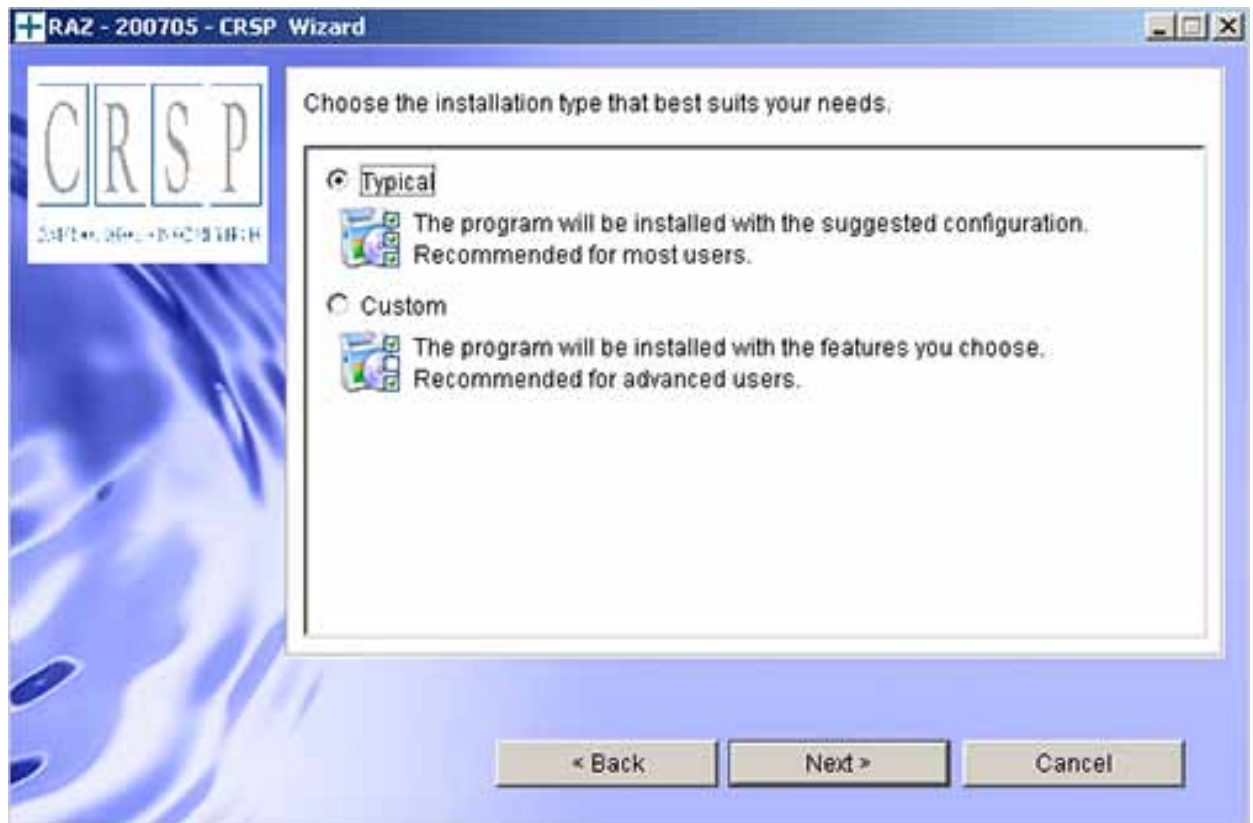


WINDOWS:

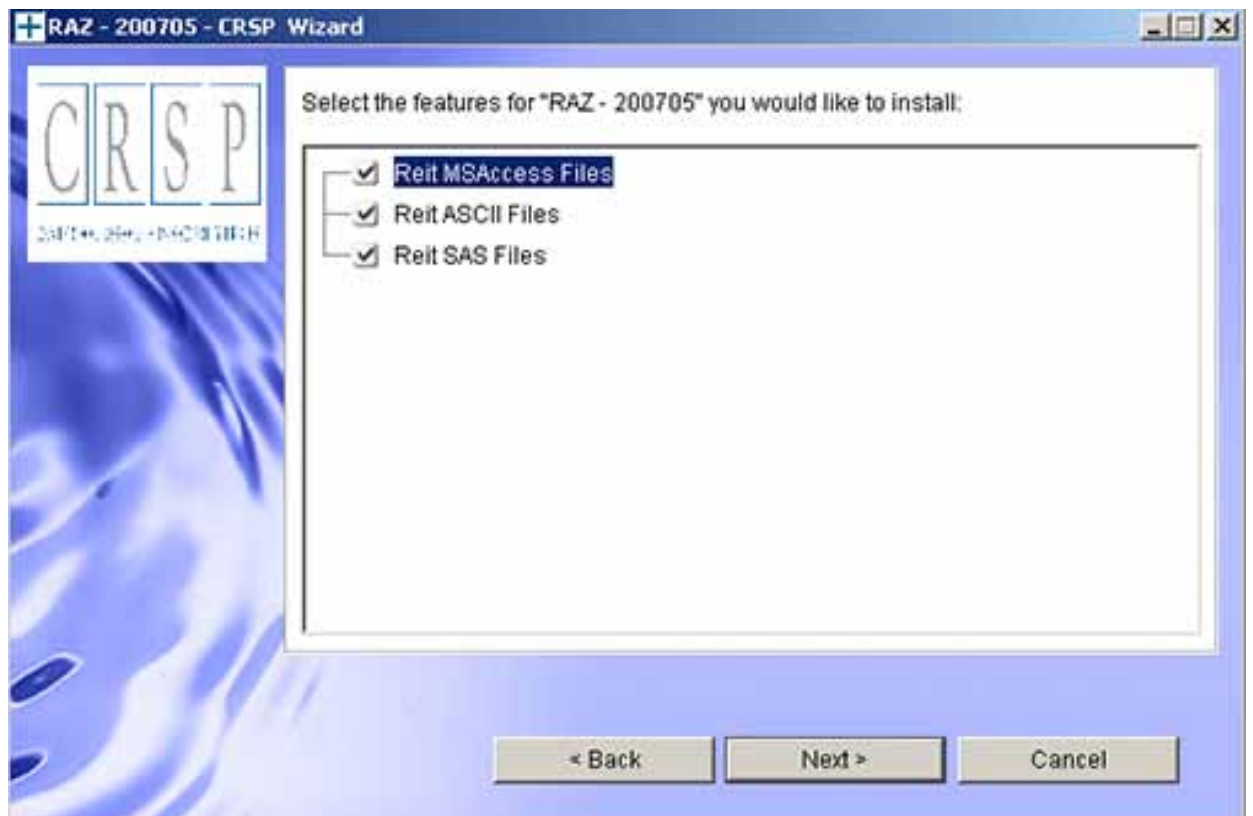
You have the choice of either a typical or custom installation. The typical installation will install *all* data formats (ASCII, Microsoft Access, and SAS).

LINUX AND SUN:

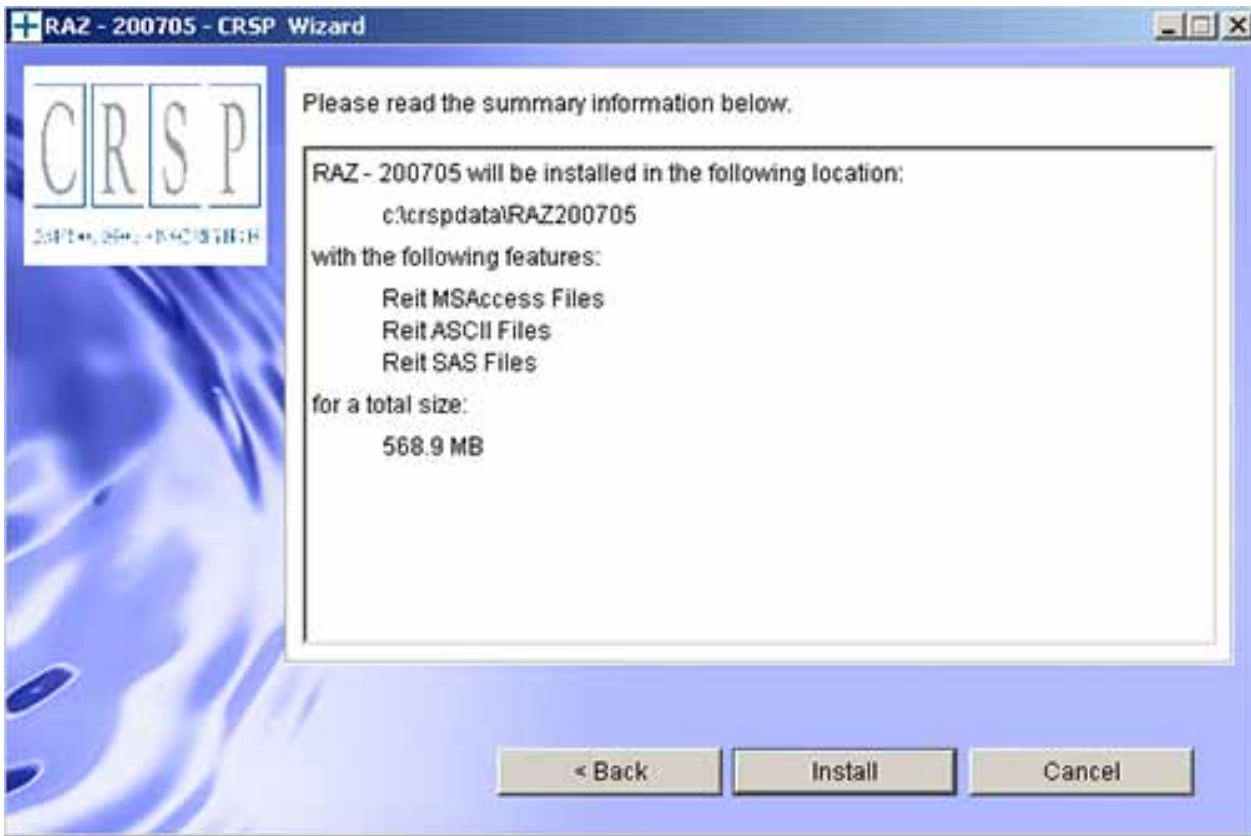
ASCII and SAS data files are available for installation on Linux and Sun.



Selecting the Custom option will allow you to pick and choose the file types that you wish to install to your computer. Once you have checked the files you wish to install, click **Next**.



Once files are selected for installation, a confirmation screen with summary information is displayed, including location, data components and the amount of space that is required for the data. You may select the **Back** button if changes are needed, or **Install** to proceed.



A message indicating the success of the installation appears when the process is complete. Click **Finish**.

