

These release notes pertain to the March 2013 Quarterly release of the CRSP US Stock and Index databases.

HEADS UP! NEW DELIVERY METHOD AND DATA FORMATS ON THE HORIZON!

Within the next six months, CRSP will begin offering data delivery via the “Cloud” and shifting away from monthly DVDs. Through Managed File Transfer, CRSP subscribers will be able to effortlessly download data products either ad hoc, or as scheduled processes. More information will become available as we firm up our timeline.

A number of subscribers have requested flat-file versions of the CRSP databases that can be more easily consumed and built into automated processes. In response to these requests, CRSP is actively working on creating these flat-file versions, which once created, will also be available through the “MFT” delivery.

MARCH 2013 DATA EDITS

PERMNO	COMPANY NAME	BEGIN DATE	END DATE	DESCRIPTION
92555	CAPE BANCORP INC	20121210	20121210	Changed distribution code to 1232 from 1212 on ex-date 20121210.
18710	CARRIERS & GENERAL CORP	19590303	19601130	Changed distribution code to 1232 from 1212 for distributions on ex-dates 19590303, 19590605, 19590904, 19600301, 19600607 & 19600907
18710	CARRIERS & GENERAL CORP	19601130	19601130	Removed cash distribution with dividend amount of \$0.035 on ex-date 19601130
13455	CHANTICLEER HOLDINGS INC			Changed SIC code to 8742 from 9999 throughout entire history
13694	CHEMUNG FINANCIAL CORP	20121213	20121213	Changed distribution code to 1232 from 1212 on ex-date 20121213.
13724	FLEXSHARES TRUST	20121227	20121227	Changed distribution code to 1232 from 1212 on ex-date 20121227.
13727	FLEXSHARES TRUST	20121227	20121227	Changed distribution code to 1232 from 1212 on ex-date 20121227.
13728	FLEXSHARES TRUST	20121227	20121227	Changed distribution code to 1232 from 1212 on ex-date 20121227.
48020	FREDERICKS HOLLYWOOD GROUP INC	20130221	20130221	Changed delist code to 560 from 584 on delist date 20130221.
18016	HERCULES INC	19590306	19590902	Changed distribution code to 1232 from 1212 for distributions on ex-dates 19590306, 19590605 & 19590902
12355	HORIZON TECHNOLOGY FINANCE CORP	20121114	20130219	Changed distribution code to 1222 from 1232 for 20121114-20130219.
85799	JINPAN INTERNATIONAL LTD	20121206	20121206	Changed distribution code to 1272 from 1242 for dividend with ex-date 20121206.
11993	LONGWEI PETROLEUM INVT HLDG LTD	20130103	20130321	Removed halt record from 20130104-20130321 and added delist array on 20130103.
13650	MONROE CAPITAL CORP	20121212	20121212	Changed distribution code to 1232 from 1212 on ex-date 20121212.
18155	MYERS F E & BROS CO	19581209	19591209	Changed distribution code to 1232 from 1212 for distributions on ex-dates 19581209, 19590309, 19590609, 19590908 & 19591209
90540	NATIONAL INTERSTATE CORP	20121121	20121121	Changed distribution amount from \$2.10 to \$0.10 and added special distribution with amount \$2.00 on ex-date 20121121.
13731	POWERSHARES E T F TRUST	20121221	20121221	Changed distribution code to 1232 from 1212 on ex-date 20121221.
86287	REPUBLIC BANCORP INC KY	20121128	20121128	Changed distribution code to 1272 from 1232 on ex-date 20121128.

PERMNO	COMPANY NAME	BEGIN DATE	END DATE	DESCRIPTION
18948	ROCKWELL INTERNATIONAL CORP	19581210	19590921	Changed distribution code to 1232 from 1212 for distributions on ex-dates 19581210, 19590311, 19590616 & 19590921
17814	SHARON STEEL CORP	19590311	19591209	Changed distribution code to 1232 from 1212 for distributions on ex-dates 19590311, 19590610, 19590910 & 19591209
11056	STERLING FINANCIAL CORP WASH	20091231	20101105	Changed shares outstanding to 52211 from 52179 for 20091231-20100128, to 722941 from 722904 for 20100826-20100831, to 4167529 from 722904 for 20101022-20101104, to 4080904 from 722904 for 20101105-20101118 and to 61832 from 10953 for 20101119-20101207
14816	TOOTSIE ROLL INDS INC	20121213	20121213	Changed distribution amount of \$0.58 to \$0.08, and added distribution amount of \$0.5 and distribution code 1272, on ex-date 20121213.
84283	WEST CORP	20010102	20061024	Name changed to WEST CORP from WEST CORPORATION for 20010102-20061024.
18067	ZENITH ELECTRONICS CORP	19590310	19591208	Changed distribution code to 1232 from 1212 for distributions on ex-dates 19590310, 19590609, 19590908 & 19591208
18067	ZENITH ELECTRONICS CORP	19590525	19590525	Changed record date to 19590506 from 0 on the forward split record on ex-date 19590525

FEBRUARY 2013 DATA EDITS

PERMNO	COMPANY NAME	BEGIN DATE	END DATE	DESCRIPTION
13286	BANCO BRADESCO S A	20120404	20130103	Changed distribution code to 1222 from 1212 on ex-date 20120404; changed distribution code to 1272 from 1222 and distribution amount to .092405 from .092437 on ex-date 20120628; changed distribution code to 1222 from 1272 on ex-date 20121204; changed distribution amount to .009423 from .009051 on ex-date 20130103.
90082	CENTRAL VALLEY COMM BANCORP	20121113	20121113	Changed distribution code to 1232 from 1252 on ex-date 20121113.
84030	EMPIRE RESOURCES INC DEL	20090109	20130203	Added zero nameline to reflect off-exchange activity for 20090109-20130203
22509	P P G INDUSTRIES INC	20130118	20130118	Changed low price to 137.75 from 142.42 on 20130118
61065	TOYS R US INC	19800902	20010823	Changed SIC code to 5945 from 6711 for 19800902-20010823
78003	VERTEX ENERGY INC	19970409	20130212	Added zero namelines to reflect off-exchange activity for 19970409-20130212

JANUARY 2013 DATA EDITS

GROUP EDITS

BEGIN DATE	END DATE	DESCRIPTION
0	0	Reviewed list of 67 permnos with unconfirmed sharecodes (10,30,50,70,80), and replaced with confirmed sharecodes (11,14,31,51,71,81,88,89,7) over the period 1972-2006.

INDIVIDUAL EDITS

PERMNO	COMPANY NAME	BEGIN DATE	END DATE	DESCRIPTION
87152	CENTURY REALTY TRUST	19990827	19990827	Added price and shares data for 19990827
92982	DEER CONSUMER PRODUCTS INC	20120810	20130110	Removed halt record from 20120813-20130110 and added delist array on 20120810.
89812	GRANITE REAL ESTATE INVT TRUST	20120523	20121120	Changed distribution code to 1332 from 1232 for dividends on ex-dates 20120523 and 20121120. Changed distribution code to 1332 from 1232 and dividend amount to 0.506430 from 0.502750 for dividend on ex-date 20120822.
78741	GREAT BASIN GOLD LTD	20120914	20130129	Removed halt record from 20120917-20130128 and added delist array on 20120914

PERMNO	COMPANY NAME	BEGIN DATE	END DATE	DESCRIPTION
87381	HONG KONG TELEVISION NETWORK LTD	20121231	20121231	Changed dividend amount to 0.386877 from 0.387091 on ex-date 20121231.
44768	INTERFACE INC	20120514	20121231	Removed Class A from ticker for 20120514-present
69534	M L MACADAMIA ORCHARDS L P	19860605	20130131	Changed name to MAUNA LOA MACADAMIA PARTNERS LP from MAUNA LOA MACADAMIA PARTNERS for 19860605-19981004.
77069	NUVEEN MI QLTY INC MUNI FD INC	19911017	20121231	Name changed to NUVEEN MI QLTY INC MUNI FD INC from NUVEEN MI INC QLTY MUNI FD INC for the entire history.
13586	PENTAIR LTD			Changed distribution code to 1232 from 1222 for distribution on ex-date 20121024

FILE VERSION SPECIFICS

This table contains version specific information for the CRSP Stock Files with data ending March 2013. It contains the number of securities and information about the maximums of the event arrays.

FILE CODE	# OF SECURITIES	MAX NAMES	MAX DIST	MAX SHARES	MAX DELISTS	MAX GROUPS	MAX NASDIN	FIRST PERMNO	LAST PERMNO
DAZ	29647	39	1538	1473	1	4	2423	10000	93436
MAZ	29595	39	1538	1473	1	4	2423	10000	93436

CALENDAR	DATE RANGE	DATE INDEX RANGE
Daily trading calendar	19251231-20130328	1-23091
Month-end trading calendar	19251231-20130328	1-1048
Year-end trading calendar	19251231-20141231	1-90
Quarter-end trading calendar	19251231-20141231	1-357
Weekly trading calendar	19260102-20130328	1-4552

CRSPACCESS PRODUCT INFORMATION

To simplify installation for our subscribers, data are bundled into product groups. Information relevant to each product group is listed in the table below.

PRODUCT NAME	DATABASE	MEDIA	SIZE	INDEXES	PORTFOLIOS	COMPONENTS & DESCRIPTION
CRSP 1925 US Stock and Index Database	FIZyyyyymm	DVD	3.8 GB	All CRSP indexes and portfolio assignments	All portfolios	DI - 1925 Daily US Stock & Index Database MI - 1925 Monthly US Stock & Index Database IF - CRSP Supplemental US Indexes
CRSP 1925 US Stock	FAZyyyyymm	DVD	3.4 GB	CRSP NYSE/ AMEX/ NASDAQ Value-weighted Market, CRSP NYSE/ AMEX/ NASDAQ Equal-weighted Market, S&P 500 Composite, NASDAQ Composite		DA - 1925 Daily US Stock MA - 1925 Monthly US Stock IN - CRSP Limited US Indexes
CRSP 1962 US Stock	A6Zyyyyymm	DVD	3.0 GB	CRSP NYSE/ AMEX/ NASDAQ Value-weighted Market, CRSP NYSE/ AMEX/ NASDAQ Equal-weighted Market, S&P 500 Composite, NASDAQ Composite		D6 - 1962 Daily US Stock M6 - 1962 Monthly US Stock IN - CRSP Limited US Indexes
CRSP 1962 US Stock and Index Database	AXZyyyyymm	DVD	3.3 GB	See FIZ	All portfolios	DX - 1962 Daily US Stock & Index Database MX - 1962 Monthly US Stock & Index Database IF - CRSP Supplemental US Indexes
CRSP 1925 US Indexes	IFZyyyyymm	DVD	116 MB			IF - CRSP Supplemental US Indexes
CRSP/Compustat Merged Database	CMZyyyyymm	DVD	8.28 GB			CM - Compustat Data formatted in CRSPAccess Database
Daily & Monthly Treasuries in CRSPSift	TRZyyyyymm	DVD	226 MB			TR - Database format for use with CRSPSift
Daily & Monthly Treasuries Files	TFZyyyyymm	DVD	1.2 GB			TF - New expanded daily and monthly files in EXCEL, SAS, and ASCII formats
Daily & Monthly Legacy Treasuries Files	TLZyyymm	DVD	1.16 GB			TL - Legacy daily and monthly files in EXCEL, SAS, and ASCII formats
Mutual Fund Database	MFZyyyyymm	DVD	6 GB			MF - Mutual Funds
CRSP/Ziman Daily & Monthly REIT	RAZyyyyymm	DVD	217 MB			RD - Daily REITs RM - Monthly REITs
CRSP/Ziman Monthly REIT	RMZyyyyymm	DVD	10.3 MB			RM - Monthly REITs

DATA INSTALLATION

Instructions and screen shots for installation are written for Windows. Differences related to Linux and Sun or media are noted.

WINDOWS:

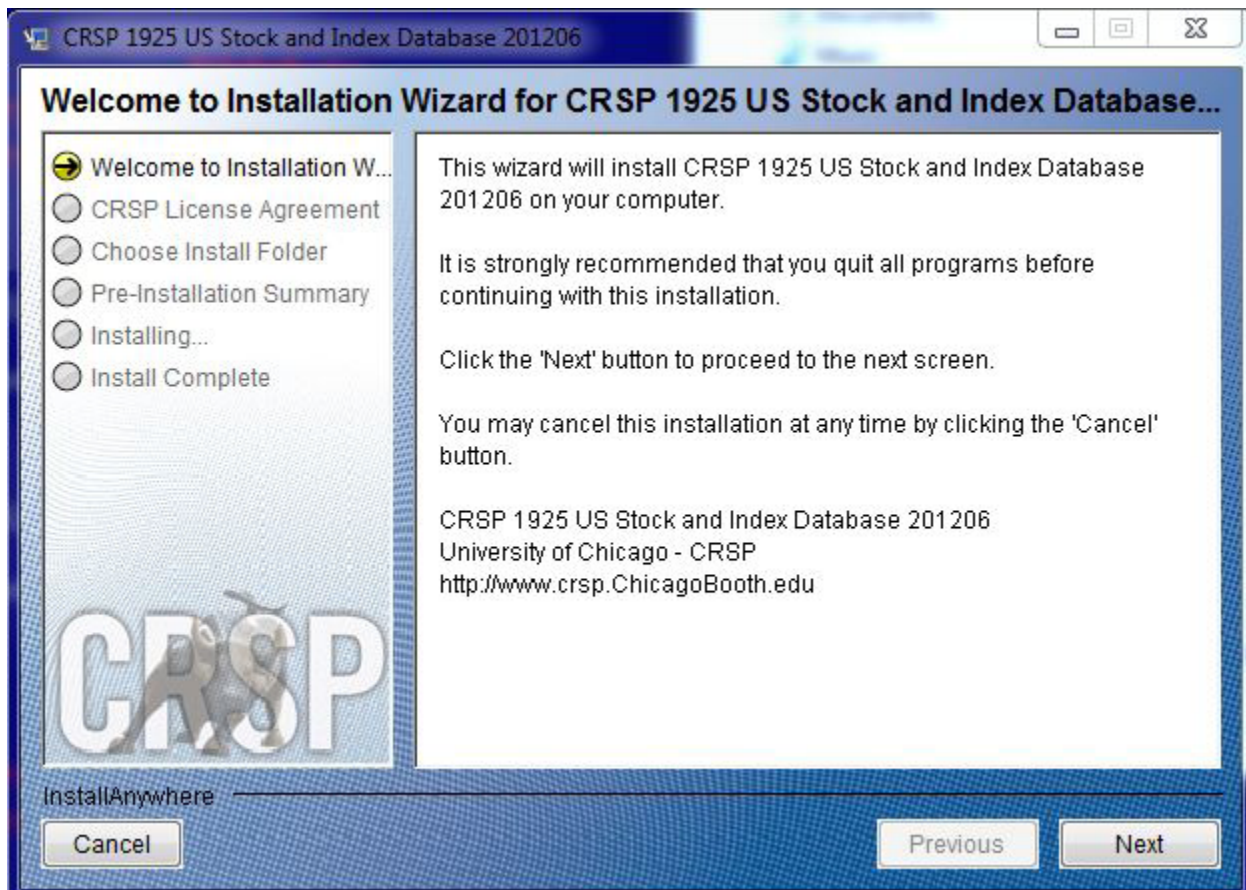
To install data, insert your DVD into the drive and from the Start Menu, select Run d:\setupwin32.exe. Click OK.

SUN SOLARIS (DVD INSTALL):

After inserting the DVD, a file manager will open with the file, `setupsolaris.bin`. Double click on this setup file to begin the installation process.

LINUX(DVD INSTALL):

Upon insertion of the DVD, a file manager will open with the file, `setuplinux.bin`. Double click on this setup file to begin the installation process.

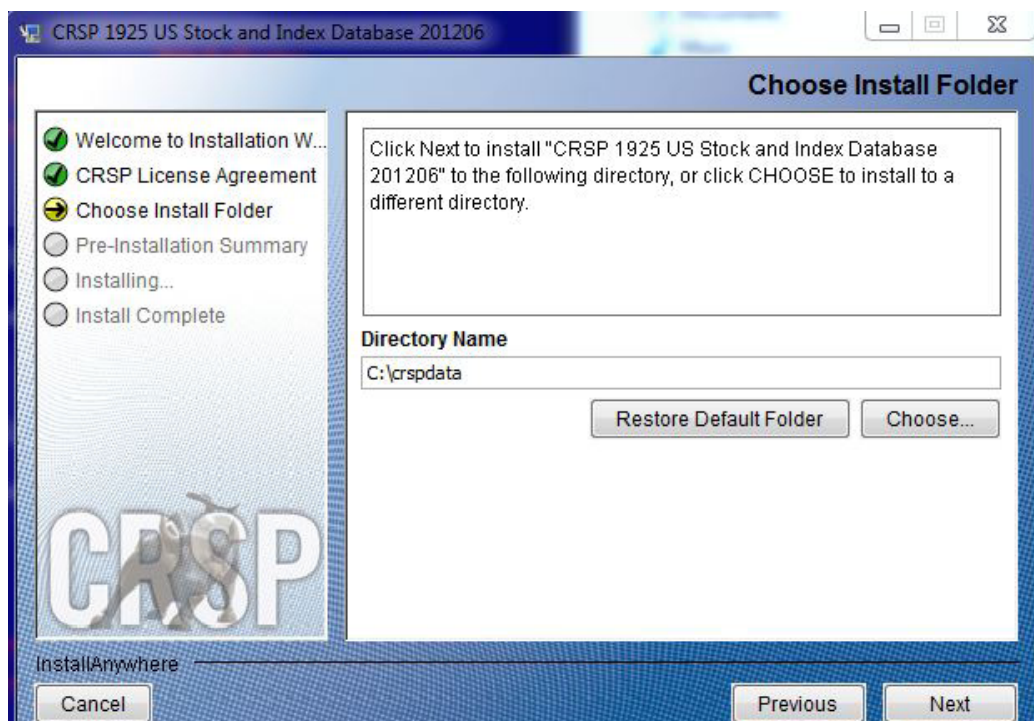


After clicking on **Next** on the Welcome screen, scroll through and read the CRSP Data and Utilities Agreement. Click to accept the terms of the license agreement. Click **Next**.

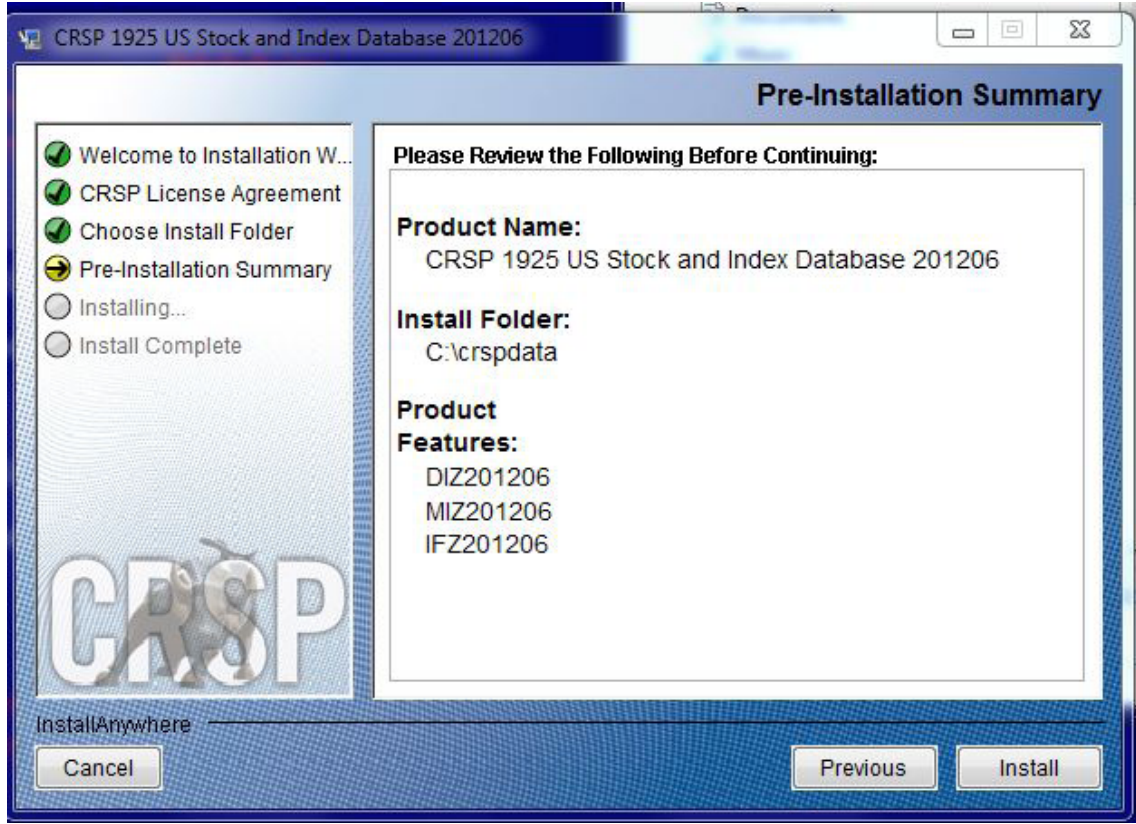


WINDOWS: The default directory for the data installation is `c:\crspdata`. You may accept or modify it. Click **Next**.

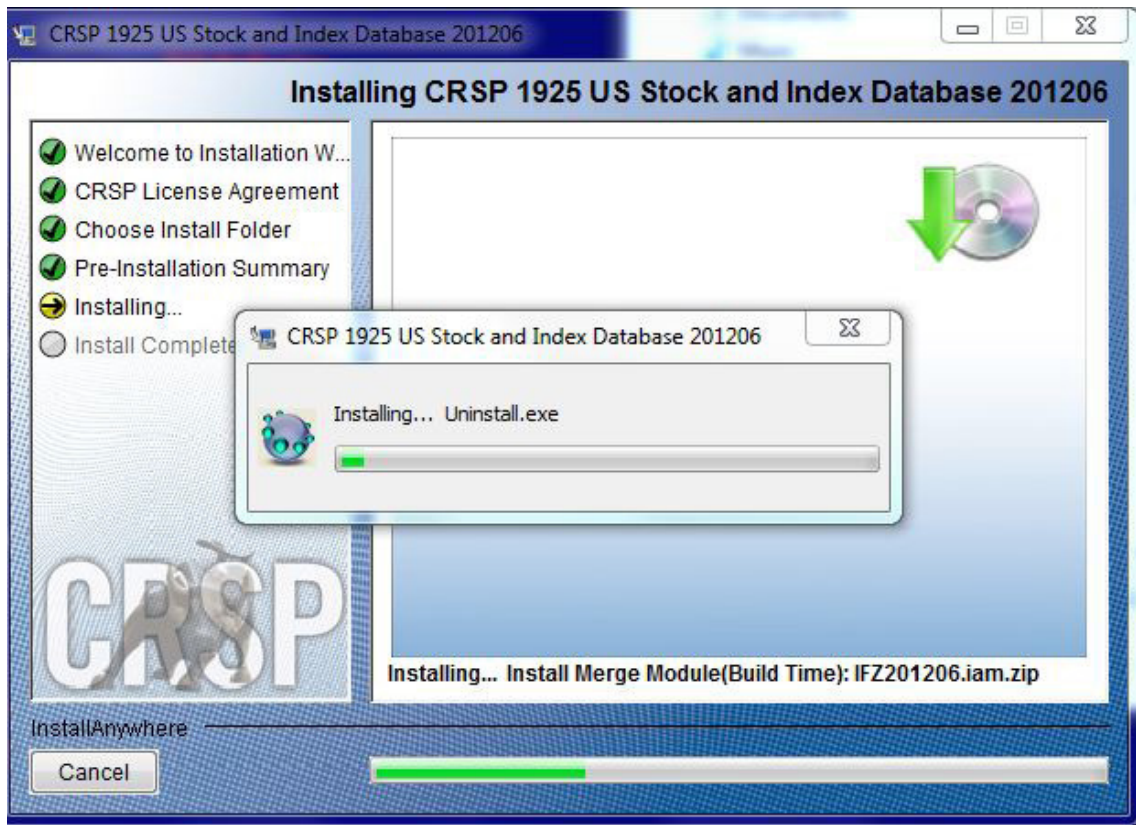
SUN SOLARIS & LINUX: The default directory for the data installation is `/crspdata`. You must have write permission to the directory you specify, for example, `/home/username/crspdata`.



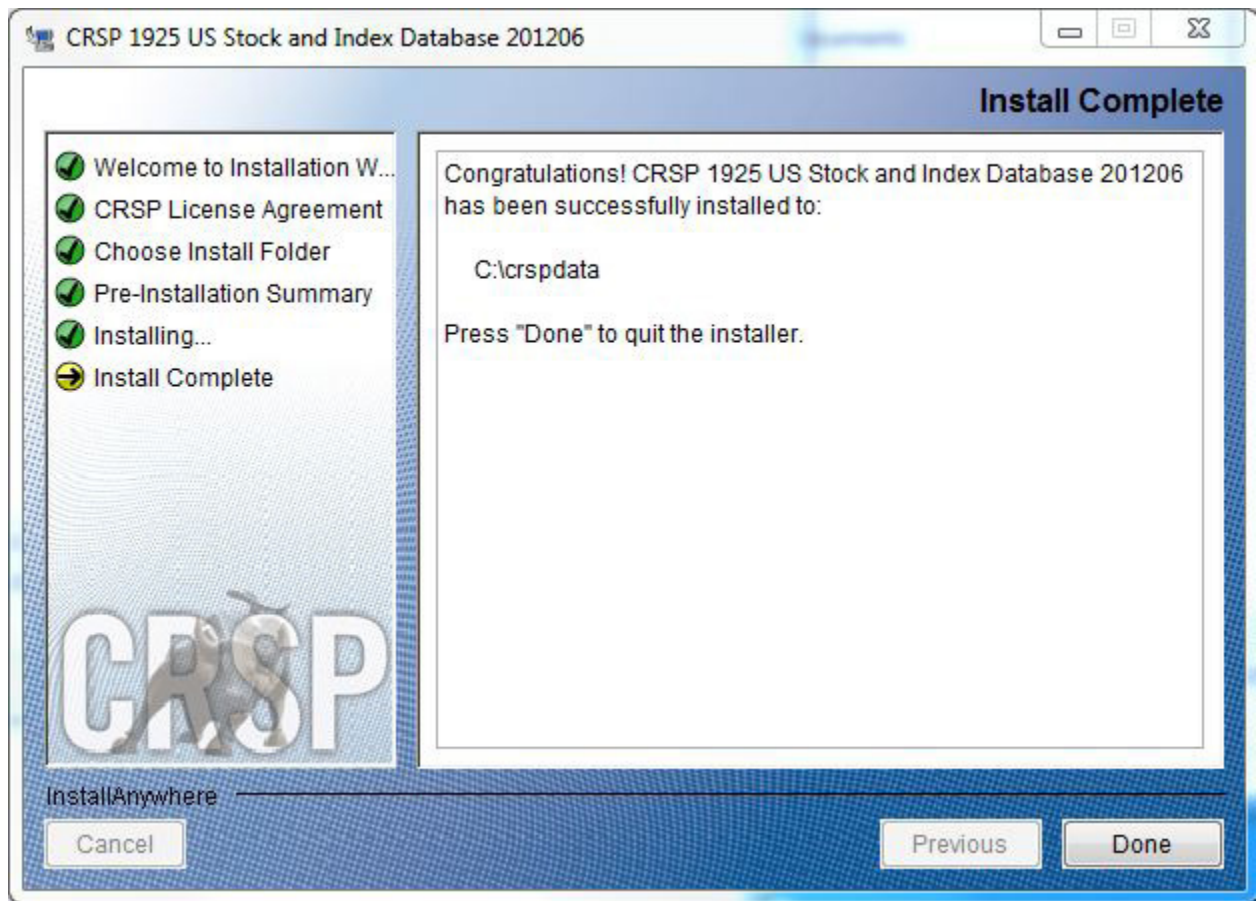
Summary information is displayed: Location, data components and the amount of space that is required for the data. Click on **Install** to proceed.



The screen will display the status of the installation.



A message indicating the success of the installation appears when the process is complete. Click **Done**.



LINUX AND SUN SOLARIS ENVIRONMENT VARIABLES

Important Change for Sun Solaris & Linux Installations:

Following previous installs, the `crsp.kshrc` file was run upon completion to set both environment variables and software alias values. This new version of InstallAnywhere sets the environment variables directly on the system when the software is installed. The `crsp.kshrc` file must still be run to set the aliases.

A user may wish to revert back to a previous cut of data or a previous version of the software. In order to do so, CRSP provides shell scripts for users to run that will create a custom-named `kshrc` file that the user may run to set environment variables at the session level. This process also provides a way for a system administrator to create a script that can be put into the system login process so that the environment variables are seen by all users.

To use a shell script for generating an initialization script file, follow these steps:

1. `cd` to the root directory where program files have been loaded.

```
cd accbin
```

2. If you are running `cs` shell, enter

```
source crsp_setup.csh
```

If you are running `ksh` or `bash` shell, enter

```
./ crsp_setup.sh
```


- 3. The script will prompt for data, root, and log directories. Follow the instructions on the prompts in terms of trailing slashes in directory names.

The script will create new scripts, `mycrsp.cshrc` in `csh` or `mycrsp.kshrc` in `ksh`. `mycrsp` is the default that may be changed.

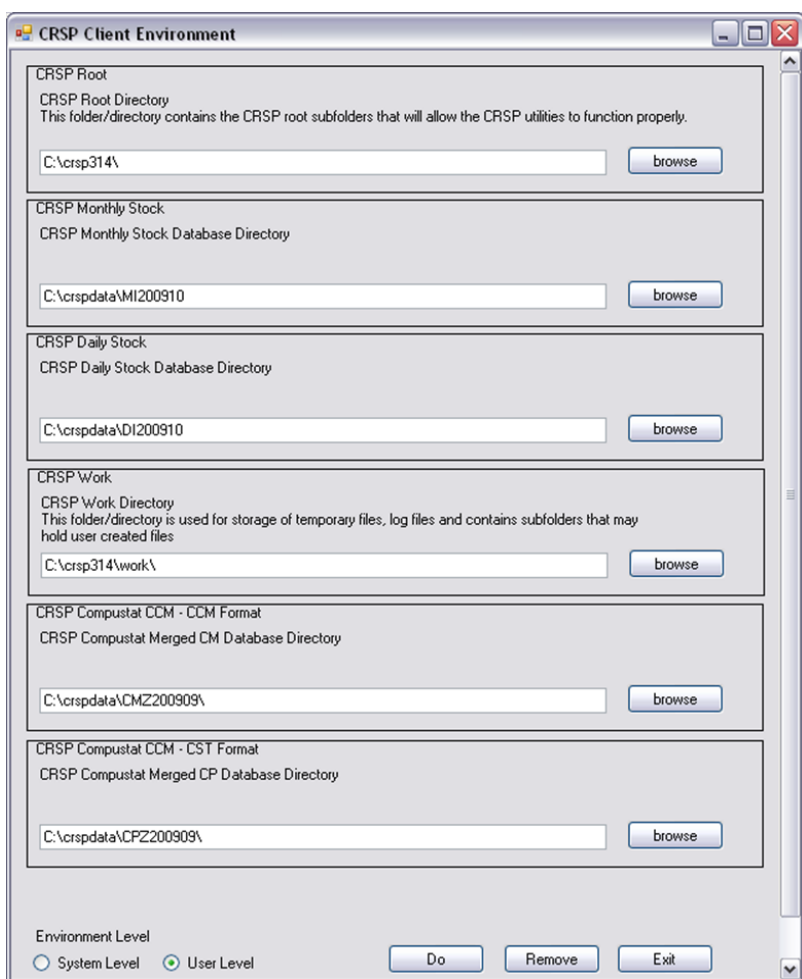
Note: When creating a custom `kshrc` file, be aware that it will overwrite a like-named file if one exists rather than create a new version. The `kshrc` file will overwrite all environment variables, so must be completely filled in.

`env | grep CRSP` can be used to check the CRSP environment variables set.

WINDOWS:

Location of the software and data may be checked by opening CRSP Client Environment from the CRSPAccess menu. This new utility provides users a quick and simple way of both checking and switching environment variables if necessary. Where, in the past, users had to go through the Control Panel to manipulate the environment variables, this can now be done by quick editing of the Client Environment screen.

Note: For subscribers of the CRSP Compustat Merged database, additional CCM database environments will be displayed for the location of the Compustat data.



UNINSTALL

To uninstall the data, go through Start > Control Panel > Add or Remove Programs. The data will appear in the Add or Remove Programs list as the volume label and cut date of the database. For example, the October cut of the 1925 US Stock and Index Database will be displayed as FIZ200910. Highlight your selection, click on the Change/Remove button and follow the prompts.