

# CRSP/COMPUSTAT MERGED DATABASE RELEASE NOTES

OCTOBER 2008 QUARTERLY UPDATE

## INTRODUCTION

These release notes accompany the October 2008 monthly cut of the CRSP/Compustat Merged Database in the CST format with which you are familiar. The CCM files are updated monthly based on Compustat's final research cuts and shipped monthly, quarterly or annually. Files are delivered on a single compressed CD-ROM and installed using an InstallShield wizard. Please refer to our website for CRSPAccess Release Notes for full product information and for Documents and Guides for all CRSP products at:

<http://www.crsp.ChicagoBooth.edu/documentation>

Within the first half of November, you will receive this same October cut, but in the new CCM format. New utilities will accompany the CMZ200810 database. Their installation is required if you wish to work with the new data. CRSP strongly urges all users to carefully read release notes and other referenced documents.

## ABOUT THE OCTOBER 2008 CRSP/COMPUSTAT MERGED DATABASE:

The Compustat cut date for this release is October 11, 2008. The database is shipped in its entirety with historical edits for restatements and corrections for each release.

The CD label for the CCM database is CPZ.

CPZ: CRSP Stock and Indices with Compustat data. PDE market data is for listed and research companies.

The database is delivered and supported on three platforms: Windows, Linux and Solaris. It has been tested and supported on CRSPAccess 2.97.

## PARAMETERS:

- The number of CRSP Securities in the CPZ database is 23,995.
- The number of GVKEYs in the CPZ database is 33,627.
- The number of links in the CPZ database is 55,624.
- Database size is approximately 2.41 Gb.

## CALENDARS

The CCM database utilizes the CRSP stock calendars to align properly with CRSP data. Data in the CRSP daily Stock (and Indices) file use daily and annual calendars. Data in the monthly files use monthly, quarterly and annual calendars.

Calendar	Date Range	Date Index Range
Daily trading calendar	19251231-20081010	1-21969
Monthly trading calendar	19251231-20121231	1-1045
Annual trading calendar	19251231-20091231	1-85
Quarterly trading calendar	19251231-20091231	1-337
Semi-Annual trading calendar	19251231-20091231	1-169
Weekly trading calendar	19260102-20081010	1-4319



CENTER FOR RESEARCH IN SECURITY PRICES

A Research Center at Chicago Booth

## DATA EDITS 200810

### GVKEY 11366 (WENDY'S INTERNATIONAL INC)

OLD:

LINKDT	LINKENDDT	PERMNO	PERMCO	LINKTYPE	LINKFLAG
19750101	19760608	0	0	NU	XXX
19760609	99999999	63060	4961	LU	BBB

NEW:

LINKDT	LINKENDDT	PERMNO	PERMCO	LINKTYPE	LINKFLAG
19750101	19760608	0	0	NR	XXX
19760609	20080929	63060	4961	LC	BBB

### GVKEY 3708 (WENDY'S/ARBY'S GROUP INC)

OLD:

LINKDT	LINKENDDT	PERMNO	PERMCO	LINKTYPE	LINKFLAG
19500101	19671103	19828	20550	LC	BBB
19671104	19760616	0	0	NU	XXX
19760617	20030904	19828	20550	LC	BBB
20030905	99999999	89818	20550	LC	BBB

NEW:

LINKDT	LINKENDDT	PERMNO	PERMCO	LINKTYPE	LINKFLAG
19500101	19671105	19828	20550	LC	BBB
19671106	19760616	0	0	NR	XXX
19760617	20030901	19828	20550	LC	BBB
20030902	20080929	89818	20550	LC	BBB
20080930	99999999	19828	20550	LC	BBB

### GVKEY 9351 (SAFECO CORP)

OLD:

LINKDT	LINKENDDT	PERMNO	PERMCO	LINKTYPE	LINKFLAG
19670131	19721213	0	0	NU	XXX
19721214	99999999	59440	3962	LU	BBB

NEW:

LINKDT	LINKENDDT	PERMNO	PERMCO	LINKTYPE	LINKFLAG
19670131	19721213	0	0	NR	XXX
19721214	20080922	59440	3962	LC	BBB

**GVKEY 65156 (CHOICEPOINT INC)**

OLD:

LINKDT	LINKENDDT	PERMNO	PERMCO	LINKTYPE	LINKFLAG
19920101	19970724	0	0	NU	XXX
19970725	99999999	85255	32051	LU	BBB

NEW:

LINKDT	LINKENDDT	PERMNO	PERMCO	LINKTYPE	LINKFLAG
19920101	19970807	0	0	NR	XXX
19970808	20080918	85255	32051	LC	BBB

**GVKEY 7862 (ENERGY EAST CORP)**

OLD:

LINKDT	LINKENDDT	PERMNO	PERMCO	LINKTYPE	LINKFLAG
19510101	99999999	24096	21278	LU	BBB

NEW:

LINKDT	LINKENDDT	PERMNO	PERMCO	LINKTYPE	LINKFLAG
19510101	20080916	24096	21278	LC	BBB

**GVKEY 15520 (SIGNET JEWELERS LTD)**

OLD:

LINKDT	LINKENDDT	PERMNO	PERMCO	LINKTYPE	LINKFLAG
19880201	19880712	0	0	NR	XXX
19880713	99999999	12076	9857	LC	BBB

NEW:

LINKDT	LINKENDDT	PERMNO	PERMCO	LINKTYPE	LINKFLAG
19880201	19880712	0	0	NR	XXX
19880713	20070418	12076	9857	LC	BBB
20070419	99999999	0	0	NR	XXX

**GVKEY 64831 (WESTSIDE ENERGY CORP)**

OLD:

LINKDT	LINKENDDT	PERMNO	PERMCO	LINKTYPE	LINKFLAG
19980430	20050601	0	0	NR	XXX
20050602	99999999	90777	46891	LC	BBB

NEW:

LINKDT	LINKENDDT	PERMNO	PERMCO	LINKTYPE	LINKFLAG
19980430	20040330	0	0	NR	XXX
20040331	20080626	90777	46891	LC	BBB

**GVKEY 174357 (CLAYMORE RAYMOND JAMES SB1)**

OLD:

LINKDT	LINKENDDT	PERMNO	PERMCO	LINKTYPE	LINKFLAG
20060519	99999999	91213	50693	LC	BBB

NEW:

LINKDT	LINKENDDT	PERMNO	PERMCO	LINKTYPE	LINKFLAG
20060519	20080903	91213	50693	LC	BBB
20080904	99999999	92792	51187	LC	BBB

**GVKEY 63986 (EPLUS INC)**

OLD:

LINKDT	LINKENDDT	PERMNO	PERMCO	LINKTYPE	LINKFLAG
19950401	19961114	0	0	NR	XXX
19961115	20070719	84234	15147	LC	BBB
20070720	99999999	0	0	NR	XXX

NEW:

LINKDT	LINKENDDT	PERMNO	PERMCO	LINKTYPE	LINKFLAG
19950401	19961114	0	0	NR	XXX
19961115	20070719	84234	15147	LC	BBB
20070720	20080902	0	0	NR	XXX
20080903	99999999	84234	15147	LC	BBB

**GVKEY 140857 (ISHARES S&P 100 INDEX FUND)**

OLD:

LINKDT	LINKENDDT	PERMNO	PERMCO	LINKTYPE	LINKFLAG
20030822	99999999	0	0	NR	XXX

NEW:

LINKDT	LINKENDDT	PERMNO	PERMCO	LINKTYPE	LINKFLAG
20001229	20080922	0	0	NR	XXX
20080923	99999999	92795	37493	LS	BBB

**GVKEY 162699 (GRAYMARK HEALTHCARE INC)**

OLD:

LINKDT	LINKENDDT	PERMNO	PERMCO	LINKTYPE	LINKFLAG
20080209	99999999	0	0	NR	XXX

NEW:

LINKDT	LINKENDDT	PERMNO	PERMCO	LINKTYPE	LINKFLAG
20050228	20080909	0	0	NR	XXX
20080910	99999999	92779	53081	LC	BBB

**GVKEY 180177 (PANSOFT CO LTD)**

OLD:

LINKDT	LINKENDDT	PERMNO	PERMCO	LINKTYPE	LINKFLAG
20080614	99999999	0	0	NR	XXX

NEW:

LINKDT	LINKENDDT	PERMNO	PERMCO	LINKTYPE	LINKFLAG
20080909	99999999	92788	53083	LC	BBB

**GVKEY 180646 (MYR GROUP INC)**

OLD:

LINKDT	LINKENDDT	PERMNO	PERMCO	LINKTYPE	LINKFLAG
20080913	99999999	0	0	NR	XXX

NEW:

LINKDT	LINKENDDT	PERMNO	PERMCO	LINKTYPE	LINKFLAG
20080829	20080908	0	0	NR	XXX
20080909	99999999	92782	53082	LC	BBB

**GVKEY 3933 (QUENTRA NETWORKS INC)**

OLD:

LINKDT	LINKENDDT	PERMNO	PERMCO	LINKTYPE	LINKFLAG
19631231	19671212	0	0	NR	XXX
19671213	19970310	45516	20579	LC	BBB
19970311	19981104	0	0	NR	XXX
19981105	20000930	86422	16309	LC	BBB

NEW:

LINKDT	LINKENDDT	PERMNO	PERMCO	LINKTYPE	LINKFLAG
19631231	19671212	0	0	NR	XXX
19671213	19970310	45516	20579	LC	BBB
19970311	19981104	0	0	NR	XXX
19981105	20001214	86422	16309	LC	BBB
20001215	99999999	0	0	NR	XXX

**GVKEY 5943 (INFO DESIGNS INC)**

OLD:

LINKDT	LINKENDDT	PERMNO	PERMCO	LINKTYPE	LINKFLAG
19800101	19830517	0	0	NU	XXX
19830518	19880930	44071	2352	LU	BBB

NEW:

LINKDT	LINKENDDT	PERMNO	PERMCO	LINKTYPE	LINKFLAG
19800101	19830517	0	0	NR	XXX
19830518	19890111	44071	2352	LC	BBB
19890112	99999999	0	0	NR	XXX

**GVKEY 6259 (JETRONIC INDUSTRIES INC)**

OLD:

LINKDT	LINKENDDT	PERMNO	PERMCO	LINKTYPE	LINKFLAG
19600101	19620701	0	0	NU	XXX
19620702	20040722	33267	21016	LU	BBB

NEW:

LINKDT	LINKENDDT	PERMNO	PERMCO	LINKTYPE	LINKFLAG
19600101	19620701	0	0	NR	XXX
19620702	20000517	33267	21016	LC	BBB
20000518	99999999	0	0	NR	XXX

**GVKEY 7114 (PANASONIC CORP)**

OLD:

LINKDT	LINKENDDT	PERMNO	PERMCO	LINKTYPE	LINKFLAG
19681201	19711212	0	0	NU	XXX
19711213	99999999	53727	21167	LU	BBB

NEW:

LINKDT	LINKENDDT	PERMNO	PERMCO	LINKTYPE	LINKFLAG
19681201	19711212	0	0	NR	XXX
19711213	99999999	53727	21167	LC	BBB

**GVKEY 8165 (OPTICAL SPECIALTIES INC)**

OLD:

LINKDT	LINKENDDT	PERMNO	PERMCO	LINKTYPE	LINKFLAG
19831001	19841217	0	0	NU	XXX
19841218	19901017	90713	7350	LU	BBB
19901018	19960630	0	0	NU	XXX

NEW:

LINKDT	LINKENDDT	PERMNO	PERMCO	LINKTYPE	LINKFLAG
19831001	19841217	0	0	NR	XXX
19841218	19901017	90713	7350	LC	BBB
19901018	99999999	0	0	NR	XXX

**GVKEY 9061 (HSBC USA INC)**

OLD:

LINKDT	LINKENDDT	PERMNO	PERMCO	LINKTYPE	LINKFLAG
19660101	19720111	0	0	NU	XXX
19720112	99999999	53938	21506	LU	BBB

NEW:

LINKDT	LINKENDDT	PERMNO	PERMCO	LINKTYPE	LINKFLAG
19660101	19720111	0	0	NR	XXX
19720112	19991230	53938	21506	LC	BBB
19991231	99999999	0	0	NR	XXX

**GVKEY 11936 (AMERICAN BIOMATERIALS CORP)**

OLD:

LINKDT	LINKENDDT	PERMNO	PERMCO	LINKTYPE	LINKFLAG
19811101	19860310	0	0	NU	XXX
19860311	19870709	10099	8041	LU	BBB

NEW:

LINKDT	LINKENDDT	PERMNO	PERMCO	LINKTYPE	LINKFLAG
19811101	19860310	0	0	NR	XXX
19860311	19870709	10099	8041	LC	BBB
19870710	99999999	0	0	NR	XXX

**GVKEY 12336 (ADVANCED INST MGMT SOFTWARE)**

OLD:

LINKDT	LINKENDDT	PERMNO	PERMCO	LINKTYPE	LINKFLAG
19810401	19851126	0	0	NU	XXX
19851127	19880331	85199	7881	LU	BBB

NEW:

LINKDT	LINKENDDT	PERMNO	PERMCO	LINKTYPE	LINKFLAG
19810401	19851126	0	0	NR	XXX
19851127	19890329	85199	7881	LC	BBB
19890330	99999999	0	0	NR	XXX

**GVKEY 12728 (TEECO PROPERTIES -LP)**

OLD:

LINKDT	LINKENDDT	PERMNO	PERMCO	LINKTYPE	LINKFLAG
19820101	19900112	74983	4529	LU	BBB
19900113	19971231	0	0	NU	XXX

NEW:

LINKDT	LINKENDDT	PERMNO	PERMCO	LINKTYPE	LINKFLAG
19820101	19900112	74983	4529	LC	BBB
19900113	99999999	0	0	NR	XXX

**GVKEY 12751 (CONSOLIDATED NRD RESOURCES)**

OLD:

LINKDT	LINKENDDT	PERMNO	PERMCO	LINKTYPE	LINKFLAG
19850131	19970930	78332	3245	LU	BBB

NEW:

LINKDT	LINKENDDT	PERMNO	PERMCO	LINKTYPE	LINKFLAG
19850131	19920115	78332	3245	LC	BBB
19920116	99999999	0	0	NR	XXX

**GVKEY 14256 (MAXIM INTEGRATED PRODUCTS)**

OLD:

LINKDT	LINKENDDT	PERMNO	PERMCO	LINKTYPE	LINKFLAG
19860701	19880228	0	0	NU	XXX
19880229	99999999	11896	9698	LU	BBB

NEW:

LINKDT	LINKENDDT	PERMNO	PERMCO	LINKTYPE	LINKFLAG
19860701	19880228	0	0	NR	XXX
19880229	20071001	11896	9698	LC	BBB
20071002	99999999	0	0	NR	XXX



**GVKEY 14579 (ALLIANCE BANCORPORATION)**

OLD:

LINKDT	LINKENDDT	PERMNO	PERMCO	LINKTYPE	LINKFLAG
19850101	19880215	0	0	NU	XXX
19880216	19890331	75250	25921	LU	BBB

NEW:

LINKDT	LINKENDDT	PERMNO	PERMCO	LINKTYPE	LINKFLAG
19850101	19880215	0	0	NR	XXX
19880216	19890420	75250	25921	LC	BBB
19890421	99999999	0	0	NR	XXX

**GVKEY 14862 (GULF EXPLORATION CONSULTANTS)**

OLD:

LINKDT	LINKENDDT	PERMNO	PERMCO	LINKTYPE	LINKFLAG
19870101	19881016	0	0	NU	XXX
19881017	19890623	12185	9940	LU	BBB
19890624	19970331	0	0	NU	XXX

NEW:

LINKDT	LINKENDDT	PERMNO	PERMCO	LINKTYPE	LINKFLAG
19870101	19881016	0	0	NR	XXX
19881017	19890623	12185	9940	LC	BBB
19890624	19890731	0	0	NR	XXX

**GVKEY 62746 (LASER STORM INC)**

OLD:

LINKDT	LINKENDDT	PERMNO	PERMCO	LINKTYPE	LINKFLAG
19940101	19960501	0	0	NU	XXX
19960502	19970930	83522	14546	LU	BBB

NEW:

LINKDT	LINKENDDT	PERMNO	PERMCO	LINKTYPE	LINKFLAG
19940101	19960501	0	0	NR	XXX
19960502	19980107	83522	14546	LC	BBB
19980108	99999999	0	0	NR	XXX

**DATA EDITS 200809****GVKEY 13102 (STRATEGIA CORP)**

OLD:

LINKDT	LINKENDDT	PERMNO	PERMCO	LINKTYPE	LINKFLAG
19850101	19960730	0	0	NU	XXX
19960731	20040219	85270	27834	LU	BBB

NEW:

LINKDT	LINKENDDT	PERMNO	PERMCO	LINKTYPE	LINKFLAG
19850101	19970805	0	0	NR	XXX
19970806	20001019	85270	27834	LC	BBB
20001020	99999999	0	0	NR	XXX

**GVKEY 14340 (EDCI HOLDINGS INC)**

OLD:

LINKDT	LINKENDDT	PERMNO	PERMCO	LINKTYPE	LINKFLAG
19870101	19880316	0	0	NU	XXX
19880317	99999999	11908	9721	LU	BBB

NEW:

LINKDT	LINKENDDT	PERMNO	PERMCO	LINKTYPE	LINKFLAG
19870101	19880316	0	0	NR	XXX
19880317	99999999	11908	9721	LC	BBB

**GVKEY 15520 (SIGNET JEWELERS LTD)**

OLD:

LINKDT	LINKENDDT	PERMNO	PERMCO	LINKTYPE	LINKFLAG
19880201	19880712	0	0	NU	XXX
19880713	99999999	12076	9857	LU	BBB

NEW:

LINKDT	LINKENDDT	PERMNO	PERMCO	LINKTYPE	LINKFLAG
19880201	19880712	0	0	NR	XXX
19880713	99999999	12076	9857	LC	BBB

**GVKEY 19311 (PANACO INC)**

OLD:

LINKDT	LINKENDDT	PERMNO	PERMCO	LINKTYPE	LINKFLAG
19890921	19990912	78718	10305	LC	BBB
19990913	20000925	0	0	NR	XXX
20000926	20020806	78718	10305	LC	BBB
20020807	20060622	0	0	NR	XXX

NEW:

LINKDT	LINKENDDT	PERMNO	PERMCO	LINKTYPE	LINKFLAG
19890921	19990912	78718	10305	LC	BBB
19990913	20000925	0	0	NR	XXX
20000926	20020716	78718	10305	LC	BBB
20020717	99999999	0	0	NR	XXX

**GVKEY 23146 (COHO ENERGY INC)**

OLD:

LINKDT	LINKENDDT	PERMNO	PERMCO	LINKTYPE	LINKFLAG
19880101	19900725	0	0	NU	XXX
19900726	19990305	76232	10697	LU	BBB
19990306	20060222	0	0	NU	XXX

NEW:

LINKDT	LINKENDDT	PERMNO	PERMCO	LINKTYPE	LINKFLAG
19880101	19900725	0	0	NR	XXX
19900726	19990305	76232	10697	LC	BBB
19990306	99999999	0	0	NR	XXX

**GVKEY 24776 (PERFUMANIA HOLDINGS INC)**

OLD:

LINKDT	LINKENDDT	PERMNO	PERMCO	LINKTYPE	LINKFLAG
19890201	19911218	0	0	NU	XXX
19911219	99999999	77186	11266	LU	BBB

NEW:

LINKDT	LINKENDDT	PERMNO	PERMCO	LINKTYPE	LINKFLAG
19890201	19911218	0	0	NR	XXX
19911219	99999999	77186	11266	LC	BBB

**GVKEY 26061 (IAC/INTERACTIVECORP)**

OLD:

LINKDT	LINKENDDT	PERMNO	PERMCO	LINKTYPE	LINKFLAG
19910901	19930118	0	0	NU	XXX
19930119	99999999	78840	11901	LU	BBB

NEW:

LINKDT	LINKENDDT	PERMNO	PERMCO	LINKTYPE	LINKFLAG
19910901	19930118	0	0	NR	XXX
19930119	99999999	78840	11901	LC	BBB

**GVKEY 29063 (VORTEX RESOURCES CORP)**

OLD:

LINKDT	LINKENDDT	PERMNO	PERMCO	LINKTYPE	LINKFLAG
19930101	19930728	0	0	NU	XXX
19930729	99999999	79393	12310	LU	BBB

NEW:

LINKDT	LINKENDDT	PERMNO	PERMCO	LINKTYPE	LINKFLAG
19930101	19930728	0	0	NR	XXX
19930729	20080613	79393	12310	LC	BBB
20080614	99999999	0	0	NR	XXX

**GVKEY 29389 (SIMON PROPERTY GROUP INC)**

OLD:

LINKDT	LINKENDDT	PERMNO	PERMCO	LINKTYPE	LINKFLAG
19900101	19931213	0	0	NU	XXX
19931214	99999999	80100	30086	LU	BBB

NEW:

LINKDT	LINKENDDT	PERMNO	PERMCO	LINKTYPE	LINKFLAG
19900101	19931213	0	0	NU	XXX
19931214	99999999	80100	30086	LC	BBB

**GVKEY 63531 (MICROVISION INC)**

OLD:

LINKDT	LINKENDDT	PERMNO	PERMCO	LINKTYPE	LINKFLAG
19950101	19960826	0	0	NU	XXX
19960827	99999999	83885	14931	LU	BBB

NEW:

LINKDT	LINKENDDT	PERMNO	PERMCO	LINKTYPE	LINKFLAG
19950101	19960826	0	0	NR	XXX
19960827	99999999	83885	14931	LC	BBB

**GVKEY 63682 (SELECT SOFTWARE TOOLS -ADR)**

OLD:

LINKDT	LINKENDDT	PERMNO	PERMCO	LINKTYPE	LINKFLAG
19950101	19960930	0	0	NU	XXX
19961001	19990528	84123	15002	LU	BBB
19990529	20001116	0	0	NU	XXX

NEW:

LINKDT	LINKENDDT	PERMNO	PERMCO	LINKTYPE	LINKFLAG
19950101	19960930	0	0	NR	XXX
19961001	19990528	84123	15002	LC	BBB
19990529	99999999	0	0	NR	XXX

**GVKEY 114829 (EASTERN LIGHT CAPITAL INC)**

OLD:

LINKDT	LINKENDDT	PERMNO	PERMCO	LINKTYPE	LINKFLAG
19981001	99999999	86367	34880	LU	BBB

NEW:

LINKDT	LINKENDDT	PERMNO	PERMCO	LINKTYPE	LINKFLAG
19981001	99999999	86367	34880	LC	BBB

**GVKEY 124934 (ADSTAR INC)**

OLD:

LINKDT	LINKENDDT	PERMNO	PERMCO	LINKTYPE	LINKFLAG
19970101	20000117	0	0	NR	XXX
20000118	99999999	87557	17523	LC	BBB

NEW:

LINKDT	LINKENDDT	PERMNO	PERMCO	LINKTYPE	LINKFLAG
19970101	20000117	0	0	NR	XXX
20000118	20080326	87557	17523	LC	BBB
20080327	99999999	0	0	NR	XXX

**GVKEY 180466 (JOHN BEAN TECHNOLOGIES)**

OLD:

LINKDT	LINKENDDT	PERMNO	PERMCO	LINKTYPE	LINKFLAG
20080809	99999999	0	0	NR	XXX

NEW:

LINKDT	LINKENDDT	PERMNO	PERMCO	LINKTYPE	LINKFLAG
20080801	99999999	92729	53050	LC	BBB

**GVKEY 63057 (UNIFY CORP)**

OLD:

LINKDT	LINKENDDT	PERMNO	PERMCO	LINKTYPE	LINKFLAG
19950501	19960613	0	0	NR	XXX
19960614	20000728	83704	14724	LC	BBB
20000729	99999999	0	0	NR	XXX

NEW:

LINKDT	LINKENDDT	PERMNO	PERMCO	LINKTYPE	LINKFLAG
19950501	19960613	0	0	NR	XXX
19960614	20000730	83704	14724	LC	BBB
20000731	20080824	0	0	NR	XXX
20080825	99999999	83704	14724	LC	BBB

**GVKEY 5074 (ELECTRONIC DATA SYSTEMS CORP)**

OLD:

LINKDT	LINKENDDT	PERMNO	PERMCO	LINKTYPE	LINKFLAG
19670131	19710302	0	0	NU	XXX
19710303	19841018	52070	25225	LC	BBB
19841019	19960609	66931	20799	LS	BBB
19960610	99999999	83596	31660	LU	BBB

NEW:

LINKDT	LINKENDDT	PERMNO	PERMCO	LINKTYPE	LINKFLAG
19670131	19710302	0	0	NR	XXX
19710303	19841018	52070	25225	LC	BBB
19841019	19960609	66931	20799	LS	BBB
19960610	20080825	83596	31660	LC	BBB

**GVKEY 140569 (W-H ENERGY SERVICES INC)**

OLD:

LINKDT	LINKENDDT	PERMNO	PERMCO	LINKTYPE	LINKFLAG
20001011	99999999	88748	40218	LC	BBB

NEW:

LINKDT	LINKENDDT	PERMNO	PERMCO	LINKTYPE	LINKFLAG
20001011	20080818	88748	40218	LC	BBB

**GVKEY 9772 (SMITH INTERNATIONAL INC)**

OLD:

LINKDT	LINKENDDT	PERMNO	PERMCO	LINKTYPE	LINKFLAG
19580101	19680225	0	0	NU	XXX
19680226	99999999	45794	21627	LU	BBB

NEW:

LINKDT	LINKENDDT	PERMNO	PERMCO	LINKTYPE	LINKFLAG
19580101	19680225	0	0	NR	XXX
19680226	99999999	45794	21627	LC	BBB

**GVKEY 1655 (ANGELICA CORP)**

OLD:

LINKDT	LINKENDDT	PERMNO	PERMCO	LINKTYPE	LINKFLAG
19590801	19680109	0	0	NU	XXX
19680110	20080805	45583	20199	LU	BBB

NEW:

LINKDT	LINKENDDT	PERMNO	PERMCO	LINKTYPE	LINKFLAG
19590801	19680109	0	0	NR	XXX
19680110	20080804	45583	20199	LC	BBB

**GVKEY 114829 (EASTERN LIGHT CAPITAL INC)**

OLD:

LINKDT	LINKENDDT	PERMNO	PERMCO	LINKTYPE	LINKFLAG
19981001	99999999	86367	34880	LU	BBB

NEW:

LINKDT	LINKENDDT	PERMNO	PERMCO	LINKTYPE	LINKFLAG
19981001	99999999	86367	34880	LC	BBB

**GVKEY 1111 (ACTIVISION INC)**

OLD:

LINKDT	LINKENDDT	PERMNO	PERMCO	LINKTYPE	LINKFLAG
19820129	19830608	0	0	NR	XXX
19830609	19910328	10701	6060	LC	BBB
19910329	19931021	0	0	NR	XXX
19931022	20080710	79678	12499	LC	BBB

NEW:

LINKDT	LINKENDDT	PERMNO	PERMCO	LINKTYPE	LINKFLAG
19820129	19830608	0	0	NR	XXX
19830609	19910328	10701	6060	LC	BBB
19910329	19931021	0	0	NR	XXX
19931022	20080709	79678	12499	LC	BBB

**GVKEY 61414 (SONUS PHARMACEUTICALS INC)**

OLD:

LINKDT	LINKENDDT	PERMNO	PERMCO	LINKTYPE	LINKFLAG
19940101	19951011	0	0	NU	XXX
19951012	99999999	82526	14043	LU	BBB

NEW:

LINKDT	LINKENDDT	PERMNO	PERMCO	LINKTYPE	LINKFLAG
19940101	19951011	0	0	NR	XXX
19951012	20080820	82526	14043	LC	BBB

**GVKEY 6185 (IRVINE SENSORS CORP)**

OLD:

LINKDT	LINKENDDT	PERMNO	PERMCO	LINKTYPE	LINKFLAG
19810101	19821114	0	0	NU	XXX
19821115	99999999	45955	5645	LU	BBB

NEW:

LINKDT	LINKENDDT	PERMNO	PERMCO	LINKTYPE	LINKFLAG
19810101	19821114	0	0	NR	XXX
19821115	99999999	45955	5645	LC	BBB

**GVKEY 6532 (LTX-CREDENCE CORP)**

OLD:

LINKDT	LINKENDDT	PERMNO	PERMCO	LINKTYPE	LINKFLAG
19800801	19820201	0	0	NU	XXX
19820202	99999999	48291	5292	LU	BBB

NEW:

LINKDT	LINKENDDT	PERMNO	PERMCO	LINKTYPE	LINKFLAG
19800801	19820201	0	0	NR	XXX
19820202	99999999	48291	5292	LC	BBB

**GVKEY 7469 (ZARLINK SEMICONDUCTOR INC)**

OLD:

LINKDT	LINKENDDT	PERMNO	PERMCO	LINKTYPE	LINKFLAG
19780301	19810517	0	0	NU	XXX
19810518	99999999	62949	21210	LU	BBB

NEW:

LINKDT	LINKENDDT	PERMNO	PERMCO	LINKTYPE	LINKFLAG
19780301	19810517	0	0	NR	XXX
19810518	20080728	62949	21210	LC	BBB
20080729	99999999	0	0	NR	XXX



**GVKEY 7652 (NEC CORP)**

OLD:

LINKDT	LINKENDDT	PERMNO	PERMCO	LINKTYPE	LINKFLAG
19750401	20080618	55782	3196	LU	BBB

NEW:

LINKDT	LINKENDDT	PERMNO	PERMCO	LINKTYPE	LINKFLAG
19750401	20070926	55782	3196	LC	BBB

**GVKEY 7761 (NPC INTERNATIONAL INC)**

OLD:

LINKDT	LINKENDDT	PERMNO	PERMCO	LINKTYPE	LINKFLAG
19830401	19840813	0	0	NU	XXX
19840814	20011115	56630	7184	LC	BBB

NEW:

LINKDT	LINKENDDT	PERMNO	PERMCO	LINKTYPE	LINKFLAG
19830401	19840813	0	0	NR	XXX
19840814	20010831	56630	7184	LC	BBB
20010901	99999999	0	0	NR	XXX

**GVKEY 8423 (PMFG INC)**

OLD:

LINKDT	LINKENDDT	PERMNO	PERMCO	LINKTYPE	LINKFLAG
19700701	19721213	0	0	NU	XXX
19721214	99999999	61787	3610	LU	BBB

NEW:

LINKDT	LINKENDDT	PERMNO	PERMCO	LINKTYPE	LINKFLAG
19700701	19721213	0	0	NR	XXX
19721214	99999999	61787	3610	LC	BBB

**GVKEY 12763 (RADIATION DISPOSAL SYSTEMS)**

OLD:

LINKDT	LINKENDDT	PERMNO	PERMCO	LINKTYPE	LINKFLAG
19850101	19850613	0	0	NU	XXX
19850614	19910425	91353	7599	LU	BBB
19910426	19950930	0	0	NU	XXX

NEW:

LINKDT	LINKENDDT	PERMNO	PERMCO	LINKTYPE	LINKFLAG
19850101	19850613	0	0	NR	XXX
19850614	19910425	91353	7599	LC	BBB
19910426	99999999	0	0	NR	XXX

## DATA EDITS 200808

A small number of GVKEYs were inadvertently missing from the Compustat Xpressfeed files used to create this September cut of the CRSP\Compustat Merged Database. These GVKEYs will be present again in the full history production of the database that will be cut in September and shipped in early October. The following GVKEYs are missing:

005417	Hudson United Bancorp
001458	American Fletcher Corp
001524	American National Corp - Delaware
001556	American Security Corp
001842	Atlantic Bancorporation
001998	Bank One Corp
001999	Bancal Tri-State Corp
002003	BancOhio Corp
002004	BancOklahoma Corp
002014	BankBoston Corp
002017	Bank of New England Corp
002021	Bank South Corp
004764	FleetBoston Financial Corp
004796	Florida National Banks of Florida
005324	Greater Jersey Bancorp
005591	Heritage Bancorporation
005619	Hibernia Corp – Class A
005702	Horizon Bancorp
011856	BB&T Corp
015582	Bank of Nova Scotia
114737	Citigroup Inc – Pro Forma
136204	Polyone Corp – Pro Forma
136224	Intl Paper Co – Pro Forma
137190	Devon Energy Corp – Pro Forma
137450	WPP Corp PLC – Pro Forma
141296	FleetBoston Financial – Pro Forma
141297	Microchip Tech – Pro Forma
160213	GSI Technology Inc
165075	Stealthgas Inc

### GVKEY 4839 (FORD MOTOR CO)

OLD:

LINKDT	LINKENDDT	PERMNO	PERMCO	LINKTYPE	LINKFLAG
19500101	19560328	0	0	NR	XXX
19560329	20000802	25785	20750	LC	BBB
20000803	20000808	0	0	NR	XXX
20000809	99999999	88394	20750	LC	BBB

NEW:

LINKDT	LINKENDDT	PERMNO	PERMCO	LINKTYPE	LINKFLAG
19500101	19560306	0	0	NR	XXX
19560307	99999999	25785	20750	LC	BBB

**GVKEY 3105 (CLEAR CHANNEL COMMUNICATIONS)**

OLD:

LINKDT	LINKENDDT	PERMNO	PERMCO	LINKTYPE	LINKFLAG
19830101	19840418	0	0	NU	XXX
19840419	99999999	24046	6996	LU	BBB

NEW:

LINKDT	LINKENDDT	PERMNO	PERMCO	LINKTYPE	LINKFLAG
19830101	19840418	0	0	NR	XXX
19840419	20080730	24046	6996	LC	BBB

**GVKEY 11056 (AQUILA INC)**

OLD:

LINKDT	LINKENDDT	PERMNO	PERMCO	LINKTYPE	LINKFLAG
19580930	99999999	26606	21848	LU	BBB

NEW:

LINKDT	LINKENDDT	PERMNO	PERMCO	LINKTYPE	LINKFLAG
19620131	20080714	26606	21848	LC	BBB

**GVKEY 6334 (GREAT PLAINS ENERGY INC)**

OLD:

LINKDT	LINKENDDT	PERMNO	PERMCO	LINKTYPE	LINKFLAG
19510101	99999999	24432	21032	LU	BBB

NEW:

LINKDT	LINKENDDT	PERMNO	PERMCO	LINKTYPE	LINKFLAG
19620131	99999999	24432	21032	LC	BBB

**GVKEY 1111 (ACTIVISION INC)**

OLD:

LINKDT	LINKENDDT	PERMNO	PERMCO	LINKTYPE	LINKFLAG
19820129	19830608	0	0	NU	XXX
19830609	19910328	10701	6060	LU	BBB
19910329	19931021	0	0	NU	XXX
19931022	20080710	79678	12499	LU	BBB

NEW:

LINKDT	LINKENDDT	PERMNO	PERMCO	LINKTYPE	LINKFLAG
19820129	19830608	0	0	NR	XXX
19830609	19910328	10701	6060	LC	BBB
19910329	19931021	0	0	NR	XXX
19931022	20080710	79678	12499	LC	BBB

**GVKEY 180405 (ACTIVISION BLIZZARD INC)**

OLD:

LINKDT	LINKENDDT	PERMNO	PERMCO	LINKTYPE	LINKFLAG
20080712	99999999	0	0	NR	XXX

NEW:

LINKDT	LINKENDDT	PERMNO	PERMCO	LINKTYPE	LINKFLAG
20080710	99999999	79678	12499	LC	BBB

**GVKEY 63196 (GETTY IMAGES INC)**

OLD:

LINKDT	LINKENDDT	PERMNO	PERMCO	LINKTYPE	LINKFLAG
19950101	19960701	0	0	NR	XXX
19960702	19980210	83757	14790	LC	BBB
19980211	20080703	85824	15963	LC	BBB

NEW:

LINKDT	LINKENDDT	PERMNO	PERMCO	LINKTYPE	LINKFLAG
19950101	19960701	0	0	NR	XXX
19960702	19980210	83757	14790	LC	BBB
19980211	20080702	85824	15963	LC	BBB

**GVKEY 180272 (LENDER PROCESSING SERVICES)**

OLD:

LINKDT	LINKENDDT	PERMNO	PERMCO	LINKTYPE	LINKFLAG
20080712	99999999	0	0	NR	XXX

NEW:

LINKDT	LINKENDDT	PERMNO	PERMCO	LINKTYPE	LINKFLAG
20080630	20080702	0	0	NR	XXX
20080703	99999999	92697	53037	LC	BBB

**GVKEY 64323 (SCPIE HOLDINGS INC)**

OLD:

LINKDT	LINKENDDT	PERMNO	PERMCO	LINKTYPE	LINKFLAG
19910101	19970129	0	0	NU	XXX
19970130	20080701	84395	31904	LU	BBB

NEW:

LINKDT	LINKENDDT	PERMNO	PERMCO	LINKTYPE	LINKFLAG
19910101	19970129	0	0	NR	XXX
19970130	20080630	84395	31904	LC	BBB

**GVKEY 3555 (COUNTRYWIDE FINANCIAL CORP)**

OLD:

LINKDT	LINKENDDT	PERMNO	PERMCO	LINKTYPE	LINKFLAG
19740301	19750130	0	0	NU	XXX
19750131	20080701	64565	796	LU	BBB

NEW:

LINKDT	LINKENDDT	PERMNO	PERMCO	LINKTYPE	LINKFLAG
19740301	19790329	0	0	NR	XXX
19790330	20080630	64565	796	LC	BBB

**GVKEY 7647 (BANK OF AMERICA CORP)**

OLD:

LINKDT	LINKENDDT	PERMNO	PERMCO	LINKTYPE	LINKFLAG
19580101	19721213	0	0	NR	XXX
19721214	99999999	59408	3151	LC	BBB

NEW:

LINKDT	LINKENDDT	PERMNO	PERMCO	LINKTYPE	LINKFLAG
19580101	19721228	0	0	NR	XXX
19721229	99999999	59408	3151	LC	BBB

**GVKEY 14285 (BENTLEY PHARMACEUTICALS)**

OLD:

LINKDT	LINKENDDT	PERMNO	PERMCO	LINKTYPE	LINKFLAG
19860701	19880201	0	0	NU	XXX
19880202	99999999	10574	9674	LU	BBB

NEW:

LINKDT	LINKENDDT	PERMNO	PERMCO	LINKTYPE	LINKFLAG
19860701	19880201	0	0	NR	XXX
19880202	20080722	10574	9674	LC	BBB

**GVKEY 25216 (MEDQUIST INC)**

OLD:

LINKDT	LINKENDDT	PERMNO	PERMCO	LINKTYPE	LINKFLAG
19910101	19920504	0	0	NU	XXX
19920505	20070418	77575	11501	LU	BBB
20070419	99999999	0	0	NU	XXX

NEW:

LINKDT	LINKENDDT	PERMNO	PERMCO	LINKTYPE	LINKFLAG
19910101	19920504	0	0	NR	XXX
19920505	20040615	77575	11501	LC	BBB
20040616	20080716	0	0	NR	XXX
20080717	99999999	77575	11501	LC	BBB

**GVKEY 4364 (CENTRUM INDUSTRIES INC)**

OLD:

LINKDT	LINKENDDT	PERMNO	PERMCO	LINKTYPE	LINKFLAG
19800401	19810331	0	0	NU	XXX
19810401	19920723	32716	3980	LU	BBB
19920724	20020221	0	0	NU	XXX

NEW:

LINKDT	LINKENDDT	PERMNO	PERMCO	LINKTYPE	LINKFLAG
19800401	19810331	0	0	NR	XXX
19810401	19920723	32716	3980	LC	BBB
19920724	99999999	0	0	NR	XXX

**GVKEY 8438 (PENN PACIFIC CORP)**

OLD:

LINKDT	LINKENDDT	PERMNO	PERMCO	LINKTYPE	LINKFLAG
19781001	19910121	61947	3644	LU	BBB
19910122	19951231	0	0	NU	XXX

NEW:

LINKDT	LINKENDDT	PERMNO	PERMCO	LINKTYPE	LINKFLAG
19781031	19860402	61947	3644	LC	BBB
19860403	19861112	0	0	NR	XXX
19861113	19910121	61947	3644	LC	BBB
19910122	99999999	0	0	NR	XXX

**GVKEY 13531 (HANCOCK FABRICS INC)**

OLD:

LINKDT	LINKENDDT	PERMNO	PERMCO	LINKTYPE	LINKFLAG
19860201	19870521	0	0	NU	XXX
19870522	99999999	75066	20872	LU	BBB

NEW:

LINKDT	LINKENDDT	PERMNO	PERMCO	LINKTYPE	LINKFLAG
19860201	19870521	0	0	NR	XXX
19870522	20070321	75066	20872	LC	BBB
20070322	20080808	0	0	NR	XXX

**GVKEY 16436 (CABLE & WIRELESS PLC)**

OLD:

LINKDT	LINKENDDT	PERMNO	PERMCO	LINKTYPE	LINKFLAG
19880401	19890926	0	0	NU	XXX
19890927	20060518	75807	22103	LU	BBB

NEW:

LINKDT	LINKENDDT	PERMNO	PERMCO	LINKTYPE	LINKFLAG
19880401	19890926	0	0	NR	XXX
19890927	20051213	75807	22103	LC	BBB
20051214	99999999	0	0	NR	XXX

**GVKEY 19387 (SOUTHERN PACIFIC PETROLEUM)**

OLD:

LINKDT	LINKENDDT	PERMNO	PERMCO	LINKTYPE	LINKFLAG
19910101	20060720	71571	4222	LU	BBB

NEW:

LINKDT	LINKENDDT	PERMNO	PERMCO	LINKTYPE	LINKFLAG
19820129	20031121	71571	4222	LC	BBB
20031122	99999999	0	0	NR	XXX

**GVKEY 23197 (ZOOM TECHNOLOGIES INC)**

OLD:

LINKDT	LINKENDDT	PERMNO	PERMCO	LINKTYPE	LINKFLAG
19891229	19900926	0	0	NU	XXX
19900927	99999999	77011	10759	LU	BBB

NEW:

LINKDT	LINKENDDT	PERMNO	PERMCO	LINKTYPE	LINKFLAG
19890101	19900926	0	0	NR	XXX
19900927	99999999	77011	10759	LC	BBB

**GVKEY 28386 (EZCHIP SEMICONDUCTOR LTD)**

OLD:

LINKDT	LINKENDDT	PERMNO	PERMCO	LINKTYPE	LINKFLAG
19910131	19921118	0	0	NU	XXX
19921119	99999999	78168	11808	LU	BBB

NEW:

LINKDT	LINKENDDT	PERMNO	PERMCO	LINKTYPE	LINKFLAG
19910101	19921118	0	0	NR	XXX
19921119	99999999	78168	11808	LC	BBB

**GVKEY 30662 (SIRIUS XM RADIO INC)**

OLD:

LINKDT	LINKENDDT	PERMNO	PERMCO	LINKTYPE	LINKFLAG
19930101	19940912	0	0	NU	XXX
19940913	99999999	80924	13304	LU	BBB

NEW:

LINKDT	LINKENDDT	PERMNO	PERMCO	LINKTYPE	LINKFLAG
19930101	19940912	0	0	NR	XXX
19940913	99999999	80924	13304	LC	BBB

**GVKEY 30903 (VOXEL)**

OLD:

LINKDT	LINKENDDT	PERMNO	PERMCO	LINKTYPE	LINKFLAG
19890101	19941031	0	0	NU	XXX
19941101	19980331	81117	13405	LU	BBB

NEW:

LINKDT	LINKENDDT	PERMNO	PERMCO	LINKTYPE	LINKFLAG
19890101	19941031	0	0	NR	XXX
19941101	19980901	81117	13405	LC	BBB
19980902	99999999	0	0	NR	XXX

**GVKEY 62403 (FLETCHER BUILDING LTD)**

OLD:

LINKDT	LINKENDDT	PERMNO	PERMCO	LINKTYPE	LINKFLAG
19940701	19960313	0	0	NU	XXX
19960314	20010322	83205	31597	LC	BBB
20010323	20020613	88923	41366	LC	BBB
20020614	20030630	0	0	NR	XXX

NEW:

LINKDT	LINKENDDT	PERMNO	PERMCO	LINKTYPE	LINKFLAG
19940701	19960324	0	0	NR	XXX
19960325	20010322	83205	31597	LC	BBB
20010323	20010402	0	0	NR	XXX
20010403	20020613	88923	41366	LC	BBB
20020614	99999999	0	0	NR	XXX



**GVKEY 102704 (UNITED UTILITIES GROUP PLC)**

OLD:

LINKDT	LINKENDDT	PERMNO	PERMCO	LINKTYPE	LINKFLAG
19980129	99999999	85777	34642	LU	BBB

NEW:

LINKDT	LINKENDDT	PERMNO	PERMCO	LINKTYPE	LINKFLAG
19980129	20070622	85777	34642	LC	BBB
20070623	99999999	0	0	NR	XXX

**GVKEY 127234 (CELERA CORP)**

OLD:

LINKDT	LINKENDDT	PERMNO	PERMCO	LINKTYPE	LINKFLAG
19990506	99999999	86806	21387	LS	BBB

NEW:

LINKDT	LINKENDDT	PERMNO	PERMCO	LINKTYPE	LINKFLAG
19990430	20080630	0	0	NR	XXX
20080701	99999999	92750	53057	LC	BBB

**GVKEY 16641 (AMERICA FIRST TAX EX IVS -LP)**

OLD:

LINKDT	LINKENDDT	PERMNO	PERMCO	LINKTYPE	LINKFLAG
19860131	99999999	0	0	NU	XXX

NEW:

LINKDT	LINKENDDT	PERMNO	PERMCO	LINKTYPE	LINKFLAG
19860430	20080630	0	0	NR	XXX
20080701	99999999	92726	30985	LC	BBB

**GVKEY 25681 (CHINA INSONLINE CORP)**

OLD:

LINKDT	LINKENDDT	PERMNO	PERMCO	LINKTYPE	LINKFLAG
19910101	19920819	0	0	NR	XXX
19920820	20001023	77865	11678	LC	BBB
20001024	99999999	0	0	NR	XXX

NEW:

LINKDT	LINKENDDT	PERMNO	PERMCO	LINKTYPE	LINKFLAG
19910101	19920819	0	0	NR	XXX
19920820	20001023	77865	11678	LC	BBB
20001024	20080630	0	0	NR	XXX
20080701	99999999	77865	11678	LC	BBB

**GVKEY 177895 (GT SOLAR INTL INC)**

OLD:

LINKDT	LINKENDDT	PERMNO	PERMCO	LINKTYPE	LINKFLAG
20040401	99999999	0	0	NR	XXX

NEW:

LINKDT	LINKENDDT	PERMNO	PERMCO	LINKTYPE	LINKFLAG
20080724	99999999	92758	53062	LC	BBB

**GVKEY 179738 (ENERGY RECOVERY INC)**

OLD:

LINKDT	LINKENDDT	PERMNO	PERMCO	LINKTYPE	LINKFLAG
20080412	99999999	0	0	NR	XXX

NEW:

LINKDT	LINKENDDT	PERMNO	PERMCO	LINKTYPE	LINKFLAG
20080702	99999999	92753	53059	LC	BBB

**DATA EDITS 200807****GVKEY 158053 (NEW YORK MORTGAGE TRUST INC)**

OLD:

LINKDT	LINKENDDT	PERMNO	PERMCO	LINKTYPE	LINKFLAG
19990101	20040623	0	0	NR	XXX
20040624	20070910	90214	45287	LC	BBB
20070911	99999999	0	0	NR	XXX

NEW:

LINKDT	LINKENDDT	PERMNO	PERMCO	LINKTYPE	LINKFLAG
19990101	20040623	0	0	NR	XXX
20040624	20070910	90214	45287	LC	BBB
20070911	20080604	0	0	NR	XXX
20080605	99999999	90214	45287	LC	BBB

**GVKEY 6081 (NAVISTAR INTERNATIONAL CORP)**

OLD:

LINKDT	LINKENDDT	PERMNO	PERMCO	LINKTYPE	LINKFLAG
19491101	20070418	12503	21265	LU	BBB
20070419	99999999	0	0	NU	XXX

NEW:

LINKDT	LINKENDDT	PERMNO	PERMCO	LINKTYPE	LINKFLAG
19491101	20070213	12503	21265	LC	BBB
20070214	20080629	0	0	NR	XXX
20080630	99999999	12503	21265	LC	BBB

**GVKEY 145416 (SERACARE LIFE SCIENCES INC)**

OLD:

LINKDT	LINKENDDT	PERMNO	PERMCO	LINKTYPE	LINKFLAG
19970301	20020218	0	0	NR	XXX
20020219	20060314	89312	42787	LC	BBB
20060315	99999999	0	0	NR	XXX

NEW:

LINKDT	LINKENDDT	PERMNO	PERMCO	LINKTYPE	LINKFLAG
19970301	20020218	0	0	NR	XXX
20020219	20060314	89312	42787	LC	BBB
20060315	20080622	0	0	NR	XXX
20080623	99999999	89312	42787	LC	BBB

**GVKEY 180181 (TELMEX INTERNACIONAL SAB DE)**

OLD:

LINKDT	LINKENDDT	PERMNO	PERMCO	LINKTYPE	LINKFLAG
20080614	99999999	0	0	NR	XXX

NEW:

LINKDT	LINKENDDT	PERMNO	PERMCO	LINKTYPE	LINKFLAG
20080611	99999999	92710	53040	LC	BBB

**GVKEY 19625 (TELMEX-TELEFONOS DE MEXICO)**

OLD:

LINKDT	LINKENDDT	PERMNO	PERMCO	LINKTYPE	LINKFLAG
19900101	19910513	0	0	NU	XXX
19910514	99999999	76636	4428	LU	BBB

NEW:

LINKDT	LINKENDDT	PERMNO	PERMCO	LINKTYPE	LINKFLAG
19900101	19910513	0	0	NR	XXX
19910514	99999999	76636	4428	LC	BBB

**GVKEY 1567 (TRANE INC)**

OLD:

LINKDT	LINKENDDT	PERMNO	PERMCO	LINKTYPE	LINKFLAG
19500101	19880701	10372	22187	LC	BBB
19880702	19950202	0	0	NR	XXX
19950203	20080606	81285	30847	LC	BBB

NEW:

LINKDT	LINKENDDT	PERMNO	PERMCO	LINKTYPE	LINKFLAG
19500101	19880701	10372	22187	LC	BBB
19880702	19950202	0	0	NR	XXX
19950203	20080605	81285	30847	LC	BBB

**GVKEY 5959 (INGERSOLL-RAND CO LTD)**

OLD:

LINKDT	LINKENDDT	PERMNO	PERMCO	LINKTYPE	LINKFLAG
19500101	99999999	12431	20977	LU	BBB

NEW:

LINKDT	LINKENDDT	PERMNO	PERMCO	LINKTYPE	LINKFLAG
19500101	99999999	12431	20977	LC	BBB

**GVKEY 29492 (COMMERCE GROUP INC/MA)**

OLD:

LINKDT	LINKENDDT	PERMNO	PERMCO	LINKTYPE	LINKFLAG
19900101	19931227	0	0	NU	XXX
19931228	20080605	79956	12733	LU	BBB

NEW:

LINKDT	LINKENDDT	PERMNO	PERMCO	LINKTYPE	LINKFLAG
19900101	19931227	0	0	NR	XXX
19931228	20080604	79956	12733	LC	BBB

**GVKEY 11818 (BEAR STEARNS COMPANIES INC)**

OLD:

LINKDT	LINKENDDT	PERMNO	PERMCO	LINKTYPE	LINKFLAG
19840501	19851028	0	0	NU	XXX
19851029	20080602	68304	20282	LU	BBB

NEW:

LINKDT	LINKENDDT	PERMNO	PERMCO	LINKTYPE	LINKFLAG
19840501	19851028	0	0	NR	XXX
19851029	20080530	68304	20282	LC	BBB

**GVKEY 1491 (AMERICAN ISRAELI PAPER MILLS)**

OLD:

LINKDT	LINKENDDT	PERMNO	PERMCO	LINKTYPE	LINKFLAG
19600401	19620701	0	0	NU	XXX
19620702	99999999	29014	20089	LU	BBB

NEW:

LINKDT	LINKENDDT	PERMNO	PERMCO	LINKTYPE	LINKFLAG
19600401	19620701	0	0	NR	XXX
19620702	99999999	29014	20089	LC	BBB

**GVKEY 2521 (REUNION INDUSTRIES INC)**

OLD:

LINKDT	LINKENDDT	PERMNO	PERMCO	LINKTYPE	LINKFLAG
19630101	19931028	0	0	NU	XXX
19931029	99999999	79732	12517	LU	BBB

NEW:

LINKDT	LINKENDDT	PERMNO	PERMCO	LINKTYPE	LINKFLAG
19630101	19931028	0	0	NR	XXX
19931029	20070413	79732	12517	LC	BBB
20070414	99999999	0	0	NR	XXX

**GVKEY 8979 (REAL ESTATE INVEST/CA)**

OLD:

LINKDT	LINKENDDT	PERMNO	PERMCO	LINKTYPE	LINKFLAG
19820101	19840822	0	0	NU	XXX
19840823	19951231	65905	7196	LU	BBB

NEW:

LINKDT	LINKENDDT	PERMNO	PERMCO	LINKTYPE	LINKFLAG
19820101	19840822	0	0	NR	XXX
19840823	19960315	65905	7196	LC	BBB
19960316	99999999	0	0	NR	XXX

**GVKEY 9398 (WALL STREET DELI INC)**

OLD:

LINKDT	LINKENDDT	PERMNO	PERMCO	LINKTYPE	LINKFLAG
19810701	19820927	0	0	NU	XXX
19820928	20030424	68743	5633	LU	BBB

NEW:

LINKDT	LINKENDDT	PERMNO	PERMCO	LINKTYPE	LINKFLAG
19810701	19820927	0	0	NR	XXX
19820928	20010129	68743	5633	LC	BBB
20010130	99999999	0	0	NR	XXX

**GVKEY 13238 (QUADLOGIC CONTROLS CORP)**

OLD:

LINKDT	LINKENDDT	PERMNO	PERMCO	LINKTYPE	LINKFLAG
19840301	19870916	0	0	NU	XXX
19870917	19890831	11688	9113	LU	BBB

NEW:

LINKDT	LINKENDDT	PERMNO	PERMCO	LINKTYPE	LINKFLAG
19840301	19870916	0	0	NR	XXX
19870917	19900110	11688	9113	LC	BBB
19900111	99999999	0	0	NR	XXX

**GVKEY 14365 (MILLENNIA INC)**

OLD:

LINKDT	LINKENDDT	PERMNO	PERMCO	LINKTYPE	LINKFLAG
19850701	19880428	0	0	NU	XXX
19880429	19980331	11934	9382	LU	BBB

NEW:

LINKDT	LINKENDDT	PERMNO	PERMCO	LINKTYPE	LINKFLAG
19850701	19880428	0	0	NR	XXX
19880429	19980612	11934	9382	LC	BBB
19980613	99999999	0	0	NR	XXX

**GVKEY 15659 (TOKIO MARINE HOLDINGS INC)**

OLD:

LINKDT	LINKENDDT	PERMNO	PERMCO	LINKTYPE	LINKFLAG
19820401	99999999	76428	4466	LU	BBB

NEW:

LINKDT	LINKENDDT	PERMNO	PERMCO	LINKTYPE	LINKFLAG
19820401	20070725	76428	4466	LC	BBB
20070726	99999999	0	0	NR	XXX

**GVKEY 16878 (FREMONT GENERAL CORP)**

OLD:

LINKDT	LINKENDDT	PERMNO	PERMCO	LINKTYPE	LINKFLAG
19830101	99999999	37699	1830	LU	BBB

NEW:

LINKDT	LINKENDDT	PERMNO	PERMCO	LINKTYPE	LINKFLAG
19830101	20080416	37699	1830	LC	BBB
20080417	99999999	0	0	NR	XXX

**GVKEY 61192 (CRAFT BREWERS ALLIANCE INC)**

OLD:

LINKDT	LINKENDDT	PERMNO	PERMCO	LINKTYPE	LINKFLAG
19940101	19950816	0	0	NU	XXX
19950817	99999999	82176	13945	LU	BBB

NEW:

LINKDT	LINKENDDT	PERMNO	PERMCO	LINKTYPE	LINKFLAG
19940101	19950816	0	0	NR	XXX
19950817	99999999	82176	13945	LC	BBB

**GVKEY 64020 (VU1 CORP)**

OLD:

LINKDT	LINKENDDT	PERMNO	PERMCO	LINKTYPE	LINKFLAG
19920101	19961120	0	0	NU	XXX
19961121	19980122	84270	15166	LU	BBB
19980123	20040923	0	0	NU	XXX

NEW:

LINKDT	LINKENDDT	PERMNO	PERMCO	LINKTYPE	LINKFLAG
19920101	19961120	0	0	NR	XXX
19961121	19980122	84270	15166	LC	BBB
19980123	99999999	0	0	NR	XXX

## DATA INSTALLATION

Instructions and screen shots for installation are written for Windows. Differences related to Linux and Sun arenoted.

### WINDOWS:

To install data, insert your CD into the drive and from the Start Menu, select Run `d:\setupwin32.exe`. Click OK.

### SUN SOLARIS:

After inserting the CD, a terminal will open with the file, `setupsolaris.bin`. Double click on this setup file to begin the installation process.

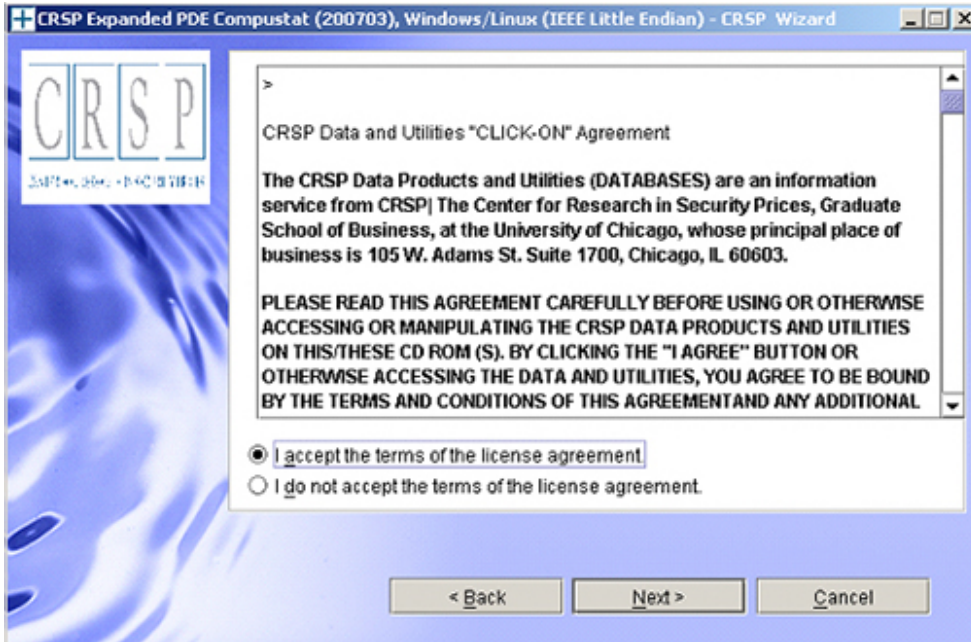
### LINUX:

Upon insertion of the CD, a terminal will open with the file, `setuplinux.bin`. Double click on this setup file and open a terminal to begin the installation process.





After you have clicked **Next** on the Welcome screen, scroll through and read the CRSP Data and Utilities Agreement. Click to accept the terms of the license agreement, and assuming you do, click **Next**.

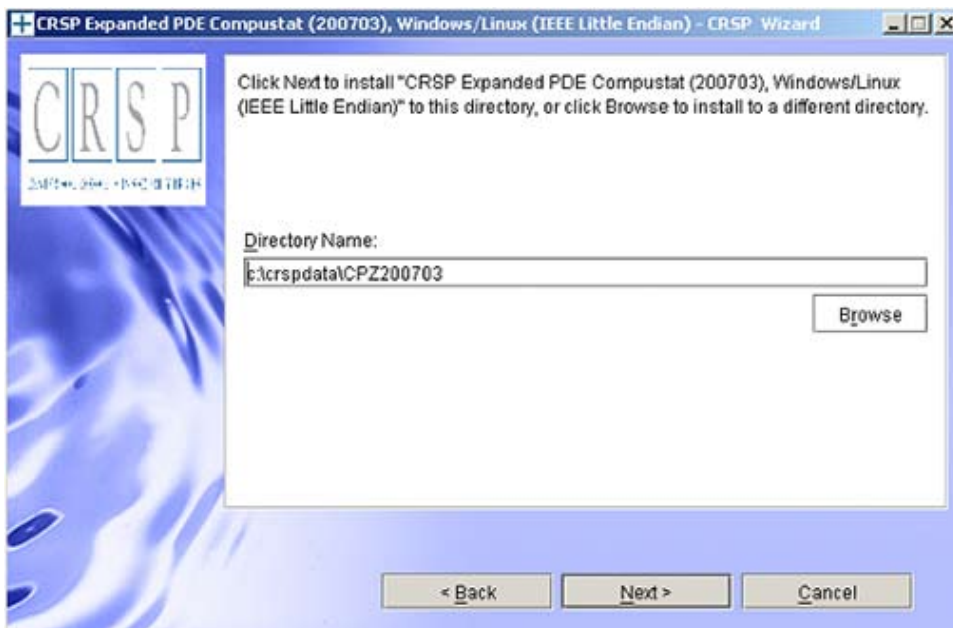


#### WINDOWS:

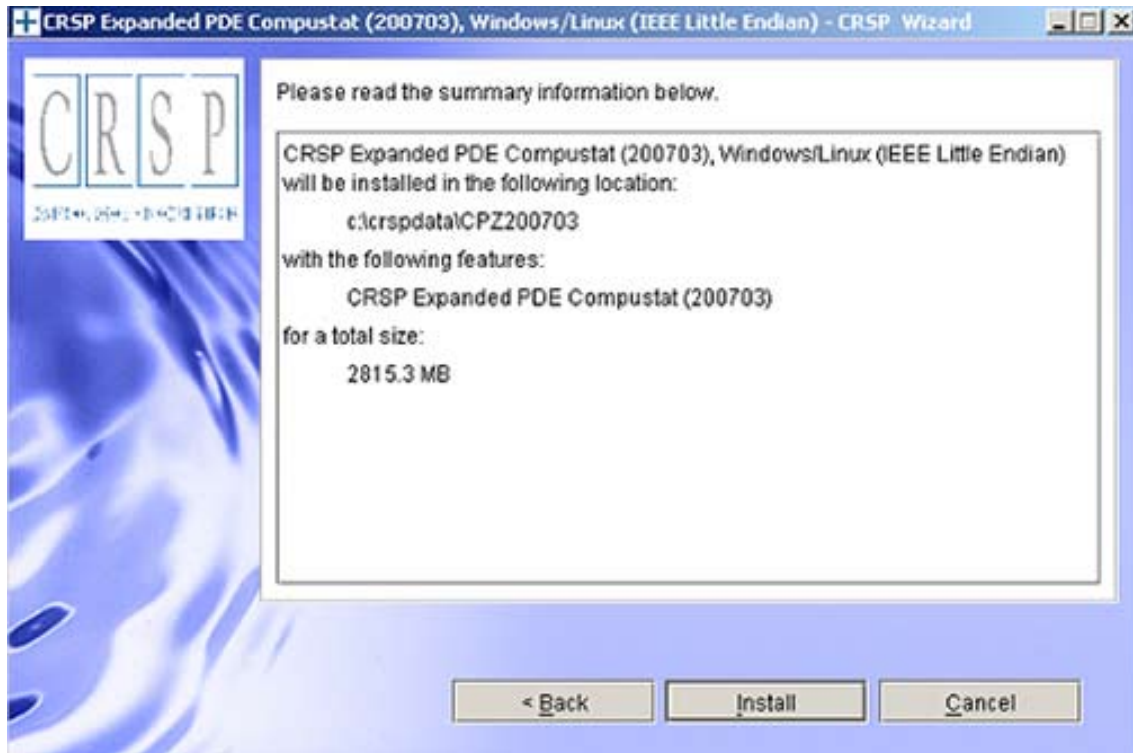
The default directory for the data installation is `c:\crspdata\cczyyyymm`. You may accept or modify it. Click **Next**. **Note: InstallShield does not verify available space. Please see the database parameters on page 1 for space required for installation.**

#### SUN SOLARIS & LINUX:

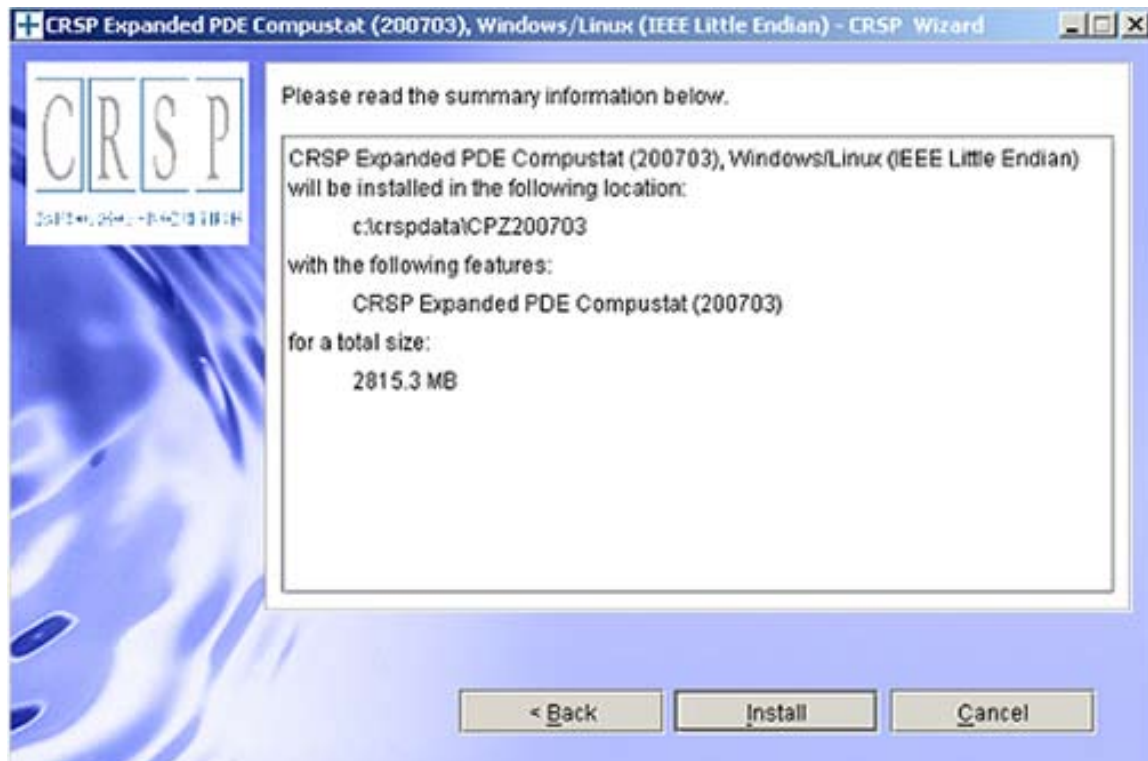
The default directory for the data installation is `/crspdata`. You must have write permission to the directory you specify, for example, `/home/username/crspdata`. **Note: InstallShield does not verify available space. Please see the database parameters on page 1 for space required for installation.**



Summary information is displayed: Location, data components and the amount of space that is required for the data. Click on **Install** to proceed.



The screen will display the status of your installation.



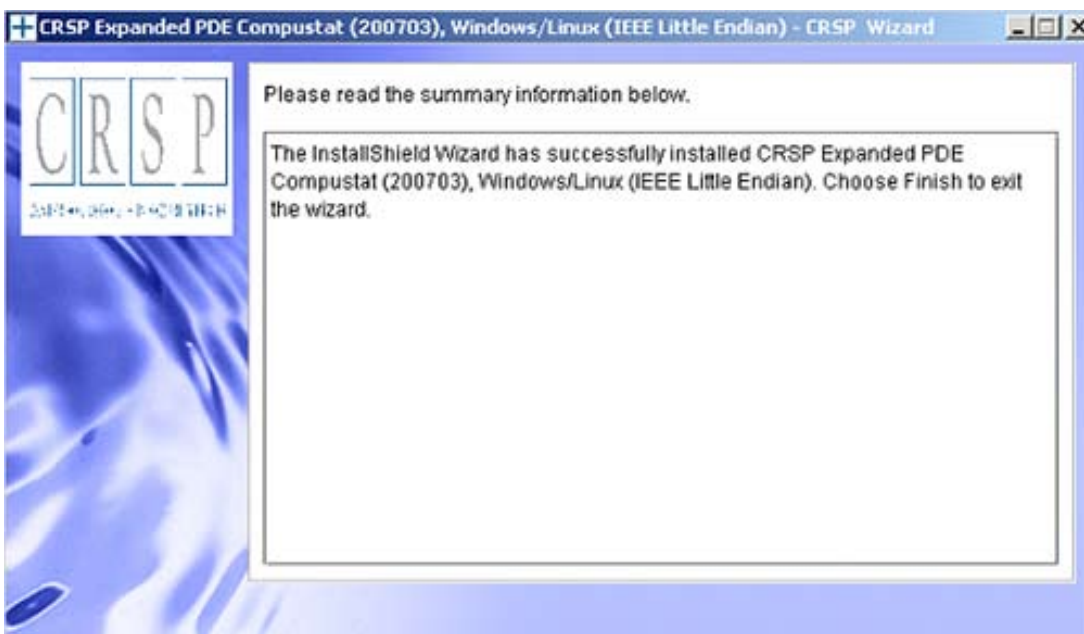
## SUN SOLARIS & LINUX:

After clicking Finish, a file named `crsp.kshrc` must be run to set the local environment variable for the database. At the prompt, type:

```
>. ./crsp.kshrc <enter>
```

**Note:** If you are not using `ksh`, modifications will be necessary. Check with your Unix administrator.

A message indicating the success of the installation appears when the process is complete. Click **Finish**.



## WINDOWS:

Location of the software and data may be checked by opening **CRSP Client Environment** from the CRSPAccess menu. This new utility provides users a quick and simple way of both checking and switching environment variables if necessary. Where, in the past, users had to go through the Control Panel to manipulate the environment variables, this can now be done by quick editing of the Client Environment screen.

The screenshot shows a window titled "CRSPAccess Client Environment" with five sections, each containing a label, a description, a text input field with a path, and a "Browse" button.

- CRSP Root**  
CRSP Root Directory  
This folder/directory contains the CRSP root subfolders that will allow the CRSP utilities to function properly.  
Path: N:\crsroot294\
- CRSP Monthly Stock**  
CRSP Monthly Stock Database Directory  
Path: c:\crspdata\MIZ200611\
- CRSP Daily Stock**  
CRSP Daily Stock Database Directory  
Path: c:\crspdata\DIZ200611\
- CRSP Work**  
CRSP Work Directory  
This folder/directory is used for storage of temporary files, log files and contains subfolders that may hold user created files  
Path: C:\CRSP\work\
- CRSP Compustat CCM**  
CRSP Compustat Merged Database Directory  
Path: c:\crspdata\CPZ200703\

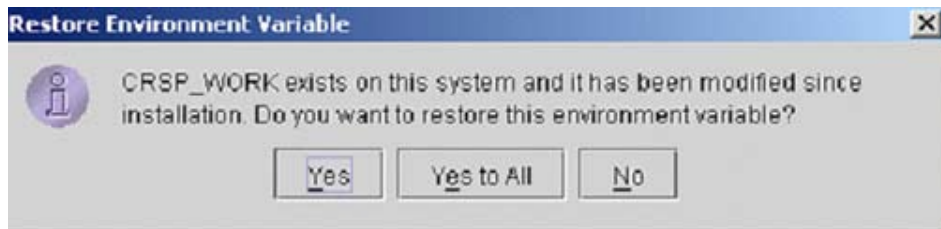
At the bottom of the window are three buttons: **Do**, **Remove**, and **Exit**.

## UNINSTALL

For each data install, an uninstall is created on the CRSPAccess menu. Data uninstalls do not touch software. Likewise, software uninstalls do not touch data. Each uninstall is done separately. As with the install, the uninstall is wizard-driven. When installation of either software or data is complete, users may be prompted with an option to either reboot the computer or wait until later.

### Uninstall & CRSP Client Environment

Each time a path is modified in client environment, the action is recorded. Upon running `uninstall`, a *Restore Environment Variable* prompt will appear:



This prompt appears for each variable for each modification. Answer each prompt and continue cycling through. **Yes** is the default, which will restore environment variables back to what they were prior to the install.