

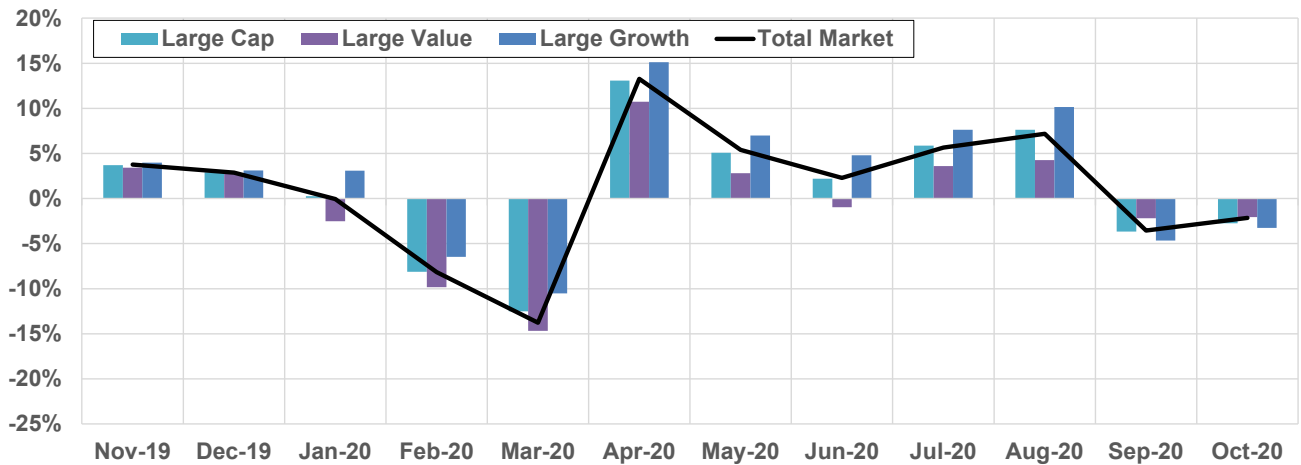


**CRSP<sup>®</sup> INDEXES**  
**US MARKET UPDATE**  
OCTOBER 2020

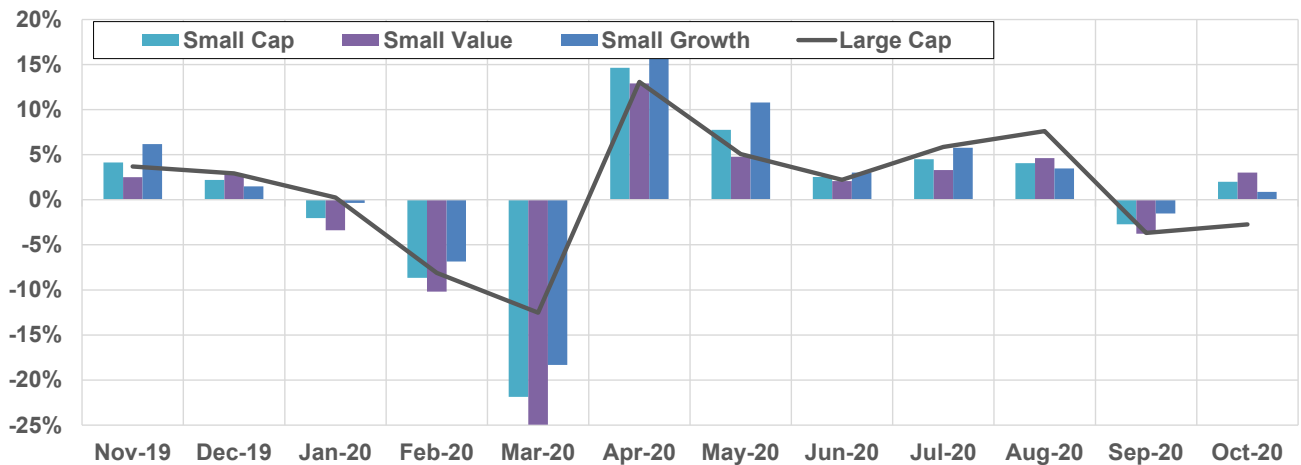
**CRSP<sup>®</sup>** | CENTER FOR RESEARCH  
IN SECURITY PRICES, LLC  
An Affiliate of the University of Chicago Booth School of Business

# U.S. MARKET FOR THE PAST 12 MONTHS

## LARGE CAP MONTHLY RETURNS



## SMALL CAP MONTHLY RETURNS



## SECTOR INDEXES MONTHLY RETURNS

	Nov-19	Dec-19	Jan-20	Feb-20	Mar-20	Apr-20	May-20	Jun-20	Jul-20	Aug-20	Sep-20	Oct-20
Technology	5.33%	4.17%	4.08%	-6.84%	-9.18%	14.82%	7.50%	6.57%	6.44%	11.48%	-5.76%	-1.94%
Telecom	-3.50%	1.87%	-0.78%	2.45%	-7.63%	7.73%	3.47%	3.42%	5.57%	3.38%	-1.62%	-3.22%
Health Care	5.97%	3.54%	-2.61%	-5.92%	-5.17%	13.84%	4.26%	-1.80%	5.16%	2.48%	-1.26%	-2.97%
Financials	3.43%	2.14%	-0.80%	-9.84%	-20.92%	9.88%	3.29%	0.70%	3.28%	3.91%	-3.93%	0.75%
Real Estate	-1.64%	0.54%	1.44%	-6.92%	-18.52%	8.54%	1.92%	2.15%	4.12%	0.65%	-2.28%	-3.22%
Consumer Discretionary	3.08%	1.44%	0.10%	-7.73%	-12.83%	16.99%	5.12%	2.88%	8.87%	11.94%	-3.70%	-2.77%
Consumer Staples	1.61%	3.82%	0.77%	-8.30%	-12.34%	10.87%	5.09%	2.97%	5.99%	3.74%	-2.09%	-2.94%
Industrials	4.73%	0.71%	-0.46%	-8.57%	-17.75%	11.17%	7.19%	2.44%	4.31%	8.11%	-1.80%	-2.86%
Basic Materials	3.71%	3.29%	-7.73%	-9.10%	-16.11%	17.21%	7.60%	2.49%	7.39%	4.28%	-1.40%	-1.47%
Energy	1.28%	7.28%	-11.67%	-14.62%	-36.26%	31.69%	1.96%	-0.66%	-3.91%	0.50%	-13.82%	-3.14%
Utilities	-1.96%	3.42%	6.33%	-9.93%	-10.12%	3.29%	4.36%	-4.88%	7.06%	-1.94%	0.70%	3.43%

Note: Data as of 10/30/2020; monthly total returns are used; CRSP US Sector Indexes monthly total returns are for constrained indexes, meaning that securities' weights within sector indexes are adjusted to comply with IRS Regulated Investment Company rules; CRSP U.S. Sector Indexes based on Enhanced FTSE ICB® (EICB) methodology are used for returns after 6/30/2020; CRSP U.S. Sector Indexes based on FTSE ICB® methodology are used for returns prior to 6/30/2020. For more details on pairing between EICB-based and ICB-based CRSP U.S. Sector Indexes refer to our [white paper](#) and [public announcement](#).

# CRSP U.S. INDEXES PERFORMANCE

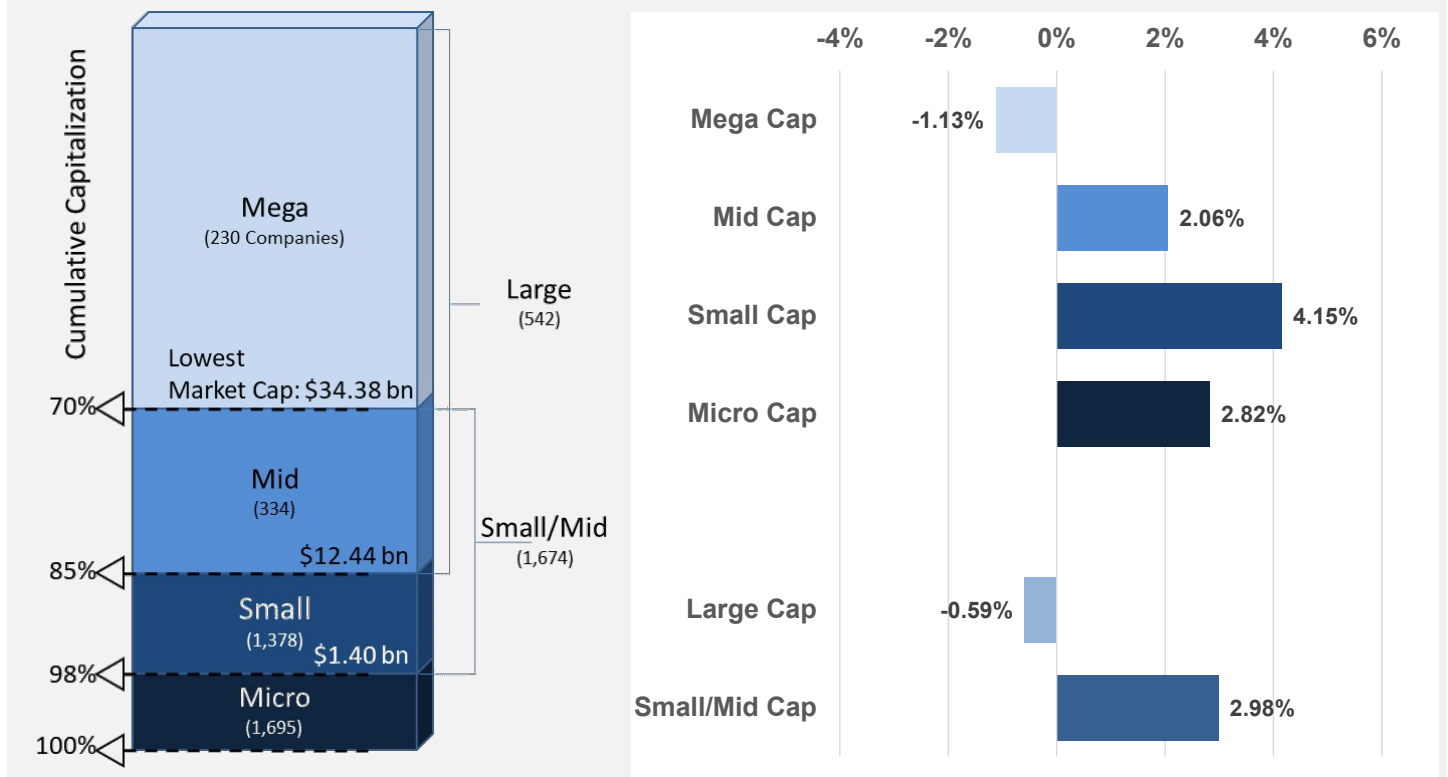
## CRSP U.S. Cap and Style Indexes Performance

Category	Index Name	Count	Float-Adjusted Market Cap (\$M)	Return for					
				1 Month	3 Months	YTD	1 Year	3 Years	5 Years
<b>Total Market</b>	CRSP U.S. Total Market	3,510	\$32,533,401	-2.15%	1.15%	3.22%	10.19%	10.06%	11.49%
<b>Cap</b>	CRSP U.S. Mega Cap	230	\$23,333,614	-3.27%	0.70%	5.21%	12.50%	11.66%	12.61%
	CRSP U.S. Mid Cap	334	\$4,856,414	-0.09%	1.31%	0.09%	5.81%	7.45%	9.06%
	CRSP U.S. Small Cap	1,378	\$3,880,496	2.00%	3.25%	-4.44%	1.69%	4.53%	8.15%
	CRSP U.S. Micro Cap	1,695	\$462,877	0.67%	3.31%	-5.37%	4.72%	1.93%	7.18%
	CRSP U.S. Large Cap	542	\$28,190,028	-2.74%	0.82%	4.42%	11.45%	10.98%	12.03%
	CRSP U.S. Small/Mid Cap	1,674	\$8,736,909	0.84%	2.16%	-2.02%	3.90%	6.12%	8.67%
<b>Value</b>	CRSP U.S. Mega Value	145	\$10,080,484	-2.67%	-0.61%	-12.51%	-7.01%	3.46%	7.52%
	CRSP U.S. Mid Value	195	\$2,294,216	0.64%	1.84%	-12.69%	-7.55%	1.04%	5.27%
	CRSP U.S. Small Value	886	\$2,074,736	3.02%	3.73%	-15.75%	-11.24%	-2.02%	4.08%
	CRSP U.S. Large Value	319	\$12,274,145	-2.06%	-0.14%	-12.55%	-7.07%	3.04%	7.23%
	CRSP U.S. Small/Mid Value	1060	\$4,324,378	1.76%	2.74%	-14.03%	-9.33%	-0.61%	4.56%
	CRSP U.S. Mega Growth	99	\$13,253,130	-3.73%	1.71%	23.46%	32.84%	19.54%	17.35%
CRSP U.S. Mid Growth	155	\$2,562,197	-0.73%	0.98%	13.28%	19.57%	13.78%	12.69%	
CRSP U.S. Small Growth	568	\$1,805,760	0.88%	2.79%	9.53%	18.01%	12.31%	12.84%	
CRSP U.S. Large Growth	252	\$15,915,883	-3.26%	1.58%	21.75%	30.53%	18.61%	16.48%	
CRSP U.S. Small/Mid Growth	715	\$4,412,531	-0.05%	1.71%	11.18%	18.61%	13.29%	12.89%	

Note: Data as of 10/30/2020; returns computation is based on total returns; data for 1-, 3-, and 5-years is annualized; counts may not add up due to banding and migration, see appendix

## CRSP Breakpoints (September 2020 Ranking)

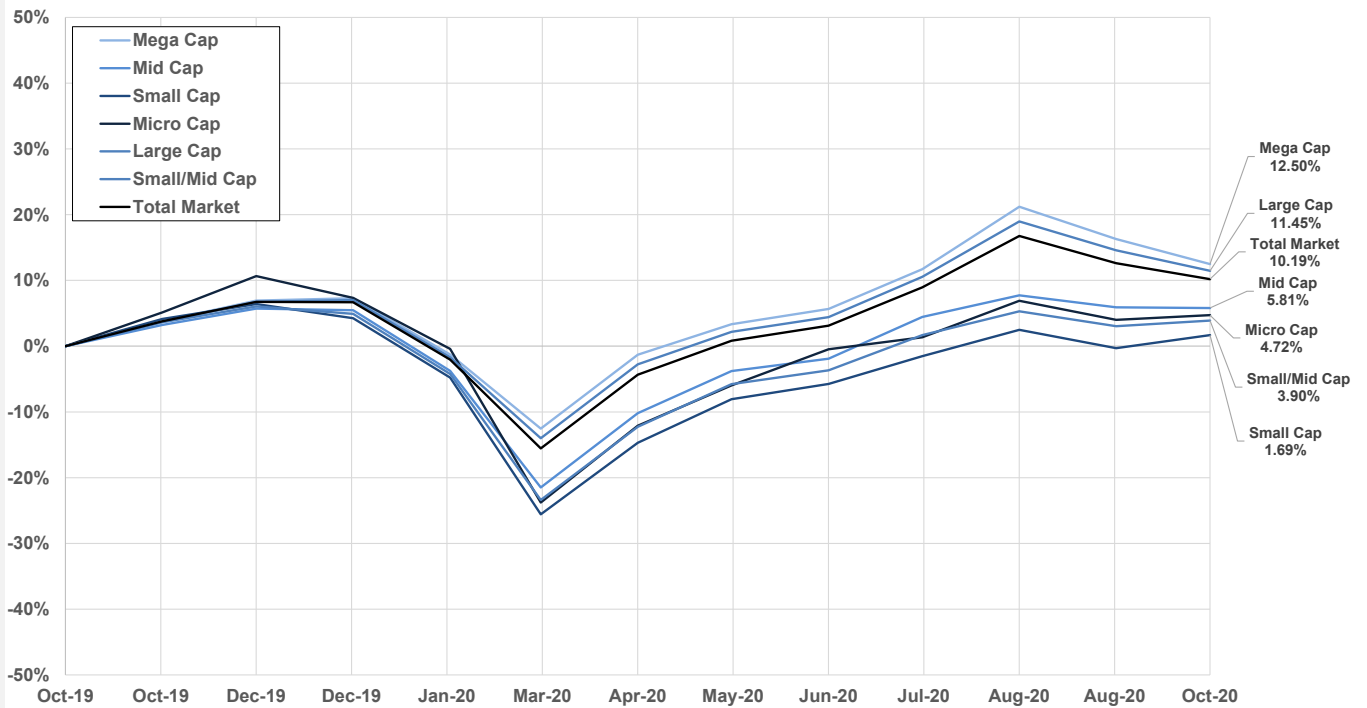
## October 2020: Performance Relative to Total Market



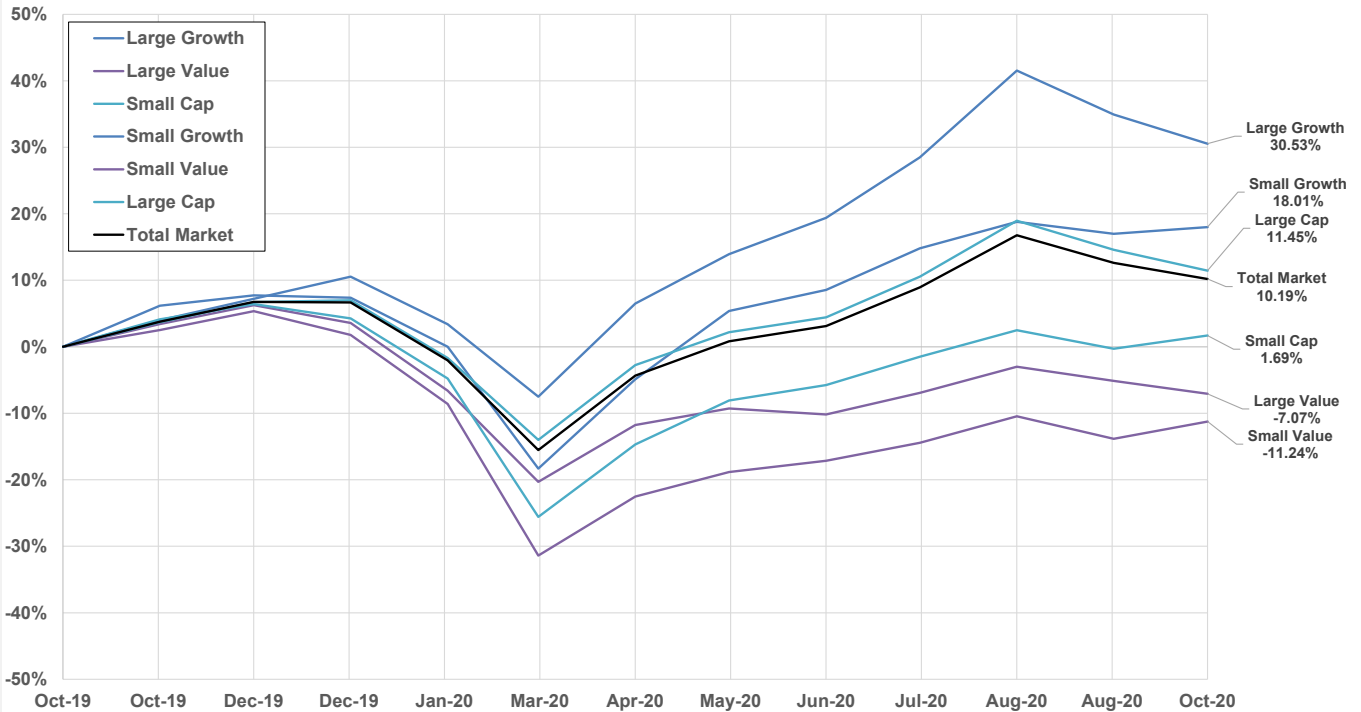
Note: Data for lowest market capitalization is as of 9/1/2020 ranking; company counts as of 10/30/2020; counts may not add up due to banding and migration, see appendix

Note: Data as of 10/30/2020; returns computation is based on total returns

## Cumulative Performance By Capitalization – Past 12 Months



## Cumulative Performance By Style – Past 12 Months



Note: Data as of 10/30/2020; returns computation is based on total returns

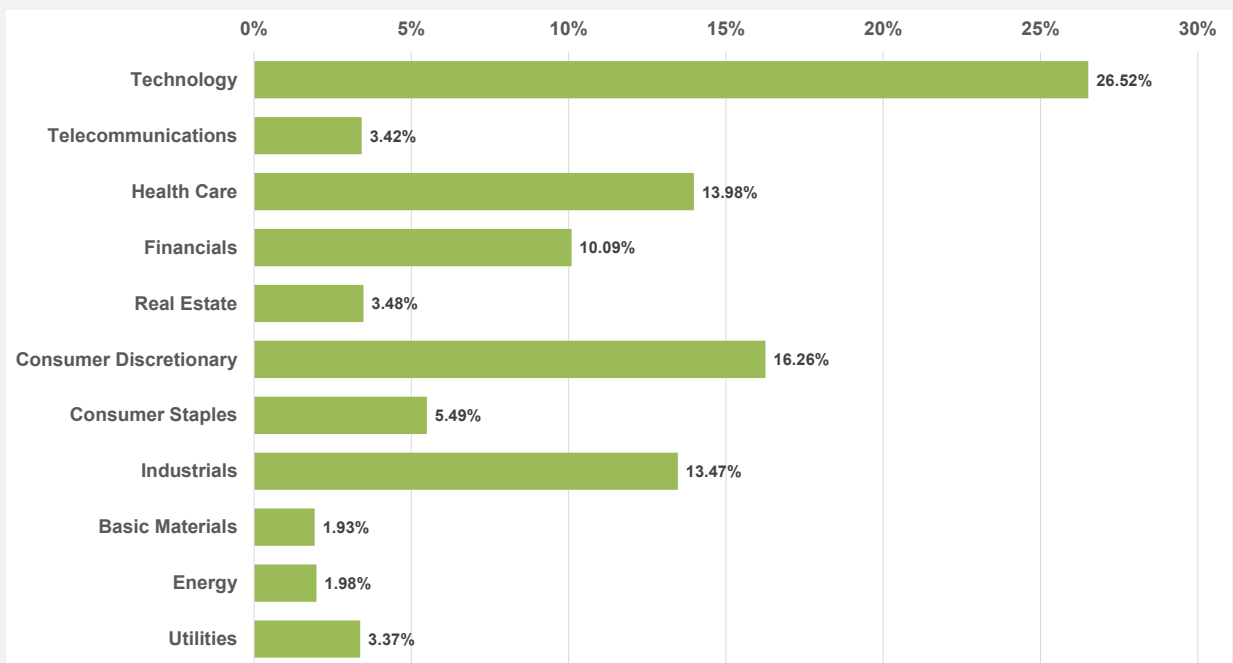
# CRSP U.S. SECTORS PERFORMANCE

## CRSP U.S. Sector Indexes Performance

Category	Index Name	Count	Float-Adjusted Market Cap (\$M)	Return for					
				1 Month	3 Months	YTD	1 Year	3 Years	5 Years
<b>Total Market</b>	CRSP U.S. Total Market	3,510	\$32,533,401	-2.15%	1.15%	3.22%	10.19%	10.06%	11.49%
<b>Sector Indexes</b>	<b>CRSP U.S. Technology</b>	<b>377</b>	<b>\$869,423</b>	<b>-1.94%</b>	<b>3.02%</b>	<b>27.04%</b>	<b>39.38%</b>	<b>23.19%</b>	<b>23.31%</b>
	CRSP U.S. Technology U		\$8,639,615						
	<b>CRSP U.S. Telecommunications</b>	<b>85</b>	<b>\$96,152</b>	<b>-3.22%</b>	<b>-1.57%</b>	<b>12.49%</b>	<b>10.59%</b>	<b>6.71%</b>	<b>6.28%</b>
	CRSP U.S. Telecommunications U		\$1,112,781						
	<b>CRSP U.S. Health Care</b>	<b>725</b>	<b>\$4,549,360</b>	<b>-2.97%</b>	<b>-1.82%</b>	<b>4.56%</b>	<b>14.72%</b>	<b>11.44%</b>	<b>10.54%</b>
	CRSP U.S. Health Care U		\$4,549,360						
	<b>CRSP U.S. Financials</b>	<b>621</b>	<b>\$3,283,374</b>	<b>0.75%</b>	<b>0.56%</b>	<b>-16.05%</b>	<b>-11.31%</b>	<b>1.69%</b>	<b>7.15%</b>
	CRSP U.S. Financials U		\$3,283,374						
	<b>CRSP U.S. Real Estate</b>	<b>210</b>	<b>\$1,126,044</b>	<b>-3.22%</b>	<b>-4.81%</b>	<b>-13.82%</b>	<b>-14.78%</b>	<b>3.15%</b>	<b>5.00%</b>
	CRSP U.S. Real Estate U		\$1,126,044						
	<b>CRSP U.S. Consumer Discretionary</b>	<b>501</b>	<b>\$530,221</b>	<b>-2.77%</b>	<b>4.81%</b>	<b>16.23%</b>	<b>21.53%</b>	<b>17.38%</b>	<b>13.32%</b>
	CRSP U.S. Consumer Discretionary U		\$5,290,364						
	<b>CRSP U.S. Consumer Staples</b>	<b>127</b>	<b>\$178,496</b>	<b>-2.94%</b>	<b>-1.42%</b>	<b>1.55%</b>	<b>7.12%</b>	<b>5.99%</b>	<b>6.82%</b>
	CRSP U.S. Consumer Staples U		\$1,784,893						
	<b>CRSP U.S. Industrials</b>	<b>498</b>	<b>\$4,376,872</b>	<b>-2.86%</b>	<b>3.13%</b>	<b>-1.71%</b>	<b>3.67%</b>	<b>6.97%</b>	<b>11.51%</b>
	CRSP U.S. Industrials U		\$4,376,872						
	<b>CRSP U.S. Basic Materials</b>	<b>114</b>	<b>\$62,842</b>	<b>-1.47%</b>	<b>1.31%</b>	<b>-1.07%</b>	<b>5.98%</b>	<b>0.39%</b>	<b>7.55%</b>
	CRSP U.S. Basic Materials U		\$627,303						
	<b>CRSP U.S. Energy</b>	<b>164</b>	<b>\$275,732</b>	<b>-3.14%</b>	<b>-16.11%</b>	<b>-48.31%</b>	<b>-43.84%</b>	<b>-21.27%</b>	<b>-12.84%</b>
	CRSP U.S. Energy U		\$645,415						
<b>CRSP U.S. Utilities</b>	<b>88</b>	<b>\$1,097,382</b>	<b>3.43%</b>	<b>2.13%</b>	<b>-3.49%</b>	<b>-2.15%</b>	<b>7.23%</b>	<b>11.04%</b>	
CRSP U.S. Utilities U		\$1,097,382							

Note: Data as of 10/30/2020; returns computation is based on total returns; data for 1-, 3-, and 5-years is annualized. CRSP US Sector Indexes total returns are for constrained indexes, meaning that securities' weights within sector indexes are adjusted to comply with IRS Regulated Investment Company rules. Sector indexes with "U" at the end of the name are not constrained to comply with IRS RIC rules. CRSP U.S. Sector Indexes based on Enhanced FTSE ICB® (EICB) methodology are used for returns after 6/30/2020; CRSP U.S. Sector Indexes based on FTSE ICB® methodology are used for returns prior to 6/30/2020. For more details on pairing between EICB-based and ICB-based CRSP U.S. Sector Indexes refer to our [white paper](#) and [public announcement](#).

## CRSP U.S. Total Market – FTSE Industry Classification Benchmark Sector Allocation



Note: Data as of 10/30/2020; Sector weights are computed using company's assignment to the industry as defined by Enhanced FTSE ICB®

# CRSP U.S. INDEXES LINKED ASSET VALUES

Linked Asset Values (USD \$M) as of Oct-2020							
Index	Index Name (TR - Total Return, PR - Price Only Return)	Index Identifier	NASDAQ GIDS Post Date	Bloomberg FIGI	ETF	Mutual Fund	Total
Total Market	CRSP US Total Market Index (TR)	CRSPTMT	12/31/2012	BBG003PZ7F43	\$163,383		\$1,000,899
	CRSP US Total Market Index (PR)	CRSPTM1	1/18/2011	BBG001DQ7123		\$837,516	
CRSP Australian Hedged	CRSP US Total Market Index (AUD-hedged) (TR)	CRSPTAHT	7/1/2015	BBG009J9GN20			
	CRSP US Total Market Index (AUD-hedged) (PR)	CRSPTAH1	7/1/2015	BBG009J9GN11			
CRSP Australian Non-Hedged	CRSP US Total Market Total Return Index AUD (TR)	CRSPTMAT	7/1/2015	BBG009J9GN48			
	CRSP US Total Market Total Return Index AUD (PR)	CRSPTMA1	7/1/2015	BBG009J9GN39			
CRSP Canadian Hedged	CRSP US Total Market Index (CAD-hedged) (TR)	CRSPTCHT	12/31/2012	BBG003PZ7F52	\$526		\$526
	CRSP US Total Market Index (CAD-hedged) (PR)	CRSPTCH1	12/31/2012	BBG003PZ7F34			
CRSP Canadian Non-Hedged	CRSP US Total Market Total Return Index CAD (TR)	CRSPTMCT	4/15/2013	BBG004MFW5W1	\$1,949		\$1,949
	CRSP US Total Market Total Return Index CAD (PR)	CRSPTMC1	4/15/2013	BBG004MFW5V2			
Mega Cap	CRSP US Mega Cap Index (TR)	CRSPMET	12/31/2012	BBG003PZ7F61	\$2,835		\$3,000
	CRSP US Mega Cap Index (PR)	CRSPME1	8/15/2011	BBG001YCYN69		\$165	
Mega Cap Growth	CRSP US Mega Cap Growth Index (TR)	CRSPMEGT	12/31/2012	BBG003PZ7F70	\$9,093		\$9,160
	CRSP US Mega Cap Growth Index (PR)	CRSPMEG1	10/1/2012	BBG003PZ7DH4		\$67	
Mega Cap Value	CRSP US Mega Cap Value Index (TR)	CRSPMEVT	12/31/2012	BBG003PZ7F89	\$2,866		\$2,976
	CRSP US Mega Cap Value Index (PR)	CRSPMEV1	10/1/2012	BBG003PZ7DJ2		\$110	
Large Cap (Mega + Mid)*	CRSP US Large Cap Index (TR)	CRSPLCT	12/31/2012	BBG003PZ7F98	\$18,291		\$28,136
	CRSP US Large Cap Index (PR)	CRSPLC1	8/15/2011	BBG001YCYN50		\$9,845	
Large Cap Growth*	CRSP US Large Cap Growth Index (TR)	CRSPLCGT	12/31/2012	BBG003PZ7FB5	\$58,894		\$126,068
	CRSP US Large Cap Growth Index (PR)	CRSPLCG1	10/1/2012	BBG003PZ7DK0		\$67,174	
Large Cap Value*	CRSP US Large Cap Value Index (TR)	CRSPLCVT	12/31/2012	BBG003PZ7FC4	\$50,498		\$81,348
	CRSP US Large Cap Value Index (PR)	CRSPLCV1	10/1/2012	BBG003PZ7DL9		\$30,849	
Mid Cap	CRSP US Mid Cap Index (TR)	CRSPMIT	12/31/2012	BBG003PZ7FD3	\$34,854		\$114,903
	CRSP US Mid Cap Index (PR)	CRSPMI1	8/15/2011	BBG001YCYN87		\$80,048	
Mid Cap Growth	CRSP US Mid Cap Growth Index (TR)	CRSPMIGT	12/31/2012	BBG003PZ7FF1	\$8,354		\$17,398
	CRSP US Mid Cap Growth Index (PR)	CRSPMIG1	10/1/2012	BBG003PZ7DM8		\$9,043	
Mid Cap Value	CRSP US Mid Cap Value Index (TR)	CRSPMIVT	12/31/2012	BBG003PZ7FG0	\$9,050		\$17,717
	CRSP US Mid Cap Value Index (PR)	CRSPMIV1	10/1/2012	BBG003PZ7DN7		\$8,666	
Small-Mid Cap	CRSP US Small-Mid Cap Index (TR)	CRSPSMT	3/10/2014	BBG0069LWSJ3			
	CRSP US Small-Mid Cap Index (PR)	CRSPSM1	3/10/2014	BBG0069LWSH5			
Small-Mid Cap Growth	CRSP US Small-Mid Cap Growth Index (TR)	CRSPSMGT	3/10/2014	BBG0069LWSF7			
	CRSP US Small-Mid Cap Growth Index (PR)	CRSPSMG1	3/10/2014	BBG0069LWSC0			
Small-Mid Cap Value	CRSP US Small-Mid Cap Value Index (TR)	CRSPSMVT	3/10/2014	BBG0069LWSG6			
	CRSP US Small-Mid Cap Value Index (PR)	CRSPSMV1	3/10/2014	BBG0069LWSD9			
Small Cap	CRSP US Small Cap Index (TR)	CRSPSCT	12/31/2012	BBG003PZ7FH9	\$29,029		\$91,156
	CRSP US Small Cap Index (PR)	CRSPSC1	8/15/2011	BBG001YCYNB3		\$62,127	
Small Cap Growth	CRSP US Small Cap Growth Index (TR)	CRSPSCGT	12/31/2012	BBG003PZ7FJ7	\$11,397		\$27,620
	CRSP US Small Cap Growth Index (PR)	CRSPSCG1	10/1/2012	BBG003PZ7DP5		\$16,224	
Small Cap Value	CRSP US Small Cap Value Index (TR)	CRSPSCVT	12/31/2012	BBG003PZ7FK5	\$13,575		\$28,303
	CRSP US Small Cap Value Index (PR)	CRSPSCV1	10/1/2012	BBG003PZ7DQ4		\$14,728	
Micro Cap Index	CRSP US Micro Cap Index (TR)	CRSPMCT	12/31/2012	BBG003PZ7FL4			
	CRSP US Micro Cap Index (PR)	CRSPMC1	8/15/2011	BBG001YCYN78			
Consumer Staples Sector	CRSP US Consumer Staples Index (TR)	CRSPCST	12/31/2012	BBG003PZ7FN2			
	CRSP US Consumer Staples Index (PR)	CRSPCS1	7/16/2012	BBG003PZ7DS2			
Consumer Discretionary Sector	CRSP US Consumer Discretionary Index (TR)	CRSPCDT	12/31/2012	BBG00VC1QCP3			
	CRSP US Consumer Discretionary Index (PR)	CRSPCD1	7/16/2012	BBG00VC1Q658			
Energy Sector	CRSP US Energy Index (TR)	CRSPENT	12/31/2012	BBG003PZ7FP0			
	CRSP US Energy Index (PR)	CRSPEN1	7/16/2012	BBG003PZ7DT1			
Financials Sector	CRSP US Financials Index (TR)	CRSPFNT	12/31/2012	BBG003PZ7FQ9			
	CRSP US Financials Index (PR)	CRSPFN1	7/16/2012	BBG003PZ7DV8			
Health Care Sector	CRSP US Health Care Index (TR)	CRSPHCT	12/31/2012	BBG003PZ7FR8			
	CRSP US Health Care Index (PR)	CRSPHC1	7/16/2012	BBG003PZ7DW7			
Industrials Sector	CRSP US Industrials Index (TR)	CRSPIDT	12/31/2012	BBG003PZ7FS7			
	CRSP US Industrials Index (PR)	CRSPID1	7/16/2012	BBG003PZ7DX6			
Technology Sector	CRSP US Technology Index (TR)	CRSPITT	12/31/2012	BBG003PZ7FT6			
	CRSP US Technology Index (PR)	CRSPIT1	7/16/2012	BBG003PZ7DY5			
Basic Materials Sector	CRSP US Basic Materials Index (TR)	CRSPMTT	12/31/2012	BBG003PZ7FV3			
	CRSP US Basic Materials Index (PR)	CRSPMT1	7/16/2012	BBG003PZ7DZ4			
Telecommunications Sector	CRSP US Telecommunications Index (TR)	CRSPTEt	12/31/2012	BBG003PZ7FW2			
	CRSP US Telecommunications Index (PR)	CRSPTE1	7/16/2012	BBG003PZ7F07			
Utilities Sector	CRSP US Utilities Index (TR)	CRSPUTT	12/31/2012	BBG003PZ7FX1			
	CRSP US Utilities Index (PR)	CRSPUT1	7/16/2012	BBG003PZ7F16			
Real Estate Index Sector	CRSP US Real Estate Index (TR)	CRSPRET	12/31/2012	BBG003PZ7FY0			
	CRSP US Real Estate Index (PR)	CRSPRE1	8/15/2011	BBG001YCYN96			
Small Cap ex-Real Estate	CRSP US Small Cap ex-REIT Index (TR)	CRSPSXT	12/31/2012	BBG003PZ7FZ9			
	CRSP US Small Cap ex-REIT Index (PR)	CRSPSX1	10/1/2012	BBG003PZ7F25			
<b>Total Linked Assets</b>					<b>\$414,595</b>	<b>\$1,136,563</b>	<b>\$1,551,158</b>

Note: Data as of 10/30/2020; Linked assets values are in millions of USD

## RECENT RESEARCH PAPERS USING CRSP DATA

- Paper: **The Gender Position Gap and Firm Performance**
  - CRSP Database Used: **CRSP US Stock Databases**
  - Authors: Chuchu Liang, Ben Lourie, Alexander Nekrasov, Terry Shevlin
- Paper: **Open Source Cross-Sectional Asset Pricing**
  - CRSP Database Used: **CRSP/Compustat Merged Database**
  - Authors: Andrew Y. Chen, Tom Zimmermann
- Paper: **Investor Sentiment and the (Discretionary) Accrual-return Relation**
  - CRSP Database Used: **CRSP US Indexes**
  - Authors: Jiajun Jiang, Qi Liu, Bo Sun

# SERVICES OFFERED BY CRSP

## Research Products

Academic, practitioner, and government institutions for whom data quality, accuracy and completeness are essential rely on CRSP data products. Our portfolio of stock, indexes, mutual fund, treasury, and REIT market databases is relied upon by those whose research and publications must withstand rigorous analysis for accuracy. Quantitative analysts in the commercial market depend on CRSP's historical depth and unrivaled quality in order to perform backtesting and modeling calculations. In the government sector, regulators and policy makers value CRSP's complete data sets as the basis for financial and economic research.

- **CRSP US Stock Databases**
- **CRSP 10**
- **CRSP Historical Indexes**
- **CRSP US Index History Files - Intraday**
- **CRSP/Compustat Merged Database**
- **CRSP US Treasury Database**
- **CRSP/Ziman Real Estate Database**
- **CRSP Survivor-Bias-Free US Mutual Funds**
- **CRSP Cap-Based Portfolio Index**
- **CRSP Customized Data Sets**

For more information regarding CRSP Research Products, contact [subscriptions@crsp.org](mailto:subscriptions@crsp.org).

## Investment Products

Since 2013, CRSP LLC has maintained, disseminated and expanded its' proprietary investable index product line. Currently comprising over 66 capitalization-based, industry sector and value and growth style indexes, the CRSP Market Indexes (CRSPMI) suite blends ongoing advancements in academic research with the most efficient and productive industry practices. CRSPMI continues to dedicate resources and personnel to expand its capabilities and services for providing a broad, efficient and low-cost set of performing index products and benchmarks for the entire investment community.

CRSPMI offers indexes covering the entire U.S. equities marketplace, from its flagship Total Market Index to a broad set of different cap segments (Large, Mega, Mid, Small, Micro) with Value and Growth versions of each, as well as 11 Sector Indexes. A [quick reference guide](#) provides an overview of the CRSPMI index offerings.

CRSPMI distributes its investable indexes and related constituents, corporate actions and rebalancing information to a broad community of licensed clients over multiple delivery channels, including [direct client feed](#), secure website and approved third-party redistributors.

CRSPMI welcomes questions or inquiries about its index products and services, including data licensing or benchmarking requests, at [indexes@crsp.org](mailto:indexes@crsp.org).



# APPENDIX – CRSP U.S. INDEXES DESCRIPTIVE INFORMATION

## CRSP U.S. Indexes Descriptive Statistics

Category	Index Name	Count	Float-Adjusted Market Cap (\$M)	Largest Company (\$M)	Smallest Company (\$M)	Median Company (\$M)	Average Company (\$M)	Largest Company Weight (%)
<b>Total Market</b>	CRSP U.S. Total Market	3,510	\$32,533,401	\$1,675,604	\$3	\$777	\$9,269	5.15%
<b>Cap</b>	CRSP U.S. Mega Cap	230	\$23,333,614	\$1,675,604	\$1,830	\$54,018	\$101,450	7.18%
	CRSP U.S. Mid Cap	334	\$4,856,414	\$40,549	\$1,079	\$12,968	\$14,540	0.83%
	CRSP U.S. Small Cap	1,378	\$3,880,496	\$16,511	\$32	\$2,038	\$2,816	0.43%
	CRSP U.S. Micro Cap	1,695	\$462,877	\$2,775	\$3	\$137	\$273	0.60%
	CRSP U.S. Large Cap	542	\$28,190,028	\$1,675,604	\$1,079	\$21,418	\$52,011	5.94%
	CRSP U.S. Small/Mid Cap	1,674	\$8,736,909	\$40,549	\$32	\$2,629	\$5,219	0.46%
<b>Value</b>	CRSP U.S. Mega Value	145	\$10,080,484	\$388,197	\$1,830	\$41,740	\$69,521	3.85%
	CRSP U.S. Mid Value	195	\$2,294,216	\$31,717	\$1,024	\$10,858	\$11,765	1.38%
	CRSP U.S. Small Value	886	\$2,074,736	\$14,486	\$55	\$1,704	\$2,342	0.70%
	CRSP U.S. Large Value	319	\$12,274,145	\$388,197	\$1,024	\$18,140	\$38,477	3.16%
	CRSP U.S. Small/Mid Value	1,060	\$4,324,378	\$31,717	\$55	\$2,195	\$4,080	0.73%
	<b>Growth</b>	CRSP U.S. Mega Growth	99	\$13,253,130	\$1,675,604	\$3,109	\$55,545	\$133,870
CRSP U.S. Mid Growth		155	\$2,562,197	\$40,549	\$1,024	\$15,047	\$16,530	1.58%
CRSP U.S. Small Growth		568	\$1,805,760	\$16,511	\$32	\$2,242	\$3,179	0.91%
CRSP U.S. Large Growth		252	\$15,915,883	\$1,675,604	\$1,024	\$23,460	\$63,158	10.53%
CRSP U.S. Small/Mid Growth		715	\$4,412,531	\$40,549	\$32	\$3,070	\$6,171	0.92%
<b>Sector Indexes</b>		<b>CRSP U.S. Technology</b>	<b>377</b>	<b>\$869,423</b>	<b>\$155,953</b>	<b>\$4</b>	<b>\$364</b>	<b>\$2,306</b>
	CRSP U.S. Technology U		\$8,639,615	\$1,675,604	\$4	\$1,561	\$22,917	19.39%
	<b>CRSP U.S. Telecommunications</b>	<b>85</b>	<b>\$96,152</b>	<b>\$16,586</b>	<b>\$9</b>	<b>\$351</b>	<b>\$1,131</b>	<b>17.25%</b>
	CRSP U.S. Telecommunications U		\$1,112,781	\$235,828	\$9	\$410	\$13,092	21.19%
	<b>CRSP U.S. Health Care</b>	<b>725</b>	<b>\$4,549,360</b>	<b>\$360,986</b>	<b>\$3</b>	<b>\$372</b>	<b>\$6,275</b>	<b>7.93%</b>
	CRSP U.S. Health Care U		\$4,549,360	\$360,986	\$3	\$372	\$6,275	7.93%
	<b>CRSP U.S. Financials</b>	<b>621</b>	<b>\$3,283,374</b>	<b>\$388,197</b>	<b>\$3</b>	<b>\$493</b>	<b>\$5,287</b>	<b>11.82%</b>
	CRSP U.S. Financials U		\$3,283,374	\$388,197	\$3	\$493	\$5,287	11.82%
	<b>CRSP U.S. Real Estate</b>	<b>210</b>	<b>\$1,126,044</b>	<b>\$101,866</b>	<b>\$5</b>	<b>\$1,323</b>	<b>\$5,362</b>	<b>9.05%</b>
	CRSP U.S. Real Estate U		\$1,126,044	\$101,866	\$5	\$1,323	\$5,362	9.05%
	<b>CRSP U.S. Consumer Discretionary</b>	<b>501</b>	<b>\$530,221</b>	<b>\$113,786</b>	<b>\$3</b>	<b>\$137</b>	<b>\$1,058</b>	<b>21.46%</b>
	CRSP U.S. Consumer Discretionary U		\$5,290,364	\$1,292,660	\$3	\$1,040	\$10,560	24.43%
	<b>CRSP U.S. Consumer Staples</b>	<b>127</b>	<b>\$178,496</b>	<b>\$33,873</b>	<b>\$6</b>	<b>\$148</b>	<b>\$1,405</b>	<b>18.98%</b>
	CRSP U.S. Consumer Staples U		\$1,784,893	\$340,842	\$6	\$1,425	\$14,054	19.10%
	<b>CRSP U.S. Industrials</b>	<b>498</b>	<b>\$4,376,872</b>	<b>\$306,364</b>	<b>\$6</b>	<b>\$1,375</b>	<b>\$8,789</b>	<b>7.00%</b>
	CRSP U.S. Industrials U		\$4,376,872	\$306,364	\$6	\$1,375	\$8,789	7.00%
	<b>CRSP U.S. Basic Materials</b>	<b>114</b>	<b>\$62,842</b>	<b>\$11,410</b>	<b>\$10</b>	<b>\$152</b>	<b>\$551</b>	<b>18.16%</b>
	CRSP U.S. Basic Materials U		\$627,303	\$115,797	\$15	\$1,411	\$5,503	18.46%
	<b>CRSP U.S. Energy</b>	<b>164</b>	<b>\$275,732</b>	<b>\$58,959</b>	<b>\$4</b>	<b>\$130</b>	<b>\$1,681</b>	<b>21.38%</b>
	CRSP U.S. Energy U		\$645,415	\$137,925	\$4	\$296	\$3,935	21.37%
<b>CRSP U.S. Utilities</b>	<b>88</b>	<b>\$1,097,382</b>	<b>\$143,388</b>	<b>\$12</b>	<b>\$3,445</b>	<b>\$12,470</b>	<b>13.07%</b>	
CRSP U.S. Utilities U		\$1,097,382	\$143,388	\$12	\$3,445	\$12,470	13.07%	

Note: Data as of 10/30/2020; counts may not add up due to banding and migration, see appendix; CRSP U.S. Sector Indexes are constrained indexes, meaning that securities' weights within sector indexes are adjusted to comply with IRS Regulated Investment Company (RIC) rules. Sector indexes with "U" at the end of the name are not constrained to comply with IRS RIC rules. CRSP U.S. Sector Indexes based on Enhanced FTSE ICB® (EICB) methodology are used after 6/30/2020; CRSP U.S. Sector Indexes based on FTSE ICB® methodology are used prior to 6/30/2020. For more details on pairing between EICB-based and ICB-based CRSP U.S. Sector Indexes refer to our [white paper](#) and [public announcement](#)

## APPENDIX – DEFINITIONS

**Count:** Number of companies contained within the index. A single company may have multiple securities associated with it. Counts for individual cap indexes may not add up to counts for the combined cap index due to banding and migration. For example, number of companies in Mega Cap Index plus number of companies in Mid Cap Index may not add up to number of companies in Large Cap. For more information regarding banding and migration please refer to the [CRSP Methodology](#)

**Float-Adjusted Market Cap:** represents the float-adjusted market capitalization of a company as described in the [CRSP Methodology](#). For sector indexes that had to be constrained to comply with IRS Regulated Investment Company rules, it means that the company's float adjusted market cap may have been adjusted further per our methodology.

**Median Company:** Median float-adjusted market capitalization of a company included in the index

**Average Company:** Average float-adjusted market capitalization of a company included in the index

**Returns:** total index returns are used in computations, with 1-, 3- and 5-year returns annualized

## About CRSP

Since 1960, CRSP has provided research-quality data to scholarly researchers and advanced the body of knowledge in finance, economics and related disciplines. Today, nearly 500 leading academic institutions in 35 countries rely on CRSP data for academic research and to support classroom instructions

## Citing CRSP

Any dissemination (including by electronic means or in any other form) of the graphs or information herein shall include an attribution to CRSP as follows.

“This data and information is based on data from the Center for Research in Security Prices, LLC (CRSP), ©YYYY.”

YYYY being the year the database was published.

## Disclaimers

CRSP, its affiliates, its parent company, and its third party suppliers do not make any representations or guarantees regarding the accuracy of the data or information. Although the contents have been obtained from sources believed to be reliable, they are provided to your institution on an "as is" basis without warranties of any kind. With respect to this service and the contents, and to the fullest extent permitted by applicable law, CRSP, its affiliates, its parent company, and its third party suppliers hereby disclaim all express, implied and statutory warranties of any kind to the Subscriber or any third party, including, but not limited to, representations and warranties regarding accuracy, completeness, correctness, merchantability, or fitness for any particular purpose, or any representations or warranties arising from usage or custom or trade or by operation of law. CRSP, its affiliates, its parent company, and its third party suppliers, assume no responsibility for the consequences of any errors or omissions. In no event shall CRSP, its affiliates, its parent company, or its third party suppliers be liable to the Subscriber or to any third party for any loss or injury caused in whole or in part by contingencies beyond their control or negligence in procuring, compiling, or delivering any data or information. In no event shall CRSP, its affiliates, its parent company, or its third party suppliers be liable to the Subscriber or any third party for any claim arising out of or relating to CRSP-provided data or information, including, but not limited to, any decision made or action taken by your institution and any and all users affiliated with your institution based on the use of the data or information or for any types of damages (such as, but not limited to, direct, consequential, special, incidental, punitive or indirect damages), even if advised of the possibility of such damages.

All information is provided for informational purposes only. Every effort is made to ensure that all information given in this publication is accurate, but no responsibility or liability can be accepted by CRSP® nor its licensors for any errors or for any loss from use of this publication. Neither CRSP® nor any of its licensors make any claim, prediction, warranty or representation whatsoever, expressly or impliedly, either as to the results to be obtained from the use of the CRSP Sector Indexes or the fitness or suitability of the Indexes for any particular purpose to which they might be put. CRSP® does not provide investment advice and nothing in this document should be taken as constituting financial or investment advice. CRSP® makes no representation regarding the advisability of investing in any asset. A decision to invest in any such asset should not be made in reliance on any information herein. Indexes cannot be invested in directly. Inclusion of an asset in an index is not a recommendation to buy, sell or hold that asset. The general information contained in this publication should not be acted upon without obtaining specific legal, tax, and investment advice from a licensed professional. No part of this information may be reproduced, stored in a retrieval system or transmitted in any form or by any means, electronic, mechanical, photocopying, recording or otherwise. Distribution of the CRSP® index values and the use of their indexes to create financial products require a license with CRSP® and/or its licensors. The Industry Classification Benchmark ("ICB") is owned by FTSE International Limited ("FTSE"). Neither CRSP® nor FTSE accept any liability to any person for any loss or damage arising out of any error or omission in the ICB. Past performance is no guarantee of future results. Charts and graphs are provided for illustrative purposes only. Index returns shown may not represent the results of the actual trading of investable assets. Certain returns shown may reflect back-tested performance. All performance presented prior to the index inception date is back-tested performance. Back-tested performance is not actual performance, but is hypothetical. The back-test calculations are based on the same methodology that was in effect when the index was officially launched. However, back-tested data may reflect the application of the index methodology with the benefit of hindsight, and the historic calculations of an index may change from month to month based on revisions to the underlying economic data used in the calculation of the index.

CRSP uses various trademarks and trade names in the ordinary course of its business, including without limitation, CRSP's corporate name and logo. All other trademarks or trade names referred to in this paper are the property of their respective owners. Solely for convenience, the trademarks and trade names in this paper may be referred to without the ® and ™ symbols, but such references should not be construed as any indicator that their respective owners will not assert, to the fullest extent under applicable law, their rights thereto.

The Industry Classification Benchmark ("ICB") is a product of FTSE International Limited ("FTSE") and is licensed for use. FTSE is part of the London Stock Exchange Group plc and its applicable group undertakings (the "LSE Group"). The LSE Group includes (1) FTSE International Limited ("FTSE"), (2) Frank Russell Company ("Russell"), (3) FTSE Global Debt Capital Markets Inc. and FTSE Global Debt Capital Markets Limited (together, "FTSE Canada"), (4) MTSNext Limited ("MTSNext"), (5) Mergent, Inc. ("Mergent"), (6) FTSE Fixed Income LLC ("FTSE FI") and (7) The Yield Book Inc ("YB"). FTSE Russell® is a trading name of FTSE, Russell, FTSE Canada, MTSNext, Mergent, FTSE FI, YB. "FTSE®", "Russell®", "FTSE Russell®", "MTS®", "FTSE4Good®", "ICB®", "Mergent®", "The Yield Book®" and all other trademarks and service marks used herein (whether registered or unregistered) are trademarks and/or service marks owned or licensed by the applicable member of the LSE Group or their respective licensors and are owned, or used under license, by FTSE, Russell, MTSNext, FTSE Canada, Mergent, FTSE FI, YB. FTSE International Limited is authorized and regulated by the Financial Conduct Authority as a benchmark administrator.