



CRSP[®] MARKET INDEXES

US MARKET UPDATE

August 2024

ABOUT CRSP

As an affiliate of [The University of Chicago](#), the [Center for Research in Security Prices \(CRSP\)](#) has been driving financial innovation since its founding in 1960.

For over 60 years, CRSP has been the premier provider of the world's first and most comprehensive resource for historical security prices and returns information, offering scholars and market participants data of the highest integrity and transparency to ensure the strongest foundation for economic forecasting, stock market research and financial analysis conducted by academic institutions, financial institutions and government entities.

CRSP[®] RESEARCH DATA PRODUCTS

[CRSP US Stock Databases](#)

[CRSP Historical Indexes](#)

[CRSP10](#)

[CRSP/Compustat Merged Database](#)

[CRSP Survivor-Bias-Free US Mutual Funds](#)

[CRSP US Treasury Database](#)

[CRSP/Ziman Real Estate Database](#)

[CRSP Cap-Based Portfolio Index](#)

[CRSPMI Intraday](#)

[CRSPMI 2013 Historical Indexes](#)

CRSP Research Data Products are relied upon by academic, financial, and government institutions for whom **data quality and completeness are essential**, and whose research and publications must withstand rigorous analysis for accuracy. Quantitative analysts in the commercial market depend on CRSP's historical depth and unrivaled quality to perform backtesting and modeling calculations. In the government sector, regulators and policy makers value CRSP's complete data sets as the basis for financial and economic research.

CRSP Research Data has led to the transformation of the world of finance, illuminating the benefits of investments in equities, providing understanding of factors such as value, size and momentum, exploring the benefits of passive investing vs. active management, and contributing to the ongoing improvement of investor outcomes and the development of the modern financial ecosystem and investment industry.

For more information, visit crsp.org/research or contact subscriptions@crsp.org.

CRSP[®] MARKET INDEXES

[Market Cap](#)

[Value](#)

[Growth](#)

[Sector](#)

[ESG](#)

CRSP has been producing indexes since 1966, helping academics and investment professionals understand and research the trends in the financial markets. **Drawing on this expertise, in 2011 CRSP designed and launched the CRSP Market Indexes (CRSPMI) product line to provide a comprehensive suite of efficient, transparent and representative benchmarks covering the entire U.S. equity marketplace.** Currently comprising over 44 capitalization-based, industry sector, value and growth style, and ESG indexes, the CRSPMI suite blends ongoing advancements in academic research with the most efficient and productive industry practices. CRSPMI continues to dedicate resources

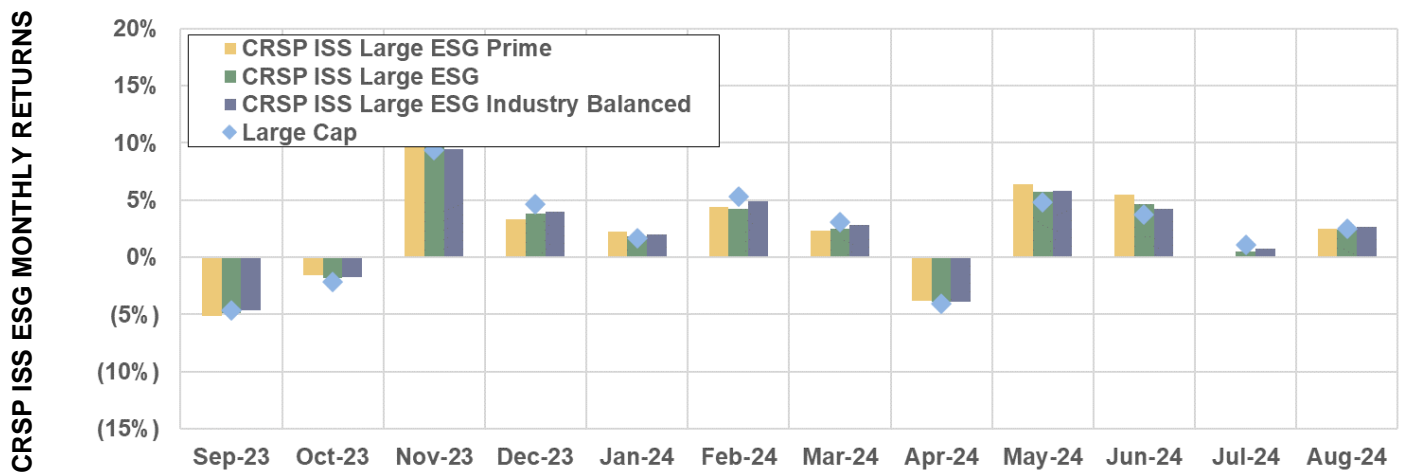
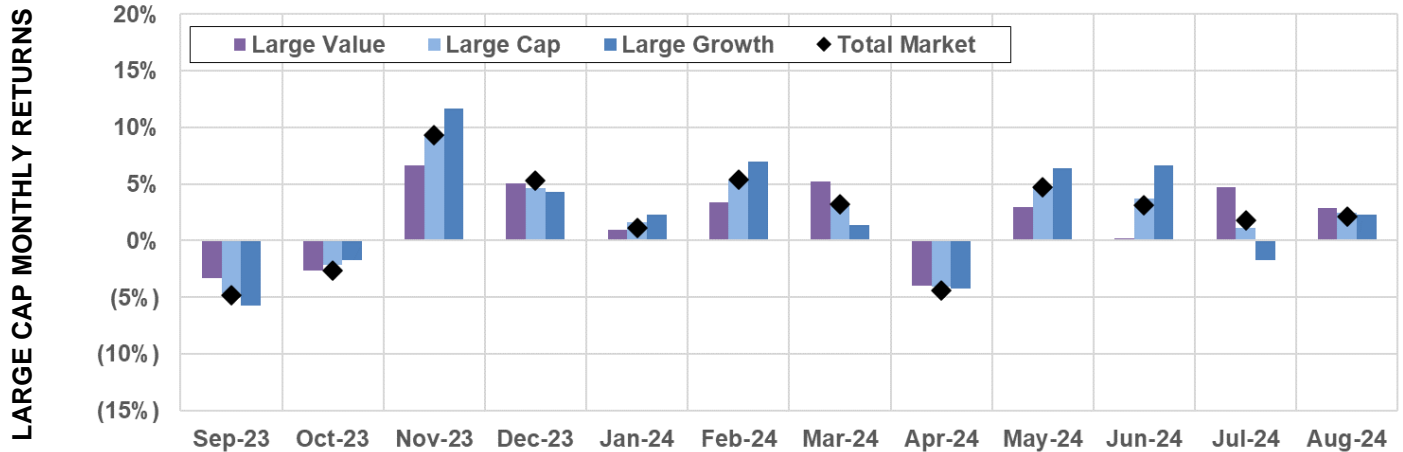
and personnel to expand its capabilities and services for providing a broad, efficient and low-cost set of performing index products and benchmarks for the entire investment community.

The CRSPMI products are anchored by the flagship [CRSP Total Market Index \(CRSPTMT\)](#) , which provides investors with a consistently holistic and representative benchmark for the entire qualifying U.S. equity market. Building from this, the CRSPMI suite further expands to offer investors a wide selection indexes including Market Capitalization (Micro, Small, Mid, Large, Mega), Value and Growth styles, Sectors, and ESG benchmarks.

CRSPMI distributes its investable indexes and related constituents, corporate actions and rebalancing information to a broad community of licensed clients over multiple delivery channels, including direct client feed, secure website and approved third-party redistributors.

For more information, visit crsp.org/indexes or contact indexes@crsp.org.

U.S. MARKET FOR THE PAST 12 MONTHS



SECTOR INDEXES MONTHLY RETURNS

	Sep-23	Oct-23	Nov-23	Dec-23	Jan-24	Feb-24	Mar-24	Apr-24	May-24	Jun-24	Jul-24	Aug-24
Consumer Discretionary	(5.95%)	(4.42%)	10.49%	6.57%	(3.50%)	8.91%	0.83%	(5.55%)	1.26%	3.36%	1.62%	0.06%
Consumer Staples	(3.90%)	(2.10%)	4.44%	2.88%	1.04%	2.25%	3.19%	(1.01%)	2.35%	(0.51%)	2.41%	4.99%
Energy	2.13%	(5.44%)	(1.18%)	(0.02%)	(0.77%)	3.27%	10.41%	(1.01%)	0.14%	(1.60%)	2.28%	(2.66%)
Financials	(2.89%)	(3.01%)	11.35%	6.57%	2.05%	4.40%	4.75%	(4.74%)	3.42%	(0.68%)	7.27%	3.82%
Healthcare	(3.75%)	(3.90%)	5.72%	5.57%	2.44%	3.70%	2.22%	(5.47%)	2.32%	1.92%	3.19%	4.91%
Industrials	(5.34%)	(3.57%)	9.33%	8.06%	(1.21%)	6.65%	4.44%	(4.50%)	2.20%	(1.57%)	6.72%	1.58%
Materials	(4.96%)	(3.95%)	9.35%	5.89%	(3.72%)	5.62%	6.39%	(4.75%)	3.75%	(3.83%)	5.55%	0.81%
Media & Communications	(5.86%)	(1.68%)	8.45%	6.03%	3.52%	4.88%	2.80%	(3.89%)	6.09%	2.85%	0.23%	1.34%
Real Estate & REITs	(7.23%)	(3.51%)	11.82%	9.26%	(4.98%)	2.03%	2.03%	(7.89%)	4.65%	2.06%	7.89%	5.25%
Technology	(6.05%)	(0.93%)	12.87%	4.59%	2.28%	5.21%	1.23%	(5.68%)	8.13%	8.44%	(1.37%)	0.85%
Utilities	(5.39%)	0.35%	5.40%	2.73%	(3.42%)	1.43%	6.85%	1.59%	8.73%	(5.38%)	7.11%	4.45%

Note: Data as of 08/30/2024; monthly total returns are used; CRSP US Sector Indexes monthly total returns are for constrained indexes, meaning that securities' weights within sector indexes are adjusted to comply with IRS Regulated Investment Company rules; after 9/5/2023, CRSP U.S. Sector Indexes use ICE's Uniform Entity Sectors classification system; CRSP U.S. Sector Indexes were based on Enhanced ICB (EICB) methodology between 6/7/2020 and 9/5/2023

CRSP U.S. CAP AND STYLE INDEXES PERFORMANCE

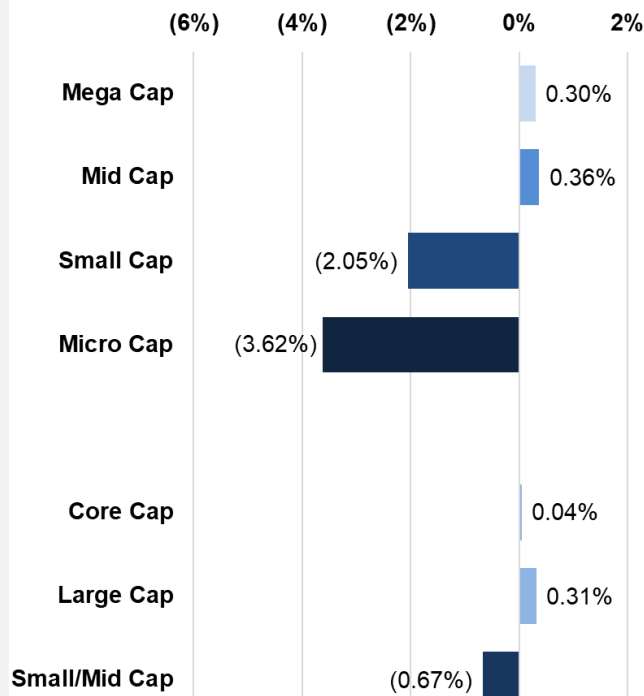
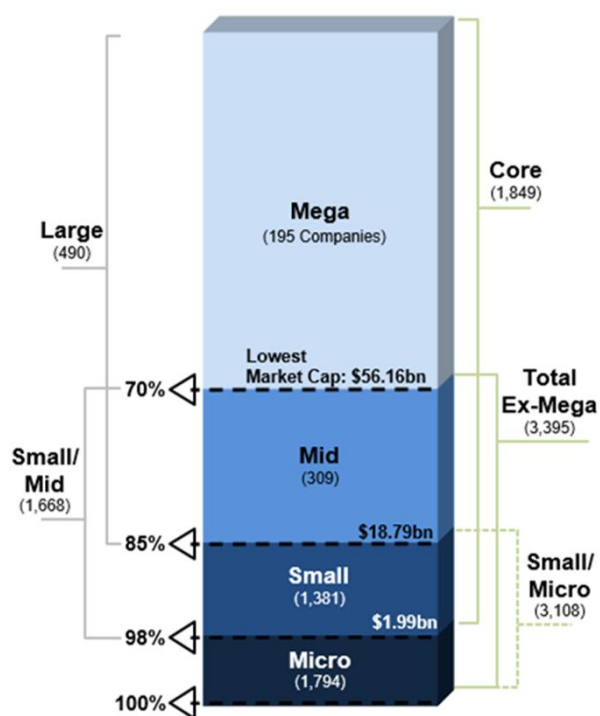
CRSP U.S. Cap and Style Indexes Performance

Category	Index Name	Index Ticker	Count	Float-Adjusted Market Cap (\$M)	Return for						
					1 Month	3 Months	YTD	1 Year	3 Years	5 Years	10 Years
Total Market	CRSP U.S. Total Market	CRSPTMT	3,576	\$54,179,608	2.17%	7.31%	18.17%	26.17%	7.71%	15.11%	12.32%
Cap	CRSP U.S. Mega Cap	CRSPMET	195	\$39,639,676	2.47%	7.80%	20.86%	28.98%	9.76%	16.76%	13.53%
	CRSP U.S. Mid Cap	CRSPMIT	309	\$8,020,287	2.53%	6.01%	11.89%	19.48%	2.98%	11.13%	9.60%
	CRSP U.S. Small Cap	CRSPSCT	1,381	\$5,888,754	0.12%	5.47%	10.17%	17.91%	2.55%	10.48%	8.79%
	CRSP U.S. Micro Cap	CRSPMCT	1,794	\$630,892	(1.45%)	8.71%	10.58%	17.71%	(4.51%)	8.15%	7.16%
	CRSP U.S. Core Cap	CRSPXMT	1,849	\$53,548,716	2.21%	7.29%	18.27%	26.28%	7.89%	15.21%	12.39%
	CRSP U.S. Large Cap	CRSPLCT	490	\$47,659,963	2.48%	7.51%	19.31%	27.35%	8.58%	15.81%	12.87%
	CRSP U.S. Total Market ex-Mega Cap	CRSPXET	3,395	\$14,539,932	1.36%	5.91%	11.13%	18.75%	2.41%	10.71%	9.14%
Value	CRSP U.S. Small/Mid Cap	CRSPSMT	1,668	\$13,909,041	1.50%	5.78%	11.15%	18.81%	2.79%	10.84%	-
	CRSP U.S. Small/Micro Cap	CRSPMST	3,108	\$6,519,645	(0.04%)	5.78%	10.21%	17.88%	1.75%	10.23%	8.61%
	CRSP U.S. Mega Value	CRSPMEVT	133	\$17,407,881	2.97%	8.40%	18.08%	24.35%	10.29%	13.00%	10.79%
	CRSP U.S. Mid Value	CRSPMIVT	185	\$4,439,132	3.03%	7.53%	14.61%	21.94%	6.52%	11.19%	8.93%
	CRSP U.S. Small Value	CRSPSCVT	830	\$3,365,701	0.23%	6.21%	11.49%	20.48%	6.72%	12.09%	8.78%
Growth	CRSP U.S. Core Value	CRSPXMT	1,232	\$25,280,106	2.49%	7.73%	16.31%	23.08%	9.16%	12.62%	10.28%
	CRSP U.S. Large Value	CRSPLCVT	335	\$22,070,139	2.88%	7.97%	17.16%	23.52%	9.58%	12.66%	10.48%
	CRSP U.S. Small/Mid Value	CRSPSMVT	1,025	\$7,870,492	1.91%	7.00%	13.73%	21.64%	6.81%	11.68%	-
	CRSP U.S. Mega Growth	CRSPMEGT	70	\$8,852,380	2.52%	7.77%	21.69%	31.25%	8.87%	19.79%	15.98%
	CRSP U.S. Mid Growth	CRSPMIGT	138	\$3,581,156	1.92%	4.15%	8.68%	16.57%	(0.68%)	10.64%	10.03%
	CRSP U.S. Small Growth	CRSPSCGT	616	\$2,523,052	(0.03%)	4.52%	8.45%	14.62%	(3.06%)	7.72%	8.32%
	CRSP U.S. Core Growth	CRSPXMT	722	\$28,268,610	1.97%	6.85%	19.94%	29.08%	6.62%	17.45%	14.39%
CRSP U.S. Large Growth	CRSPLCGT	184	\$6,209,006	2.28%	7.16%	21.17%	30.66%	7.67%	18.54%	15.10%	
CRSP U.S. Small/Mid Growth	CRSPSMGT	721	\$6,038,548	0.97%	4.24%	7.95%	15.30%	(1.78%)	9.40%	-	

Note: Data as of 08/30/2024; returns computation is based on total returns; data for 3-, 5-, and 10-years is annualized; counts may not add up due to packaging, see appendix; CRSP U.S. Mega and Large Growth securities' weights are adjusted to comply with IRS Regulated Investment Company (RIC) rules; CRSP U.S. Core Cap, Core Value, Core Growth, Total Market ex-Mega Cap and Small/Micro Cap data is based on backtest prior to 12/4/2023.

CRSP Breakpoints (June 2024 Ranking)

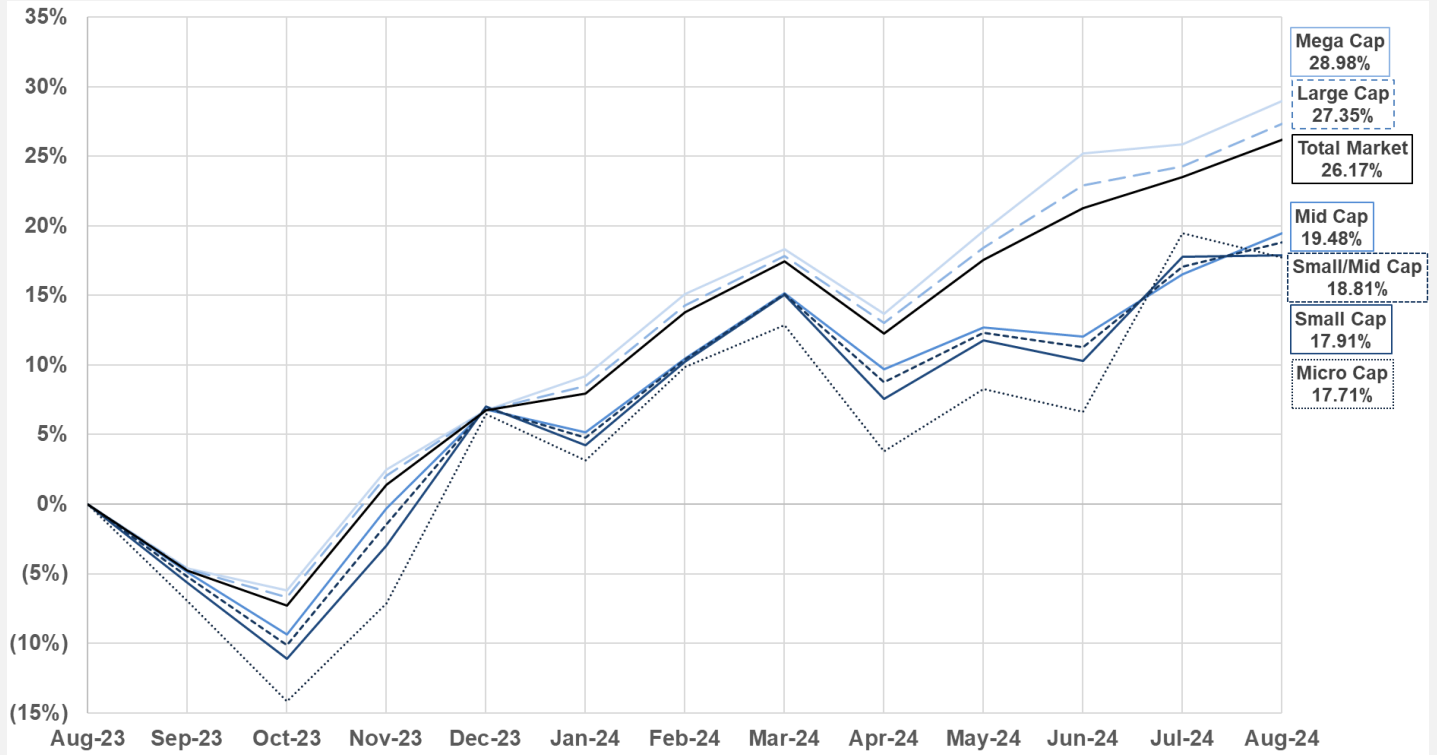
August 2024: Returns Relative to Total Market



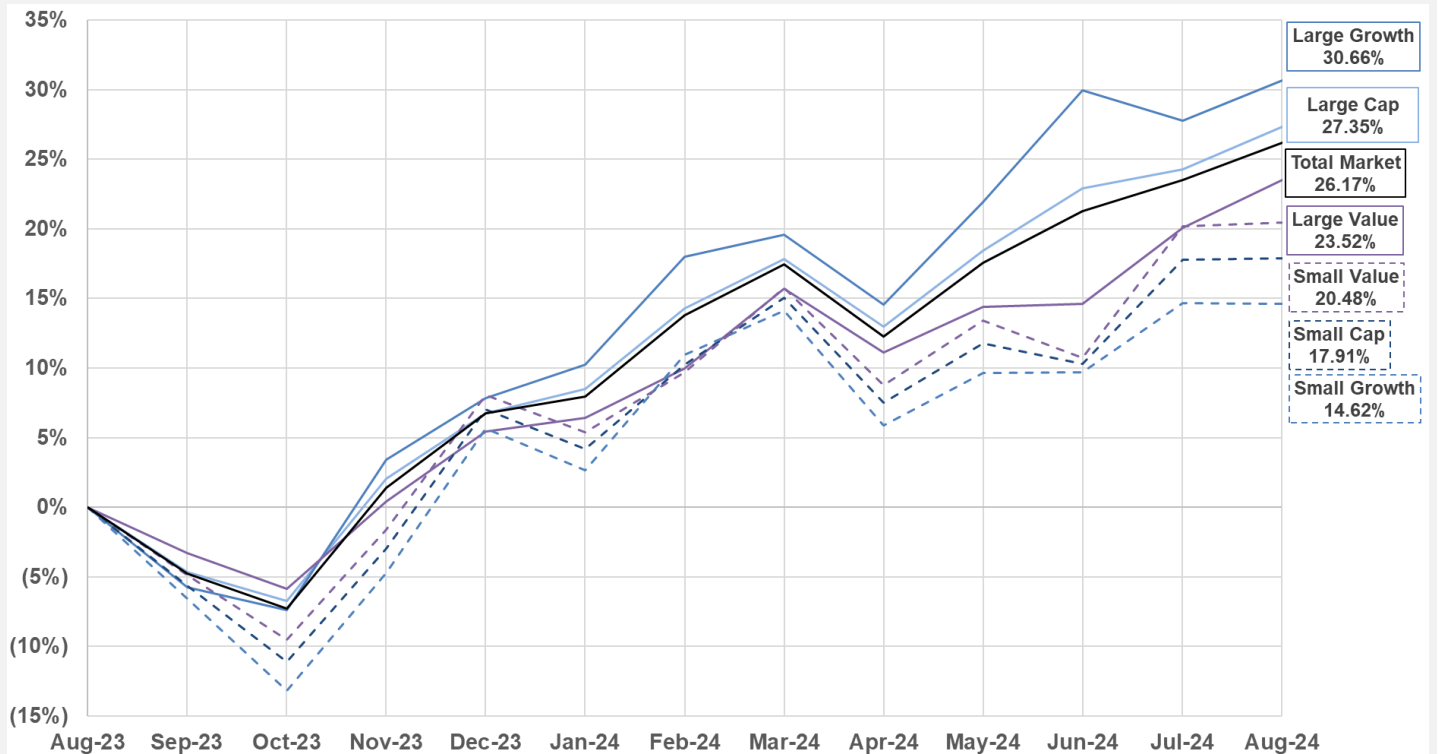
Note: Data for lowest market capitalization is based on 05/31/2024 random price date; company counts as of 08/30/2024; counts may not add up due to packaging, see appendix

Note: Data as of 08/30/2024; returns computation is based on total returns

Cumulative Performance By Capitalization – Past 12 Months



Cumulative Performance By Style – Past 12 Months



Note: Data as of 08/30/2024; returns computation is based on total returns

CRSP Market Cap Indexes Sector Allocation



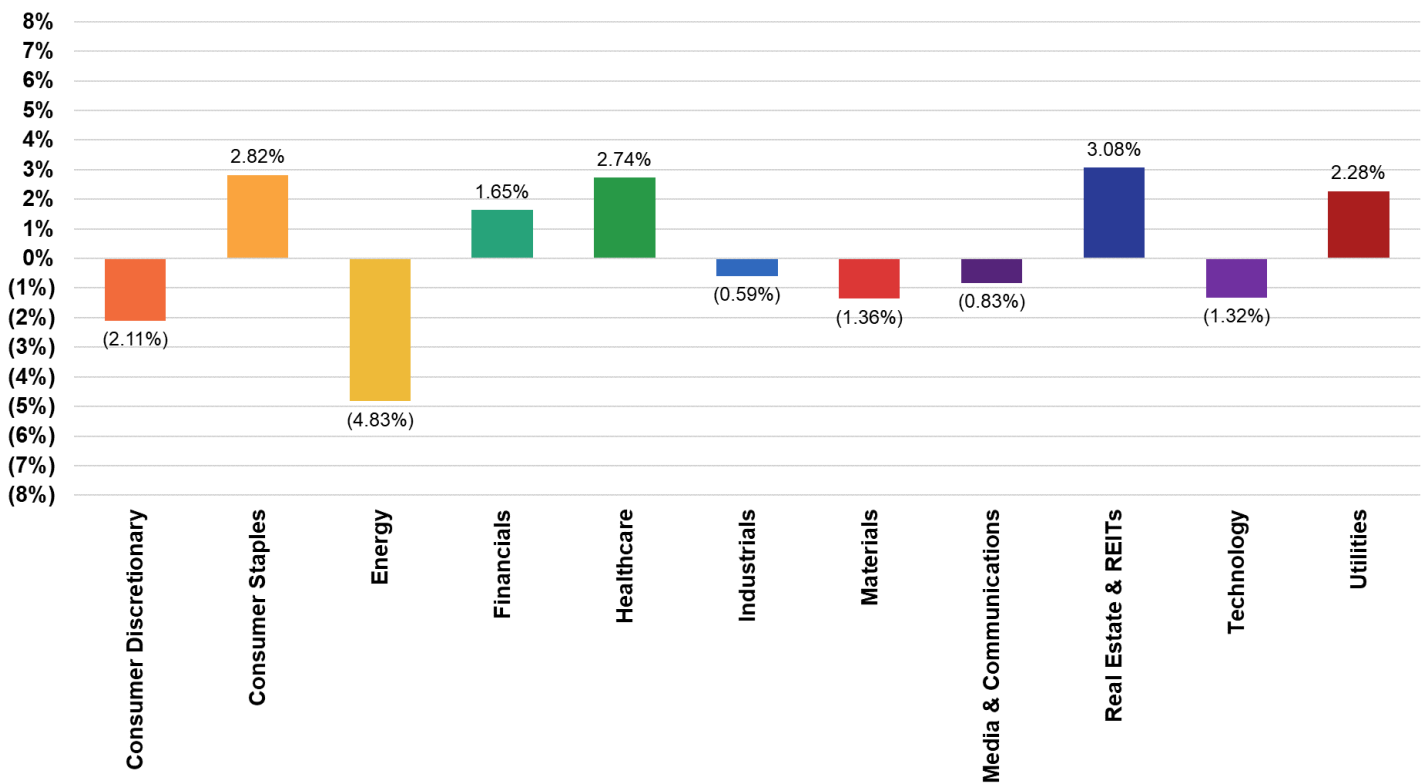
Note: Data as of 08/30/2024; Sector weights are computed using company's assignment to the industry as defined by ICE's Uniform Entity Sectors classification system; sector weights are based on float-adjusted market cap weights

CRSP U.S. SECTOR INDEXES PERFORMANCE

CRSP U.S. Sector Indexes Performance

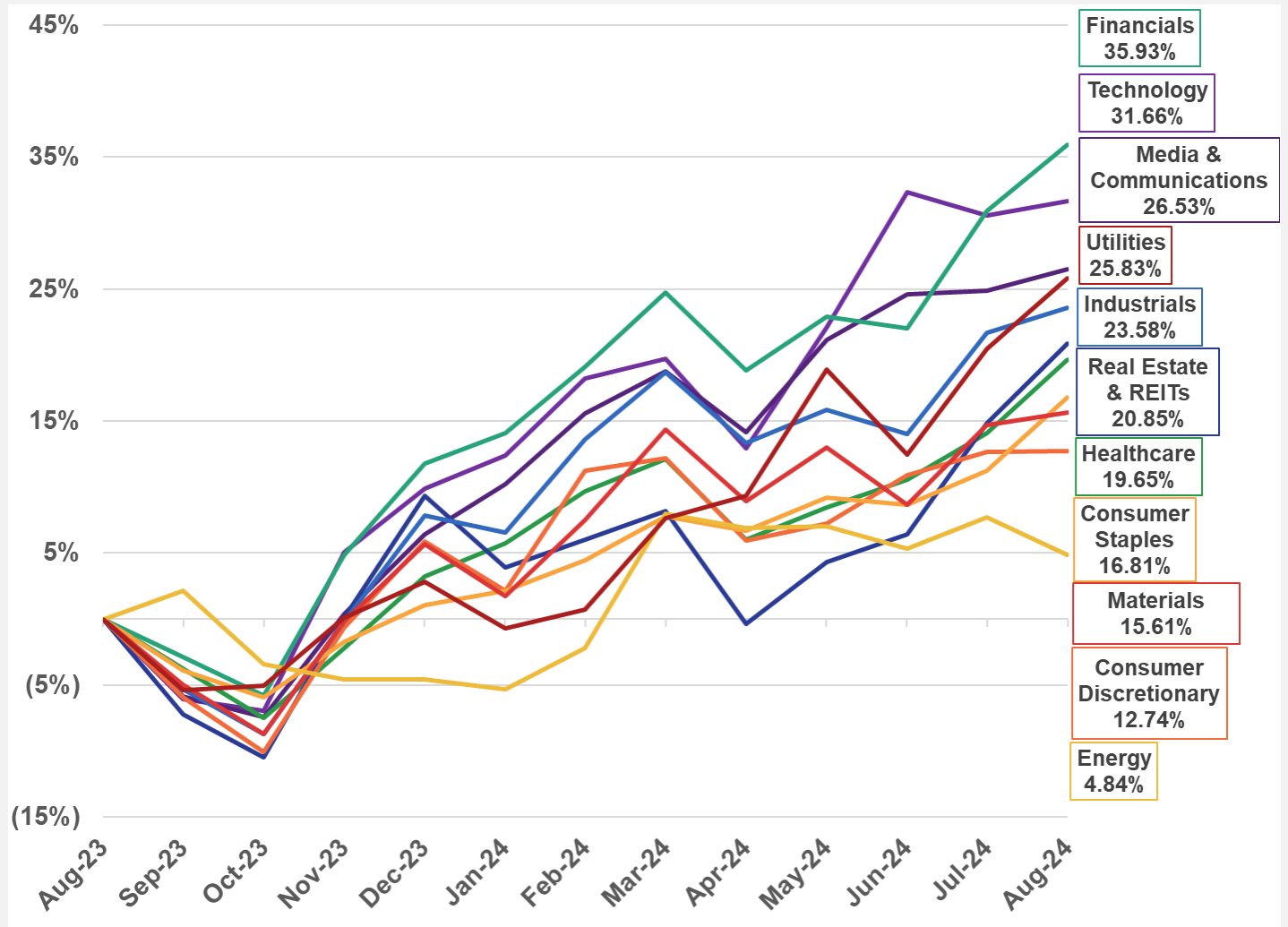
Category	Index Name	Index Ticker	Count	Float-Adjusted Market Cap (\$M)	Return for						
					1 Month	3 Months	YTD	1 Year	3 Years	5 Years	10 Years
Total Market	CRSP U.S. Total Market	CRSPTMT	3,576	\$54,179,608	2.17%	7.31%	18.17%	26.17%	7.71%	15.11%	12.32%
Sector Indexes	CRSP U.S. Consumer Discretionary	CRSPCDT	382	\$5,691,553	0.06%	5.11%	6.51%	12.74%	(0.66%)	10.22%	11.31%
	CRSP U.S. Consumer Staples	CRSPCST	143	\$2,651,870	4.99%	6.97%	15.55%	16.81%	8.29%	11.17%	8.97%
	CRSP U.S. Energy	CRSPENT	150	\$1,967,171	(2.66%)	(2.03%)	9.88%	4.84%	25.96%	14.95%	2.14%
	CRSP U.S. Financials	CRSPFNT	623	\$7,581,014	3.82%	10.61%	21.61%	35.93%	8.18%	13.65%	11.94%
	CRSP U.S. Health Care	CRSPHCT	774	\$6,697,283	4.91%	10.34%	15.90%	19.65%	4.19%	12.35%	10.92%
	CRSP U.S. Industrials	CRSPIDT	506	\$5,570,481	1.58%	6.70%	14.59%	23.58%	6.31%	12.51%	11.64%
	CRSP U.S. Materials	CRSPMTT	148	\$1,339,569	0.81%	2.32%	9.38%	15.61%	6.50%	13.98%	7.80%
	CRSP U.S. Media & Communications	CRSPMET	140	\$4,333,919	1.34%	4.47%	18.87%	26.53%	(0.08%)	8.56%	6.23%
	CRSP U.S. Real Estate & REITs	CRSPRET	191	\$1,547,528	5.25%	15.89%	10.50%	20.85%	(0.26%)	4.62%	7.16%
	CRSP U.S. Technology	CRSPITT	450	\$15,523,398	0.85%	7.86%	19.82%	31.66%	10.40%	24.30%	20.15%
CRSP U.S. Utilities	CRSPUTT	69	\$1,275,822	4.45%	5.86%	22.40%	25.83%	7.45%	7.80%	9.70%	

August 2024: Sector Returns Relative to Total Market



Note: Data as of 08/30/2024; returns computation is based on total returns; data for 3-, 5-, and 10-years is annualized. CRSP US Sector Indexes monthly total returns are for constrained indexes, meaning that securities' weights within sector indexes are adjusted to comply with IRS Regulated Investment Company (RIC) rules. CRSP U.S. Technology, CRSP U.S. Media & Communications, CRSP U.S. Consumer Discretionary, CRSP U.S. Consumer Staples, and CRSP U.S. Energy Sector Indexes are currently constrained in order to comply with the IRS RIC rules, the market caps displayed for these indexes are for unconstrained indexes; after 9/5/2023, CRSP U.S. Sector Indexes use ICE's Uniform Entity Sectors classification system; CRSP U.S. Sector Indexes were based on Enhanced ICB (EICB) methodology between 6/7/2020 and 9/5/2023; CRSP U.S. Sector Indexes were based on ICB methodology prior to 6/5/2020

Cumulative Performance By Sector – Past 12 Months



Note: Data as of 08/30/2024; returns computation is based on total returns; CRSP US Sector Indexes monthly total returns are for constrained indexes, meaning that securities' weights within sector indexes are adjusted to comply with IRS Regulated Investment Company rules; after 9/5/2023, CRSP U.S. Sector Indexes use ICE's Uniform Entity Sectors classification system; CRSP U.S. Sector Indexes were based on Enhanced ICB (EICB) methodology between 6/7/2020 and 9/5/2023

CRSP ISS U.S. LARGE CAP ESG INDEXES PERFORMANCE

To learn more about CRSP ISS ESG Indexes Suite visit our webpage: <https://www.crsp.org/indexes/>

CRSP ISS U.S. Large Cap ESG Indexes Performance

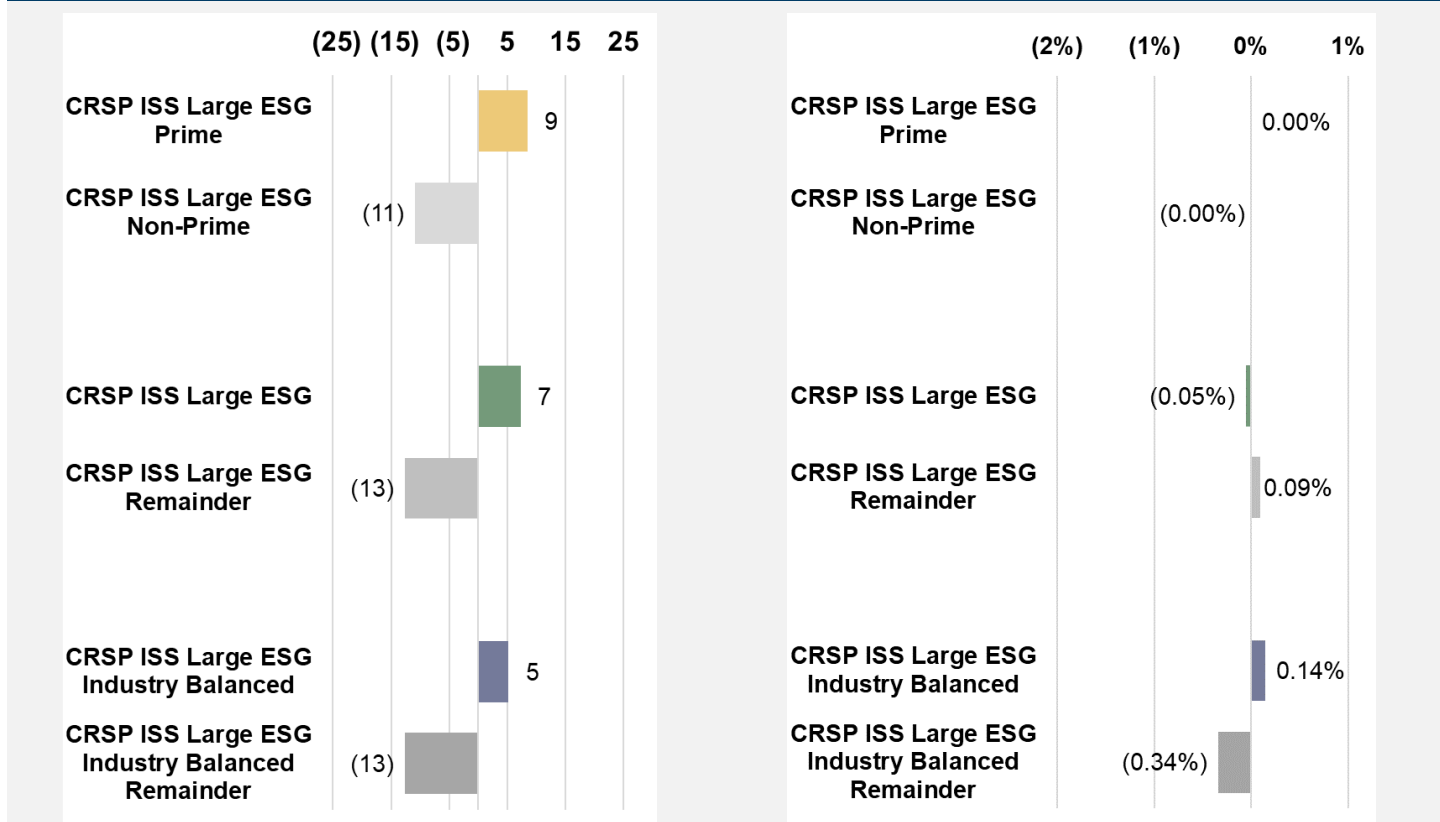
Category	Index Name	Index Ticker	Count	Float-Adjusted Market Cap (\$M)	Return for					
					1 Month	3 Months	YTD	1 Year	3 Years	5 Years
	CRSP U.S. Large Cap	CRSPLCT	490	\$47,659,963	2.48%	7.51%	19.31%	27.35%	8.58%	15.81%
Prime	CRSP ISS Large ESG Prime	CLESGPT	191	\$26,759,983	2.48%	8.06%	20.72%	28.27%	11.27%	21.07%
	CRSP ISS Large ESG Non-Prime	CLESGNPT	299	\$20,899,979	2.48%	6.90%	17.68%	26.23%	6.15%	12.48%
ESG	CRSP ISS Large ESG	CLESGT	245	\$30,048,967	2.42%	7.71%	19.10%	26.77%	8.68%	16.45%
	CRSP ISS Large ESG Remainder	CLESGRT	245	\$17,610,995	2.57%	7.01%	19.57%	28.38%	8.42%	14.32%
ESG Industry Balanced	CRSP ISS Large ESG Industry Balanced	CLESGBT	248	\$33,671,923	2.62%	7.82%	20.58%	28.62%	8.83%	16.07%
	CRSP ISS Large ESG Industry Balanced Remainder	CLESGBRT	242	\$13,988,039	2.14%	6.76%	16.40%	24.41%	8.19%	15.29%

Note: Data as of 08/30/2024; returns computation is based on total returns; data for 3- and 5-years is annualized; Prior to 9/7/2021 the CRSP ISS ESG Indexes return series is based on a backtest

For definitions of ISS Prime Indicator, ISS ESG Performance Score see Appendix. For more information on ISS ESG Methodology please visit <https://www.issgovernance.com/esg/ratings/>.

Portfolio ISS ESG Performance Score relative to CRSP US Large Cap

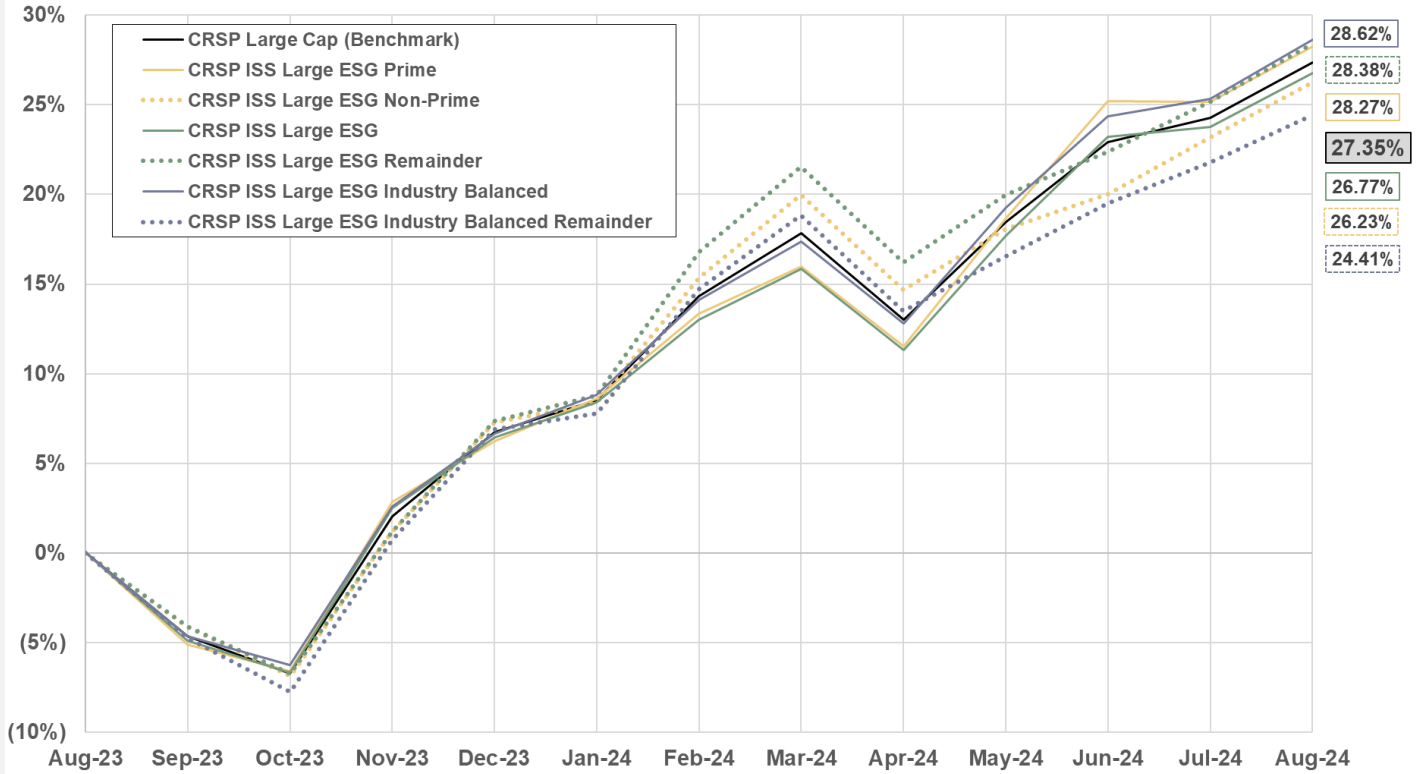
August 2024: Returns Relative to CRSP US Large Cap



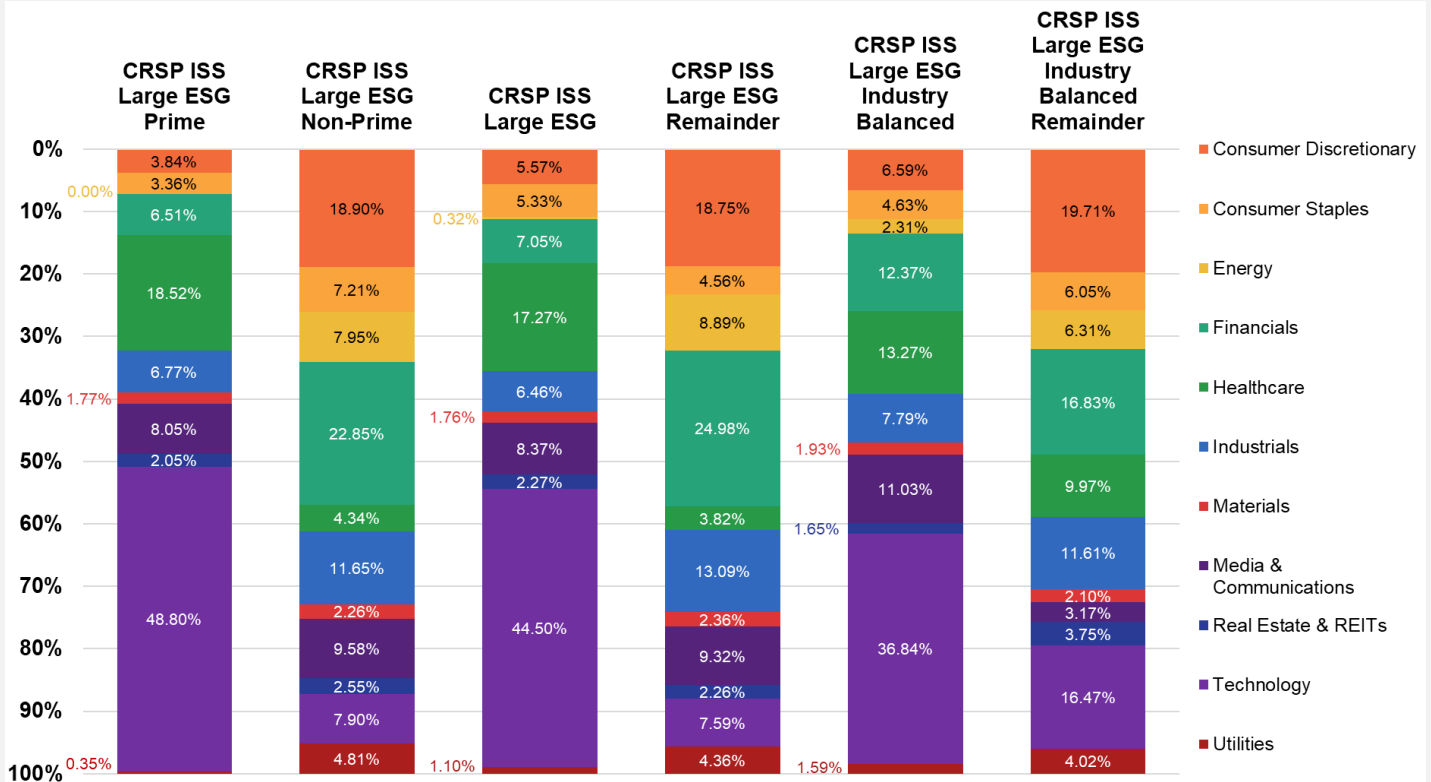
Note: Data as of 08/30/2024. Portfolio ISS ESG Performance Score is computed by weighting securities' ISS ESG Performance Score by the corresponding weight in the index

Note: Data as of 08/30/2024; returns computation is based on total returns

Cumulative Performance For CRSP ISS ESG Indexes – Past 12 Months



CRSP ISS ESG Indexes Sector Allocation



Note: Data as of 08/30/2024; returns computation is based on total returns; Sector weights are computed using company's assignment to the industry as defined by ICE's Uniform Entity Sectors classification system; sector weights are based on float-adjusted market cap weights

APPENDIX – CRSP U.S. INDEXES DESCRIPTIVE INFORMATION

CRSP U.S. Indexes Descriptive Statistics

Category	Index Name	Count	Float-Adjusted Market Cap (\$M)	Largest Company (\$M)	Smallest Company (\$M)	Median Company (\$M)	Average Company (\$M)	Largest Company Weight (%)
Total Market	CRSP U.S. Total Market	3,576	\$54,179,608	\$3,335,930	<\$1	\$941	\$15,151	6.16%
Cap	CRSP U.S. Mega Cap	195	\$39,639,676	\$3,335,930	\$14,900	\$100,939	\$203,280	8.42%
	CRSP U.S. Mid Cap	309	\$8,020,287	\$81,021	\$476	\$23,595	\$25,956	1.01%
	CRSP U.S. Small Cap	1,381	\$5,888,754	\$32,570	\$34	\$2,996	\$4,264	0.55%
	CRSP U.S. Micro Cap	1,794	\$630,892	\$4,896	<\$1	\$154	\$352	0.78%
	CRSP U.S. Core Cap	1,849	\$53,548,716	\$3,335,930	\$34	\$4,863	\$28,961	6.23%
	CRSP U.S. Large Cap	490	\$47,659,963	\$3,335,930	\$476	\$37,692	\$97,265	7.00%
	CRSP U.S. Total Market ex-Mega Cap	3,395	\$14,539,932	\$81,021	<\$1	\$785	\$4,283	0.56%
	CRSP U.S. Small/Mid Cap	1,668	\$13,909,041	\$81,021	\$34	\$3,945	\$8,339	0.58%
	CRSP U.S. Small/Micro Cap	3,108	\$6,519,645	\$32,570	<\$1	\$611	\$2,098	0.50%
Value	CRSP U.S. Mega Value	133	\$17,407,881	\$865,544	\$19,414	\$92,357	\$130,886	4.97%
	CRSP U.S. Mid Value	185	\$4,439,132	\$63,927	\$949	\$21,449	\$23,995	1.44%
	CRSP U.S. Small Value	830	\$3,365,701	\$24,631	\$17	\$2,873	\$4,055	0.73%
	CRSP U.S. Core Value	1,232	\$25,280,106	\$865,544	\$34	\$4,471	\$20,520	3.42%
	CRSP U.S. Large Value	335	\$22,070,139	\$865,544	\$949	\$34,022	\$65,881	3.92%
	CRSP U.S. Small/Mid Value	1,025	\$7,870,492	\$73,727	\$34	\$3,624	\$7,679	0.94%
Growth	CRSP U.S. Mega Growth	70	\$8,852,380	\$1,200,440	\$14,832	\$52,950	\$126,463	13.56%
	CRSP U.S. Mid Growth	138	\$3,581,156	\$81,021	\$476	\$22,983	\$25,950	2.26%
	CRSP U.S. Small Growth	616	\$2,523,052	\$32,570	\$17	\$2,747	\$4,096	1.29%
	CRSP U.S. Core Growth	722	\$28,268,610	\$3,335,930	\$57	\$4,638	\$39,153	11.80%
	CRSP U.S. Large Growth	184	\$6,209,006	\$808,910	\$476	\$9,547	\$33,745	13.03%
	CRSP U.S. Small/Mid Growth	721	\$6,038,548	\$81,021	\$52	\$3,909	\$8,375	1.34%
Prime	CRSP ISS Large ESG Prime	191	\$26,759,983	\$3,335,930	\$2,762	\$42,792	\$140,105	12.47%
	CRSP ISS Large ESG Non-Prime	299	\$20,899,979	\$1,671,825	\$476	\$34,561	\$69,900	8.00%
ESG	CRSP ISS Large ESG	245	\$30,048,967	\$3,335,930	\$2,762	\$42,167	\$122,649	11.10%
	CRSP ISS Large ESG Remainder	245	\$17,610,995	\$1,671,825	\$476	\$34,022	\$71,882	9.49%
ESG Industry Balanced	CRSP ISS Large ESG Industry Balanced	248	\$33,671,923	\$3,335,930	\$2,762	\$48,051	\$135,774	9.91%
	CRSP ISS Large ESG Industry Balanced Remainder	242	\$13,988,039	\$1,671,825	\$476	\$29,013	\$57,802	11.95%
Sector Indexes	CRSP U.S. Consumer Discretionary	382	\$5,691,553	\$1,671,825	\$2	\$882	\$14,899	29.37%
	CRSP U.S. Consumer Staples	143	\$2,651,870	\$404,858	\$2	\$1,282	\$18,545	15.27%
	CRSP U.S. Energy	150	\$1,967,171	\$529,070	\$4	\$1,100	\$13,114	26.89%
	CRSP U.S. Financials	623	\$7,581,014	\$865,544	\$2	\$910	\$12,169	11.42%
	CRSP U.S. Health Care	774	\$6,697,283	\$821,167	<\$1	\$307	\$8,653	12.26%
	CRSP U.S. Industrials	506	\$5,570,481	\$214,994	\$2	\$1,978	\$11,009	3.86%
	CRSP U.S. Materials	148	\$1,339,569	\$229,883	\$4	\$2,334	\$9,051	17.16%
	CRSP U.S. Media & Communications	140	\$4,333,919	\$1,748,004	\$3	\$623	\$30,957	40.33%
	CRSP U.S. Real Estate & REITs	191	\$1,547,528	\$118,341	\$4	\$1,851	\$8,102	7.65%
	CRSP U.S. Technology	450	\$15,523,398	\$3,335,930	\$3	\$1,260	\$34,496	21.49%
	CRSP U.S. Utilities	69	\$1,275,822	\$165,448	\$138	\$5,348	\$18,490	12.97%

Note: Data as of 08/30/2024; counts may not add up due to packaging, see appendix; CRSP U.S. Mega Cap and Large Cap Growth and certain CRSP U.S. Sector Indexes are constrained indexes, meaning that securities' weights within sector indexes are adjusted to comply with IRS Regulated Investment Company (RIC) rules; the market caps displayed for these indexes are for unconstrained indexes; after 9/5/2023, CRSP U.S. Sector Indexes use ICE's Uniform Entity Sectors classification system; CRSP U.S. Sector Indexes were based on Enhanced ICB (EICB) methodology between 6/7/2020 and 9/5/2023; CRSP U.S. Sector Indexes were based on ICB methodology prior to 6/5/2020

APPENDIX – INDEX REFERENCE GUIDE

Index	Index Name (TR - Total Return, PR - Price Only Return)	Index Identifier	CUSIP	Inception Date
Total Market Index	CRSP US Total Market Index (TR)	CRSPTMT	12628H109	4/1/2011
	CRSP US Total Market Index (PR)	CRSPTM1	12628G101	4/1/2011
CRSP Australian Hedged Index	CRSP US Total Market Index (AUD-hedged) (TR)	CRSPTAHT	12633D200	6/30/2015
	CRSP US Total Market Index (AUD-hedged) (PR)	CRSPTAH1	12633D101	6/30/2015
CRSP Australian Non-Hedged Index	CRSP US Total Market Total Return Index AUD (TR)	CRSPTMAT	12633D408	6/30/2015
	CRSP US Total Market Index AUD (PR)	CRSPTMA1	12633D309	6/30/2015
CRSP Canadian Hedged Index	CRSP US Total Market Index (CAD-hedged) (TR)	CRSPTCHT	12630Y108	8/3/2020
	CRSP US Total Market Index (CAD-hedged) (PR)	CRSPTCH1	12628G200	8/3/2020
CRSP Canadian Non-Hedged Index	CRSP US Total Market Total Return Index CAD (TR)	CRSPTMCT	12632P204	8/3/2020
	CRSP US Total Market Index CAD (PR)	CRSPTMC1	12632M201	8/3/2020
Core Cap (Mega + Mid + Small)	CRSP US Core Cap Index (TR)	CRSPXMT	12666H102	12/4/2023
	CRSP US Core Cap Index (PR)	CRSPXM1	12666H201	12/4/2023
Core Growth	CRSP US Core Cap Growth Index (TR)	CRSPXMG1	12671U106	12/4/2023
	CRSP US Core Cap Growth Index (PR)	CRSPXMG1	12671U205	12/4/2023
Core Value	CRSP US Core Cap Value Index (TR)	CRSPXMVT	12671T109	12/4/2023
	CRSP US Core Cap Value Index (PR)	CRSPXMV1	12671T208	12/4/2023
Mega Cap	CRSP US Mega Cap Index (TR)	CRSPMET	12631H104	4/1/2011
	CRSP US Mega Cap Index (PR)	CRSPME1	12627R108	4/1/2011
Mega Cap Growth	CRSP US Mega Cap Growth Index (TR)	CRSPMEGT	12631K107	9/10/2012
	CRSP US Mega Cap Growth Index (PR)	CRSPMEG1	12630R103	9/10/2012
Mega Cap Value	CRSP US Mega Cap Value Index (TR)	CRSPMEVT	12631L105	9/10/2012
	CRSP US Mega Cap Value Index (PR)	CRSPMEV1	12630T109	9/10/2012
Large Cap (Mega + Mid)	CRSP US Large Cap Index (TR)	CRSPLCT	12631M103	4/1/2011
	CRSP US Large Cap Index (PR)	CRSPLC1	12627P102	4/1/2011
Large Cap Growth	CRSP US Large Cap Growth Index (TR)	CRSPLCG1	12631P106	9/10/2012
	CRSP US Large Cap Growth Index (PR)	CRSPLCG1	12630W102	9/10/2012
Large Cap Value	CRSP US Large Cap Value Index (TR)	CRSPLCVT	12631R102	9/10/2012
	CRSP US Large Cap Value Index (PR)	CRSPLCV1	12630X100	9/10/2012
Mid Cap	CRSP US Mid Cap Index (TR)	CRSPMIT	12631T108	4/1/2011
	CRSP US Mid Cap Index (PR)	CRSPMI1	12627W107	4/1/2011
Mid Cap Growth	CRSP US Mid Cap Growth Index (TR)	CRSPMIGT	12628N106	9/10/2012
	CRSP US Mid Cap Growth Index (PR)	CRSPMIG1	12631A109	9/10/2012
Mid Cap Value	CRSP US Mid Cap Value Index (TR)	CRSPMIVT	12629L109	9/10/2012
	CRSP US Mid Cap Value Index (PR)	CRSPMIV1	12631C105	9/10/2012
Small-Mid Cap	CRSP US Small-Mid Cap Index (TR)	CRSPSMT	12591C103	2/7/2014
	CRSP US Small-Mid Cap Index (PR)	CRSPSM1	12632T107	2/7/2014
Small-Mid Cap Growth	CRSP US Small-Mid Cap Growth Index (TR)	CRSPSMGT	12591P104	2/7/2014
	CRSP US Small-Mid Cap Growth Index (PR)	CRSPSMG1	12591M101	2/7/2014
Small-Mid Cap Value	CRSP US Small-Mid Cap Value Index (TR)	CRSPSMVT	12591L103	2/7/2014
	CRSP US Small-Mid Cap Value Index (PR)	CRSPSMV1	12591E109	2/7/2014
Small Cap	CRSP US Small Cap Index (TR)	CRSPSCT	12630N102	4/1/2011
	CRSP US Small Cap Index (PR)	CRSPSC1	12628A104	4/1/2011
Small Cap Growth	CRSP US Small Cap Growth Index (TR)	CRSPSCGT	12630V104	9/10/2012
	CRSP US Small Cap Growth Index (PR)	CRSPSCG1	12631E101	9/10/2012
Small Cap Value	CRSP US Small Cap Value Index (TR)	CRSPSCVT	12631N101	9/10/2012
	CRSP US Small Cap Value Index (PR)	CRSPSCV1	12631F108	9/10/2012
Micro Cap Index	CRSP US Micro Cap Index (TR)	CRSPMCT	12631V103	4/1/2011
	CRSP US Micro Cap Index (PR)	CRSPMC1	12627T104	4/1/2011
ex-Mega Cap	CRSP US Total Market ex-Mega Cap Index (TR)	CRSPXET	12666J108	12/4/2023
	CRSP US Total Market ex-Mega Cap Index (PR)	CRSPXE1	12666J207	12/4/2023
Small-Micro Cap	CRSP US Small-Micro Cap Index (TR)	CRSPMST	12671M104	12/4/2023
	CRSP US Small-Micro Cap Index (PR)	CRSPMS1	12671M203	12/4/2023
CRSP ISS ESG Prime	CRSP ISS US Large Cap ESG Prime Index (TR)	CLESGPT	12657Y205	9/7/2021
	CRSP ISS US Large Cap ESG Prime Index (PR)	CLESGP	12657Y106	9/7/2021
CRSP ISS ESG Non-Prime	CRSP ISS US Large Cap ESG Non-Prime Index (TR)	CLESGNPT	12658A206	9/7/2021
	CRSP ISS US Large Cap ESG Non-Prime Index (PR)	CLESGNP	12658A107	9/7/2021
CRSP ISS ESG	CRSP ISS US Large Cap ESG Index (TR)	CLESGT	12658D200	9/7/2021
	CRSP ISS US Large Cap ESG Index (PR)	CLESG	12658D101	9/7/2021
CRSP ISS ESG Remainder	CRSP ISS US Large Cap ESG Remainder Index (TR)	CLESGRT	12658E208	9/7/2021
	CRSP ISS US Large Cap ESG Remainder Index (PR)	CLESGR	12658E109	9/7/2021
CRSP ISS ESG Industry Balanced	CRSP ISS US Large Cap ESG Industry Balanced Index (TR)	CLESGBT	12658F205	9/7/2021
	CRSP ISS US Large Cap ESG Industry Balanced Index (PR)	CLESGB	12658F106	9/7/2021
CRSP ISS ESG Industry Balanced Remainder	CRSP ISS US Large Cap ESG Industry Balanced Remainder Index (TR)	CLESGBRT	12658K204	9/7/2021
	CRSP ISS US Large Cap ESG Industry Balanced Remainder Index (PR)	CLESGBR	12658K105	9/7/2021

Index	Index Name (TR - Total Return, PR - Price Only Return)	Index Identifier	CUSIP	Inception Date
Consumer Discretionary	CRSP US Consumer Discretionary Index (TR)	CRSPCDT	12631X109	2/1/2012
	CRSP US Consumer Discretionary Index (PR)	CRSPCD1	12630J101	2/1/2012
Consumer Staples	CRSP US Consumer Staples Index (TR)	CRSPCST	12631W101	2/1/2012
	CRSP US Consumer Staples Index (PR)	CRSPCS1	12630G107	2/1/2012
Energy	CRSP US Energy Index (TR)	CRSPENT	12631Y107	2/1/2012
	CRSP US Energy Index (PR)	CRSPEN1	12630A100	2/1/2012
Financials	CRSP US Financials Index (TR)	CRSPFNT	12632A108	2/1/2012
	CRSP US Financials Index (PR)	CRSPFN1	12630M104	2/1/2012
Healthcare	CRSP US Healthcare Index (TR)	CRSPHCT	12632C104	2/1/2012
	CRSP US Healthcare Index (PR)	CRSPHC1	12630H105	2/1/2012
Industrials	CRSP US Industrials Index (TR)	CRSPIDT	12632E100	2/1/2012
	CRSP US Industrials Index (PR)	CRSPID1	12630F109	2/1/2012
Materials	CRSP US Materials Index (TR)	CRSPMTT	12632G105	2/1/2012
	CRSP US Materials Index (PR)	CRSPMT1	12630E102	2/1/2012
Media & Communications	CRSP US Media & Communications Index (TR)	CRSPTET	12632H103	2/1/2012
	CRSP US Media & Communications Index (PR)	CRSPTE1	12630K108	2/1/2012
Real Estate & REITs	CRSP US Real Estate & REITs Index (TR)	CRSPRET	12632K106	4/1/2011
	CRSP US Real Estate & REITs Index (PR)	CRSPRE1	12627X105	4/1/2011
Technology	CRSP US Technology Index (TR)	CRSPITT	12632F107	2/1/2012
	CRSP US Technology Index (PR)	CRSPIT1	12630P107	2/1/2012
Utilities	CRSP US Utilities Index (TR)	CRSPUTT	12632J109	2/1/2012
	CRSP US Utilities Index (PR)	CRSPUT1	12630L106	2/1/2012
Small Cap ex-Real Estate	CRSP US Small Cap ex-Real Estate Index (TR)	CRSPSXT	12632L104	9/10/2012
	CRSP US Small Cap ex-Real Estate Index (PR)	CRSPSX1	12631G106	9/10/2012

APPENDIX – LIST OF ETFS/MUTUAL FUNDS USING CRSP INDEXES

ETFS

Index Information		Fund Information	
Name	Ticker	Ticker	URL
Mega Cap	CRSPMET	MGC	https://investor.vanguard.com/investment-products/etfs/profile/mgc
Mega Cap Growth	CRSPMEGT	MGK	https://investor.vanguard.com/investment-products/etfs/profile/mgk
Mega Cap Value	CRSPMEVT	MGV	https://investor.vanguard.com/investment-products/etfs/profile/mgv
Large Cap	CRSPLCT	VV	https://investor.vanguard.com/investment-products/etfs/profile/vv
Large Cap Growth	CRSPLCGT	VUG	https://investor.vanguard.com/investment-products/etfs/profile/vug
Large Cap Value	CRSPLCVT	VTV	https://investor.vanguard.com/investment-products/etfs/profile/vtv
Mid Cap	CRSPMIT	VO	https://investor.vanguard.com/investment-products/etfs/profile/vo
Mid Cap Growth	CRSPMIGT	VOT	https://investor.vanguard.com/investment-products/etfs/profile/vot
Mid Cap Value	CRSPMIVT	VOE	https://investor.vanguard.com/investment-products/etfs/profile/voe
Small Cap	CRSPSCT	VB	https://investor.vanguard.com/investment-products/etfs/profile/vb
Small Cap Growth	CRSPSCGT	VBK	https://investor.vanguard.com/investment-products/etfs/profile/vbk
Small Cap Value	CRSPSCVT	VBR	https://investor.vanguard.com/investment-products/etfs/profile/vbr
Total Market	CRSPTMT	VTI	https://investor.vanguard.com/investment-products/etfs/profile/vti
Canadian Hedged*	CRSPTCHT	VUS	https://www.vanguard.ca/en/advisor/products/products-group/etfs/VUS
Canadian Non-Hedged*	CRSPTMCT	VUN	https://www.vanguard.ca/en/advisor/products/products-group/etfs/VUN

MUTUAL FUNDS

Index Information		Fund Information	
Name	Ticker	Ticker	URL
Mega Cap	CRSPME1	VMCTX	https://investor.vanguard.com/investment-products/mutual-funds/profile/vmctx
Mega Cap Growth	CRSPMEG1	VMGAX	https://investor.vanguard.com/investment-products/mutual-funds/profile/vmgax
Mega Cap Value	CRSPMEV1	VMVLX	https://investor.vanguard.com/investment-products/mutual-funds/profile/vmvlx
Large Cap	CRSPLC1	VLCAX	https://investor.vanguard.com/investment-products/mutual-funds/profile/vlcax
Large Cap Growth	CRSPLCG1	VIGAX	https://investor.vanguard.com/investment-products/mutual-funds/profile/vigax
Large Cap Value	CRSPLCV1	VIVIX	https://investor.vanguard.com/investment-products/mutual-funds/profile/vivix
Mid Cap	CRSPMI1	VVAMCIV	https://advisors.vanguard.com/investments/products/0288/vanguard-variable-insurance-fund-mid-cap-index-portfolio
Mid Cap	CRSPMI1	VIMAX	https://investor.vanguard.com/investment-products/mutual-funds/profile/vimax
Mid Cap Growth	CRSPMIG1	VMGMX	https://investor.vanguard.com/investment-products/mutual-funds/profile/vmgmx
Mid Cap Value	CRSPMIV1	VMVAX	https://investor.vanguard.com/investment-products/mutual-funds/profile/vmvax
Small Cap	CRSPSC1	VSMAX	https://investor.vanguard.com/investment-products/mutual-funds/profile/vsmax
Small Cap Growth	CRSPSCG1	VSGAX	https://investor.vanguard.com/investment-products/mutual-funds/profile/vsgax
Small Cap Value	CRSPSCV1	VSIAX	https://investor.vanguard.com/investment-products/mutual-funds/profile/vsiax
Total Market	CRSPTM1	VTSAX	https://institutional.vanguard.com/investments/product-details/fund/0585
Total Market	CRSPTM1	VBIAX	https://investor.vanguard.com/investment-products/mutual-funds/profile/vbiax
Total Market	CRSPTM1	VITPX	https://investor.vanguard.com/investment-products/mutual-funds/profile/vitpx

APPENDIX – DEFINITIONS

Average Company: Average float-adjusted market capitalization of a company included in the index

Count: Number of companies contained within the index. A single company may have multiple securities associated with it. Counts for individual cap indexes may not add up to counts for the combined cap index due to packeting. For example, number of companies in Mega Cap Index plus number of companies in Mid Cap Index may not add up to number of companies in Large Cap. For more information regarding packeting please refer to the [CRSP Methodology](#).

Float-Adjusted Market Cap: Represents the float-adjusted market capitalization of a company as described in the [CRSP Methodology](#). For sector indexes that had to be constrained to comply with IRS Regulated Investment Company rules, it means that the company's float adjusted market cap may have been adjusted further per our methodology.

Inception Date: Inception Date indicates the first date that indexes were calculated contemporaneously with live market data. Data prior to inception date is based on a backtest calculation.

ISS ESG Performance Score: An ESG metric assigned by ISS based on its ISS ESG Corporate Rating, allowing direct comparisons of companies in different industries. ISS Performance Score is a numeric value between 0 and 100. See <https://www.issgovernance.com/esg/ratings/> for ISS definitions.

ISS Prime Indicator: A flag set by ISS for a company based on whether its ISS ESG Performance Score is at least 50. If a company meets the minimum threshold it is designated as Prime, and if not it is designated as Non-Prime. See <https://www.issgovernance.com/esg/ratings/> for ISS definitions.

Median Company: Median float-adjusted market capitalization of a company included in the index

Portfolio ISS ESG Performance Score: Portfolio ISS ESG Performance Score is computed by weighting securities' ISS ESG Performance Score by the corresponding weight in the index

Returns: Total index returns are used in computations, with 3-, 5- and 10-year returns annualized

Citing CRSP

Any dissemination (including by electronic means or in any other form) of the graphs or information herein shall include an attribution to CRSP as follows. "This data and information is based on data from the Center for Research in Security Prices, LLC (CRSP), ©YYYY." YYYY being the year the database was published.

Disclaimers

By accessing this report, you are indicating that you have read, and consent to be bound by these terms. The report is provided for informational, noncommercial purposes only, and may not be used as a basis for any financial instruments or products (including, without limitation, passively managed funds and index-linked derivative securities), or used to verify or correct data in any other compilation of data or index, or used to create any other data or index, without the prior written consent of CRSP®.

CRSP, its affiliates, its parent company, and its third party suppliers do not make any representations or guarantees regarding the accuracy of the data or information. Although the contents have been obtained from sources believed to be reliable, they are provided to your institution on an "as is" basis without warranties of any kind. With respect to this service and the contents, and to the fullest extent permitted by applicable law, CRSP, its affiliates, its parent company, and its third party suppliers hereby disclaim all express, implied and statutory warranties of any kind to the Subscriber or any third party, including, but not limited to, representations and warranties regarding accuracy, completeness, correctness, merchantability, or fitness for any particular purpose, or any representations or warranties arising from usage or custom or trade or by operation of law. CRSP, its affiliates, its parent company, and its third party suppliers, assume no responsibility for the consequences of any errors or omissions. In no event shall CRSP, its affiliates, its parent company, or its third party suppliers be liable to the Subscriber or to any third party for any loss or injury caused in whole or in part by contingencies beyond their control or negligence in procuring, compiling, or delivering any data or information. In no event shall CRSP, its affiliates, its parent company, or its third party suppliers be liable to the Subscriber or any third party for any claim arising out of or relating to CRSP-provided data or information, including, but not limited to, any decision made or action taken by your institution and any and all users affiliated with your institution based on the use of the data or information or for any types of damages (such as, but not limited to, direct, consequential, special, incidental, punitive or indirect damages), even if advised of the possibility of such damages.

All information is provided for informational purposes only. Every effort is made to ensure that all information given in this publication is accurate, but no responsibility or liability can be accepted by CRSP® nor its licensors for any errors or for any loss from use of this publication. Neither CRSP® nor any of its licensors make any claim, prediction, warranty or representation whatsoever, expressly or impliedly, either as to the results to be obtained from the use of the CRSP Indexes or the fitness or suitability of the Indexes for any particular purpose to which they might be put. The content is not an offer or recommendation to buy or sell, or a solicitation of an offer to buy or sell any security or instrument, or to participate in any particular trading strategy. Further, none of the content is intended to constitute investment advice or a recommendation to make (or refrain from making) any kind of investment decision and may not be relied on as such. The report is provided to you on an "as is" basis without warranties of any kind. CRSP® does not provide investment advice and nothing in this document should be taken as constituting financial or investment advice. CRSP® makes no representation regarding the advisability of investing in any asset. A decision to invest in any such asset should not be made in reliance on any information herein. Indexes cannot be invested in directly. Inclusion of an asset in an index is not a recommendation to buy, sell or hold that asset. The general information contained in this publication should not be acted upon without obtaining specific legal, tax, and investment advice from a licensed professional. No part of this information may be reproduced, stored in a retrieval system or transmitted in any form or by any means, electronic, mechanical, photocopying, recording or otherwise. Distribution of the CRSP® index values and the use of their indexes to create financial products require a license with CRSP® and/or its licensors.

CRSP uses various trademarks and trade names in the ordinary course of its business, including without limitation, CRSP's corporate name and logo. All other trademarks or trade names referred to in this paper are the property of their respective owners. Solely for convenience, the trademarks and trade names in this paper may be referred to without the ® and ™ symbols, but such references should not be construed as any indicator that their respective owners will not assert, to the fullest extent under applicable law, their rights thereto.

The Industry Classification Benchmark ("ICB") is owned by FTSE International Limited ("FTSE"). Neither CRSP® nor FTSE accept any liability to any person for any loss or damage arising out of any error or omission in the ICB. Past performance is no guarantee of future results. Charts and graphs are provided for illustrative purposes only. Index returns shown may not represent the results of the actual trading of investable assets. Certain returns shown may reflect back-tested performance. All performance presented prior to the index inception date is back-tested performance. Back-tested performance is not actual performance, but is hypothetical. The back-test calculations are based on the same methodology that was in effect when the index was officially launched. However, back-tested data may reflect the application of the index methodology with the benefit of hindsight, and the historic calculations of an index may change from month to month based on revisions to the underlying economic data used in the calculation of the index.

The Industry Classification Benchmark ("ICB") is a product of FTSE International Limited ("FTSE") and is licensed for use. FTSE is part of the London Stock Exchange Group plc and its applicable group undertakings (the "LSE Group"). The LSE Group includes (1) FTSE International Limited ("FTSE"), (2) Frank Russell Company ("Russell"), (3) FTSE Global Debt Capital Markets Inc. and FTSE Global Debt Capital Markets Limited (together, "FTSE Canada"), (4) MTSNext Limited ("MTSNext"), (5) Mergent, Inc. ("Mergent"), (6) FTSE Fixed Income LLC ("FTSE FI") and (7) The Yield Book Inc ("YB"). FTSE Russell® is a trading name of FTSE, Russell, FTSE Canada, MTSNext, Mergent, FTSE FI, YB. "FTSE®", "Russell®", "FTSE Russell®", "MTS®", "FTSE4Good®", "ICB®", "Mergent®", "The Yield Book®" and all other trademarks and service marks used herein (whether registered or unregistered) are trademarks and/or service marks owned or licensed by the applicable member of the LSE Group or their respective licensors and are owned, or used under license, by FTSE, Russell, MTSNext, FTSE Canada, Mergent, FTSE FI, YB. FTSE International Limited is authorized and regulated by the Financial Conduct Authority as a benchmark administrator.

The Uniform Entity Sectors classification system ("UES") is a product of Intercontinental Exchange, Inc ("ICE") and is licensed for use. Neither CRSP® nor ICE accept any liability to any person for any loss or damage arising out of any error or omission in the UES. Intercontinental Exchange, Inc ("ICE") is not an adviser for or a fiduciary to any account or fund managed by CRSP. Intercontinental Exchange, Inc ("ICE") is not responsible for any direct, indirect, or consequential damages associated with Index values.

ISS ESG Performance Score, ISS ESG Prime Indicator are the products of Institutional Shareholder Services Inc. (ISS) and is licensed for use. For more information please refer to the information at <https://www.issgovernance.com/>.